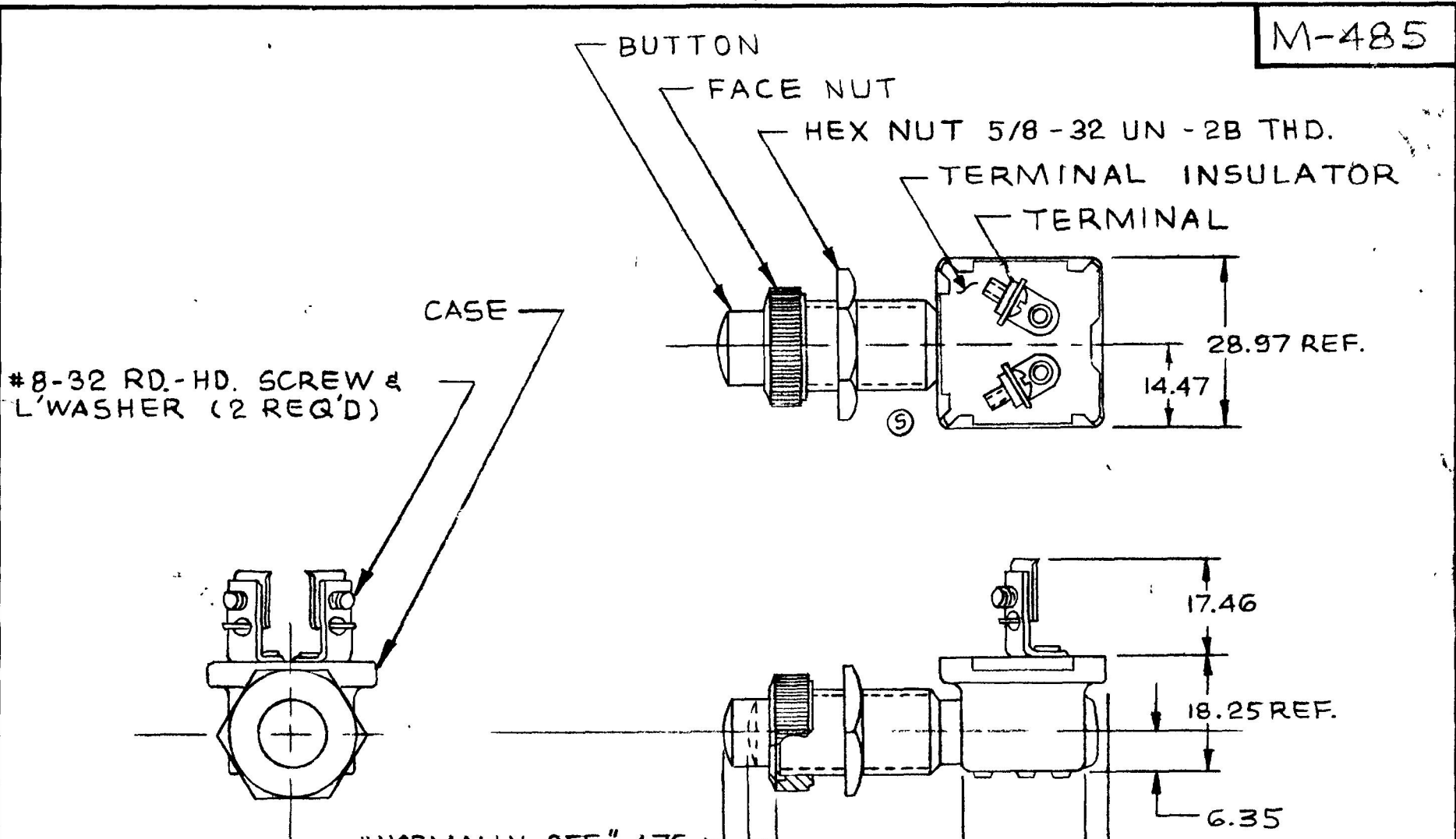


M-485

MM	IN
3.96	.156
4.76	.187
9.52	.375
14.47	.570
17.46	.687
18.25	.718
20.82	.820
21.08	.830
28.97	1.140
31.75	1.250
6.35	.250



#8-32 RD.-HD. SCREW & L'WASHER (2 REQ'D)

NOTES:

- 1. ALL METAL PARTS TO BE BRASS UNLESS OTHERWISE SPECIFIED
- 2. INSERTION PRESSURE 3 1/2 # TO 5 #

"NORMALLY OFF" 4.76

ON FOR REMAINDER OF TRAVEL

METRIC

3. ALL HARDWARE SHIPPED LOOSE

10 AMP5 @ 12 VDC

DO NOT SCALE

LET	WAS	DATE	BY	LET	WAS	DATE	BY	MATERIAL	DRAWN	CHECKED	APPRVL	SCALE	DATE DRAWN
								NOTED	JE			1:1	3-3-50
								FINISH					DATE BLUEPRINT
				T	ECN # 99193	5/13/99	RF	NOTED					
				S	ECN # 27164 ADDED CUTOUT	12-31-97	mp	TOLERANCES					
				R	REDRAWN	8/6/90	BL	DECIMAL ± .015 METRIC ± .010					
												SWITCH, MOMENTARY N.O.	M-485

CH Cole Hersee Co.
20 DOLLAR AVENUE SOUTH BOSTON, MA U.S.A. 02127

CH-188(4-78)