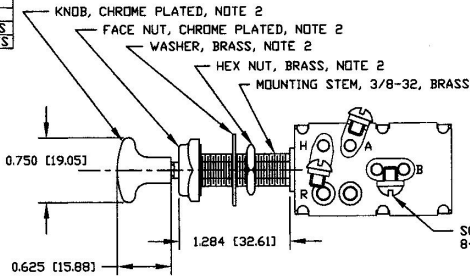
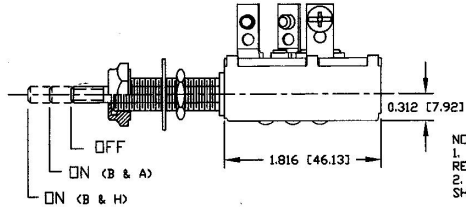
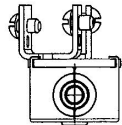


LEGEND	
B	BATTERY
A	ANCHOR LIGHTS
H	RUNNING LIGHTS



Revision Control Record			
Rev.	Description of Change	ECN No.	Date
D	NEW TERM INSUL SA CASE SA	00722	10/17/00
E	NOTE 2	00796	10/24/00
F	REMOVE LOCKWASHERS	01227	4/17/01

SCREW, BRASS  
8-32 (3 REQ'D), NOTE 2



NOTES:  
1. ALL DIMENSIONS ARE REFERENCE ONLY  
2. ALL HARDWARE AND KNOB SHIPPED LOOSE

**Tolerances** - Unless otherwise specifically noted, the following are default tolerances:  
 \* 2-place Decimal Dimensions  $\pm .02"$   
 \* 3-place Decimal Dimensions  $\pm .005"$   
 \* Angular Dimensions  $\pm 1.0$  Deg.  
 \* Metric: Refer to equivalent English Dimension Tolerance  
 >>> NOTE: All tolerances are Non-Cumulative. <<<

**Dimension Units** - All dimensions are expressed in inches except those shown in brackets (xxx) are expressed in millimeters

"NEE" or an Asterisk (\*) = Non-Tolerance Reference Dimension, shown for clarification purposes only.

**PROPRIETARY INFORMATION** - This Engineering Drawing, and the information contained herein, is proprietary to Cole Hersee Company and may not be disclosed, re-produced, or in any other way transferred or communicated to any other party without the express written consent of an authorized representative of Cole Hersee Company.

**DESIGN CONTROL** - It is the responsibility of the individual using / referencing this drawing to ensure that the noted design revision level agrees with the revision level of the Controlled Document (Master Drawing). This is a NON-CONTROLLED DOCUMENT unless otherwise specifically noted.

DO NOT SCALE - Dimensional variation may occur during printing / reproduction.

**Key for Special Characteristics:**

- Critical Characteristic, relating to Safety and/or Regulatory Compliance
- Significant Characteristic relating to Process Control (SPC)
- Control Dimension relating to Form - Fit - Function as defined by Cole Hersee Company and/or the Customer

(Note that the identification of any Characteristics as being "Special" does not alter the requirement that ALL specified dimensions & tolerances must be met.)

**Cole Hersee Co.**  
 20 Old Colony Ave., South Boston, MA, 02127  
 Ptn: 617-256-2100 Web: www.colehersee.com

<b>Description:</b> 3 POS LIGHT SWITCH	
<b>Drawing / Part No.:</b> M531	<b>Current Rev.:</b> F

Used On or Ref.:	Scale: 1:1	Drawn By: JWH	Date: 2/26/48	Responsible Engineer: JRV	Pg. 1 of 1
------------------	------------	---------------	---------------	---------------------------	------------