

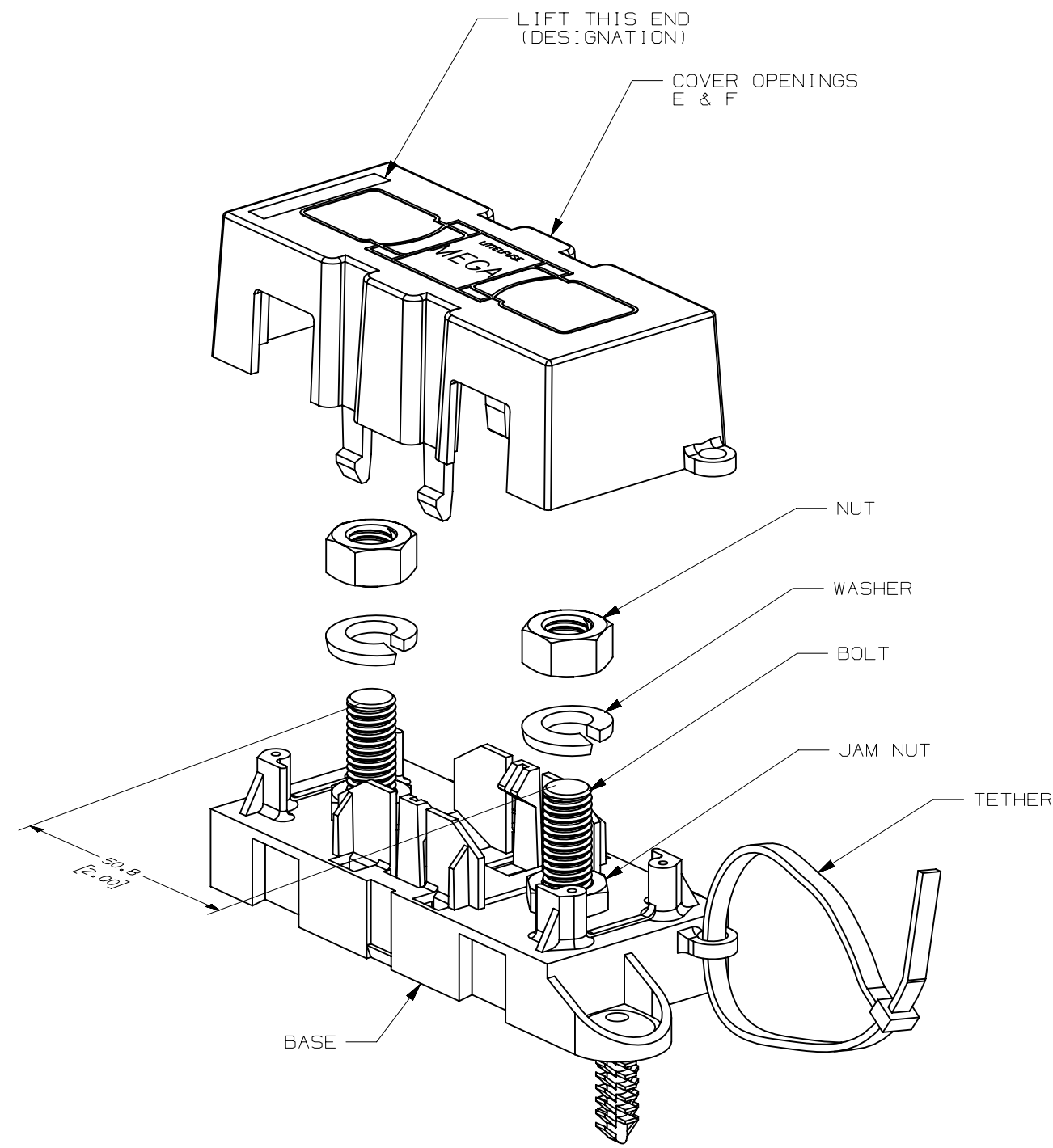
COVER OPENING POSITION

E F

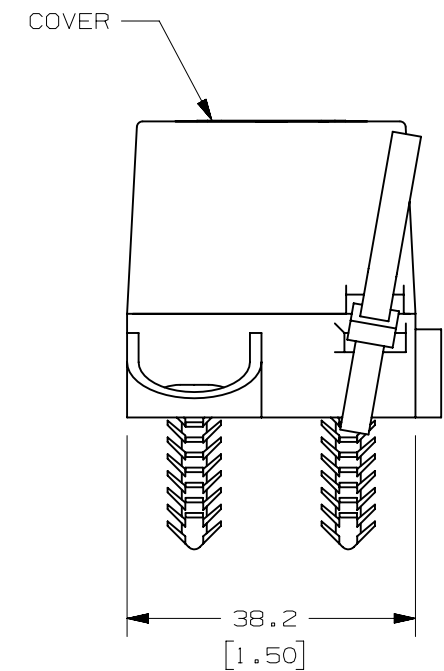
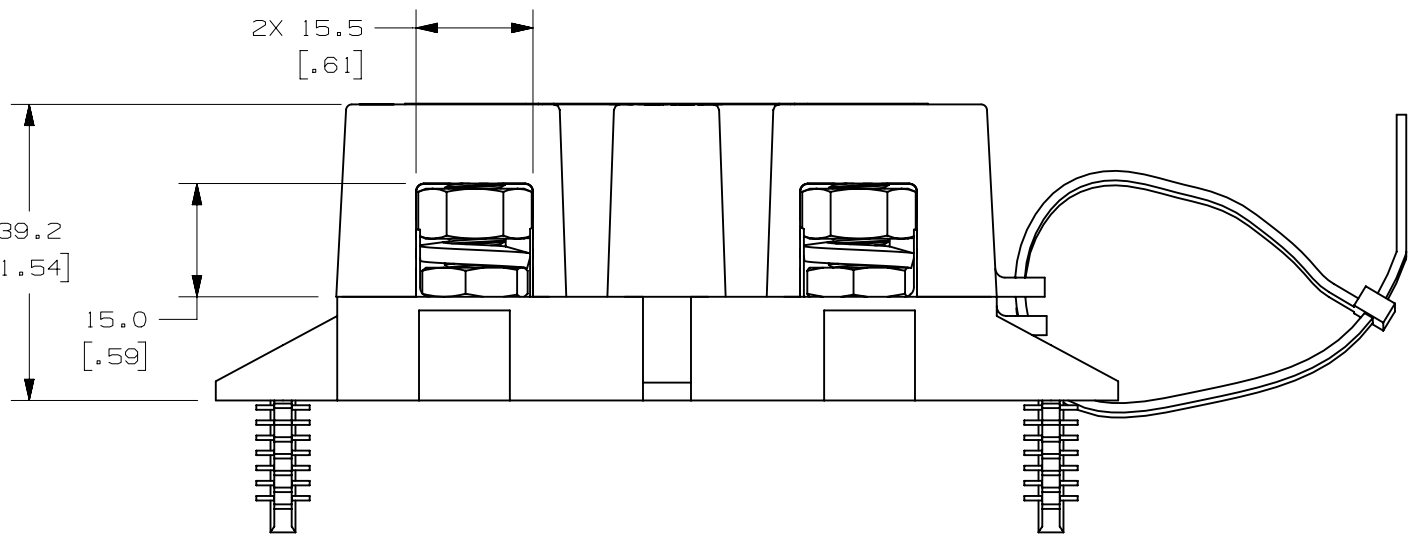
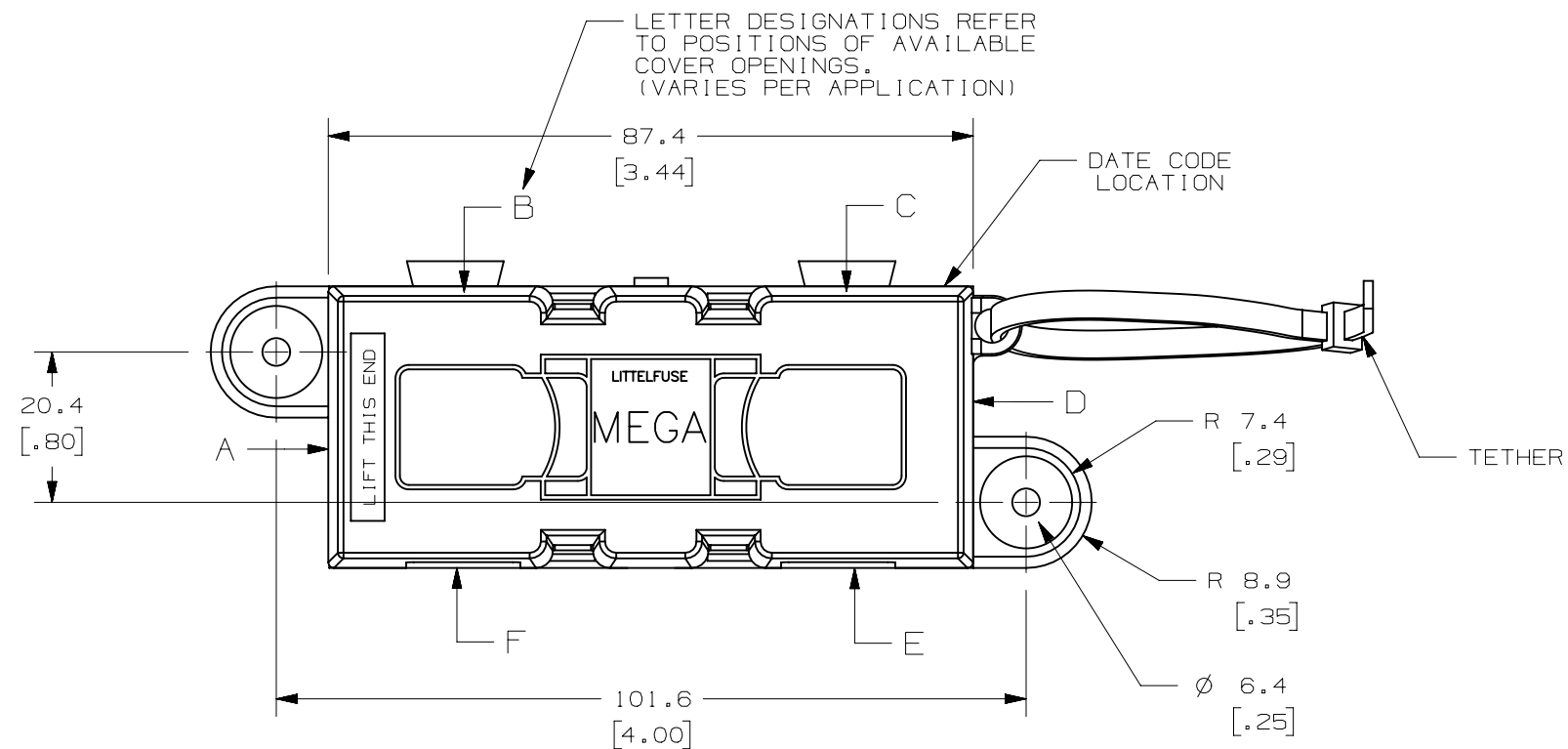
GENERAL NOTES:

- COVER RETENTION TEST: MINIMUM FORCE OF 2 LBS. REQUIRED TO REMOVE COVER WHEN IT IS SUSPENDED UPSIDE DOWN. FORCE SHALL BE APPLIED THROUGH THE INNER HOLES (2) IN BASE. USE FIXTURE #T-C403 TO SUPPORT PART.
- TORQUE REQUIREMENTS FOR THE HEX NUT USED TO SECURE THE CUSTOMER RING TERMINAL TO THE MEGA FUSE TO BE: 8mm NUT - 12-18 NEWTON METERS (106-159 IN-LBS)
- HOLDER MEETS L/F VALIDATION TEST SPEC. VS-005002.
- MATERIALS:
 - * BODY - GLASS FILLED THERMOPLASTIC
COLOR - BLACK
 - * COVER - THERMOPLASTIC
COLOR - BLACK
 - * WIRE TIE - THERMOPLASTIC
COLOR - BLACK
 - * STUDS & NUTS - M8 X 1.25 STEEL
ZINC PLATE WITH TRIVALENT CHROMATE, LEACHED AND SEALED. INTEGRAL TORQUE CONTROL LUBRICANT FINISH. (MEETS 96 HR. ASTM STD. B-117 SALT SPRAY REQ.)

| LTR | DATE | REVISION | CHK | APD |
|-----|-----------|------------------------------------|-----|-----|
| A | 10/20/10 | 501003ERA-RELEASE | OPL | |
| B | 12/27/10 | 501335ECA-REMOVE RATCHET FASTENER. | OPL | |
| C | 12/APR/19 | 520661ECA-REMOVE NOTE 5 | OPL | |
| | | | | |
| | | | | |
| | | | | |
| | | | | |
| | | | | |
| | | | | |
| | | | | |



GENERAL HOLDER & FUSE CONSTRUCTION (REF. ONLY)



| | | | |
|-------------------------------------------------------------------------------------------------------------------------------|-------------------------------------------------------------------------------------------------------------------------------------------------------------------------|-----------------------|-------------------------|
| UNLESS OTHERWISE SPECIFIED, DIMENSIONS ARE IN MILLIMETERS. DIMENSIONS IN BRACKETS [] ARE INCHES | | | |
| UNLESS OTHERWISE SPECIFIED, DIMENSIONS DO NOT INCLUDE PLATING. | | | |
| ⊙ | DENOTES CRITICAL CHARACTERISTICS. | | |
| CPK | DENOTES CPK DIMENSIONS, -MINIMUM CPK VALUE | | |
| ST | DENOTES A CHARACTERISTIC THAT PROVIDES AN INDICATION OF PROCESS PERFORMANCE. PROCEDURE FOR MEASUREMENT AND TRACKING TO BE DEFINED IN LITTELFUSE INSPECTION INSTRUCTIONS | | |
| CP | DENOTES CP DIMENSIONS, -MINIMUM CP VALUE MUST BE WITHIN THE DIMENSIONAL LIMITATIONS SHOWN ON DRAWING AND INITIALLY LOCATED TO ALLOW FOR MAXIMUM TOOL LIFE | | |
| COPIES TO | MATL SPEC | | |
| 1 9 18 | FINISH | | |
| 2 10 19 | DRW | OPL | DATE 10/20/10 SCALE 1:1 |
| 3 12 20 | CHK | DATE | SUPER DR |
| 4 13 21 | APPD | DATE | FINSH GOOD WT |
| 5 14 23 | | | GRAMS/PIECE |
| 6 15 33 | | | |
| 7 16 43 | | | |
| 8 17 53 | | | |
| TOLERANCE UNLESS OTHERWISE SPECIFIED ONE PLACE DEC +/- .3 THREE PLACE DEC +/- .100 TWO PLACE DEC +/- .25 ANGULAR +/- 1° | | | |
| 3RD ANGLE PROJECTION | TITLE MEGAFUSE HOLDER | | |
| Littelfuse | REVISION C | DRWG. NO. 02981034ZXT | OUTLINE |
| DES PLAINES, ILLINOIS 60016 | | | |

METRIC

CAD GENERATED DRAWING - NO PENCIL CHANGES ALLOWED