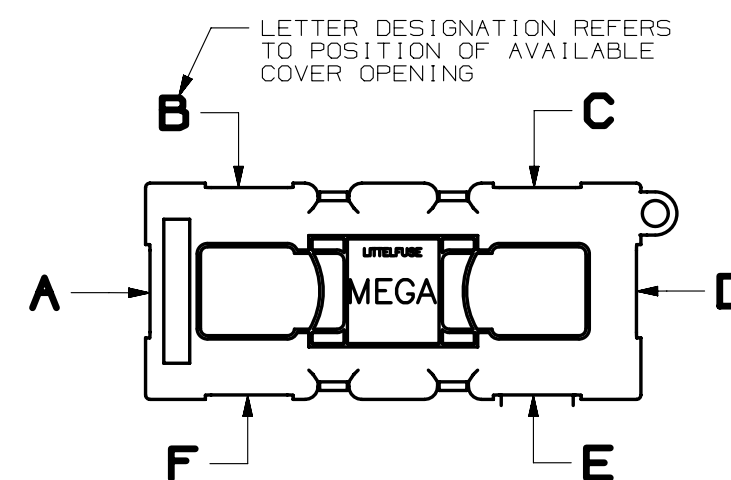
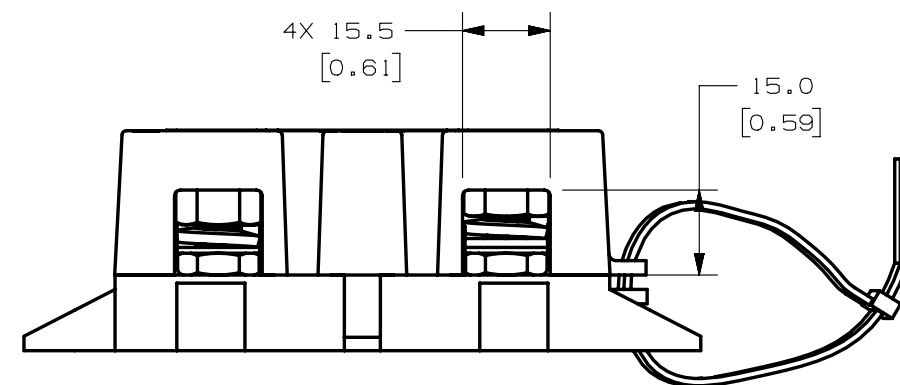
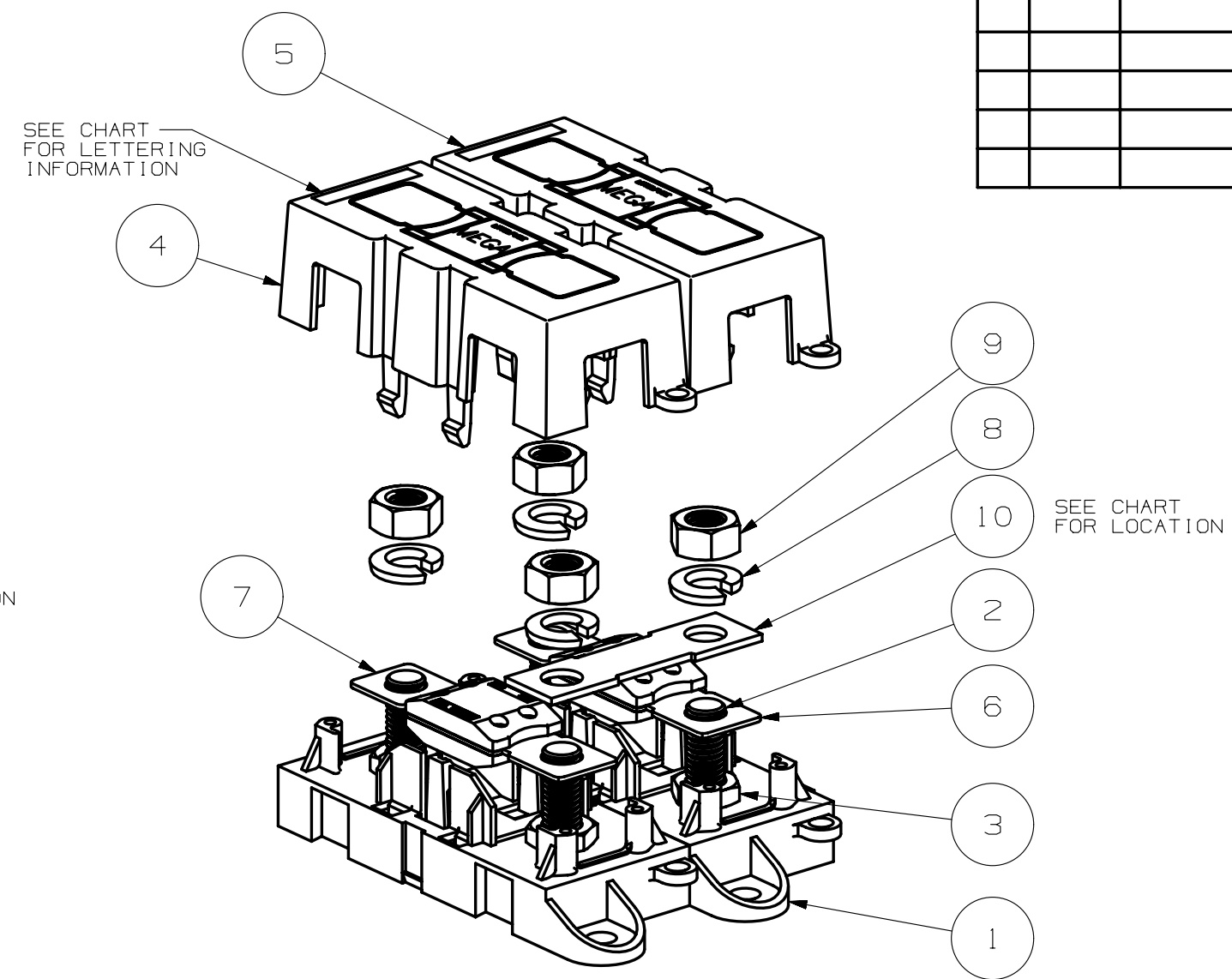
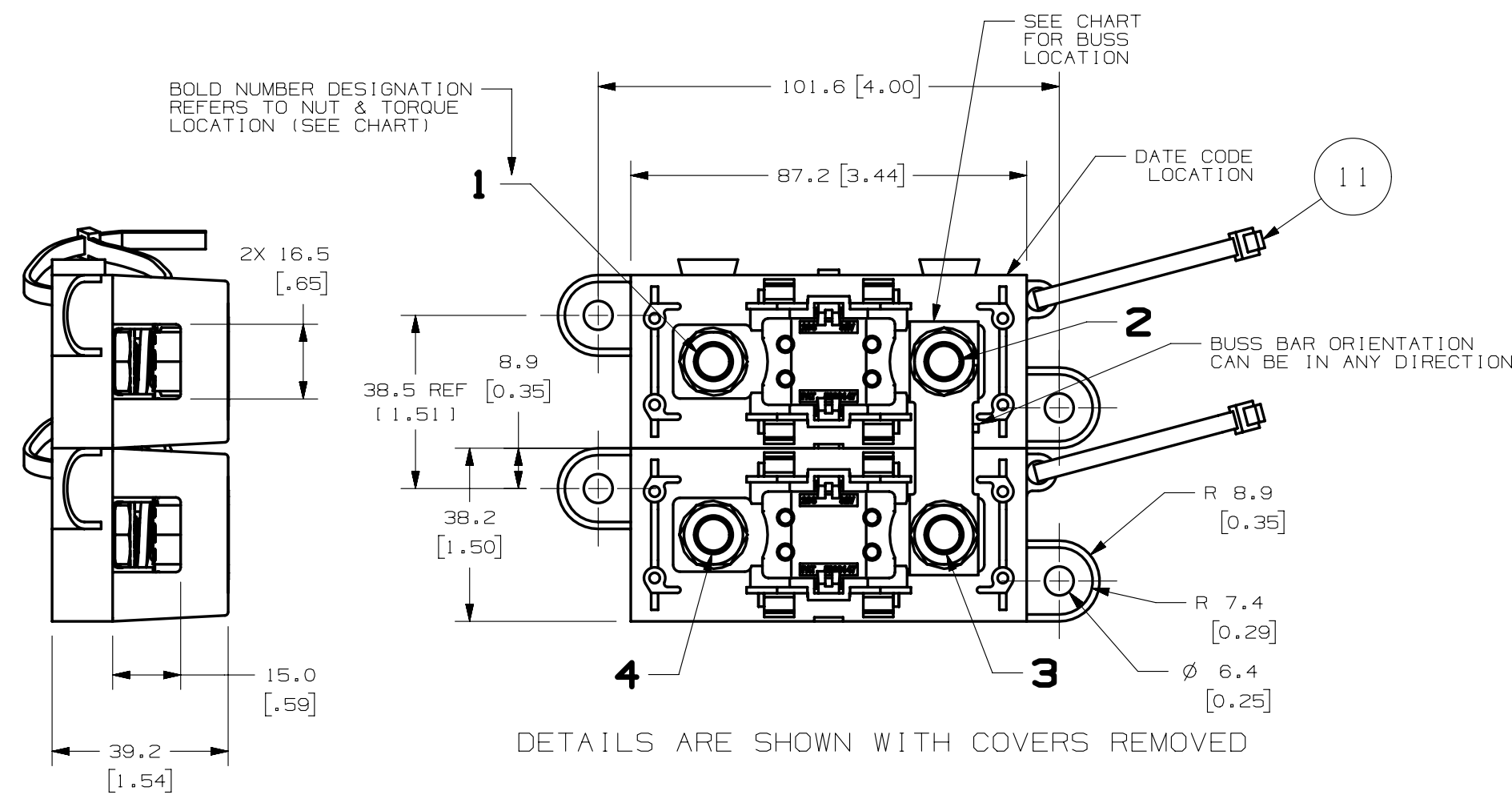


| PART NUMBER | BASE ① | BOLT ② | JAM NUT③ | COVER OPENING ④ | COVER OPENING ⑤ | FUSE ⑥ | FUSE ⑦ | WASHER⑧ | NUT LOCATION ⑨ | BUSS BAR LOCATED BETWEEN BOLT #'S ⑩ | TETHER ⑪ |
|-------------|--------|--------|----------|-----------------|-----------------|--------------|--------------|---------|----------------|-------------------------------------|----------|
| 02982001ZXT | YES | YES | YES | A B C D E F | A B C D E F | 0298150.ZXEH | 0298150.ZXEH | YES | 2 3 4 | 2 - 3 | YES |
| 02982002ZXT | YES | YES | YES | A C F | A B C E | 0298175.ZXEH | 0298175.ZXEH | NONE | 3 | 2 - 3 | YES |
| 02982003ZXT | YES | YES | YES | D E F | A D | 0298100.ZXEH | 0298175.ZXEH | NONE | 1 | NONE | YES |
| 02982004ZXT | YES | YES | YES | A B | B C F | 0298175.ZXEH | NONE | NONE | 1 | 1 - 4 | YES |

| LTR | DATE | REVISION | CHK | APD |
|-----|----------|--|-----|-----|
| A | 09/11/13 | 509475GCA-RELEASED OPL | | |
| B | 02/17/14 | 510127ECA-REPLACE NOTE FROM: FOR BUSBAR 8B2-786 ORIENTATION TAB MUST BE BY BOLT No 2 TO: | | |
| - | - | BUSS BAR ORIENTATION CAN BE IN ANY DIRECTION OPL | | |
| C | 06/19/14 | 510654ECA-CHANGE DIMENSION FROM 38.2 TO 38.5 ADD REF OPL | | |



DETAIL OF OPENINGS ON COVER (SEE CHART)

GENERAL NOTES:

- COVER RETENTION TEST: MINIMUM FORCE OF 2 LBS. IS REQUIRED TO REMOVE COVER WHEN IT IS SUSPENDED UPSIDE DOWN. FORCE SHALL BE APPLIED THROUGH THE INNER HOLES (2) IN BASE. USE FIXTURE #T-C403 TO SUPPORT PART.
- TORQUE APPLIED TO NUT
TORQUE REQUIREMENTS FOR THE HEX NUT USED TO SECURE THE BUSSBAR OR THE CUSTOMER RING TERMINAL TO THE MEGA FUSE TO BE:
8mm NUT - 12-18 NEWTON METERS (106-159 IN-LBS)
- DUAL HOLDER MEETS L/F VALIDATION TEST SPEC. VS-005005.

4. MATERIALS:

- * BODY - GLASS FILLED THERMOPLASTIC
COLOR - BLACK
- * COVER - THERMOPLASTIC
COLOR - BLACK
- * WIRE TIE - THERMOPLASTIC
COLOR - BLACK
- * STUDS & NUTS - M8 X 1.25 STEEL
ZINC PLATE WITH TRIVALENT CHROMATE, LEACHED AND SEALED,
INTEGRAL TORQUE CONTROL LUBRICANT FINISH
(MEETS 96 HR. ASTM STD. B-117 SALT SPRAY REQ.)
- * PREVAILING TORQUE ELEMENT - NYLON, COLOR OPTIONAL

| NO | COMPONENT NO | DESCRIPTION | QTY/M | U/M |
|----|--------------|-------------|-------|-----|
| - | | | | |
| - | | | | |
| - | | | | |

BILL OF MATERIAL

UNLESS OTHERWISE SPECIFIED, DIMENSIONS ARE IN MILLIMETERS.
DIMENSIONS IN BRACKETS [] ARE INCHES

UNLESS OTHERWISE SPECIFIED, DIMENSIONS DO NOT INCLUDE PLATING.

| | |
|-----|---|
| Ⓞ | DENOTES CRITICAL CHARACTERISTICS. |
| CPK | DENOTES CPK DIMENSIONS, -MINIMUM CPK VALUE |
| ST | DENOTES A CHARACTERISTIC THAT PROVIDES AN INDICATION OF PROCESS PERFORMANCE. PROCEDURE FOR MEASUREMENT AND TRACKING TO BE DEFINED IN LITTELFUSE INSPECTION INSTRUCTIONS |
| CP | DENOTES CP DIMENSIONS, -MINIMUM CP VALUE MUST BE WITHIN THE DIMENSIONAL LIMITATIONS SHOWN ON DRAWING AND INITIALLY LOCATED TO ALLOW FOR MAXIMUM TOOL LIFE |

| COPIES TO | MATL SPEC |
|-----------|------------------------------------|
| 1 9 18 | |
| 2 10 19 | FINISH |
| 3 12 20 | |
| 4 13 21 | DRW OPL DATE 09/11/13 SCALE 1:0.75 |
| 5 14 23 | CHK DATE SUPER DR |
| 6 15 33 | |
| 7 16 43 | APPD DATE FINSH GOOD WT |
| 8 17 53 | GRAMS/PIECE |

| TOLERANCE UNLESS OTHERWISE SPECIFIED | |
|--------------------------------------|--------------------------|
| ONE PLACE DEC +/- .3 | THREE PLACE DEC +/- .100 |
| TWO PLACE DEC +/- .25 | ANGULAR +/- 1° |

| 3RD ANGLE PROJECTION | TITLE |
|----------------------|----------------------|
| | DUAL MEGAFUSE HOLDER |

| REVISION | DRWG. NO. | OUTLINE |
|----------|-------------|---------|
| C | 02982000ZXT | |

METRIC

Littelfuse
DES PLAINES, ILLINOIS 60016

CAD GENERATED DRAWING - NO PENCIL CHANGES ALLOWED