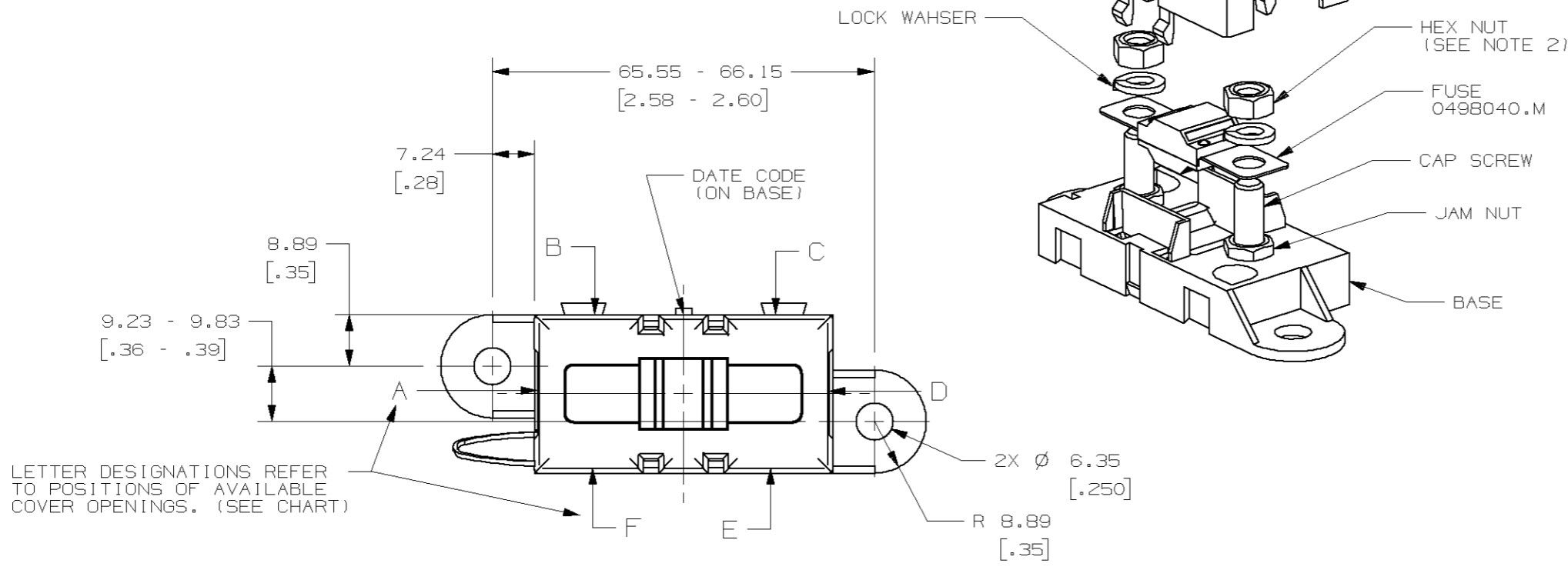
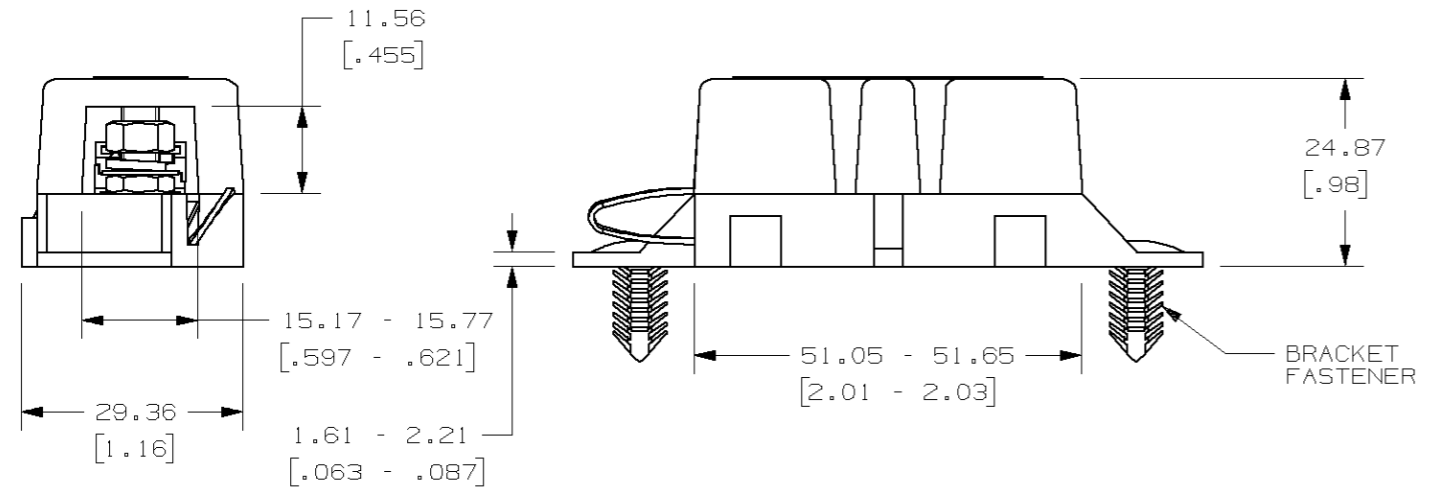


PART NUMBER	COVER OPENINGS
04980914ZXT	A D



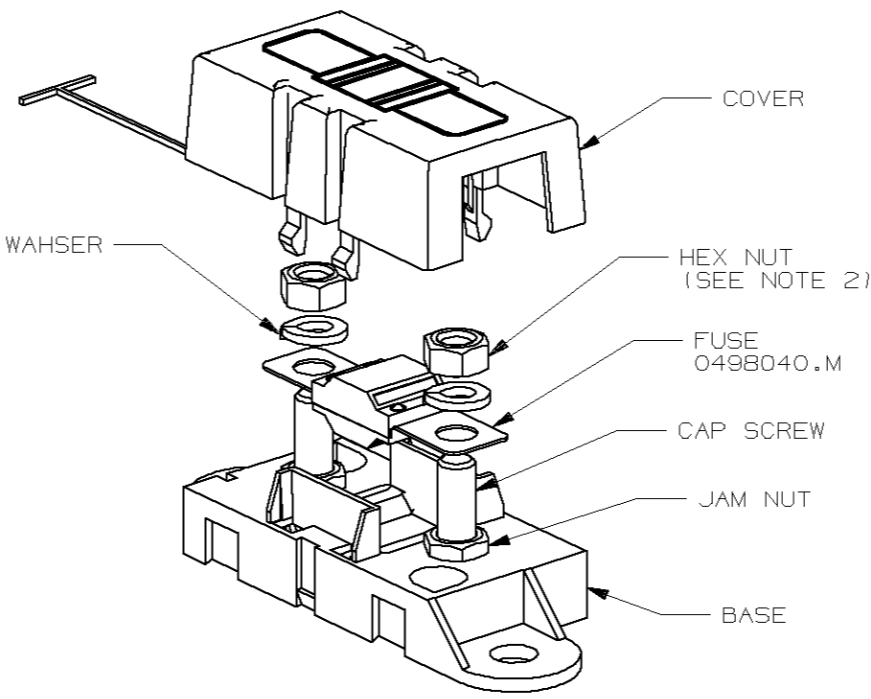
LETTER DESIGNATIONS REFER TO POSITIONS OF AVAILABLE COVER OPENINGS. (SEE CHART)



NOTES:

- TAB OF COVER TIE IS INSERTED INTO HOLE IN BASE.
- TORQUE REQUIRED FOR HEX NUT TO BE 4.0 - 5.0 NEWTON METERS (35-44 IN-LBS).
- CAP SCREW AND NUTS - M5 X 0.8 - ANS WASHERS, STEEL, ZINC PLATE WITH TRIVALENT CHROMATE, LEACHED AND SEALED, INTEGRAL TORQUE CONTROL LUBRICANT FINISH. (MEETS 96 HR. ASTM STD. B-117 SALT SPRAY REQ.).
- HOLDER MEETS L/F VALIDATION TEST SPEC. VS-005004.

METRIC



NO	COMPONENT NO	DESCRIPTION	QTY/M	U/M
BILL OF MATERIAL				
COPIES TO		MATL SPEC		
1	9	18	FINISH	
2	10	19	SCALE 1:1	
3	12	20	DATE 05/25/05	SUPER DR
4	13	21	DATE	FINISH GOOD WT GRAMS/PIECE
5	14	23	DATE	TOLERANCE UNLESS OTHERWISE SPECIFIED
6	15	33	DATE	ONE PLACE DEC +/- .25
7	16	43	DATE	THREE PLACE DEC +/- .100
8	17	53	DATE	ANGULAR +/- 1°
LTR		DATE	REVISION	CHK
A	05/25/05	61735 - RELEASE	DJG	
B	06/08/07	854600-REDRAWN IN US & CONVERT TO METRIC, ADDED TOLERANCE TO DIMENSIONS, 7.24 WAS (0.19) GMB		
TITLE		MIDI FUSE HOLDER		
PROJECTION		W/40A FUSE INSTALLED		
3RD ANGLE		REVISION DRWG. NO. 04980914ZXT		
OUTLINE		04980914ZXT		

UNLESS OTHERWISE SPECIFIED, DIMENSIONS ARE IN MILLIMETERS. DIMENSIONS IN BRACKETS [ ] ARE INCHES

UNLESS OTHERWISE SPECIFIED, DIMENSIONS DO NOT INCLUDE PLATING.

⊙ DENOTES CRITICAL CHARACTERISTICS.

CPK DENOTES CPK DIMENSIONS, -MINIMUM CPK VALUE

ST DENOTES A CHARACTERISTIC THAT PROVIDES AN INDICATION OF PROCESS PERFORMANCE. PROCEDURE FOR MEASUREMENT AND TRACKING TO BE DEFINED IN LITTELFUSE INSPECTION INSTRUCTIONS

CP DENOTES CP DIMENSIONS, -MINIMUM CP VALUE MUST BE WITHIN THE DIMENSIONAL LIMITATIONS SHOWN ON DRAWING AND INITIALLY LOCATED TO ALLOW FOR MAXIMUM TOOL LIFE