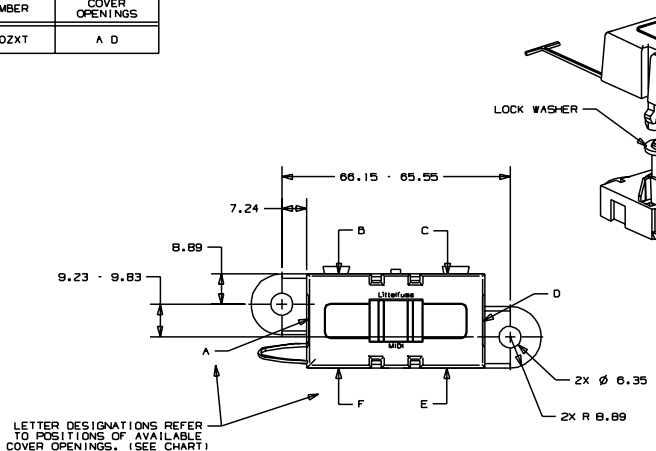
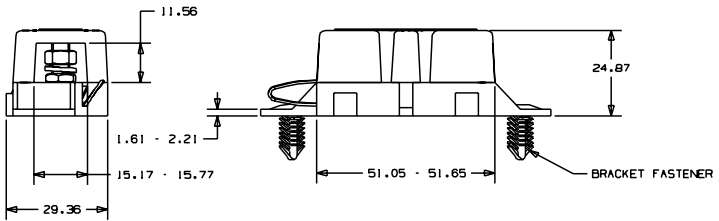


CAD GENERATED DRAWING - NO PENCIL CHANGES ALLOWED

PART NUMBER	COVER OPENINGS
O49B0920ZXT	A D

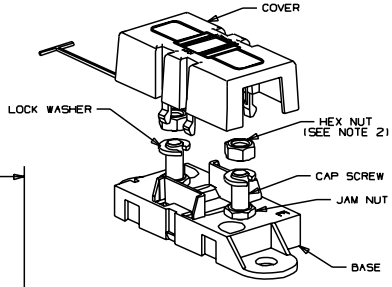


LETTER DESIGNATIONS REFER TO POSITIONS OF AVAILABLE COVER OPENINGS. (SEE CHART)



- NOTES:
- TAB COVER TIE IS INSERTED INTO HOLE IN BASE.
  - TORQUE REQUIRED FOR HEX NUT TO BE 4.0 - 5.0 NEWTON METERS (35-44 IN-LBS).

METRIC ASSEMBLY



NO	COMPONENT NO	DESCRIPTION	QTY/M	L/M
		BILL OF MATERIAL		
		MATL SPEC		
		COPIES TO		
		1 9 18 FINISH		
		2 10 19		
		3 12 20		
		4 13 21 DRW GMB DATE 01/12/10 SCALE 1:1		
		5 14 22		
		6 15 23 CHK DATE		
		7 16 43 INPDD DATE FINISH GOOD WIT		
		8 17 53		
		TOLERANCES UNLESS OTHERWISE SPECIFIED (REF. ISO 2768-mS)		
		DIMENSION 0.5 - 3 <sup>+0.1</sup> / <sub>-0.1</sub> 3 - 6 <sup>+0.2</sup> / <sub>-0.2</sub> 6 - 30 <sup>+0.3</sup> / <sub>-0.3</sub> 30 - 120 <sup>+0.5</sup> / <sub>-0.5</sub> 120 - 400		
		TITLE HOLDER - M101		
		REVISION		
		A 01/12/10 S473-RELEASE GMB		
		CHK APD		
		OUTLINE		
		REVISED DRAWS. NO.		
		A		
		OL - O49B0920ZXT		

UNLESS OTHERWISE SPECIFIED, DIMENSIONS ARE IN MILLIMETERS. DIMENSIONS IN BRACKETS [ ] ARE IN INCHES.

CPK DENOTES CRITICAL CHARACTERISTICS.

CP DENOTES CP DIMENSIONS. - MINIMUM CP VALUE

CPK DENOTES CP DIMENSIONS. - MINIMUM CP VALUE

CP DENOTES CP DIMENSIONS. - MINIMUM CP VALUE

CPK DENOTES CP DIMENSIONS. - MINIMUM CP VALUE

CP DENOTES CP DIMENSIONS. - MINIMUM CP VALUE

CPK DENOTES CP DIMENSIONS. - MINIMUM CP VALUE

CP DENOTES CP DIMENSIONS. - MINIMUM CP VALUE

