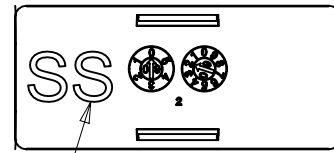
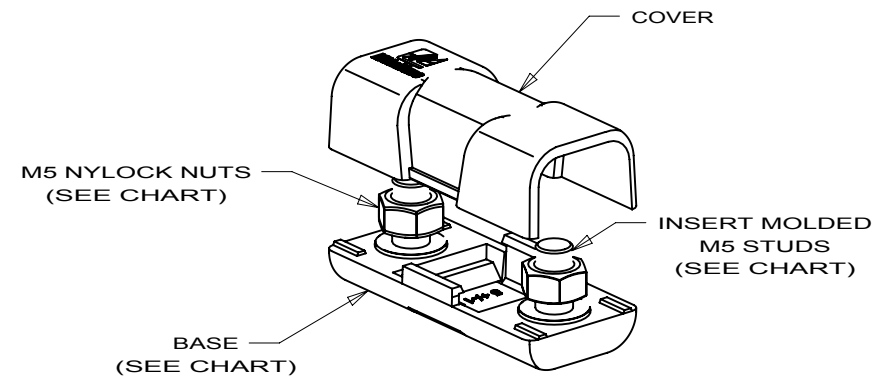
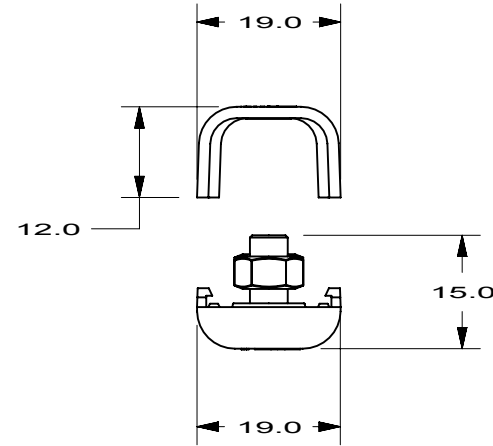
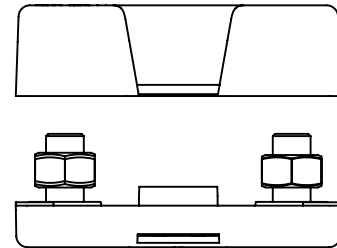
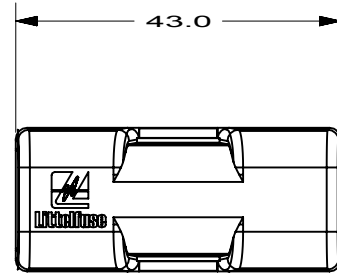
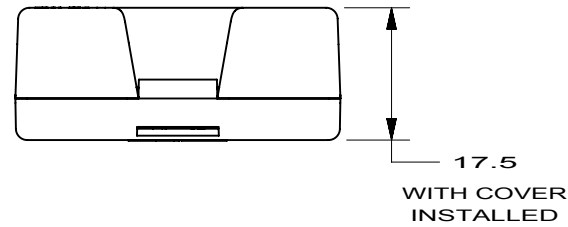


PART NUMBER	COMPONENTS			MARKING ON BASE
	COVER PART #	BASE PART #	HARDWARE	
04980921GXM5	498921-1	498921-2	ZINC-PLATED NYLOCK NUT	NONE
04980921GXM5-SS	498921-1	498921-3	STAINLESS-STEEL NYLOCK NUT	SS



MARKING
(SEE CHART)



- NOTES:
- MATERIAL:
BASE/COVER: UL94V-0 GLASS FILLED NYLON
STUDS: SEE CHART
NUTS: SEE CHART WITH NYLOK INSERTS
 - TORQUE RATING: 5 ± 1 Nm
 - FUSE RATING: 30-200A
 - WIRE SIZE: 14-4 AWG (2.5mm^2 - 20mm^2)
 - TEMPERATURE RATING: -40°C TO 125°C
 - PARTS ARE SHIPPED BULK WITH NUTS
FINGER TIGHTENED AND COVER UNINSTALLED.

METRIC
ASSEMBLY

UNLESS OTHERWISE SPECIFIED, DIMENSIONS ARE IN MILLIMETERS.
DIMENSIONS IN BRACKETS [] ARE INCHES

UNLESS OTHERWISE SPECIFIED, DIMENSIONS DO NOT INCLUDE PLATING.

CPK	DENOTES CRITICAL CHARACTERISTICS.
ST	DENOTES CPK DIMENSIONS, -MINIMUM CPK VALUE
CP	DENOTES A CHARACTERISTIC THAT PROVIDES AN INDICATION OF PROCESS PERFORMANCE. PROCEDURE FOR MEASUREMENT AND TRACKING TO BE DEFINED IN LITTELFUSE INSPECTION INSTRUCTIONS
	DENOTES CP DIMENSIONS, -MINIMUM CP VALUE MUST BE WITHIN THE DIMENSIONAL LIMITATIONS SHOWN ON DRAWING AND INITIALLY LOCATED TO ALLOW FOR MAXIMUM TOOL LIFE

COPIES TO		LTR		DATE		REVISION		CHK	APD
1	9	A	05/20/10	SA289-RELEASE	GMB				
2	10	B	09/28/10	500860ERA-RELEASE					
3	12	C	06/14/12	04980921GXM5-SS	GMB				
4	13			503912ECA-OBSOLETE					
5	14			04980921GXM5-SS	FYUE				
6	15								
7	16								
8	17								
9	18								
10	19								
11	20								
12	21								
13	22								
14	23								
15	24								
16	25								
17	26								
18	27								
19	28								
20	29								
21	30								
22	31								
23	32								
24	33								
25	34								
26	35								
27	36								
28	37								
29	38								
30	39								
31	40								
32	41								
33	42								
34	43								
35	44								
36	45								
37	46								
38	47								
39	48								
40	49								
41	50								
42	51								
43	52								
44	53								
45	54								
46	55								
47	56								
48	57								
49	58								
50	59								
51	60								
52	61								
53	62								
54	63								
55	64								
56	65								
57	66								
58	67								
59	68								
60	69								
61	70								
62	71								
63	72								
64	73								
65	74								
66	75								
67	76								
68	77								
69	78								
70	79								
71	80								
72	81								
73	82								
74	83								
75	84								
76	85								
77	86								
78	87								
79	88								
80	89								
81	90								
82	91								
83	92								
84	93								
85	94								
86	95								
87	96								
88	97								
89	98								
90	99								
91	100								

BILL OF MATERIAL

MATERIAL SPEC		FINISH		SCALE		1:1	
DRW	GMB	DATE	05/20/10	SCALE	1:1	DATE	
CHK		DATE		SUPER DR		DATE	
APPD		DATE		FINISH GOOD WT		DATE	
TOLERANCES UNLESS OTHERWISE SPECIFIED (REF. ISO 2768-mK)							
DIMENSION	0.5 - 3	3 - 6	6 - 30	30 - 120	120 - 400	UP TO OVER	UP TO OVER
TOLERANCE	± 0.1	± 0.1	± 0.2	± 0.3	± 0.5		
3RD ANGLE PROJECTION							
TITLE HOLDER MIDI, M5 NUT W/INSERT & COVER							
REVISION DRWG. NO. C OL-04980921GXM5							
LITTELFUSE DES PLAINES, ILLINOIS 60016							