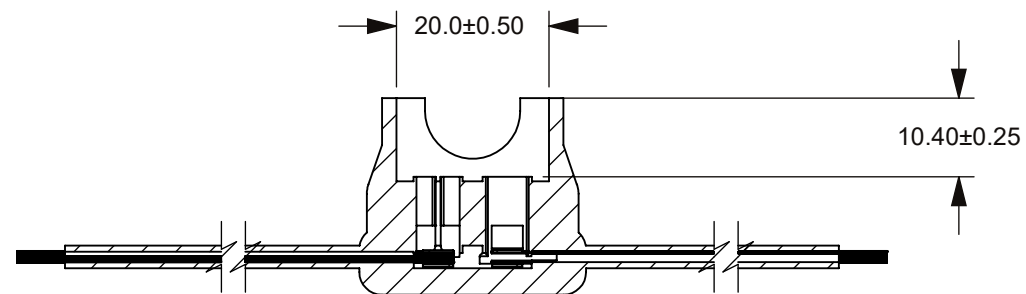
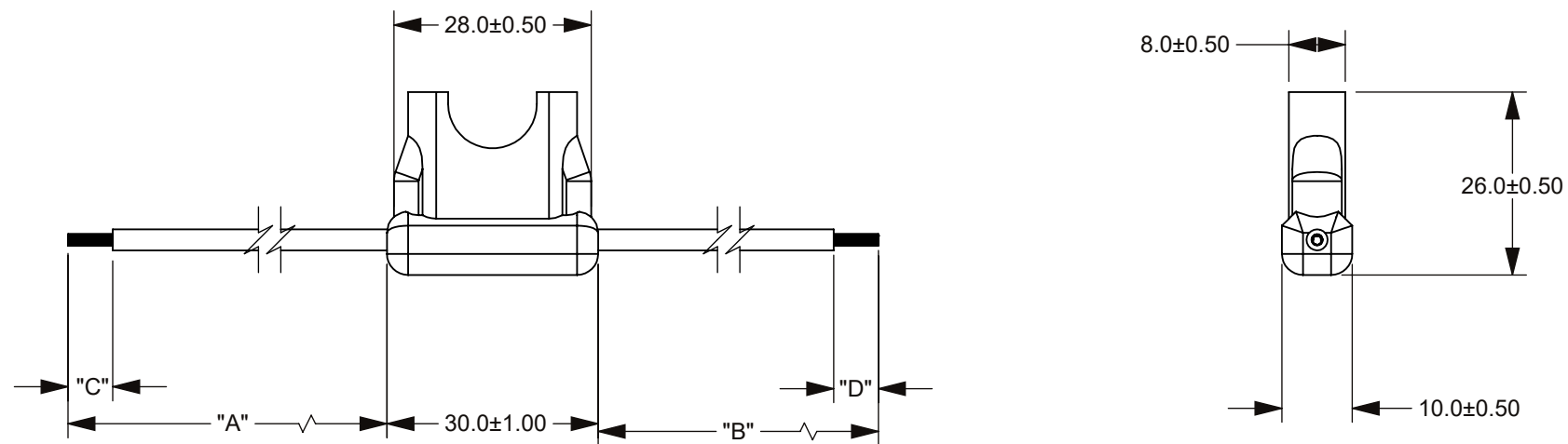
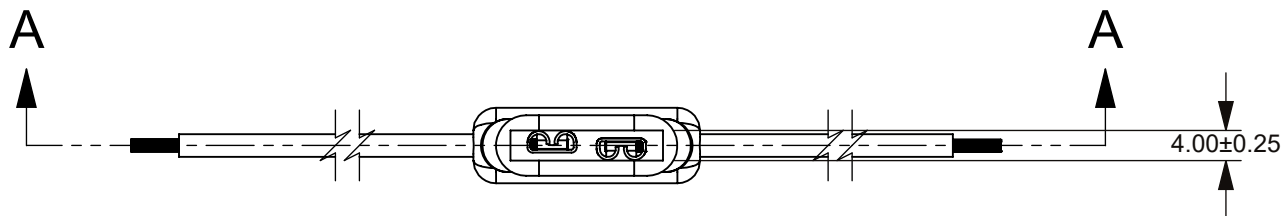


THIS DRAWING AND THE INFORMATION CONTAINED WITHIN IT ARE CONFIDENTIAL AND MAY NOT BE COPIED OR DISCLOSED WITHOUT THE WRITTEN PERMISSION OF LITTELFUSE.

PART NUMBER	"A"	"B"	"C"	"D"	WIRE TYPE
0FHA0001ZXJ-GRN	101.6±5	101.6±5	6.35±2	6.35±2	16 AWG GPT WIRE

REVISIONS				
ZONE	REV.	DESCRIPTION	DATE	APPROVED
	A	PCO #5300031. INITIAL RELEASE. DSILVA	3/7/2022	S.CASTILLO



SECTION A-A

- NOTES:
- MATERIAL:
 - HOLDER: PVC, COLOR BLACK.
 - CONTACTS: COPPER ALLOY, TIN PLATED.
 - RATING: MAX 20A, 32 VDC

NO.	COMPONENT NO.	COMPONENT NAME	QTY	U	
TOLERANCES UNLESS OTHERWISE SPECIFIED (REF ISO 2768-FH)					
.5 to 3	>3 to 6	>6 to 30	>30 to 120	>120 to 400	ANGLE
±0.05	±0.05	±0.10	±0.15	±0.2	NONE

DIMENSIONS ARE SHOWN IN MILLIMETERS. DIMENSIONS AND TOLERANCES ARE DEFINED ACCORDING TO ANSI/ASME Y14.5-1994.

PER CHI-NP020-0008 PROCEDURE	SYMBOL	DESCRIPTION
●		FIT/ FUNCTION CRITICAL CHARACTERISTICS
<S>		SAFETY/ COMPLIANCE CRITICAL CHARACTERISTICS SYMBOL
CPK		DENOTES CPK DIMENSIONS MINIMUM CPK VALUE
ST		DENOTES A CHARACTERISTIC THAT PROVIDES AN INDICATION OF PROCESS PERFORMANCE. PROCEDURE FOR MEASUREMENT AND TRACKING TO BE DEFINED IN LITTELFUSE INSPECTION INSTRUCTIONS
CP		DENOTES CP DIMENSIONS. -MINIMUM CP VALUE MUST BE WITHIN THE DIMENSIONAL LIMITATIONS SHOWN ON DRAWING AND INITIALLY LOCATED TO ALLOW FOR MAXIMUM TOOL LIFE

	NAME	DATE
DRAWN	DSILVA	2/28/2022
CHECKED	S.CASTILLO	3/7/2022



Expertise Applied | Answers Delivered

FORM NO: CVP-PE40-0003 REV B		TITLE	
THIRD ANGLE PROJECTION		AUTOFUSE HOLDER IN-LINE	
DO NOT SCALE DRAWING	SCALE 1:1	SIZE B	DWG. NO. OUTLINE OL-0FHA0001ZXJ-GRN
		REV. A	SHEET 1 OF 1