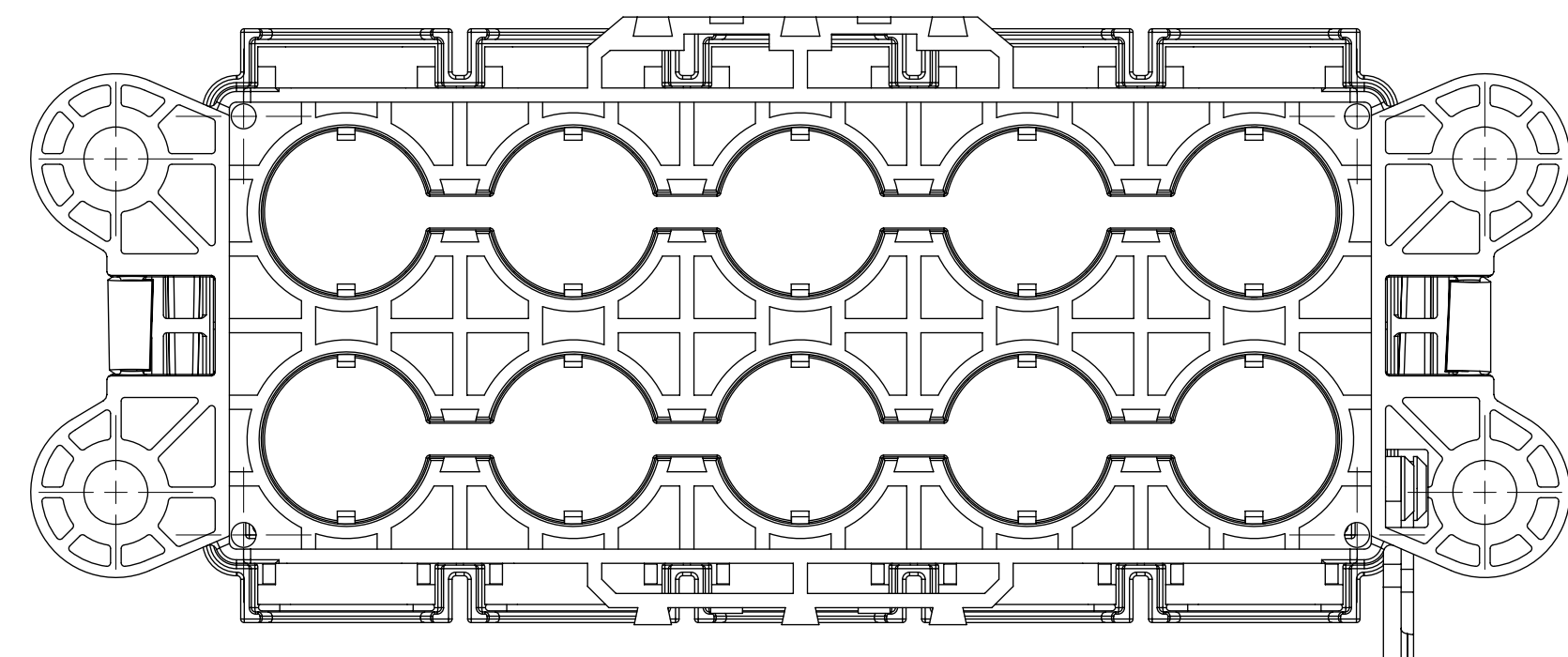
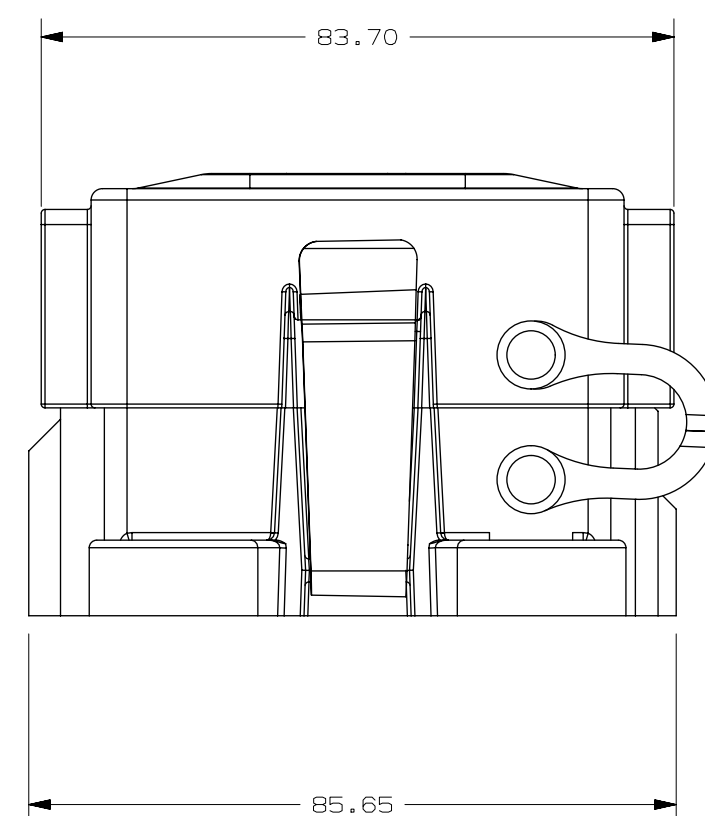
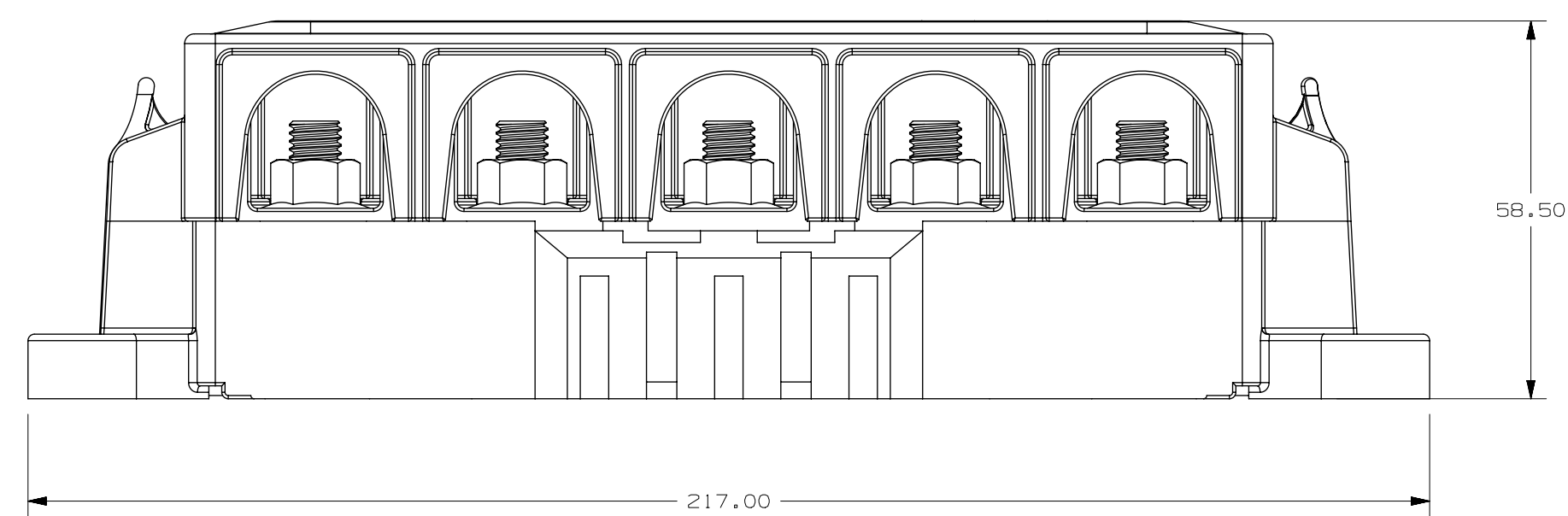
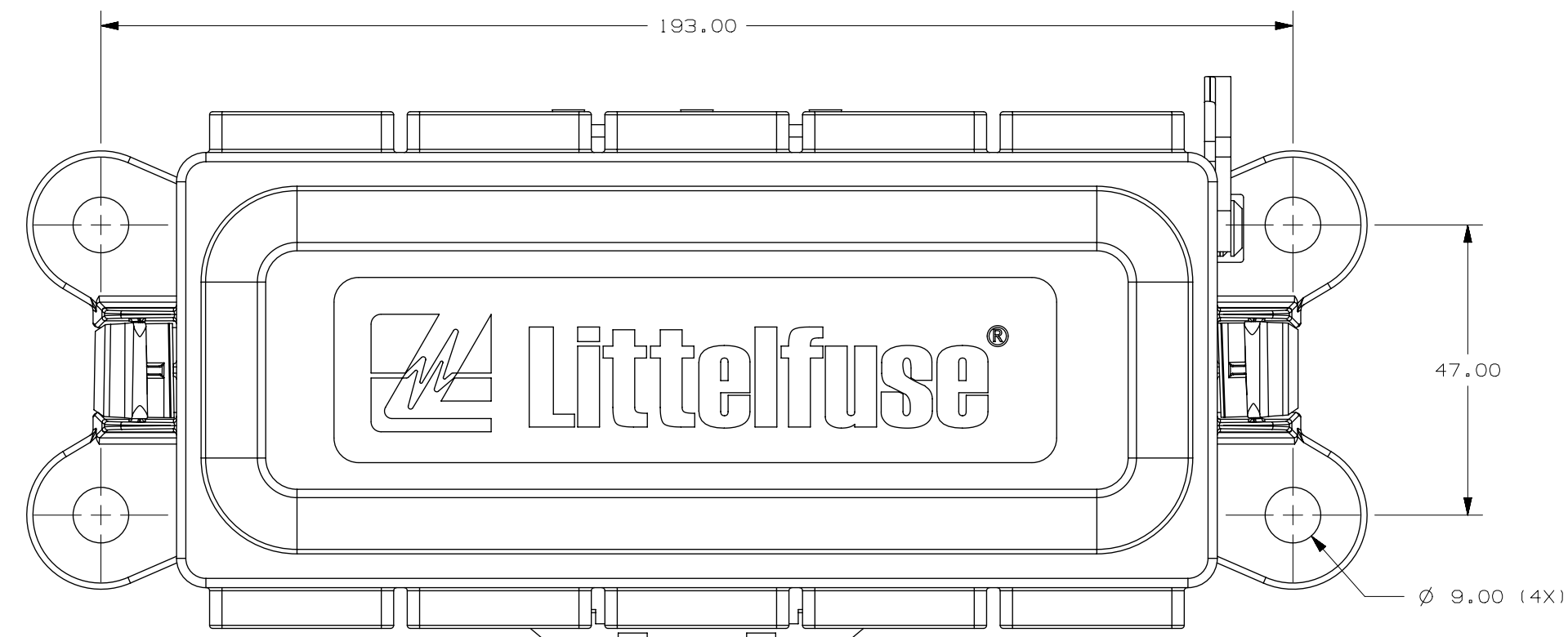


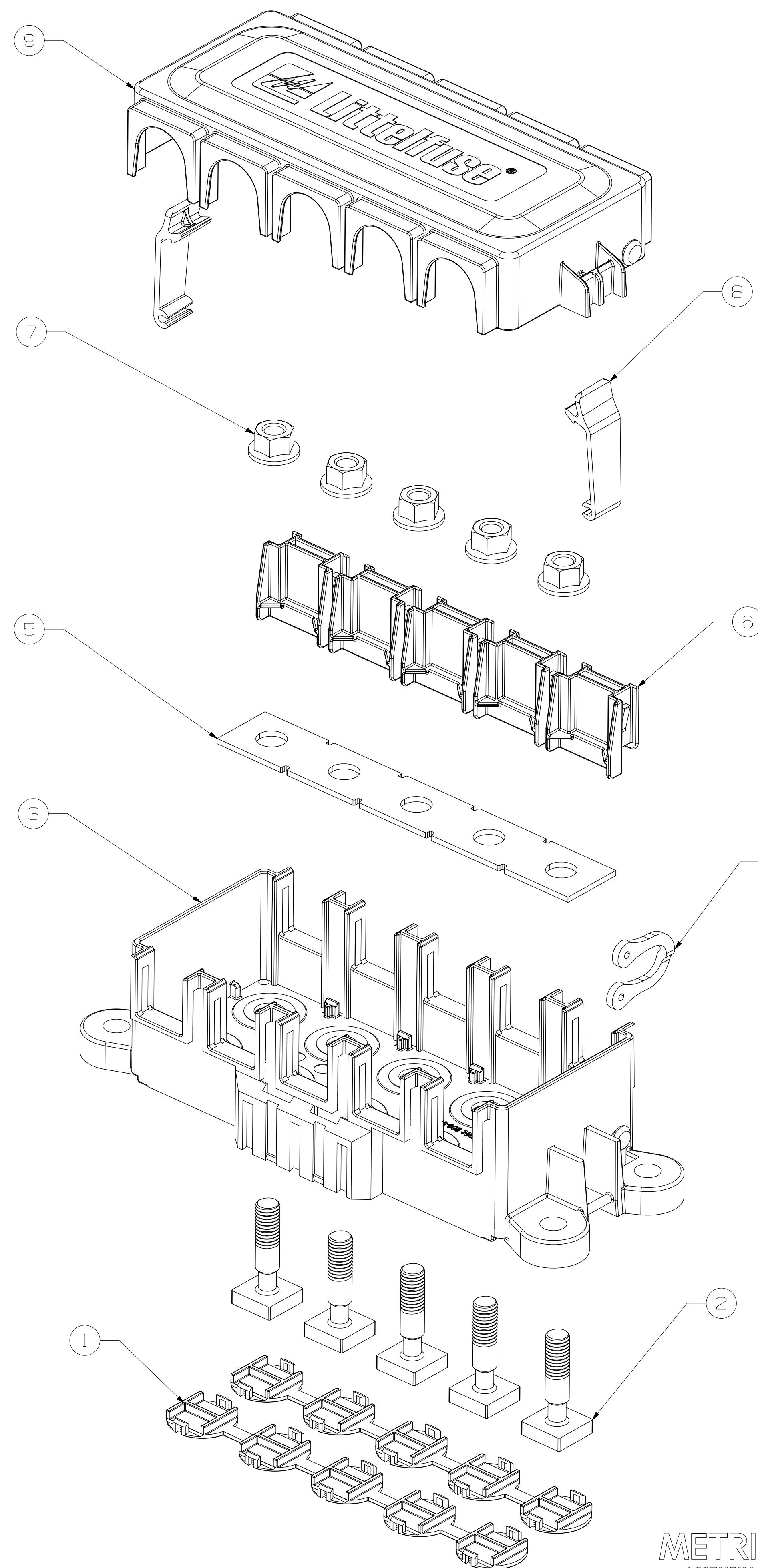
PART NUMBER	WITH BOX
OFHZ0005Z	NONE
OFHZ0005Z-BX	CA-606



NOTES:

- MATERIALS:  
 BASE/COVER: BLACK FR30  
 BUS BAR: C1100 Sn PLATED  
 TETHER: BLACK SILICON RUBBER  
 DUST COVER: GREEN SILICON RUBBER  
 STUD: STEEL Zn/FE ALLOY PLATED  
 BOTTOM CAP: BLUE PAB6  
 LATCH: YELLOW POM  
 FLANGE NUT: STAINLESS STEEL
- MAX. MAIN INPUT: 400A
- OPERATING TEMPERATURE RANGE: -40°C TO 85°C
- MS MOUNTING TORQUE: 10±2 Nm
- MAX. WIRE SIZE 105 sqmm OR AWG 4/0.

LTR	DATE	REVISION	CHK	APD
A	26/JUN/18	5184976CC-NEW RELEASE	FYUE	



NO	COMPONENT NO	DESCRIPTION	QTY/M	U/M
9	873-716	COVER	1	EA
8	883-088	LATCH	2	EA
7	980003760	MB NUT	5	EA
6	901-520	DUST COVER	5	EA
5	882-889-5	BUS BAR	1	EA
4	890009470	TETHER	1	EA
3	868-967	BASE	1	EA
2	908-067	MB STUD	5	EA
1	883-094	BOTTOM CAP	2	EA

COPIES TO		MATEL SPEC	
1	9 18	FINISH	SEE NOTE
2	10 19	DATE	26/JUN/18
3	12 20	SCALE	1:1
4	13 21	CHK	FYUE
5	14 23	DATE	26/JUN/18
6	15 33	SUPER DR	
7	16 43	DATE	26/JUN/18
8	17 53	FINISH GOOD WT	

TOLERANCE	0,5 - 3	3 - 6	6 - 30	30 - 120	120 - 400
±0,1	±0,1	±0,2	±0,3	±0,5	

TITLE	REVISION	DRWG. NO.	OUTLINE
UNSEALED 4-WAY ZCASE FUSE BOX	A	OFHZ0005Z	

METRIC ASSEMBLY

Littelfuse  
DES PLAINES, ILLINOIS 60018

CAD GENERATED DRAWING - NO PENCIL CHANGES ALLOWED