

8

7

6

5

4

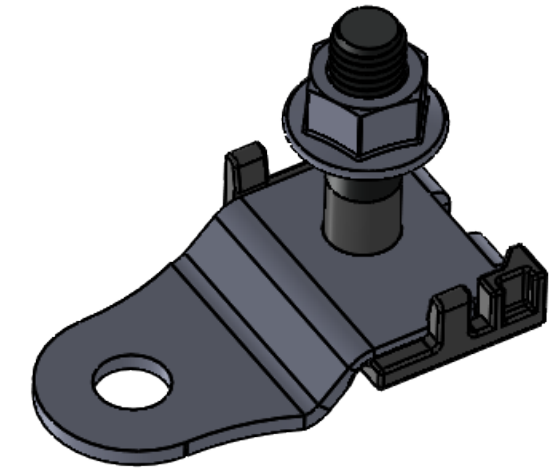
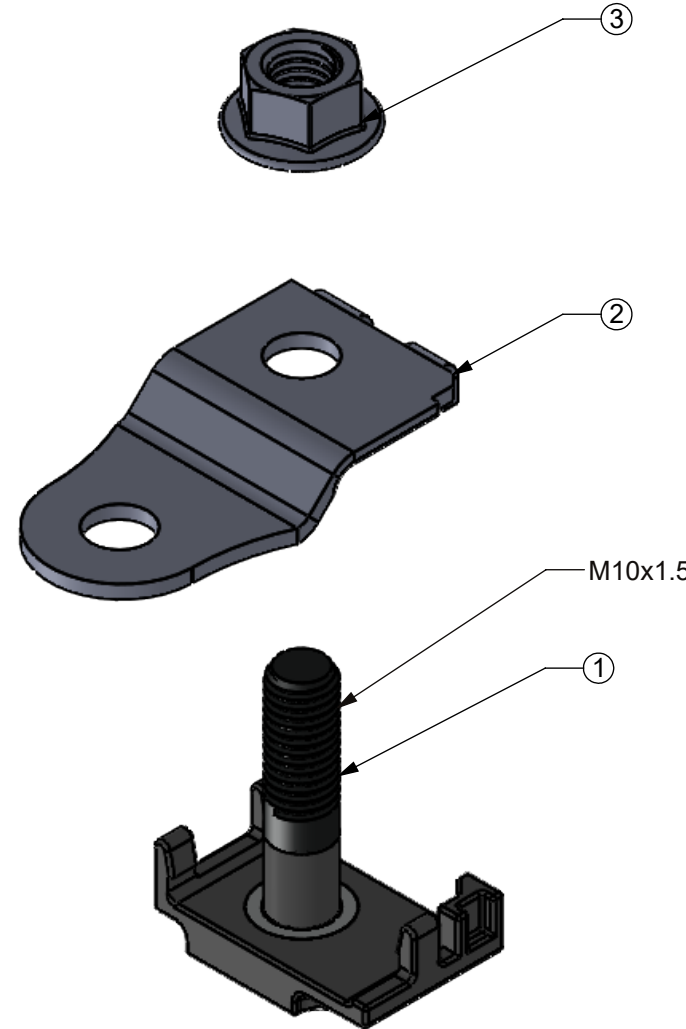
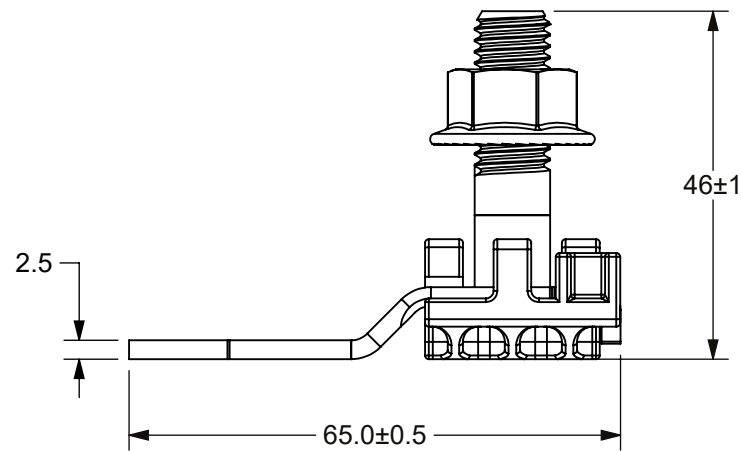
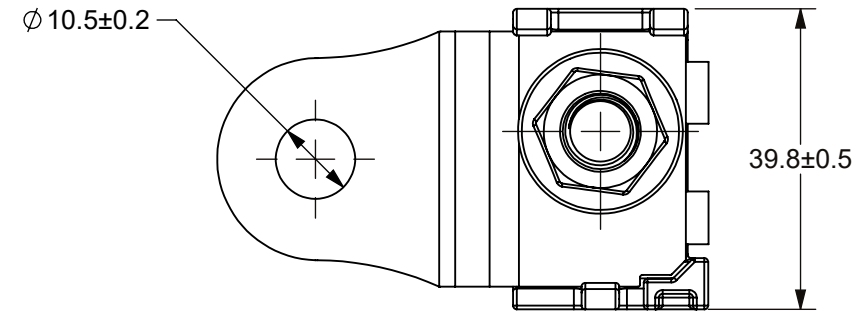
3

2

1

THIS DRAWING AND THE INFORMATION CONTAINED WITHIN IT ARE CONFIDENTIAL AND MAY NOT BE COPIED OR DISCLOSED WITHOUT THE WRITTEN PERMISSION OF LITTELFUSE.

| REVISIONS | | | | |
|-----------|------|-----------------------------|-------------|----------|
| ZONE | REV. | DESCRIPTION | DATE | APPROVED |
| | A | PCO5300241- INITIAL RELEASE | 15/FEB/2023 | Du.C |



| 3 | M10 FLANGE NUT | 1 |
|-----|----------------|------|
| 2 | BUSBAR | 1 |
| 1 | BASE | 1 |
| NO. | COMPONENT NAME | QTY. |

LIMIT DIMENSIONS OF PLASTIC MOLDED PARTS FOR NOMINAL SIZE RANGES PER ISO IN LITTELFUSE CVP-NPD20-0002, DIMENSIONS mm

| 1 to 3 | >3 to 6 | >6 to 10 | >10 to 18 | >18 to 30 | >30 to 50 | >50 to 80 | >80 to 120 | >120 to 180 | >180 to 250 | >250 to 315 | >315 to 400 | ANGLE |
|--------|---------|----------|-----------|-----------|-----------|-----------|------------|-------------|-------------|-------------|-------------|-------|
| ±0.08 | ±0.11 | ±0.14 | ±0.17 | ±0.20 | ±0.23 | ±0.36 | ±0.50 | ±0.58 | ±0.65 | ±0.70 | ±0.78 | NONE |

SURFACE PROFILE DIMENSIONS OF PLASTIC MOLDED PARTS FOR NOMINAL SIZE RANGES PER ISO IN LITTELFUSE CVP-NPD20-0002, DIMENSIONS mm

| | | | | | | | | | | | |
|------|------|------|------|------|------|------|------|-----|-----|-----|-----|
| 0.50 | 0.50 | 0.50 | 0.50 | 0.50 | 0.50 | 0.50 | 0.50 | 1.0 | 2.0 | 4.0 | 4.0 |
|------|------|------|------|------|------|------|------|-----|-----|-----|-----|

DIMENSIONS ARE SHOWN IN MILLIMETERS. DIMENSIONS AND TOLERANCES ARE DEFINED ACCORDING TO ANSI/ASME Y14.5-1994.

| PER CHI-NPD20-0008 PROCEDURE | SYMBOL | DESCRIPTION |
|------------------------------|--------|---|
| | ● | FIT/ FUNCTION CRITICAL CHARACTERISTICS |
| | <S> | SAFETY/ COMPLIANCE CRITICAL CHARACTERISTICS SYMBOL |
| | CPK | DENOTES CPK DIMENSIONS MINIMUM CPK VALUE |
| | ST | DENOTES A CHARACTERISTIC THAT PROVIDES AN INDICATION OF PROCESS PERFORMANCE. PROCEDURE FOR MEASUREMENT AND TRACKING TO BE DEFINED IN LITTELFUSE INSPECTION INSTRUCTIONS |
| | CP | DENOTES CP DIMENSIONS. -MINIMUM CP VALUE MUST BE WITHIN THE DIMENSIONAL LIMITATIONS SHOWN ON DRAWING AND INITIALLY LOCATED TO ALLOW FOR MAXIMUM TOOL LIFE |

NOTES:

- MATERIAL:
BASE: PA66-GF25, UL94-V0
STUD: CARBON STEEL (ZINC-NICKEL PLATING)
BUSBAR: COPPER C110, TIN PLATED
NUT: STAINLESS STEEL
- OPERATING TEMPERATURE RANGE: -40°C TO +105°C
- MAX CONTINUOUS CURRENT: 400A
- MAX VOLTAGE: 80V
- RECOMMENDED M10 MOUNTING TORQUE: 18±2 N-m
- LF P/N: 0FHZ0241Z

| | | | |
|------------------------------|-------------|-----------------------|--|
| DRAWN | NAME: Rex.L | DATE: 15/FEB/2022 | <p>Littelfuse Expertise Applied Answers Delivered</p> |
| CHECKED | NAME: Du.C | DATE: 15/FEB/2022 | |
| | | | |
| FORM NO: CVP-PE40-0003 REV B | | | TITLE |
| THIRD ANGLE PROJECTION | | | SMZ M10 FUSE HOLDER |
| DO NOT SCALE DRAWING | SIZE B | DWG. NO. OL-0FHZ0241Z | REV. A |
| SCALE 1:1 | | SHEET 1 OF 1 | |

8

7

6

5

4

3

2

1