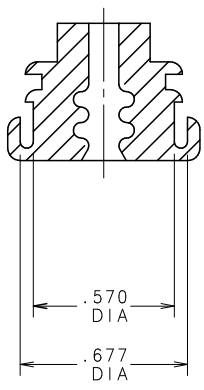


NOTES:

1. STANDING FLASH 0.025 MAXIMUM PERMISSIBLE AT PARTING LINE.
2. STANDING FLASH 0.010 MAXIMUM PERMISSIBLE ALL OTHER AREAS.
3. MATERIAL SPECIFICATION: HIGH CONSISTENCY RUBBER (HCRP)
4. CAVITY NUMBER AND MOLDING GATES PERMITTED ON THIS SURFACE. MAXIMUM HEIGHT 0.007.



868-096	GRAY	.173 DIA
868-095	BLUE	.115 DIA
PART NO	COLOR	DIA "A"

NO	COMPONENT NO	DESCRIPTION	QTY/M	U/M
BILL OF MATERIAL				
COPIES TO		MATL SPEC	SEE NOTE 3	FINISH
1	9	DRW	DHM	DATE 05/23/08
2	10	19	CHK	DATE
3	12	20	4	13 21
4	13	21	APPD	DATE
5	14	23	6	15 33
6	15	33	7	16 43
7	16	43	8	17 53
8	17	53	TOLERANCE UNLESS OTHERWISE SPECIFIED TWO PLACE DEC ±.01 FRACTION ± THREE PLACE DEC ±.005 ANGULAR ±1°	
TITLE				
SEAL SPLASH-PROOF MAXI FUSE HOLDER				
LTR		REVISION		CHK
A	000402ER 05/23/08	- RELEASED		DHM
UNLESS OTHERWISE SPECIFIED, DIMENSIONS DO NOT INCLUDE PLATING.				
CPK DENOTES CPK DIMENSIONS - MINIMUM CPK VALUE				
CP DENOTES CRITICAL CHARACTERISTICS.				
CPK DENOTES CPK DIMENSIONS - MINIMUM CPK VALUE				
CP DENOTES A CHARACTERISTIC THAT PROVIDES AN INDICATION OF PROCESS PERFORMANCE. THE PROCEDURE FOR MEASUREMENT SHALL BE IDENTIFIED IN THE DRAWING OR IN THE INSTRUCTIONS.				
CP DENOTES CP DIMENSIONS - MINIMUM CP VALUE				
CP DENOTES A DIMENSIONAL LIMITATION WHICH IS RESPONSIBLE FOR MAXIMUM TOOL LIFE.				
UNLESS OTHERWISE SPECIFIED, DIMENSIONS DO NOT INCLUDE PLATING.				
CPK DENOTES CRITICAL CHARACTERISTICS.				
CPK DENOTES CPK DIMENSIONS - MINIMUM CPK VALUE				
CP DENOTES A CHARACTERISTIC THAT PROVIDES AN INDICATION OF PROCESS PERFORMANCE. THE PROCEDURE FOR MEASUREMENT SHALL BE IDENTIFIED IN THE DRAWING OR IN THE INSTRUCTIONS.				
CP DENOTES CP DIMENSIONS - MINIMUM CP VALUE				
CP DENOTES A DIMENSIONAL LIMITATION WHICH IS RESPONSIBLE FOR MAXIMUM TOOL LIFE.				
REVISION		DRAWG. NO.		OUTLINE
A		868-095		868-096
DES PLAINES, ILLINOIS 60016		Littelfuse®		A

UNCONTROLLED DOCUMENT