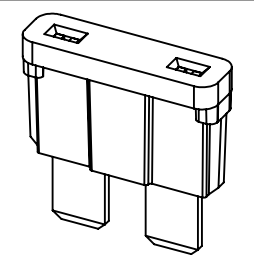
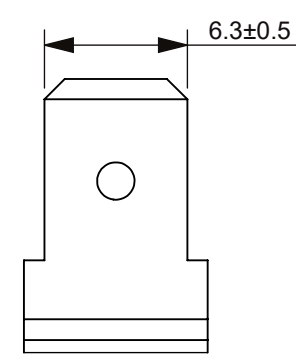
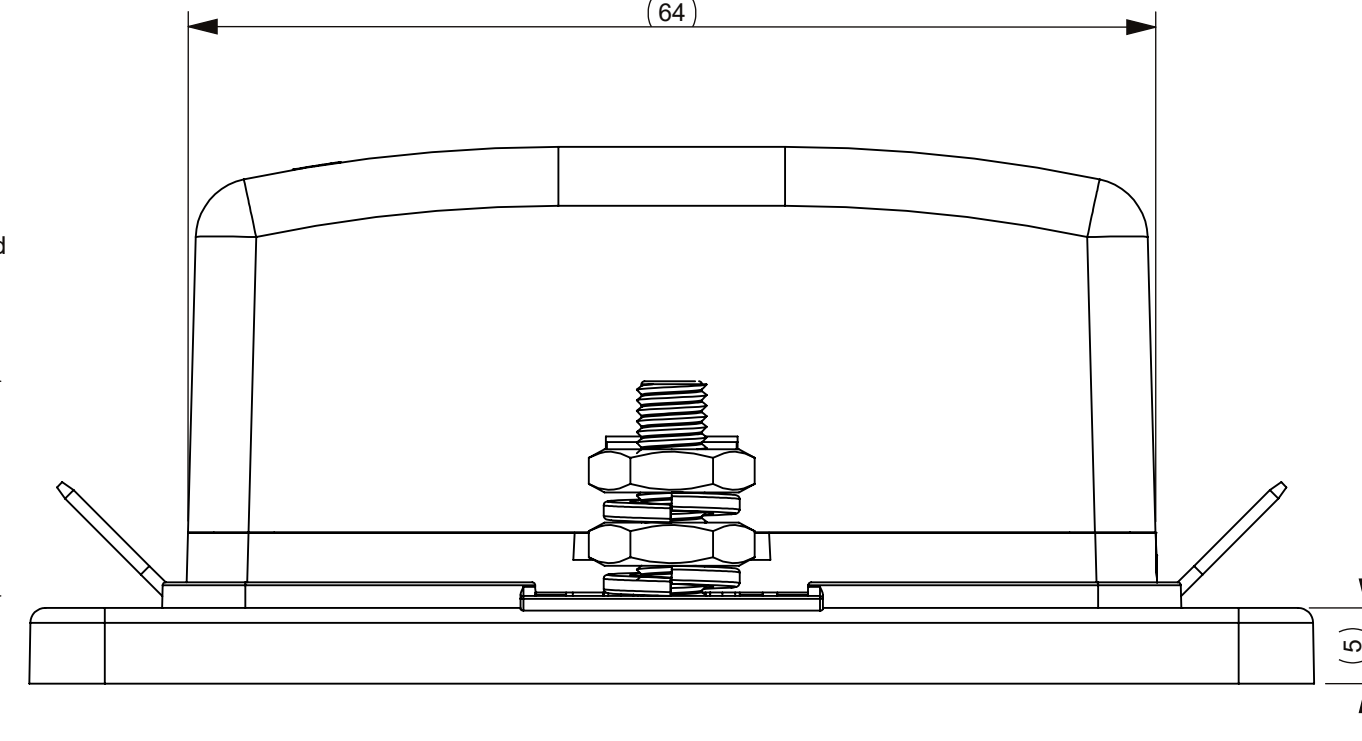
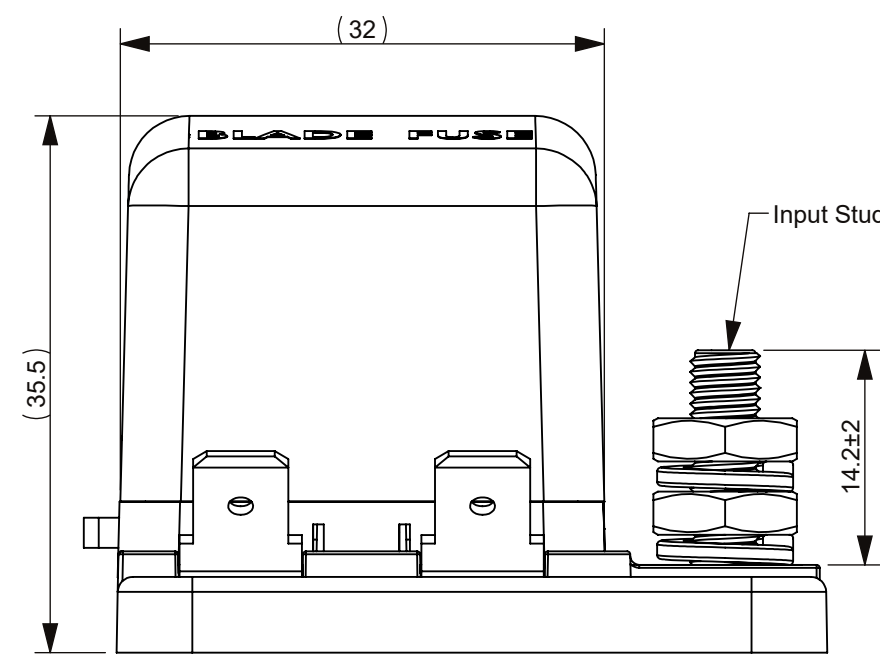
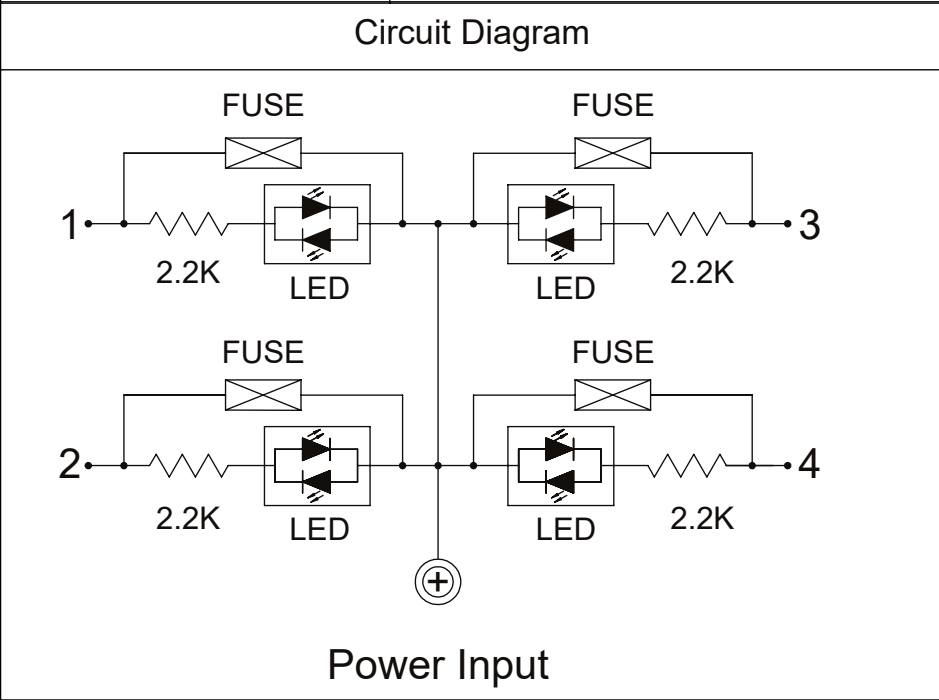
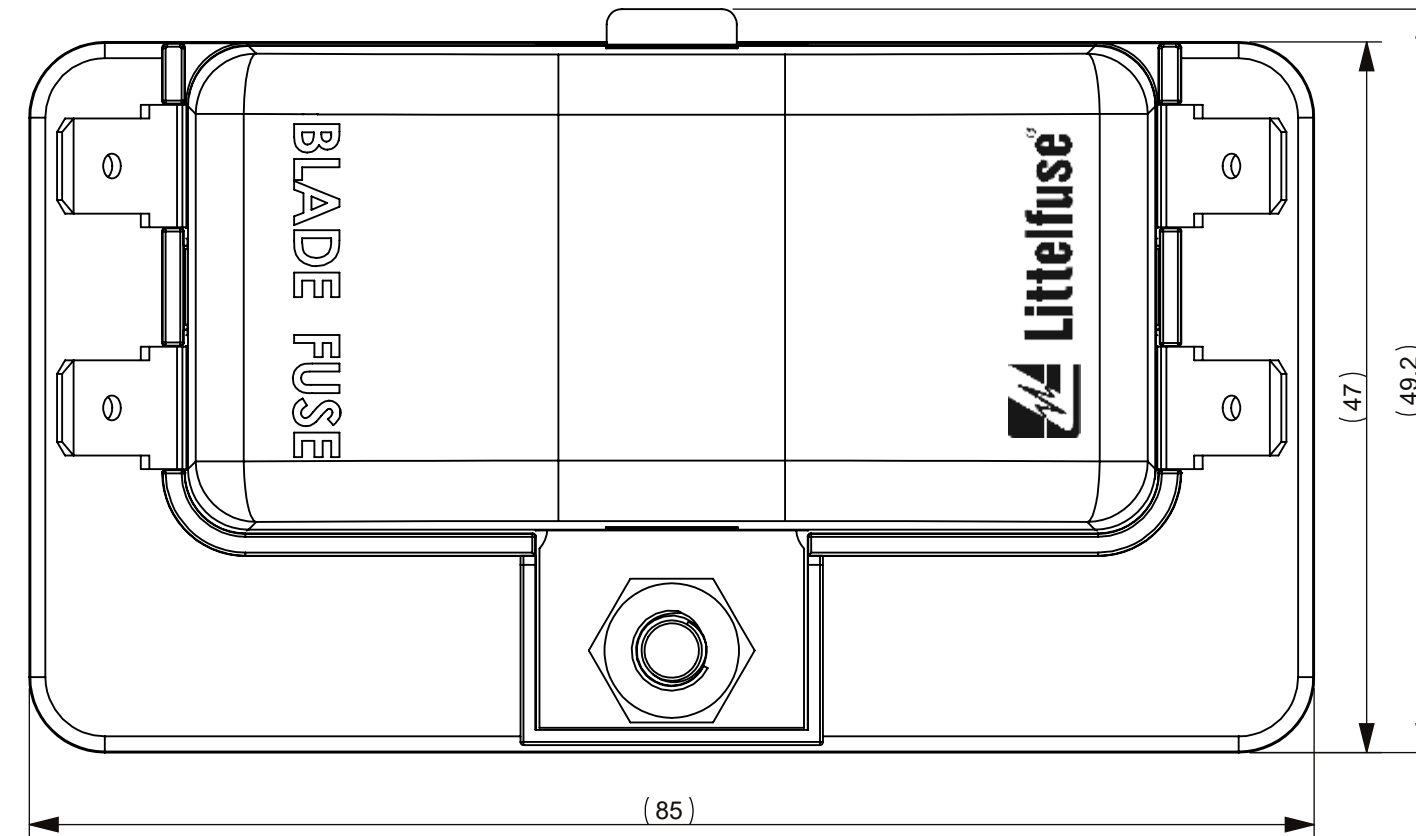


THIS DRAWING AND THE INFORMATION CONTAINED WITHIN IT ARE CONFIDENTIAL AND MAY NOT BE COPIED OR DISCLOSED WITHOUT THE WRITTEN PERMISSION OF LITTELFUSE.

| REVISIONS |      |  |             |          |
|-----------|------|--|-------------|----------|
| ZONE      | REV. | DESCRIPTION  | DATE        | APPROVED |
|           | A    | 522970GCC NEW RELEASE DRAWING                          | 03/MAR/2021 | EDWARD.J |
|           | B    | 523692 ECC CHANGE THE MOLDED CONTENTS TO LASER MARKING | 11/MAY/2021 | EDWARD.J |


|                                 |                                 |   |  |
|---------------------------------|---------------------------------|---|--|
| Voltage (Max.)                  | 32VDC                           | Mounting Screw  | Blade Fuse Isometric View  |
| Input Terminal Rating           | #10-32 Threaded Studs(100A Max) | 2x M5xP0.8xL25  |  |
| Output Terminal Rating          | 30A Max. Per Circuit            |   |  |
| Connection Pad Option Available | Input Wire Size:#4-6 AWG        | Terminal Dim  | Blade Fuse Dim   |
|                                 | Output Wire Size:#12-16AWG      |   |  |
| Fuse Specifications             | For ATO Blade Fuses Only        |  | ATO SERIES   |
| Torque Rating for Input Stud    | 2.25+0/-0.2Nm(20 in-lb)         |   |  |
| Mounting Torque Rating          | 0.9+0/-0.1Nm(8 in-lb)           |   |  |
| Temperature Rating              | -20 ° C to +85 °C               |   |  |



- NOTES:**
- MATERIALS:**  
 BASE/HOUSING: BLACK PBT  
 COVER: TRANSPAREANCE PC  
 TERMINAL:TINNED COPPER  
 PUSH BOTTOM:POM WHITE
  - FUSES ASSEMBLY BY HANDS.
  - ALL FUSES MUST NOT EXCEED 70% OF RATED CURRENT
  - RED LED INDICATES WHEN FUSE IS BROKEN.

DIMENSIONS ARE SHOWN IN MILLIMETERS. DIMENSIONS AND TOLERANCES ARE DEFINED ACCORDING TO ANSI/ASME Y14.5-1994.

|      |  |
|------|--|
| ●    | FIT FUNCTION CRITICAL CHARACTERISTICS SYMBOL   |
| <S>  | SAFETY/ COMPLIANCE CRITICAL CHARACTERISTICS SYMBOL   |
| CPK  | DENOTES CPK DIMENSIONS MINIMUM CPK VALUE   |
| (ST) | DENOTES A CHARACTERISTIC THAT PROVIDES AN INDICATION OF PROCESS PERFORMANCE PROCEDURE FOR MEASUREMENT AND TRACKING TO BE DEFINED IN LITTELFUSE INSPECTION INSTRUCTIONS |
| CP   | DENOTES CP DIMENSIONS - MINIMUM CP VALUE MUST BE WITHIN THE DIMENSIONAL LIMITATIONS SHOWN ON DRAWING AND INITIALLY LOCATED TO ALLOW FOR MAXIMUM TOOL LIFE              |

|   |           |                         |             |   |   |                           |           |              |   |
|---|-----------|-------------------------|-------------|---|---|---------------------------|-----------|--------------|---|
| DIMENSION: MM TOLERANCES UNLESS OTHERWISE SPECIFIED |           | ONE PLACE DECIMAL ± 0.5 |             | THREE PLACES DECIMAL ± 0.100  |   | TWO PLACES DECIMAL ± 0.20 |           | ANGULAR ± 2° |   |
| BROWN   | Sunny Pan | DATE                    | 22/OCT/2020 | <br><b>Expertise Applied   Answers Delivered</b> |   |                           |           |              |   |
| CHECKED   | Jason Li  | DATE                    | 22/OCT/2020 |   |   |                           |           |              |   |
| FORM NO: CVP-PE40-0006 REV A                        |           |                         |             | TITLE   |   |                           |           |              |   |
| THIRD ANGLE PROJECTION                              |           |                         |             | STD DUTY ATO PDM 4POS   |   |                           |           |              |   |
| DO NOT SCALE DRAWING                                |           | SCALE                   | 2:1         | SIZE  | C | DWG. NO.                  | OL-880021 | REV.         | B |
|   |           |                         |             | SHEET 1 OF 1  |   |                           |           |              |   |

