

THIS DRAWING AND THE INFORMATION CONTAINED WITHIN IT ARE CONFIDENTIAL AND MAY NOT BE COPIED OR DISCLOSED WITHOUT THE WRITTEN PERMISSION OF LITTELFUSE.

PART NUMBER	DESCRIPTION	COLOR	FIGURE
923-025-001	3/8" STUD CAP	RED	2
923-025-002	3/8" STUD CAP	BLACK	2
923-025-003	M8 STUD CAP	RED	1
923-025-004	M8 STUD CAP	BLACK	1

REVISIONS				
ZONE	REV.	DESCRIPTION	DATE	APPROVED
	A	PCO #5300217. INITIAL RELEASE. DSILVA.	2/23/2023	S. CASTILLO

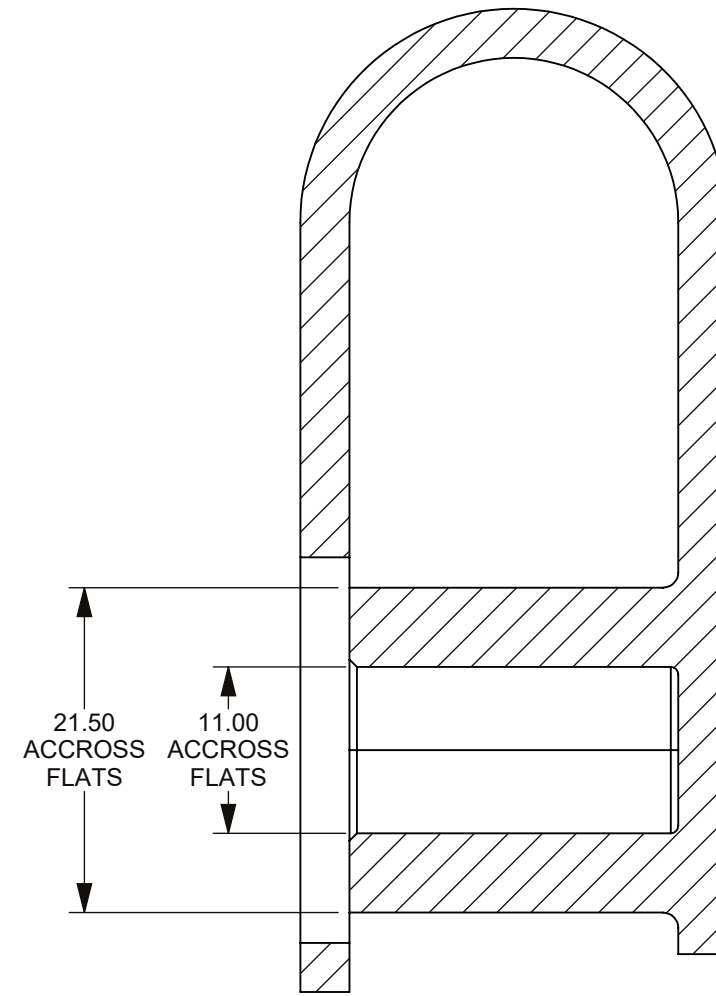
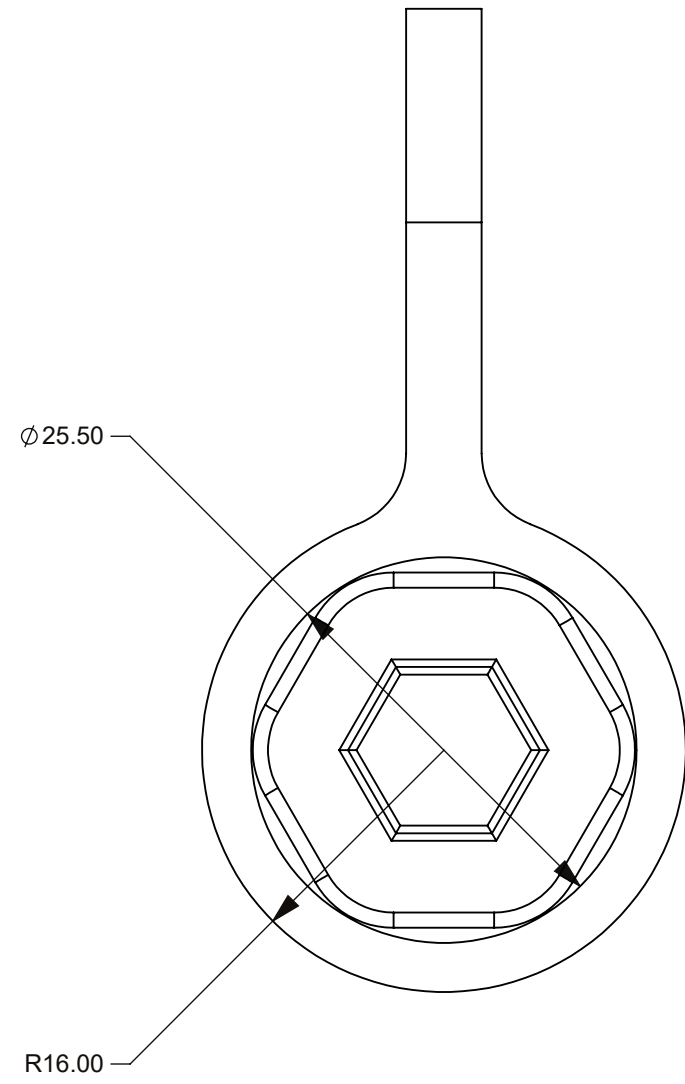


FIGURE 1. M8 STUD CAP

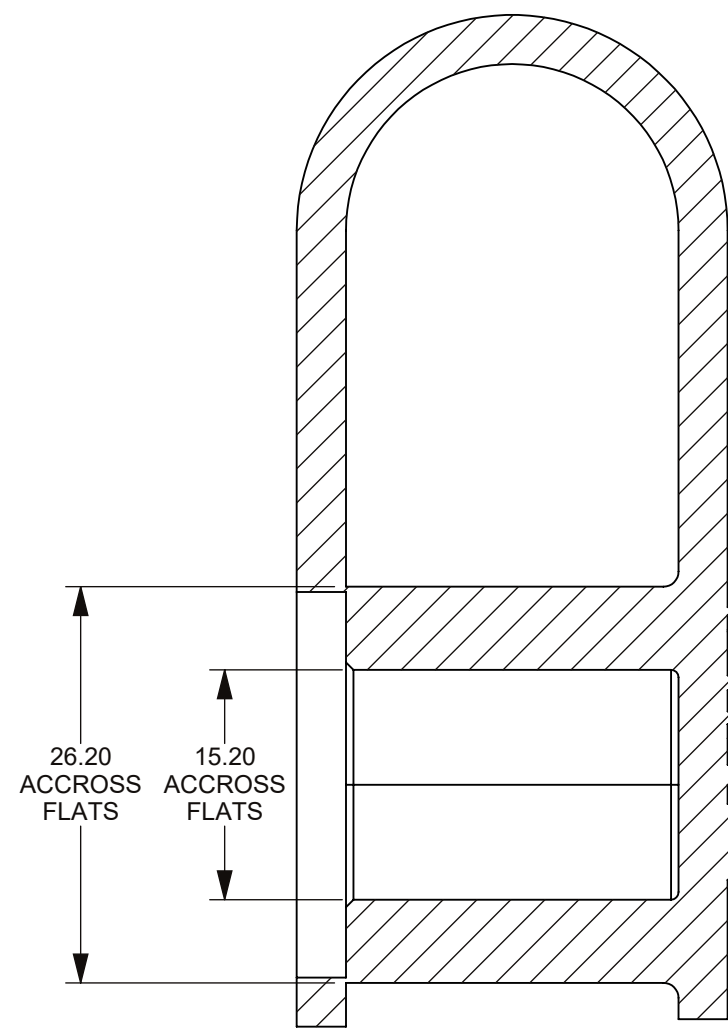
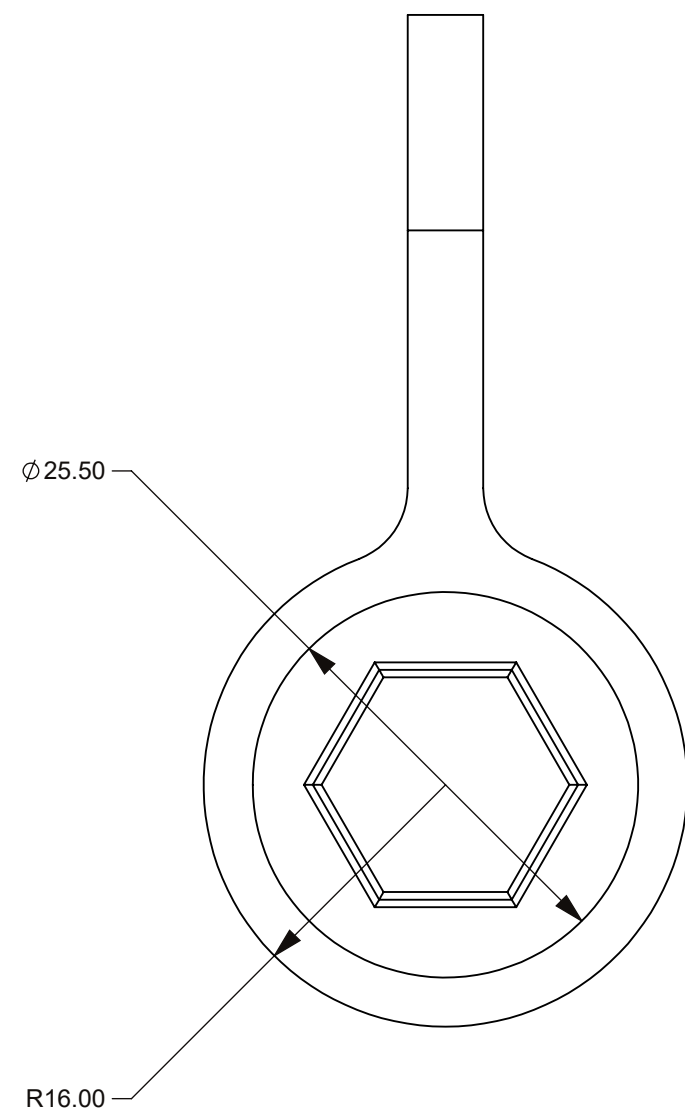
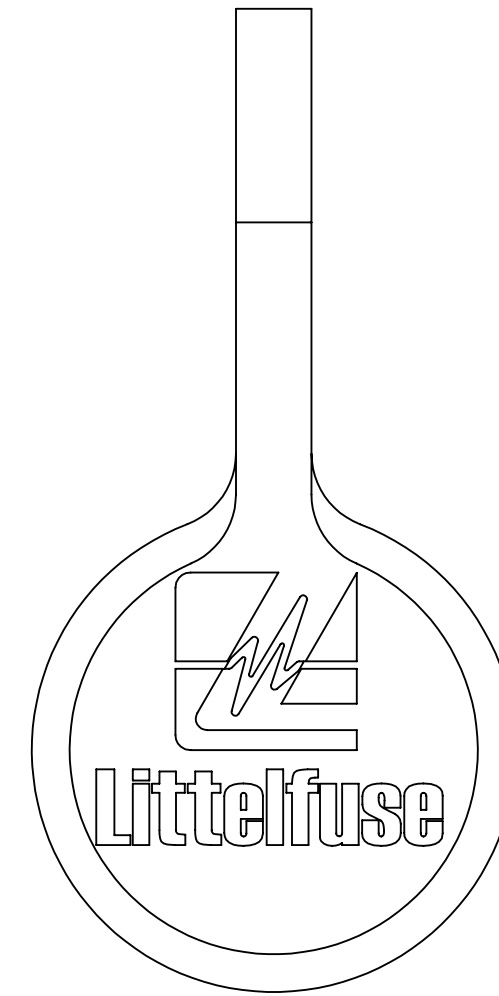
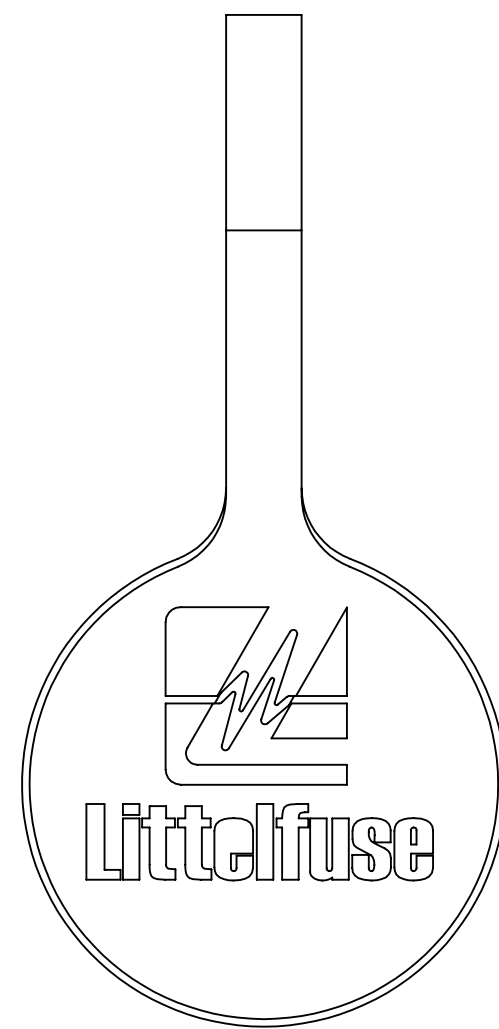


FIGURE 2. 3/8" STUD CAP



NOTES:
1. MATERIAL: SILICONE

NO.	COMPONENT NO.	COMPONENT NAME	QTY	U
TOLERANCES UNLESS OTHERWISE SPECIFIED (REF. ISO 2768-H)				
.5 to 3	>3 to 6	>6 to 30	>30 to 120	>120 to 400
±0.05	±0.05	±0.10	±0.15	±0.20
ANGLE				
NONE				
DIMENSIONS ARE SHOWN IN MILLIMETERS. DIMENSIONS AND TOLERANCES ARE DEFINED ACCORDING TO ANSI/ASME Y14.5-1994.				
●	FIT/ FUNCTION CRITICAL CHARACTERISTICS			
<S>	SAFETY/ COMPLIANCE CRITICAL CHARACTERISTICS SYMBOL			
CPK	DENOTES CPK DIMENSIONS MINIMUM CPK VALUE			
(ST)	DENOTES A CHARACTERISTIC THAT PROVIDES AN INDICATION OF PROCESS PERFORMANCE PROCEDURE FOR MEASUREMENT AND TRACKING TO BE DEFINED IN LITTELFUSE INSPECTION INSTRUCTIONS			
CP	DENOTES CP DIMENSIONS. -MINIMUM CP VALUE MUST BE WITHIN THE DIMENSIONAL LIMITATIONS SHOWN ON DRAWING AND INITIALLY LOCATED TO ALLOW FOR MAXIMUM TOOL LIFE			
DRAWN		NAME	DATE	
CHECKED		NAME	DATE	
FORM NO. CVP-PE40-0005 REV B				
THIRD ANGLE PROJECTION				
DO NOT SCALE DRAWING		SCALE 2:1	SHEET 1 OF 1	
Littelfuse		Expertise Applied Answers Delivered		
TITLE		STUD CAPS		
SIZE C	DWG. NO. OL-923-025-000	REV. A		
OUTLINE				