

REVISIONS				
ZONE	REV.	DESCRIPTION	DATE	APPROVED
	A	GCF#524592 INITIAL RELEASE	SEP./23/2021	D. ZHANG

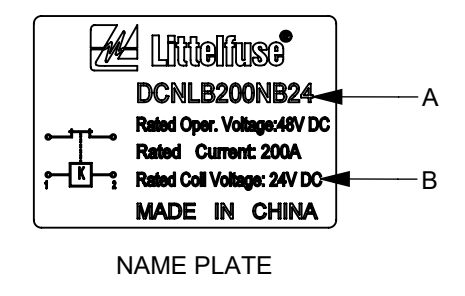
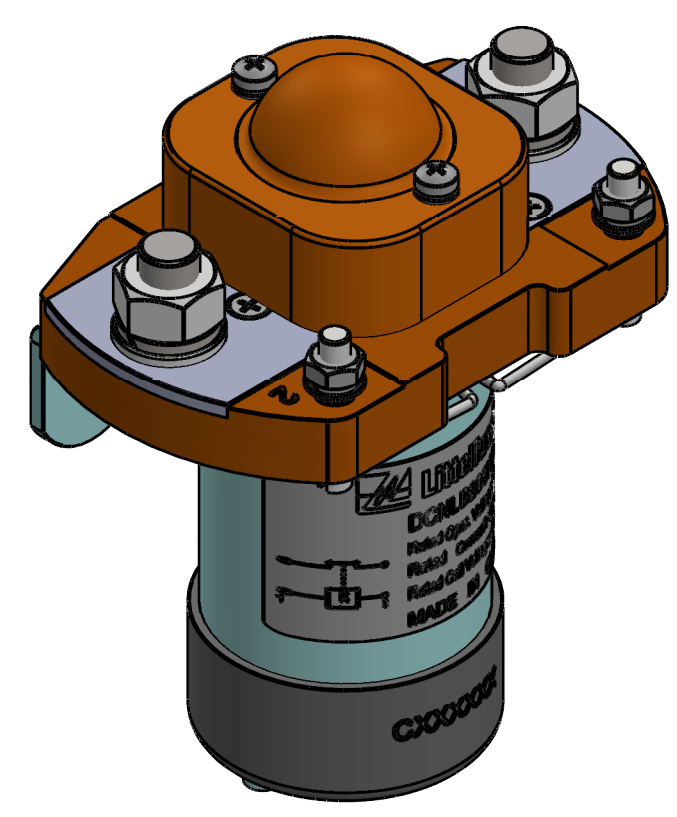
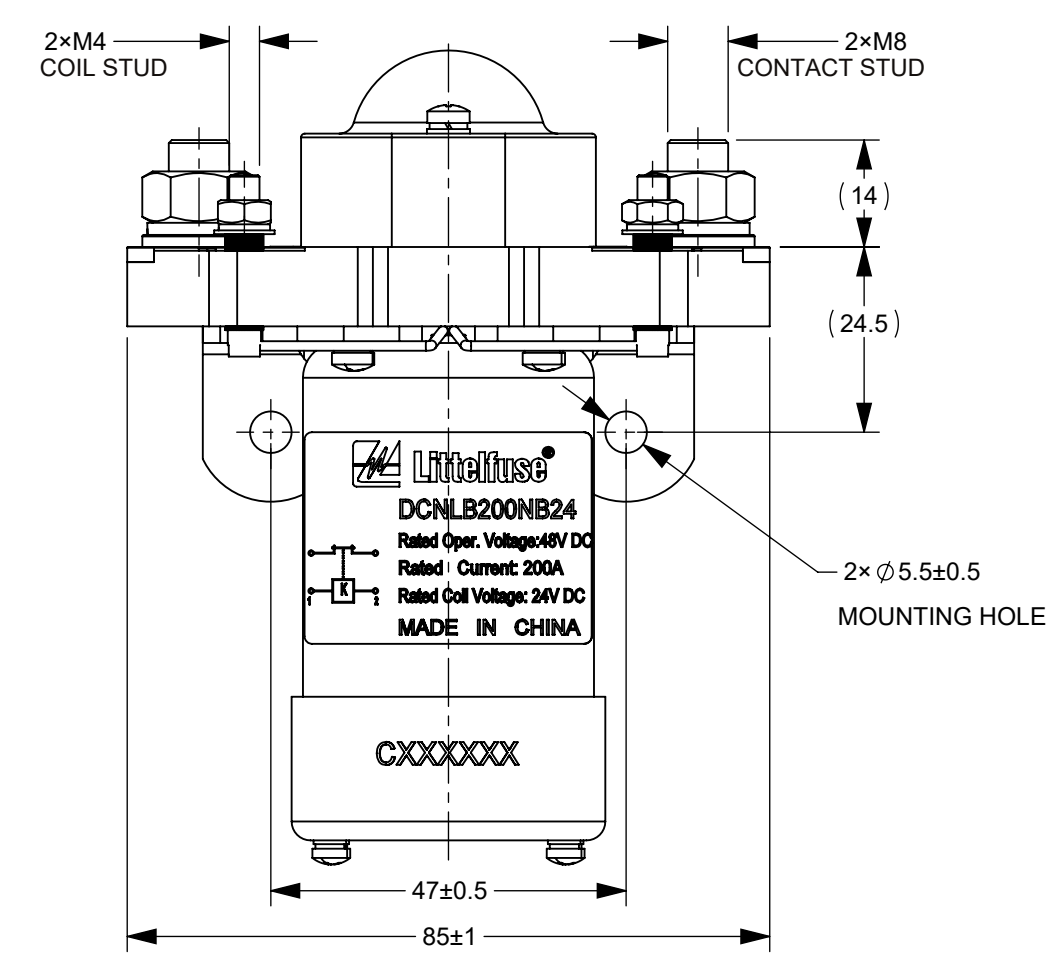
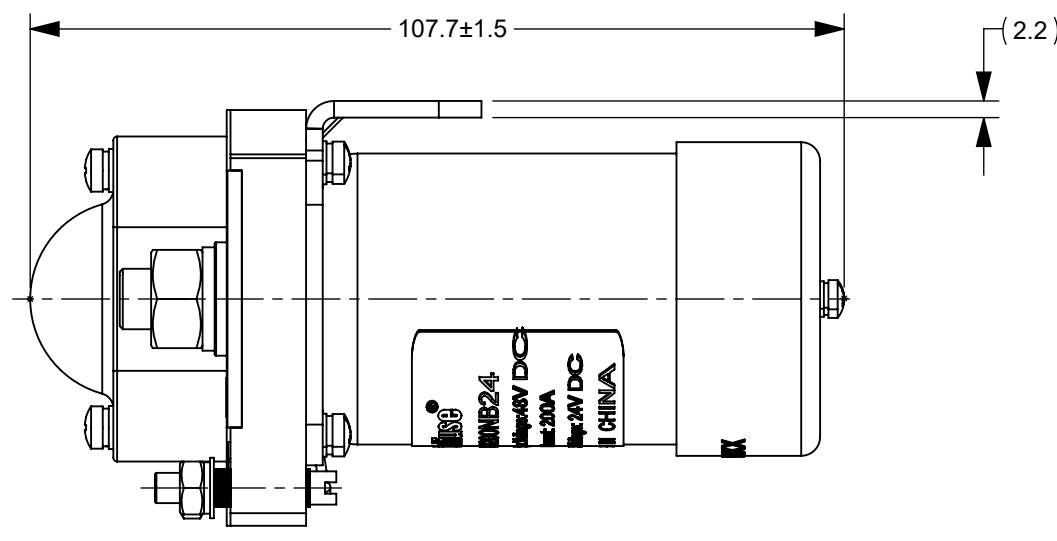
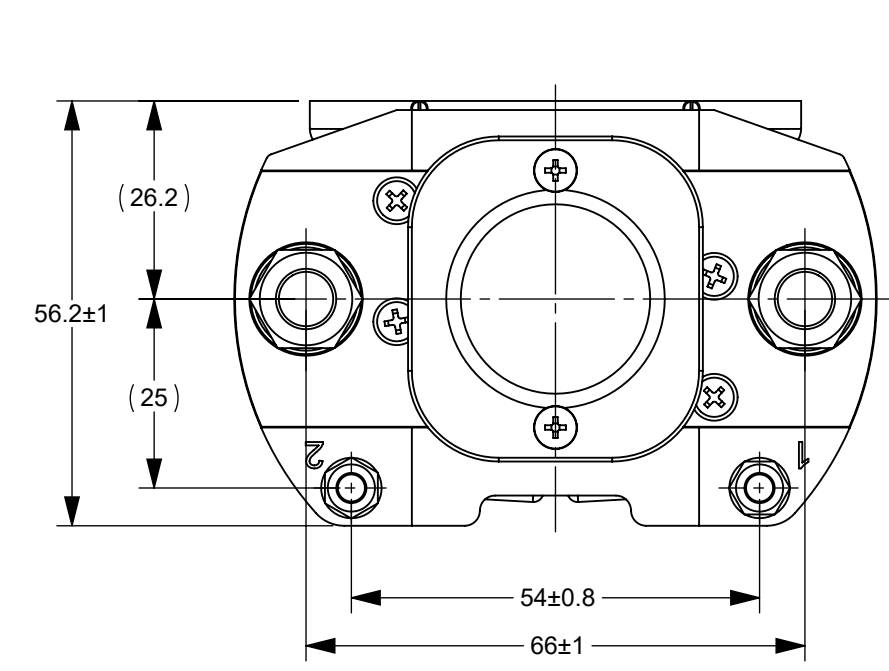


TABLE 1: TECHNICAL PARAMETERS

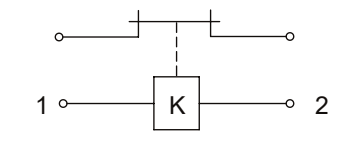
ITEM	PARAMETER			
	DCNLB200NB24	DCNLB200NB48	DCNLB200NB60	
HOLD POWER	START POWER	MAX 15W		
	MAINTAIN POWER	MAX 15W		
MAXIMUM CONTACT VOLTAGE	60V DC			
RATED CONTACT VOLTAGE	48V DC			
RATED CONTACT CURRENT	200A			
RATED COIL VOLTAGE	24V DC	48V DC	60V DC	
OPERATING VOLTAGE IN COLD STATE @ (20±5)°C	PICKUP	17V DC MAX	34V DC MAX	42V DC MAX
	RELEASE	2V DC MIN	4V DC MIN	5V DC MIN
OPERATE TIME	MAX 50ms			
RELEASE TIME	MAX 50ms			
BOUNCE TIME	MAX 12ms			
CONTACT VOLTAGE DROP	≤50mV@100 A			
LIMIT BREAKING ABILITY	4Ie/5ms, 1CYCLES			
DIELECTRIC STRENGTH	1000V AC, 50Hz, 1min., LEAKAGE CURRENT ≤1 mA			
INSULATION RESISTANCE	≥50MΩ@500VDC			
ELECTRIC LIFE	3000 CYCLES			
MECHANICAL LIFE	100,000 CYCLES			
WORKING DUTY	CONTINUOUS			

TABLE 2 OPERATING VOLTAGE PARAMETER

NO.	PN	NAME PLATE		REMARK
		"A" OF NAME PLATE	"B" OF NAME PLATE	
1	DCNLB200NB24	DCNLB200NB24	Rated Coil Voltage: 24V DC	
2	DCNLB200NB48	DCNLB200NB48	Rated Coil Voltage: 48V DC	
3	DCNLB200NB60	DCNLB200NB60	Rated Coil Voltage: 60V DC	

- NOTES:
- ALL SIZES ARE FOR REFERENCE ONLY.
 - SEE TABLE 2 FOR CONFIGURATION OF NAME PLATE, OPERATING VOLTAGE AND PNs.
 - MATERIALS AND FINISHING:
 - 1 BASE: THERMOSETTING PLASTIC, UL94V-0.
 - 2 CONTACTS: SILVER ALLOY.
 - 3 COIL STUD: COPPER ALLY, SILVER PLATED.
 - PRODUCT TECHNICAL PARAMETERS: SEE TABLE 1.
 - 4.1 CONTACT ARRANGEMENT: SPST-NC.
 - 4.2 CONNECTION STUD: M8 STUD, RECOMMENDED TORQUE 9 N•m ~ 11 N•m; M4 STUD, RECOMMENDED TORQUE 1.7 N•m ~ 2.5 N•m.
 - 4.3 MOUNTING: M5 BOLT, RECOMMENDED TORQUE 4 N•m ~ 5 N•m.

CIRCUIT SCHEMATIC DIAGRAM



DIMENSIONS ARE SHOWN IN MILLIMETERS. DIMENSIONS AND TOLERANCES ARE DEFINED ACCORDING TO ANSI/ASME Y14.5-1994.

PER CHNFPD20-008 PROCEDURE

- FIT/ FUNCTION CRITICAL CHARACTERISTICS
- <S> SAFETY/ COMPLIANCE CRITICAL CHARACTERISTICS SYMBOL
- CPK DENOTES CPK DIMENSIONS MINIMUM CPK VALUE
- (ST) DENOTES A CHARACTERISTIC THAT PROVIDES AN INDICATION OF PROCESS PERFORMANCE PROCEDURE FOR MEASUREMENT AND TRACKING TO BE DEFINED IN LITTELFUSE INSPECTION INSTRUCTIONS
- CP DENOTES CP DIMENSIONS. MINIMUM CP VALUE MUST BE WITHIN THE DIMENSIONAL LIMITATIONS SHOWN ON DRAWING AND INITIALLY LOCATED TO ALLOW FOR MAXIMUM TOOL LIFE

DRAWN	JY. SHI	SEP./8/2021	<p>Expertise Applied Answers Delivered</p>
CHECKED	J. LI	SEP./15/2021	
FORM NO. CVP-PE40-0005 REV B			TITLE
THIRD ANGLE PROJECTION			DCNLB 200A 48V CONTACTOR
DO NOT SCALE DRAWING	SCALE 1:1	SHEET 1 OF 1	REV. A