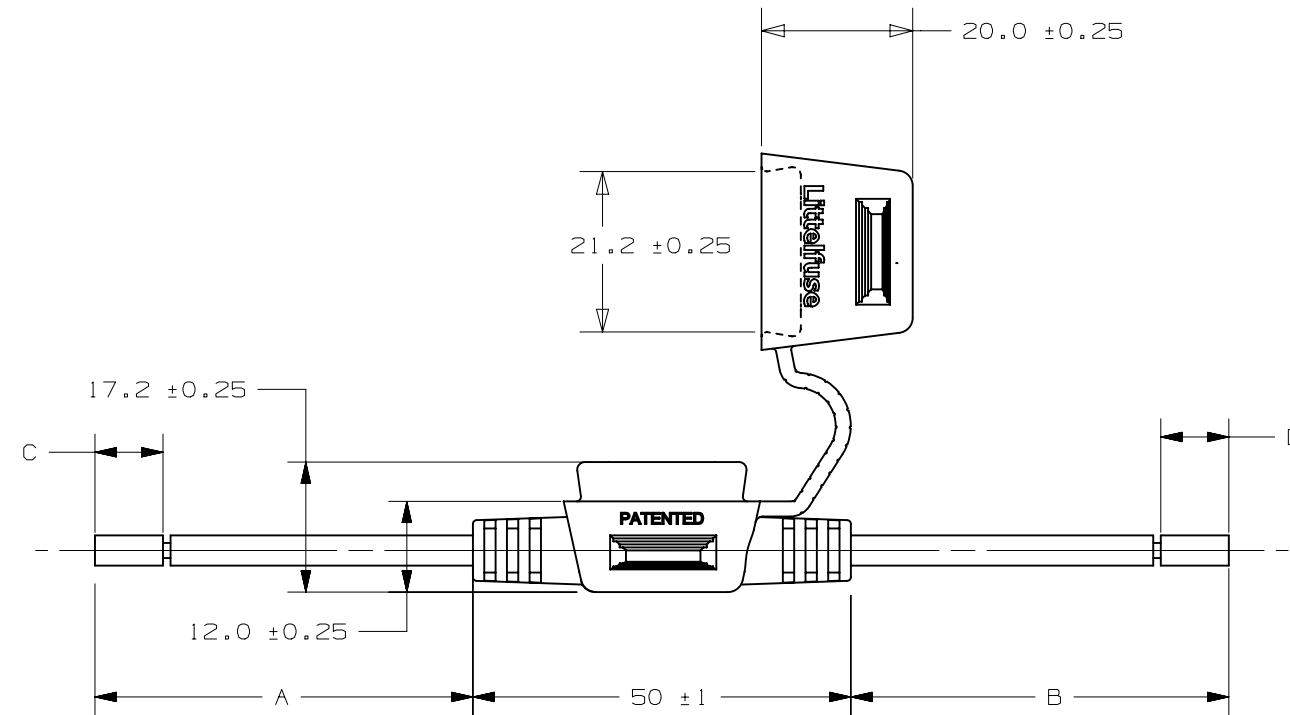
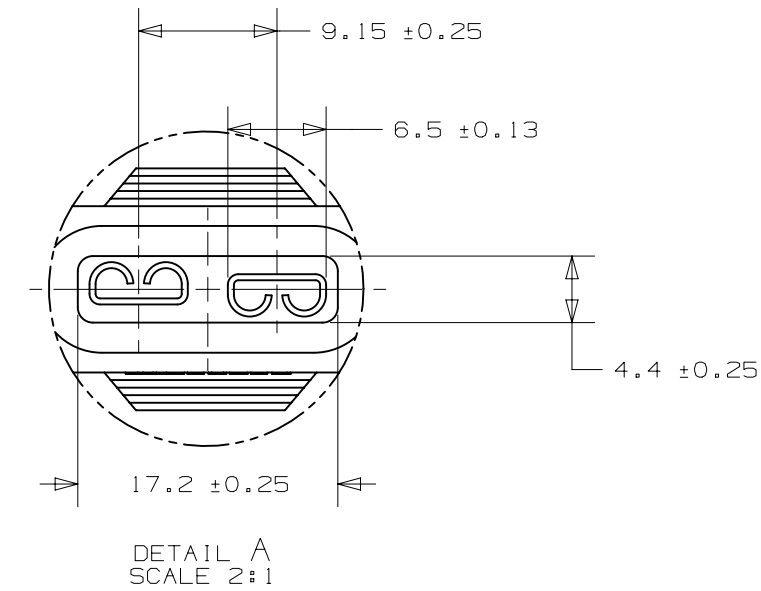
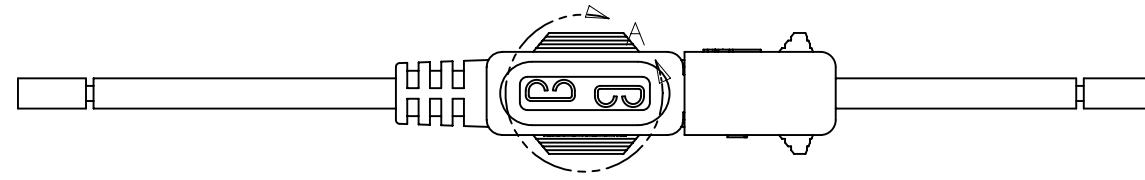


| PART NUMBER  | "A"               | "B"               | "C"              | "D"              | LEAD "A" COLOR          | LEAD "B" COLOR          |
|--------------|-------------------|-------------------|------------------|------------------|-------------------------|-------------------------|
| FHAC0003ZXJA | 89.3±5<br>(3.516) | 89.3±5<br>(3.516) | 6.35±2<br>(0.25) | 6.35±2<br>(0.25) | RED                     | RED                     |
| FHAC0003ZXJB | 89.3±5<br>(3.516) | 89.3±5<br>(3.516) | 6.35±2<br>(0.25) | 6.35±2<br>(0.25) | RED WITH<br>BLUE STRIPE | RED WITH<br>BLUE STRIPE |

| LTR | DATE     | REVISION   | CHK | APD |
|-----|----------|--|-----|-----|
| A   | 11/21/07 | 00021BER-RELEASE FHAC0003ZXJA AND FHAC0003ZXJB DHM |     |     |
| B   | 04/30/15 | 511837ECA-REMOVE MODEL NAME OF HOLDER MATERIAL     |     |     |
|     |          |  |     |     |
|     |          |  |     |     |
|     |          |  |     |     |
|     |          |  |     |     |
|     |          |  |     |     |

- NOTES:
- HOLDER MATERIAL: BLACK TPV
  - CONTACTS: COPPER ALLOY TIN-PLATED
  - WIRE: 14 AWG STRANDED COPPER, 125°C RATED, GXL WIRE
  - CRIMP: MUST MEET SAE/J58CAR 21 STANDARD
  - RATING: MAX. 25A, 32Vdc
  - MAX TEMPERATURE 105°C
  - DATE CODE AND MOLD CAVITY NUMBER MARKED ON ALL UNITS.



|  |   |          |                          |
|--|---|----------|--------------------------|
| UNLESS OTHERWISE SPECIFIED, DIMENSIONS ARE IN MILLIMETERS. DIMENSIONS IN BRACKETS [ ] ARE INCHES |   |          |                          |
| UNLESS OTHERWISE SPECIFIED, DIMENSIONS DO NOT INCLUDE PLATING.                                   |   |          |                          |
| ⊙  | DENOTES CRITICAL CHARACTERISTICS.   |          |                          |
| CPK  | DENOTES CPK DIMENSIONS, -MINIMUM CPK VALUE  |          |                          |
| ⊙ST  | DENOTES A CHARACTERISTIC THAT PROVIDES AN INDICATION OF PROCESS PERFORMANCE. PROCEDURE FOR MEASUREMENT AND TRACKING TO BE DEFINED IN LITTELFUSE INSPECTION INSTRUCTIONS |          |                          |
| CP   | DENOTES CP DIMENSIONS, -MINIMUM CP VALUE MUST BE WITHIN THE DIMENSIONAL LIMITATIONS SHOWN ON DRAWING AND INITIALLY LOCATED TO ALLOW FOR MAXIMUM TOOL LIFE               |          |                          |
| COPIES TO  | MATL SPEC SEE NOTES   |          |                          |
| 1 9 18   | FINISH SEE NOTES  |          |                          |
| 2 10 19  | DRW   | DATE     | SCALE                    |
| 3 12 20  | DHM   | 11/21/07 | 1:1                      |
| 4 13 21  | CHK   | DATE     | SUPER DR                 |
| 5 14 23  | APPD  | DATE     | FINSH GOOD WT            |
| 6 15 33  |   |          | GRAMS/PIECE              |
| 7 16 43  |   |          |                          |
| 8 17 53  |   |          |                          |
| TOLERANCE UNLESS OTHERWISE SPECIFIED   |   |          |                          |
| ONE PLACE DEC  | +/- .3  |          | THREE PLACE DEC +/- .100 |
| TWO PLACE DEC  | +/- .25   |          | ANGULAR +/- 1°           |
| 3RD ANGLE PROJECTION   | TITLE ATO IN-LINE FUSEHOLDER  |          |                          |
| Littelfuse   |   | REVISION | DRWG. NO. OUTLINE SERIES |
| DES PLAINES, ILLINOIS 60016  |   | B        | FHAC0003ZXJ              |

METRIC

CAD GENERATED DRAWING - NO PENCIL CHANGES ALLOWED