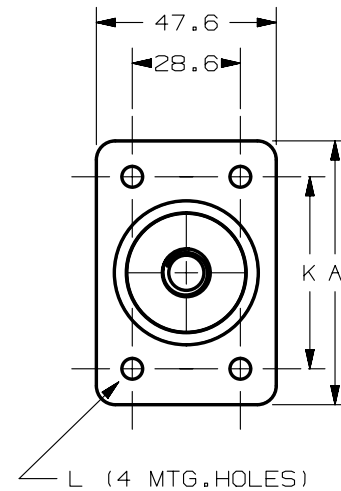
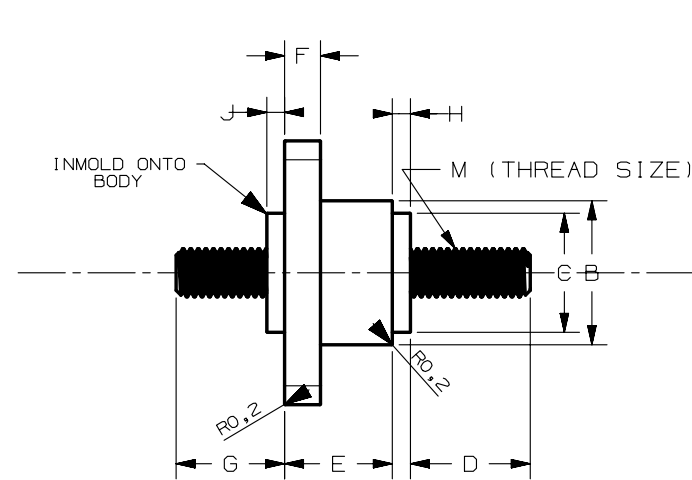
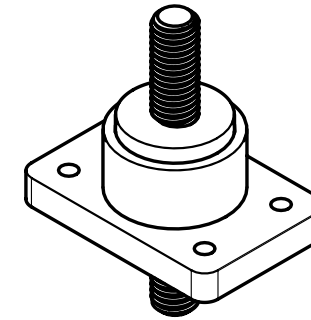


PART NO.	A	B	C	D	E	F	G	H	J	K	L	M	MAX. TORQUE (in-lb/N-m)	MAX. CURRENT RATING (AMPS)	COLOR
JBPT2P01ZXR	69.8 (2.75)	38.1 (1.50)	31.7 (1.25)	31.7 (1.25)	28.6 (1.13)	9.5 (0.37)	28.6 (1.13)	4.8 (0.19)	4.8±0.15 (0.19)	50.8 (2.00)	5.6(0.22) dia. hole w/ 11.2(0.44) dia. C'bore x 4.1(0.16) deep	1/2-13	300 (33.9)	400	RED
JBPT2N02ZXB	69.8 (2.75)	36.6 (1.44)	31.7 (1.25)	38.1 (1.50)	28.6 (1.13)	9.5 (0.37)	None	4.8 (0.19)	None	50.8 (2.00)	5.6(0.22) dia.	1/2-13	300 (33.9)	400	BLACK
JBPT2N03ZXB	69.8 (2.75)	36.3 (1.43)	31.7 (1.25)	38.1 (1.50)	28.6 (1.13)	9.5 (0.37)	None	4.8 (0.19)	None	50.8 (2.00)	5.6(0.22) dia.	5/16-18	75 (8.5)	200	BLACK



METRIC
ASSEMBLY

NOTES:

- ALL DIMENSIONS ARE FOR REFERENCE ONLY.
- MATERIAL :BODY-> THERMOPLASTIC,PA66
STUD-> STEEL ZN Plated
- MAXIMUM MOUNTING TORQUE 45 IN.LBS.(5 N-m).
- TEMPERATURE RATING: -40°C TO 125°C

UNLESS OTHERWISE SPECIFIED, DIMENSIONS ARE IN MILLIMETERS.
DIMENSIONS IN BRACKETS [] ARE INCHES

UNLESS OTHERWISE SPECIFIED, DIMENSIONS DO NOT INCLUDE PLATING.

⊙	DENOTES CRITICAL CHARACTERISTICS.
CPK	DENOTES CPK DIMENSIONS, -MINIMUM CPK VALUE
ST	DENOTES A CHARACTERISTIC THAT PROVIDES AN INDICATION OF PROCESS PERFORMANCE. PROCEDURE FOR MEASUREMENT AND TRACKING TO BE DEFINED IN LITTELFUSE INSPECTION INSTRUCTIONS
CP	DENOTES CP DIMENSIONS, -MINIMUM CP VALUE MUST BE WITHIN THE DIMENSIONAL LIMITATIONS SHOWN ON DRAWING AND INITIALLY LOCATED TO ALLOW FOR MAXIMUM TOOL LIFE

COPIES TO		LTR		DATE		REVISION		CHK	APD
1	9	A	5/2/11	502161	ERA-RELEASED	NR			
2	10	B	7/29/13	509321	ERA SYUD UNIFY ZPENG				
3	12								
4	13								
5	14								
6	15								
7	16								
8	17								
9	18								
10	19								
11	20								
12	21								
13	22								
14	23								
15	24								
16	25								
17	26								
18	27								
19	28								
20	29								
21	30								
22	31								
23	32								
24	33								
25	34								
26	35								
27	36								
28	37								
29	38								
30	39								
31	40								
32	41								
33	42								
34	43								
35	44								
36	45								
37	46								
38	47								
39	48								
40	49								
41	50								
42	51								
43	52								
44	53								
45	54								
46	55								
47	56								
48	57								
49	58								
50	59								
51	60								
52	61								
53	62								
54	63								
55	64								
56	65								
57	66								
58	67								
59	68								
60	69								
61	70								
62	71								
63	72								
64	73								
65	74								
66	75								
67	76								
68	77								
69	78								
70	79								
71	80								
72	81								
73	82								
74	83								
75	84								
76	85								
77	86								
78	87								
79	88								
80	89								
81	90								
82	91								
83	92								
84	93								
85	94								
86	95								
87	96								
88	97								
89	98								
90	99								
91	100								

MATL SPEC: SEE NOTES
FINISH: SEE NOTES
DRW N.ROQUE: 08/09/10
CHK: DATE
APPD: DATE
FINISH GOOD WT: GRAMS/PIECE
TOLERANCES UNLESS OTHERWISE SPECIFIED (REF. ISO 2768-FH)
DIMENSION: 0.5 - 3 UP TO OVER UP TO OVER UP TO OVER
TOLERANCE: +0.05 ±0.05 ±0.1 ±0.15 ±0.2
3RD ANGLE PROJECTION
TITLE: JUNCTION BLOCKS 1/2"-13 & 5/16"-13 (PASS-THRU & NON-PASS-THRU)
LITTLELUSE®
LIPA CITY, BATANGAS, PHILIPPINES
REVISION DRWG. NO. B OL-JBPT2
OUTLINE SERIES