

PART NO.	FIGURE	A	B	C	D	E	F	G	H	J	K	L	M	MAX. TORQUE (in-lb/N-m)	MAX. CURRENT RATING (AMPS)	WEIGHT	COLOR
JBPT3P01ZXB	1	52.4 (2.06)	23.8 (0.94)	17.5 (0.69)	22.2 (0.87)	17.5 (0.69)	7.9 (0.31)	23.8 (0.94)	1.6 (0.06)	1.6 (0.06)	33.3 (1.31)	5.6(0.22) dia. hole w/ 10.4(0.41) dia. C'bore x 3.6(0.14) deep	3/8-16	150 (17)	250	68.8g	BLACK
JBPT3P02ZXB	1	52.4 (2.06)	22.2 (0.87)	15.9 (0.63)	15.9 (0.63)	28.6 (1.13)	7.9 (0.31)	23.8 (0.94)	1.6±0.15 (0.06)	1.6±0.15 (0.06)	33.3 (1.31)	5.6(0.22) dia. hole w/ 10.4(0.41) dia. C'bore x 3.6(0.14) deep	3/8-16	150 (17)	250	80.5g	BLACK
JBPT3N03ZXB	2	54.0 (2.06)	24.9 (0.98)	15.9 (0.63)	22.2 (0.87)	17.5 (0.69)	7.9 (0.31)	None	1.6 (0.06)	None	34.9 (1.37)	5.6(0.22) dia. hole w/ 9.4(0.37) dia. C'bore x 3.6(0.14) deep	3/8-16	150 (17)	250	43.7g	BLACK
JBPT3N03ZXR	2	54.0 (2.06)	24.9 (0.98)	15.9 (0.63)	22.2 (0.87)	17.5 (0.69)	7.9 (0.31)	None	1.6 (0.06)	None	34.9 (1.37)	5.6(0.22) dia. hole w/ 9.4(0.37) dia. C'bore x 3.6(0.14) deep	3/8-16	150 (17)	250	43.7g	RED
JBPT3N04ZXB	2	54.0 (2.06)	24.9 (0.98)	15.9 (0.63)	22.2 (0.87)	17.5 (0.69)	7.9 (0.31)	None	1.6 (0.06)	None	34.9 (1.37)	5.6(0.22) dia. hole w/ 9.4(0.37) dia. C'bore x 3.6(0.14) deep	M8*1.25	150 (17)	250	43.7g	BLACK
JBPT3N04ZXR	2	54.0 (2.06)	24.9 (0.98)	15.9 (0.63)	22.2 (0.87)	17.5 (0.69)	7.9 (0.31)	None	1.6 (0.06)	None	34.9 (1.37)	5.6(0.22) dia. hole w/ 9.4(0.37) dia. C'bore x 3.6(0.14) deep	M8*1.25	150 (17)	250	43.7g	RED

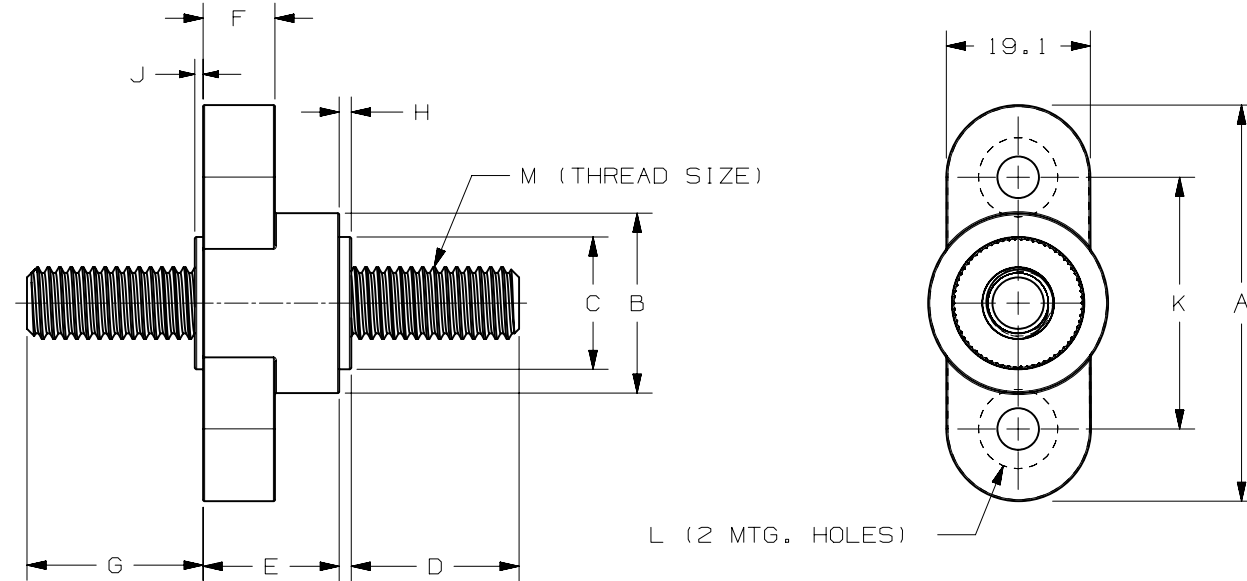


FIGURE 1

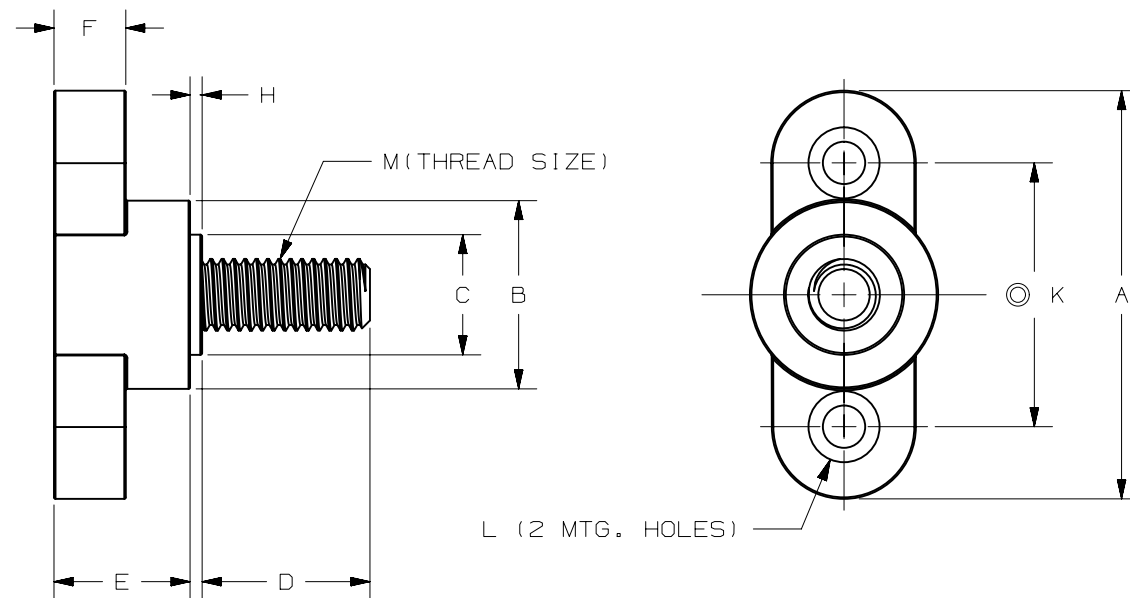


FIGURE 2

- NOTES:
1. ALL DIMENSIONS ARE FOR REFERENCE ONLY.
  2. MATERIAL: BODY-> THERMOPLASTIC, PA66  
STUD-> STEEL Zn Plated
  3. MAXIMUM MOUNTING TORQUE 45 IN.LBS (5 N-m).
  4. TEMPERATURE RATING: -40°C TO 125°C

UNLESS OTHERWISE SPECIFIED, DIMENSIONS ARE IN MILLIMETERS.  
DIMENSIONS IN BRACKETS [ ] ARE INCHES  
UNLESS OTHERWISE SPECIFIED, DIMENSIONS DO NOT INCLUDE PLATING.

⊙ DENOTES CRITICAL CHARACTERISTICS.  
CPK DENOTES CPK DIMENSIONS, -MINIMUM CPK VALUE  
ST DENOTES A CHARACTERISTIC THAT PROVIDES AN INDICATION OF PROCESS PERFORMANCE. PROCEDURE FOR MEASUREMENT AND TRACKING TO BE DEFINED IN LITTELFUSE INSPECTION INSTRUCTIONS  
CP DENOTES CP DIMENSIONS, -MINIMUM CP VALUE MUST BE WITHIN THE DIMENSIONAL LIMITATIONS SHOWN ON DRAWING AND INITIALLY LOCATED TO ALLOW FOR MAXIMUM TOOL LIFE

METRIC ASSEMBLY

COPIES TO		MATERIAL SPEC		FINISH		SCALE		DATE		N.ROQUE		CHK		APPD		GRAMS/PIECE		TOLERANCES UNLESS OTHERWISE SPECIFIED (REF. ISO 2768-PH)	
LTR	DATE	REVISION	CHK	APD	DATE	DATE	DATE	DATE	DATE	DATE	DATE	DATE	DATE	DATE	DATE	DATE	DATE	DATE	DATE
A	5/2/11	502161ERA-RELEASED	NR																
B	7/29/13	509155 ERA ADD NEW SALES PARTS: JBPT3N04ZXB & JBPT3N04ZXR; STUD UNIFY;																	
C	5/14/15	514287ECA-ADD FIGURE OF FYUE																	

REVISION DRWG. NO. OL-JBPT3  
LITTELFUSE  
LIPA CITY, BATANGAS, PHILIPPINES

JUNCTION BLOCKS 3/8"-16  
(PASS-THRU & NON-PASS-THRU)