

PART NUMBER

OLD4553ZX

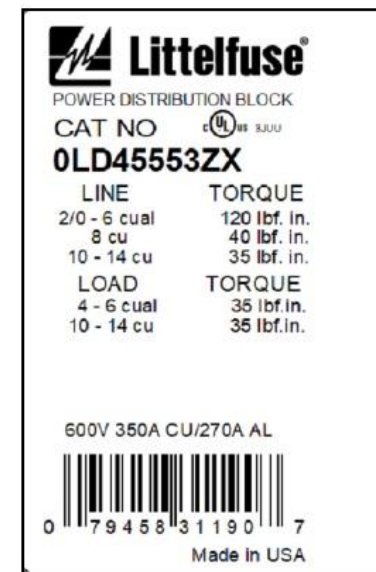
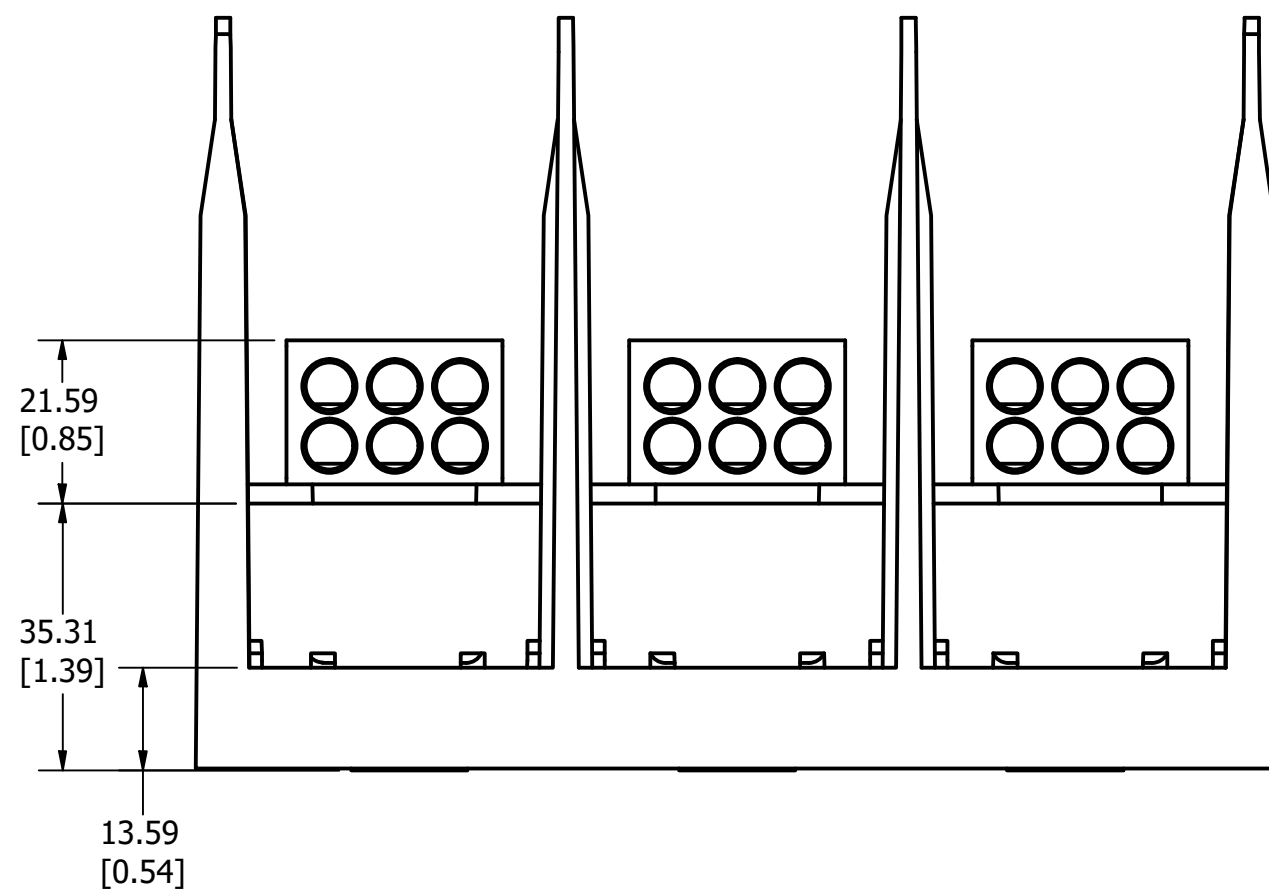
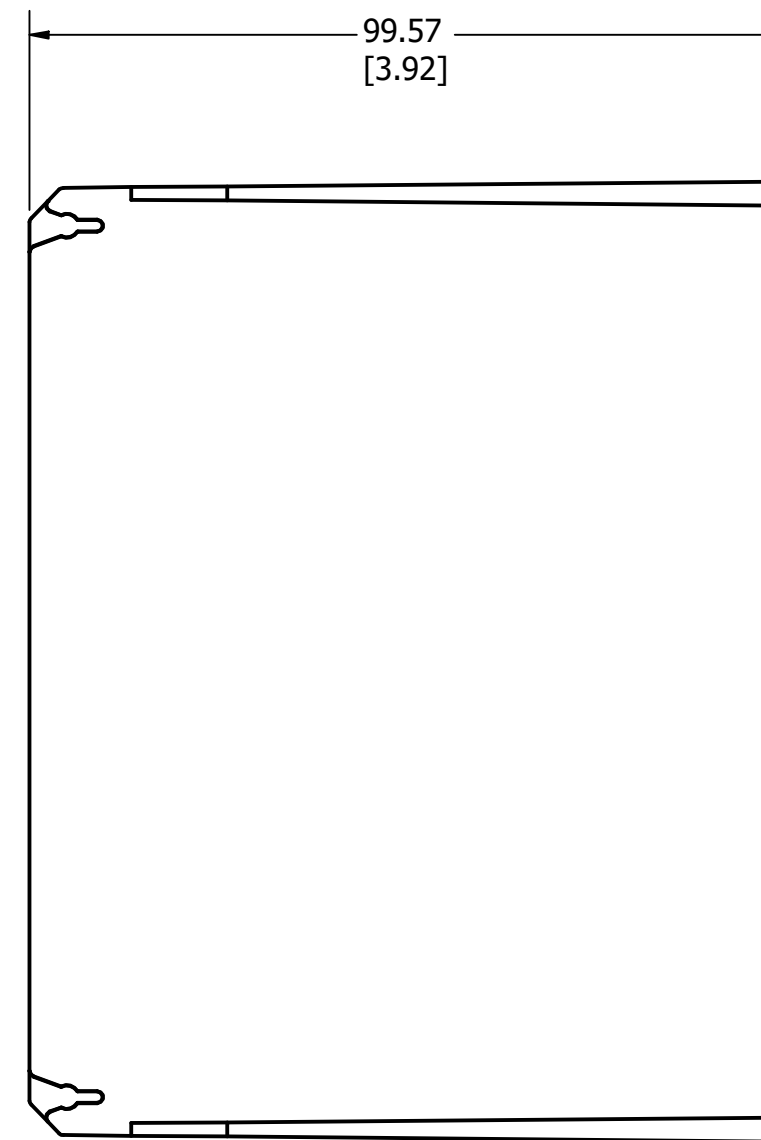
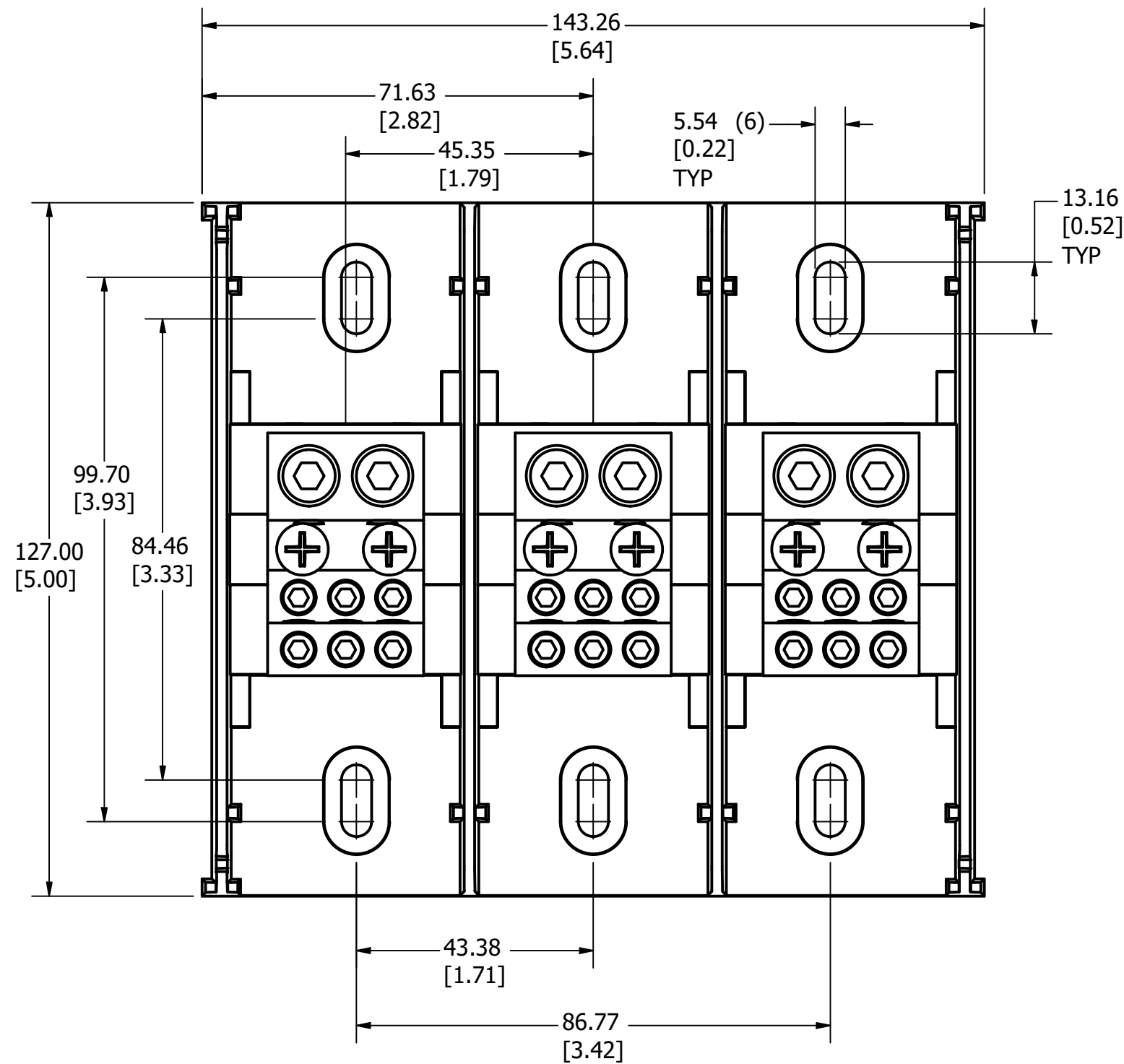
| REVISION |         | DESCRIPTION                        |
|----------|---------|------------------------------------|
| REV      | DATE    |                                    |
| A        | 3/11/24 | 527585GCP - RELEASE PER EM3406 MRY |

NOTES:

1. AGENCY INFORMATION: cULus - UL LISTED TO UL 1953  
UL EVALUATED TO CSA 22.2 NO. 158
2. MATERIALS: INSULATOR BASE: HIGH IMPACT THERMOPLASTIC  
FLAMMABILITY RATING UL94V0  
TEMP RATING: -40°C TO 125°C (UL RTI)  
CONNECTOR: ALUMINUM, TIN PLATED  
LINE TERMINAL SCREWS: ALUMINUM, TIN PLATED  
LOAD TERMINAL SCREWS: ALUMINUM, NICKEL PLATED  
CONNECTOR MOUNTING SCREWS: STEEL, ZINC PLATED
3. TERMINATION: LINE: COPPER STRANDED, 2/0 - #14 AWG  
SOLID COPPER, #10 - 14 AWG  
ALUMINUM, #2 - 6 AWG  
LOAD: COPPER STRANDED, #4 - 14 AWG  
SOLID COPPER, #10 - 14 AWG  
ALUMINUM, #2 - 6 AWG
4. MAXIMUM AMP RATING PER POLE: 350A  
BASED ON NEC WIRE RATING CODE, 75°C WIRE  
PROVIDES SPACING FOR USE IN FEEDER CIRCUITS  
AT 251-600V PER UL508A
5. TORQUE: LINE: 2/0 - #6: 13.6 N-m (120 lbf-in)  
#8: 4.5 N-m (40 lbf-in)  
#10 - 14: 4 N-m (35 lbf-in)  
LOAD: #4 - 14: 4 N-m (35 lbf-in)
6. MOUNTING: USE #10 FASTENER. TORQUE NOT TO EXCEED  
3.4 N-m (30 lbf-in).

TOLERANCE (UNLESS OTHERWISE SPECIFIED):

- 1 PLACE ± 2.5mm [0.10]
- 2 PLACE ± 0.76mm [0.03]
- 3 PLACE ± 0.381mm [0.015]



| CLASS | LINE   | LOAD | Over-Current Protection Fuse Required Class / Max Amp Rating |     |     |     |    |    | SCCR RMS Sym. Amps 600V Max |
|-------|--------|------|--|-----|-----|-----|----|----|-----------------------------|
|       |        |      | J  | T   | RK1 | RK5 | G  | CC |                             |
| B-C   | 2/0-2  | 4-8  | 400  | 400 | 400 | 100 | 80 | 30 | 100,000                     |
|       | 2/0-6  | 4-10 | 200  | 200 | 200 | 100 | 80 | 30 | 100,000                     |
| G,H   | 1-6    | 8-10 | 150  | 150 | 100 | 100 | 80 | 30 | 100,000                     |
|       | 2/0-14 | 4-14 | None   |     |     |     |    |    | 10,000                      |

| NO  | COMPONENT NO  | DESCRIPTION  | QTY/M                      | U/M          |
|---|---------------|--|----------------------------|--------------|
| <b>BILL OF MATERIAL</b>   |               |  |                            |              |
| <S>   |               | CRITICAL CHARACTERISTIC FOR PART SAFETY/COMPLIANCE   |                            |              |
| ●   |               | DENOTES CRITICAL CHARACTERISTICS.  |                            |              |
| CPK   |               | DENOTES CPK DIMENSIONS, -MINIMUM CPK VALUE   |                            |              |
| (ST)  |               | DENOTES A CHARACTERISTIC THAT PROVIDES AN INDICATION OF PROCESS PERFORMANCE. PROCEDURE FOR MEASUREMENT AND TRACKING TO BE DEFINED IN LITTELFUSE INSPECTION INSTRUCTIONS. |                            |              |
| CP  |               | DENOTES CP DIMENSIONS, -MINIMUM CP VALUE MUST BE WITHIN THE DIMENSIONAL LIMITATIONS SHOWN ON DRAWING AND INITIALLY LOCATED TO ALLOW FOR MAXIMUM TOOL LIFE.               |                            | <b>C</b>     |
| MATL SPEC   |               | FINISH   |                            |              |
| DRW myork   | DATE 3/2/2023 | SCALE NTS  | FINISH GOOD WT GRAMS/PIECE |              |
| UNLESS OTHERWISE SPECIFIED, DIMENSIONS ARE IN MILLIMETERS, DIMENSIONS IN BRACKETS [ ] ARE INCHES DIMENSIONING AND DO NOT INCLUDE PLATING. TOLERANCING TO BE INTERPRETED IN ACCORDANCE WITH ANSI Y14.5M-1994 |               |  |                            |              |
| 3RD ANGLE PROJECTION  |               |  |                            |              |
| <b>TITLE</b> DISTRIBUTION BLOCK 600V, 350A, 3 POLE OUTLINE  |               |  |                            |              |
| <b>Littelfuse</b><br>CHICAGO, ILLINOIS 60631  |               | REVISION A   | DRWG NO. OL-LD4553         | SHEET 1 OF 1 |