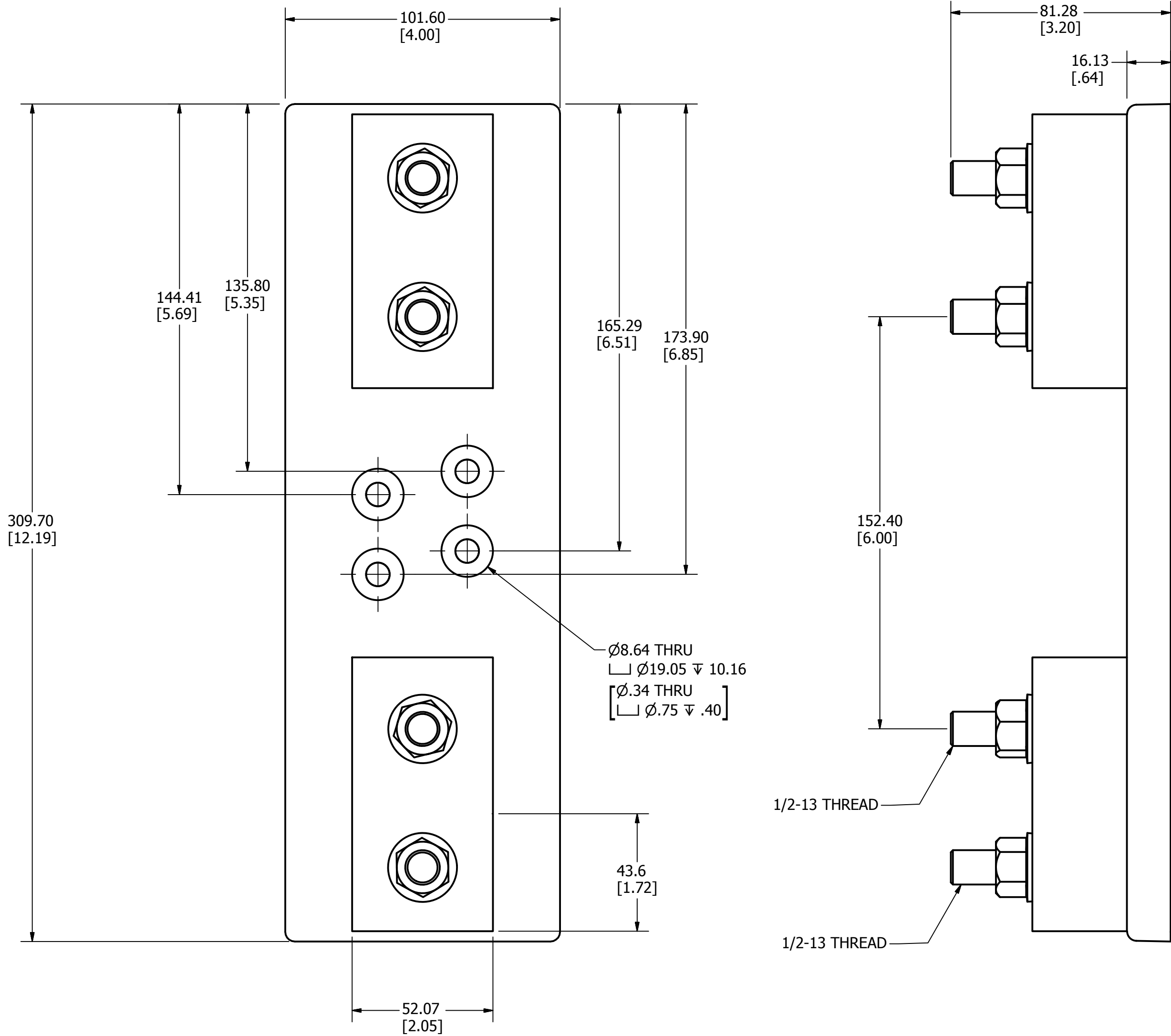


| REVISION | | |
|----------|------------|--|
| REV | DATE | DESCRIPTION |
| A | 8/23/2011 | 503105ERP - RELEASE MRY |
| B | 7/18/2012 | 505447ECP/C-CHG - REPLACE BASE WITH CURRENT DESIGN -TV |
| C | 12/20/2012 | 507000ECP - ADD DIMS AND THREAD CALLOUT -TV |



SPECIFICATIONS:

VOLTAGE RATING: 1000VDC

AMPERE RATING: 450 AMPERES



INTERRUPT RATING: 20kA

TERMINAL TYPE: STUD

TERMINAL TORQUE: 33.9 N-m (300 in-lb)

FUSE TORQUE: 33.9 N-m (300 in-lb)

APPROVALS: UL LISTED (UL 4248-18)

| | | | |
|---|--|--------------|----------------------------|
| ● | DENOTES CRITICAL CHARACTERISTICS. | | |
| CPK | DENOTES CPK DIMENSIONS, -MINIMUM CPK VALUE | | |
| (ST) | DENOTES A CHARACTERISTIC THAT PROVIDES AN INDICATION OF PROCESS PERFORMANCE. PROCEDURE FOR MEASUREMENT AND TRACKING TO BE DEFINED IN LITTELFUSE INSPECTION INSTRUCTIONS. | | |
| CP | DENOTES CP DIMENSIONS, -MINIMUM CP VALUE MUST BE WITHIN THE DIMENSIONAL LIMITATIONS SHOWN ON DRAWING AND INITIALLY LOCATED TO ALLOW FOR MAXIMUM TOOL LIFE. | | |
| MATL SPEC | | FINISH | |
| DRW TVESELSK | DATE 8/23/2011 | SCALE NTS | FINISH GOOD WT GRAMS/PIECE |
| UNLESS OTHERWISE SPECIFIED, DIMENSIONS ARE IN MILLIMETERS, DIMENSIONS IN BRACKETS [] ARE INCHES DIMENSIONING AND DO NOT INCLUDE PLATING. TOLERANCING TO BE INTERPRETED IN ACCORDANCE WITH ANSI Y14.5M-1994 | | | |
| 3RD ANGLE PROJECTION | | | |
|  | | | |
| TITLE LFJ104501STST OUTLINE | | | |
|  Littelfuse® CHICAGO, ILLINOIS 60631 | | REVISION C | DRWG NO. OL-LFJ104501STST |
| | | SHEET 1 OF 1 | |