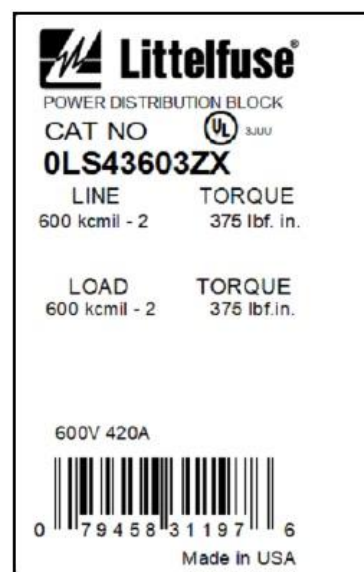
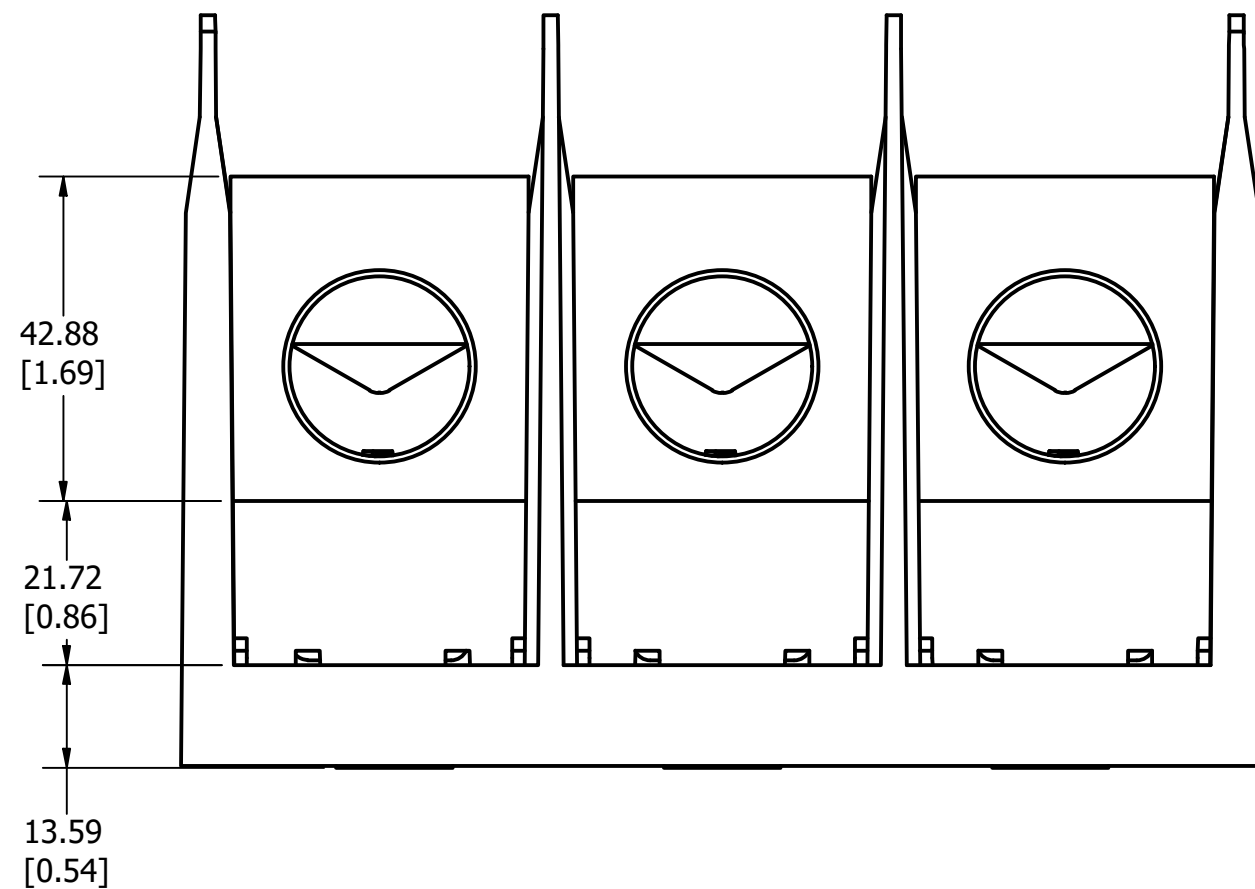
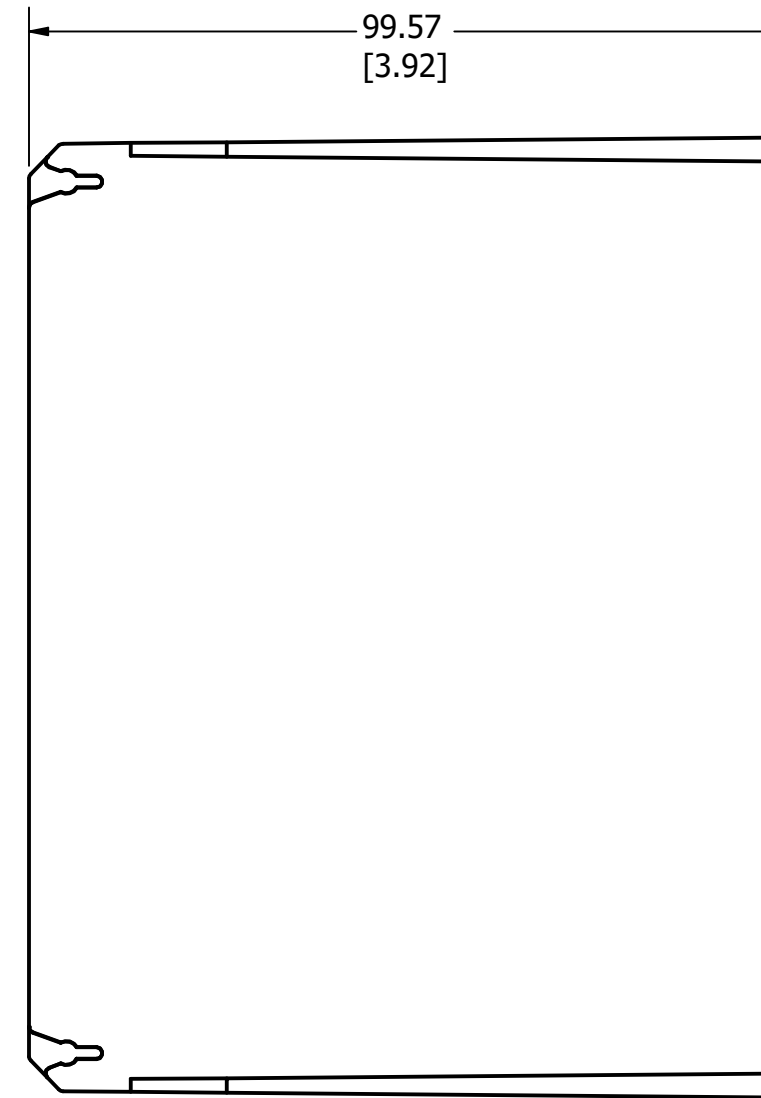
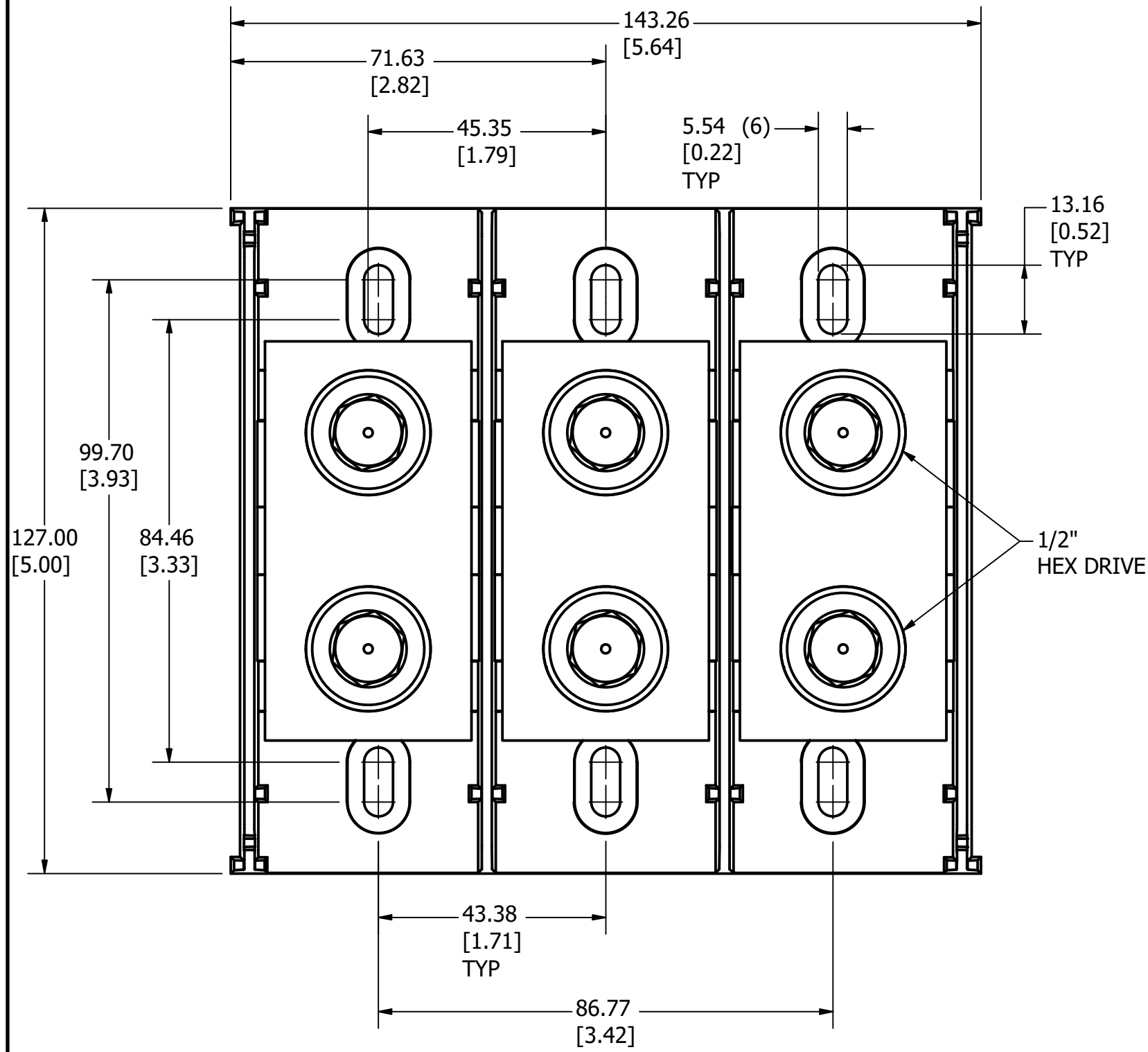


PART NUMBER

OLS43603ZX

REVISION

REV	DATE	DESCRIPTION
A	3/11/24	527585GCP - RELEASE PER EM3406 MRY



Suitable Wire, CU kcmil/AWG		Over-Current Protection Fuse Required Class / Max Amp Rating				SCCR RMS Sym. Amps 600V Max			
CLASS	LINE	LOAD	J	T	RK1	RK5	G	CC	
B-C	600 - 2	600 - 2	500	500	400	200	60	30	100,000
G, H, I	350 - 2	350 - 2	450	450	400	200	60	30	100,000
	600 - 2	600 - 2	None						10,000

NOTES:

- AGENCY INFORMATION: UL LISTED TO UL 1953
- MATERIALS: INSULATOR BASE: HIGH IMPACT THERMOPLASTIC
FLAMMABILITY RATING UL94V0
TEMP RATING: -40°C TO 125°C (UL RTI)
CONNECTOR: ALUMINUM, TIN PLATED
TERMINAL SCREWS: ALUMINUM, TIN PLATED
CONNECTOR MOUNTING SCREWS: STEEL, ZINC PLATED
- TERMINATION: LINE: COPPER STRANDED & ALUMINUM, 600 KCMIL - #2 AWG
LINE: COPPER STRANDED & ALUMINUM, 600 KCMIL - #2 AWG
- MAXIMUM AMP RATING PER POLE: 420A
BASED ON NEC WIRE RATING CODE, 75°C WIRE
PROVIDES SPACING FOR USE IN FEEDER CIRCUITS
AT 251-600V PER UL508A
- TORQUE: LINE: 600 KCMIL - #2: 42.4 N-m (375 lbf-in)
LOAD: 600 KCMIL - #2: 42.4 N-m (375 lbf-in)
- MOUNTING: USE #10 FASTENER. TORQUE NOT TO EXCEED
3.4 N-m (30 lbf-in).

TOLERANCE (UNLESS OTHERWISE SPECIFIED):

- PLACE ± 2.5mm [0.10]
- PLACE ± 0.76mm [0.03]
- PLACE ± 0.381mm [0.015]

NO	COMPONENT NO	DESCRIPTION	QTY/M	U/M					
BILL OF MATERIAL									
<S>		CRITICAL CHARACTERISTIC FOR PART SAFETY/COMPLIANCE							
●		DENOTES CRITICAL CHARACTERISTICS.							
CPK		DENOTES CPK DIMENSIONS, -MINIMUM CPK VALUE							
(ST)		DENOTES A CHARACTERISTIC THAT PROVIDES AN INDICATION OF PROCESS PERFORMANCE. PROCEDURE FOR MEASUREMENT AND TRACKING TO BE DEFINED IN LITTELFUSE INSPECTION INSTRUCTIONS.							
CP		DENOTES CP DIMENSIONS, -MINIMUM CP VALUE. MUST BE WITHIN THE DIMENSIONAL LIMITATIONS SHOWN ON DRAWING AND INITIALLY LOCATED TO ALLOW FOR MAXIMUM TOOL LIFE.		C					
MATL SPEC		FINISH							
DRW	myork	DATE	3/7/2023	SCALE	NTS	FINISH GOOD WT		GRAMS/PIECE	
UNLESS OTHERWISE SPECIFIED, DIMENSIONS ARE IN MILLIMETERS, DIMENSIONS IN BRACKETS [] ARE INCHES DIMENSIONING AND DO NOT INCLUDE PLATING. TOLERANCING TO BE INTERPRETED IN ACCORDANCE WITH ANSI Y14.5M-1994									
3RD ANGLE PROJECTION									
TITLE SPLICER BLOCK 600V, 420A, 3 POLE OUTLINE									
Littelfuse CHICAGO, ILLINOIS 60631		REVISION	A	DRWG NO.	OL-LS43603	SHEET 1 OF 1			