

| REVISION | | |
|----------|---------|---------------------------------------|
| REV | DATE | DESCRIPTION |
| A | 5/17/16 | 515753GCP - RELEASE PER EM2797 MRY |
| B | 9/2/21 | 523764ECP/C - UPDATE TORQUE NOTES MRY |

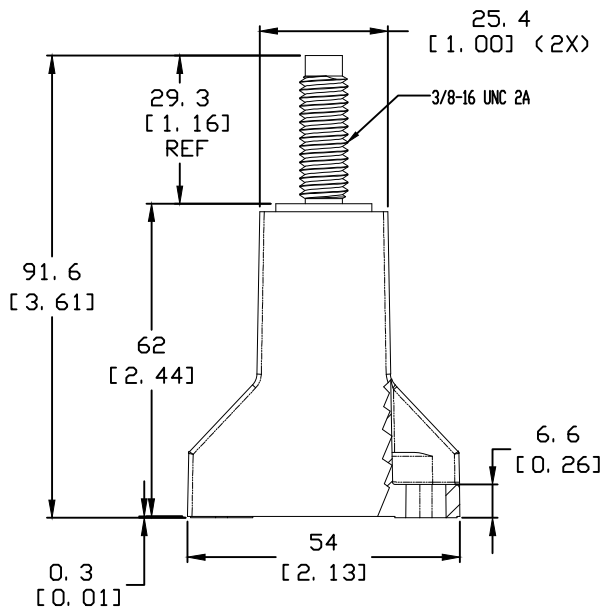
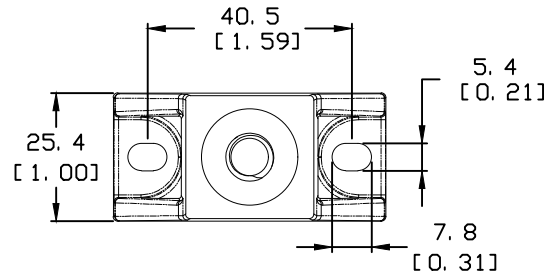
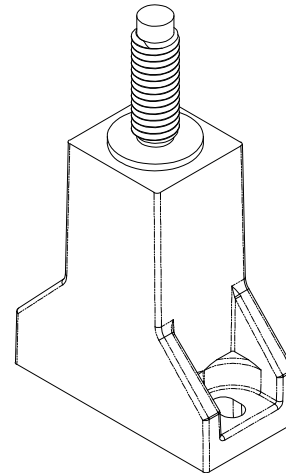
NOTES:

- AGENCY INFORMATION:
UL FILE NO. E14721
- COMPLETE ASSEMBLY INCLUDES:
(1) BASE W/ INSERT MOLDED STUD
(1) STEEL NUT (BAGGED SEPARATELY)
(1) STEEL BELLEVILLE WASHER (BAGGED SEPARATELY)
- MATERIAL: INSULATION: 35-45% GLASS/MINERAL REINFORCED THERMOPLASTIC
FLAMMABILITY RATING: V-0 PER UL94
TEMPERATURE RATING 125°C (257°F) MIN.

HARDWARE (STUD, NUT & WASHER): STEEL, ZINC PLATED
- APPLICATION TORQUE: 230 IN LB ± 10%
PANEL MOUNTING: #10 FASTENER, 12 IN-LB (1.3 N-m) MAX

TOLERANCE (UNLESS OTHERWISE SPECIFIED):

- PLACE ± 2.5mm [0.1]
- PLACE ± 0.76mm [0.03]
- PLACE ± 0.381mm [0.015]



| | | | |
|---|--|------------|----------------------------------|
| ● | DENOTES CRITICAL CHARACTERISTICS. | | |
| CPK | DENOTES CPK DIMENSIONS, -MINIMUM CPK VALUE | | |
| (ST) | DENOTES A CHARACTERISTIC THAT PROVIDES AN INDICATION OF PROCESS PERFORMANCE. PROCEDURE FOR MEASUREMENT AND TRACKING TO BE DEFINED IN LITTELFUSE INSPECTION INSTRUCTIONS. | | |
| CP | DENOTES CP DIMENSIONS, -MINIMUM CP VALUE MUST BE WITHIN THE DIMENSIONAL LIMITATIONS SHOWN ON DRAWING AND INITIALLY LOCATED TO ALLOW FOR MAXIMUM TOOL LIFE. B | | |
| MATL SPEC | | FINISH | |
| DRW myork | DATE 9/2/2015 | SCALE NTS | FINISH GOOD WT GRAMS/PIECE |
| UNLESS OTHERWISE SPECIFIED, DIMENSIONS ARE IN MILLIMETERS, DIMENSIONS IN BRACKETS [] ARE INCHES DIMENSIONING AND DO NOT INCLUDE PLATING. TOLERANCING TO BE INTERPRETED IN ACCORDANCE WITH ANSI Y14.5M-1994 | | | |
| 3RD ANGLE PROJECTION | | | |
| TITLE 1000V 800A FUSE HOLDER OUTLINE | | | |
| CHICAGO, ILLINOIS 60631 | | REVISION B | DRWG NO. OL-LSCR102 SHEET 1 OF 1 |