

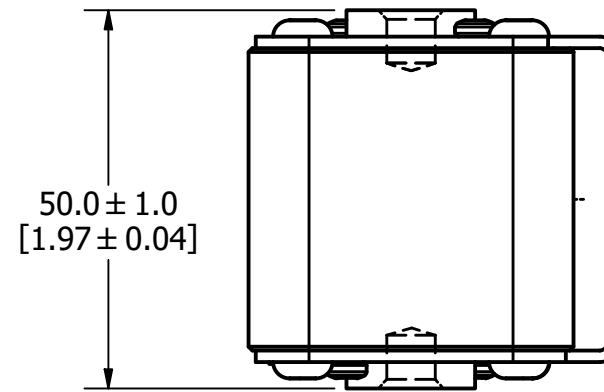
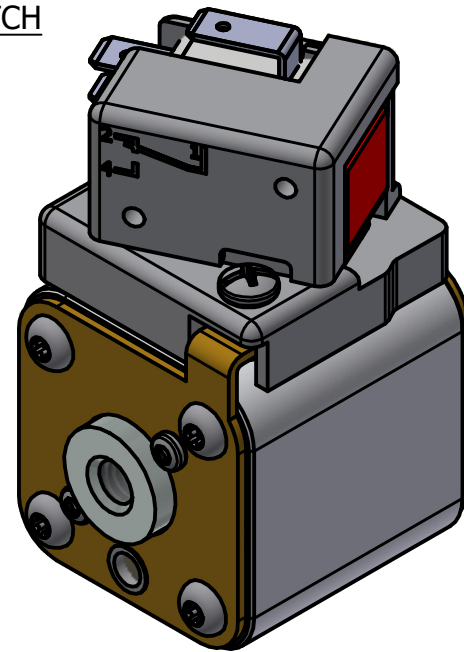
MOUNTING SPECS:

STUD SIZE: 5/16-18 UNC-2B ∇ 6.0[0.24]

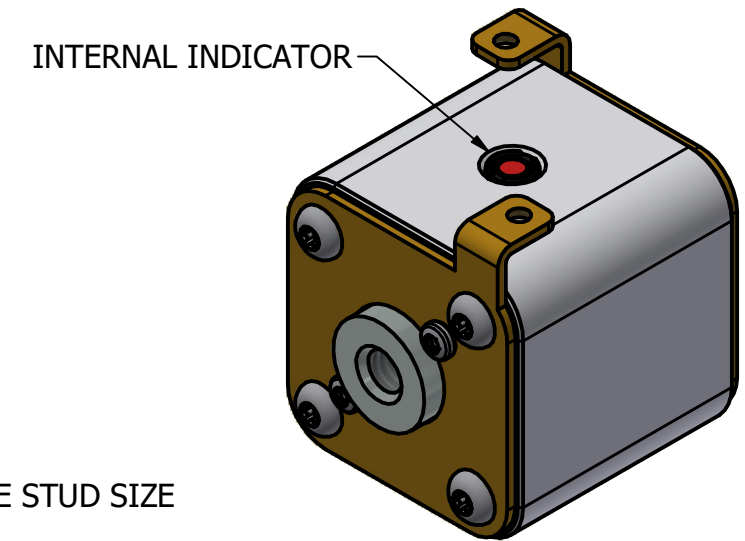
STUD TORQUE: 13-20Nm

| REVISION | | |
|----------|------------|---|
| REV | DATE | DESCRIPTION |
| A | 03/16/2017 | 517373GCP - RELEASED -TV |
| B | 10/19/2017 | 518344ECP - REVISE MOUNTING SPEC NOTES -TV |
| C | 8/30/18 | 519782ECP/D - CHG STUD TORQUE MRY |
| D | 5/5/22 | 525159ECP/D - CHANGE HEIGHT, ADD TOLERANCES MRY |
| E | 5/19/22 | 525232ECP/D - UPDATE LENGTH DIMENSION MRY |
| F | 7/14/22 | 525433ECP/D - CHANGE HEIGHT DIMENSION FORMAT MRY |
| G | 1/22/24 | 526835ECP/D - ADDED VIEW WITHOUT MICRO-SWITCH JTM |

FUSE WITH MICRO-SWITCH

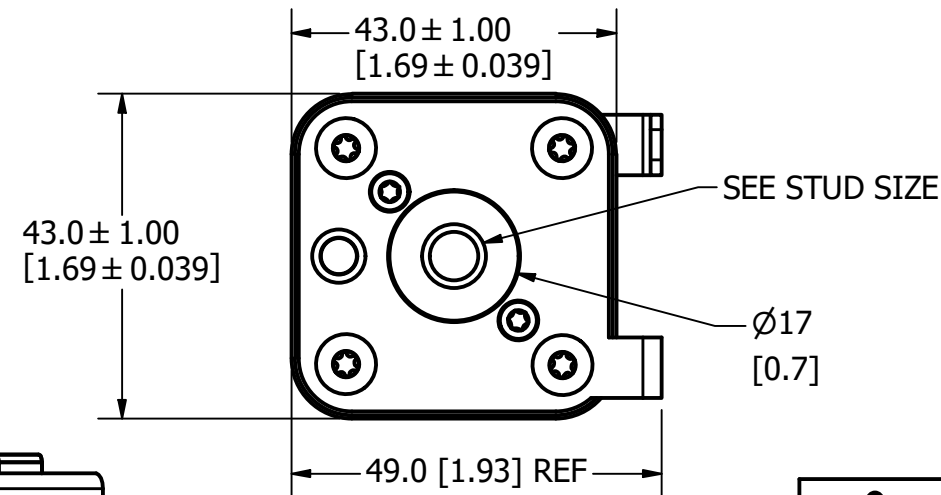
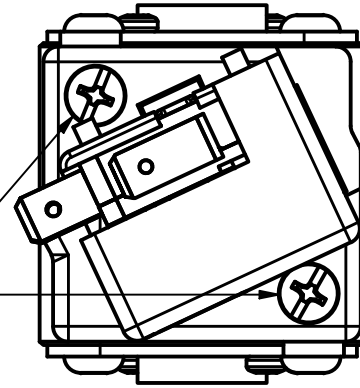


FUSE



INTERNAL INDICATOR

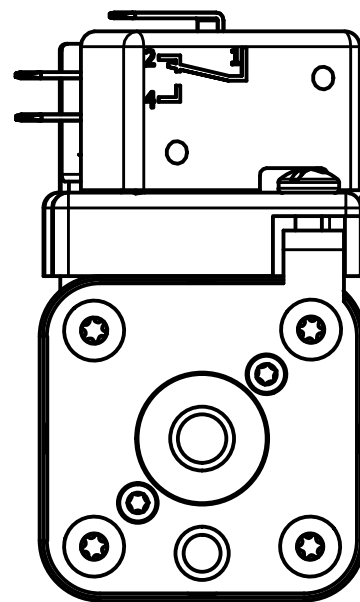
M4x0.7 THREAD
10.00[.394]
STUD LENGTH



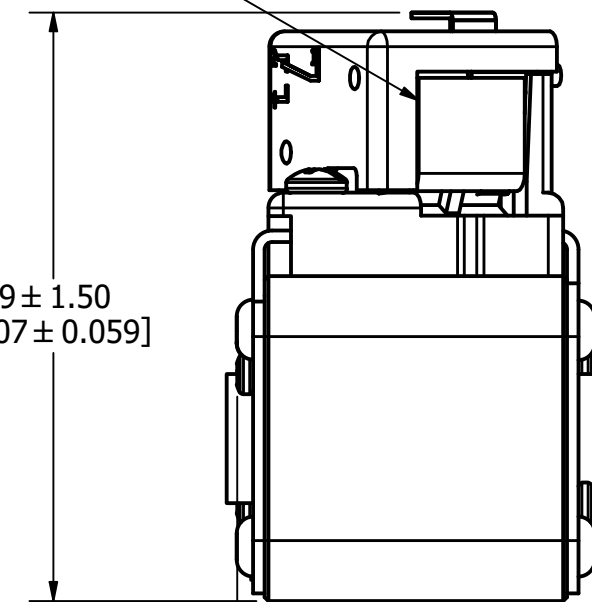
SEE STUD SIZE

Ø17
[0.7]

VISUAL INDICATOR



77.9 ± 1.50
[3.07 ± 0.059]



FUSE WITH MICRO-SWITCH

| | |
|-----|--|
| ● | DENOTES CRITICAL CHARACTERISTICS. |
| CPK | DENOTES CPK DIMENSIONS, -MINIMUM CPK VALUE |
| ⊠ | DENOTES A CHARACTERISTIC THAT PROVIDES AN INDICATION OF PROCESS PERFORMANCE. PROCEDURE FOR MEASUREMENT AND TRACKING TO BE DEFINED IN LITTELFUSE INSPECTION INSTRUCTIONS. |
| CP | DENOTES CP DIMENSIONS, -MINIMUM CP VALUE MUST BE WITHIN THE DIMENSIONAL LIMITATIONS SHOWN ON DRAWING AND INITIALLY LOCATED TO ALLOW FOR MAXIMUM TOOL LIFE. |

B

| | | | |
|-----------------|--------------------|--------------|-------------------------------|
| MATL SPEC | | FINISH | |
| DRW TVESELSK | DATE 12/31/1969 | SCALE NTS | FINISH GOOD WT GRAMS/PIECE |

UNLESS OTHERWISE SPECIFIED, DIMENSIONS ARE IN MILLIMETERS, DIMENSIONS IN BRACKETS [] ARE INCHES DIMENSIONING AND DO NOT INCLUDE PLATING. TOLERANCING TO BE INTERPRETED IN ACCORDANCE WITH ANSI Y14.5M-1994

| | |
|----------------------|--|
| 3RD ANGLE PROJECTION | |
|----------------------|--|

TITLE SQUARE BODY 30 CASE SIZE - ENGLISH THREAD OUTLINE

| | | | |
|--|----------------------|------------------------------------|--------------|
| Littelfuse CHICAGO, ILLINOIS 60631 | REVISION G | DRWG NO. OL-PSR030FS0000 | SHEET 1 OF 1 |
|--|----------------------|------------------------------------|--------------|

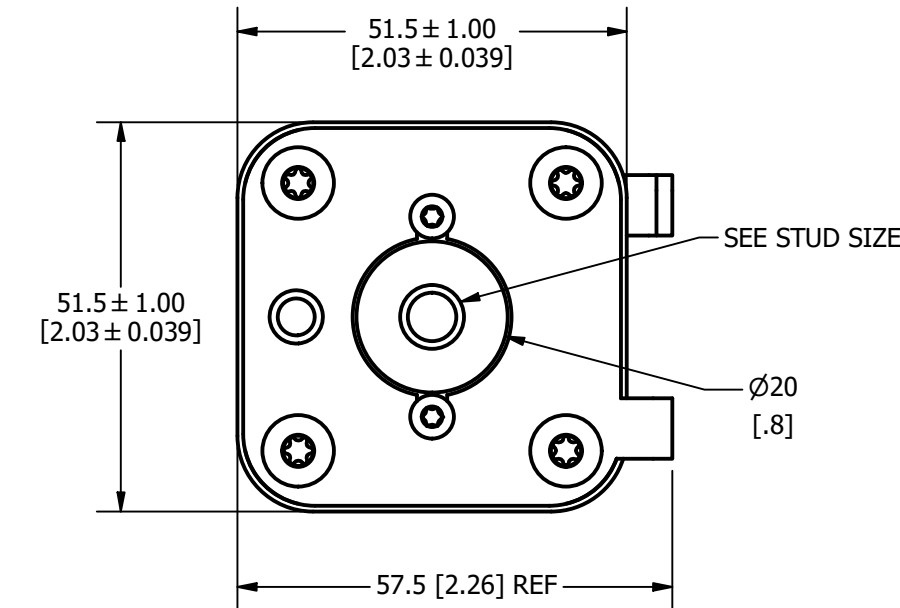
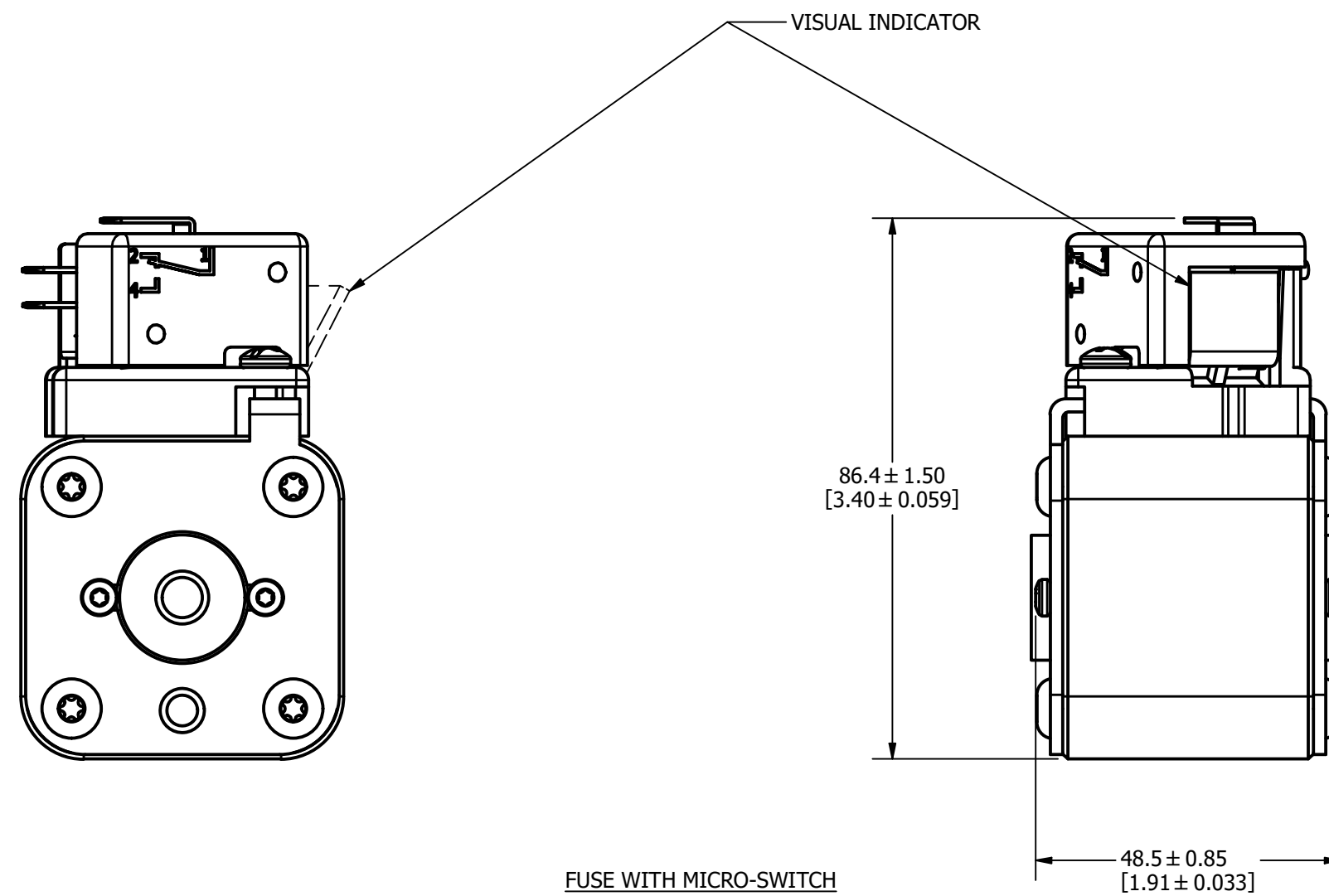
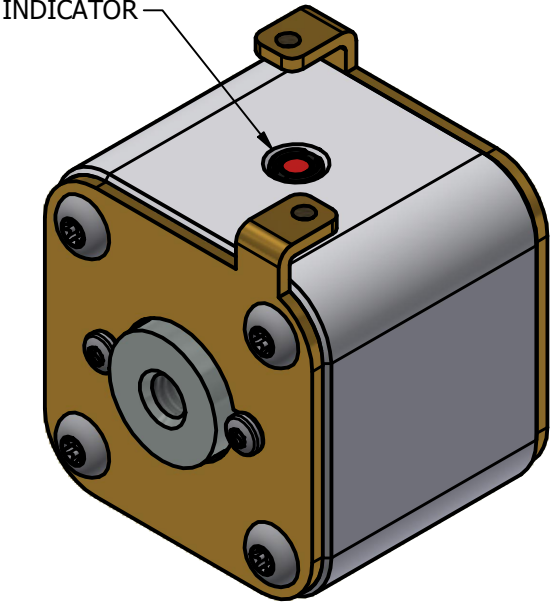
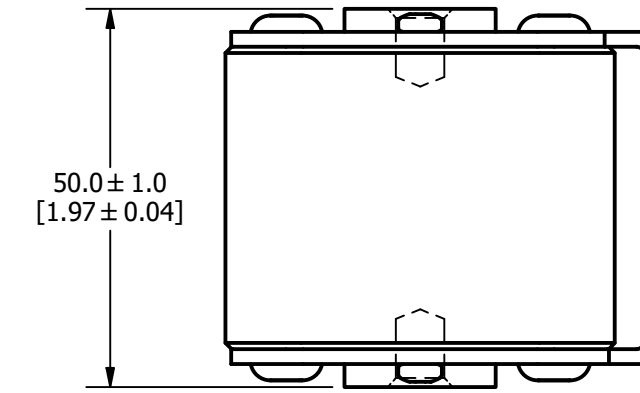
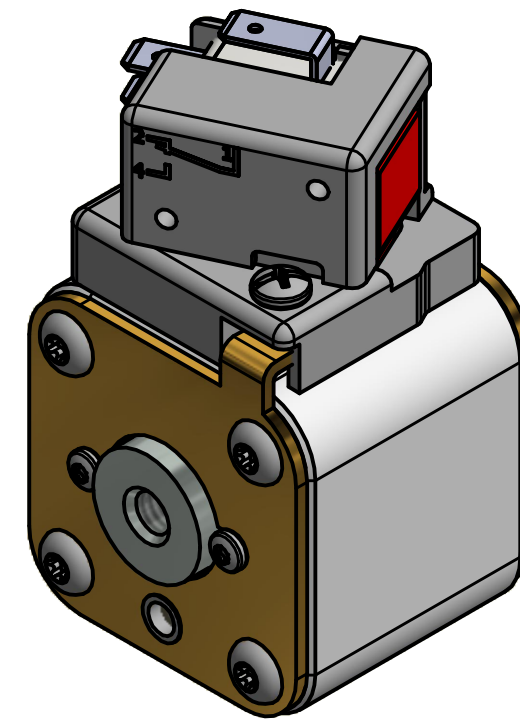
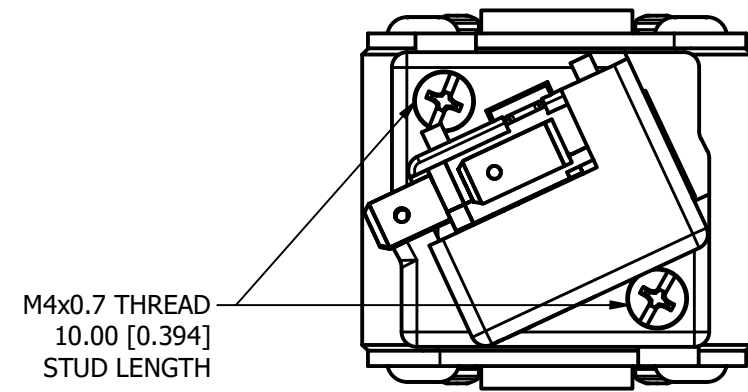
MOUNTING SPECS:
 STUD SIZE: 5/16-18 UNC-2B ∇ 8.0[0.31]
 STUD TORQUE: 13-20Nm

| REVISION | | |
|----------|------------|---|
| REV | DATE | DESCRIPTION |
| A | 08/11/2017 | 518016GCP - RELEASED -TV |
| B | 10/19/2017 | 518344ECP - REVISE MOUNTING SPEC NOTES -TV |
| C | 8/30/18 | 519782ECP/D - CHG STUD TORQUE MRY |
| D | 5/5/22 | 525159ECP/D - CHANGE HEIGHT, ADD TOLERANCES MRY |
| E | 5/19/22 | 525232ECP/D - UPDATE LENGTH DIMENSION MRY |
| F | 7/14/22 | 525433ECP/D - CHANGE HEIGHT DIMENSION FORMAT MRY |
| G | 1/12/24 | 526835ECP/D - ADDED VIEW WITHOUT MICRO-SWITCH JTM |

FUSE

FUSE WITH MICRO-SWITCH

INTERNAL INDICATOR

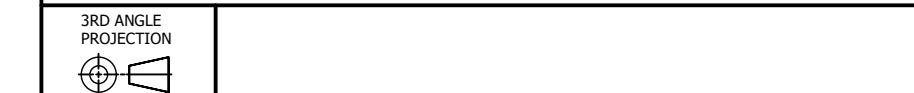


FUSE WITH MICRO-SWITCH

| | |
|------|--|
| ● | DENOTES CRITICAL CHARACTERISTICS. |
| CPK | DENOTES CPK DIMENSIONS, -MINIMUM CPK VALUE |
| (ST) | DENOTES A CHARACTERISTIC THAT PROVIDES AN INDICATION OF PROCESS PERFORMANCE. PROCEDURE FOR MEASUREMENT AND TRACKING TO BE DEFINED IN LITTELFUSE INSPECTION INSTRUCTIONS. |
| CP | DENOTES CP DIMENSIONS, -MINIMUM CP VALUE MUST BE WITHIN THE DIMENSIONAL LIMITATIONS SHOWN ON DRAWING AND INITIALLY LOCATED TO ALLOW FOR MAXIMUM TOOL LIFE. |

| MATL SPEC | FINISH |
|--------------|----------------------------|
| DRW TVESELSK | DATE 1/12/2024 |
| SCALE NTS | FINISH GOOD WT GRAMS/PIECE |

UNLESS OTHERWISE SPECIFIED, DIMENSIONS ARE IN MILLIMETERS, DIMENSIONS IN BRACKETS [] ARE INCHES DIMENSIONING AND DO NOT INCLUDE PLATING. TOLERANCING TO BE INTERPRETED IN ACCORDANCE WITH ANSI Y14.5M-1994

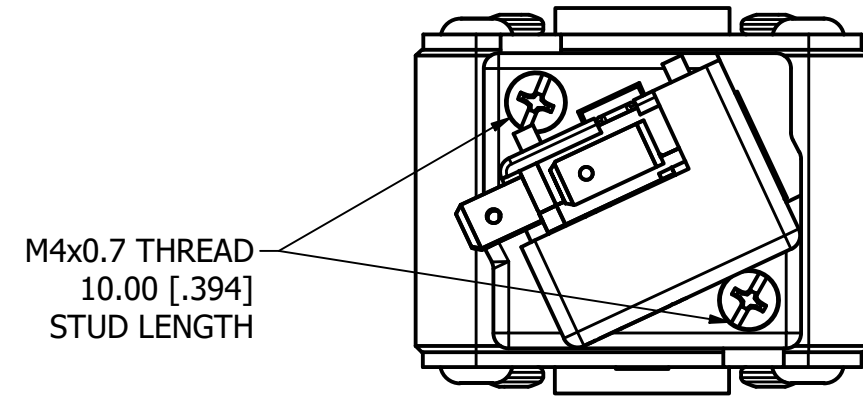


TITLE SQUARE BODY 31 CASE SIZE - ENGLISH THREAD OUTLINE

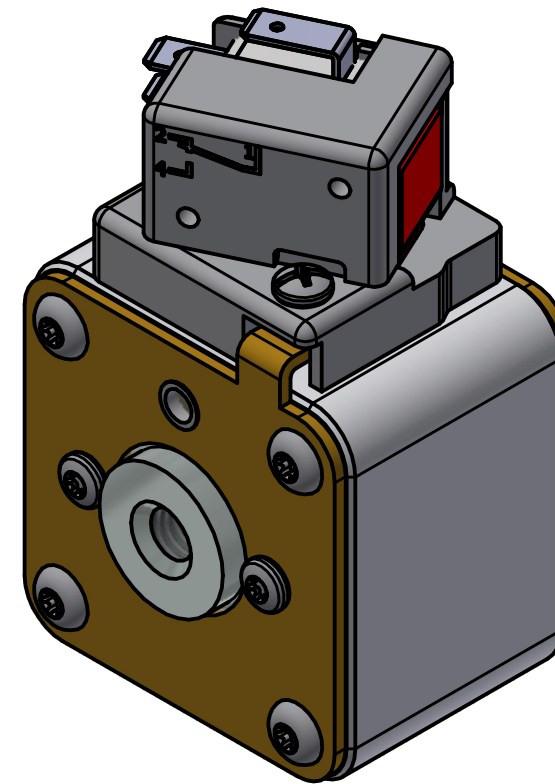
| REVISION | | |
|----------|------------|---|
| REV | DATE | DESCRIPTION |
| A | 03/16/2016 | 518344GCP - RELEASED -TV |
| B | 10/19/2017 | 518344ECP - REVISE MOUNTING SPEC NOTES -TV |
| C | 8/30/18 | 519782ECP/D - CHG STUD TORQUE MRY |
| D | 5/5/22 | 525159ECP/D - CHANGE HEIGHT, ADD TOLERANCES MRY |
| E | 5/19/22 | 525232ECP/D - UPDATE LENGTH DIMENSION MRY |
| F | 7/14/22 | 525433ECP/D - CHANGE HEIGHT DIMENSION FORMAT MRY |
| G | 1-12-24 | 526835ECP/D - ADDED VIEW WITHOUT MICRO-SWITCH JTM |

MOUNTING SPECS:
 STUD SIZE: 3/8-16 UNC-2B ∇ 11.5 [0.45]
 STUD TORQUE: 26-35Nm

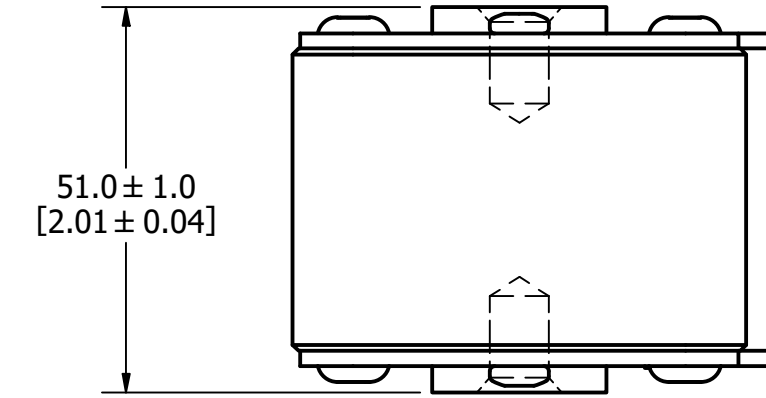
FUSE WITH MICRO-SWITCH



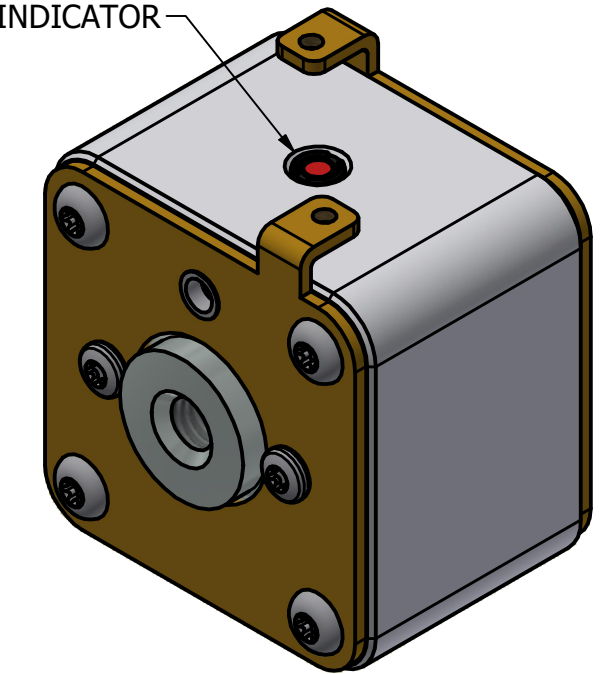
M4x0.7 THREAD
 10.00 [.394]
 STUD LENGTH



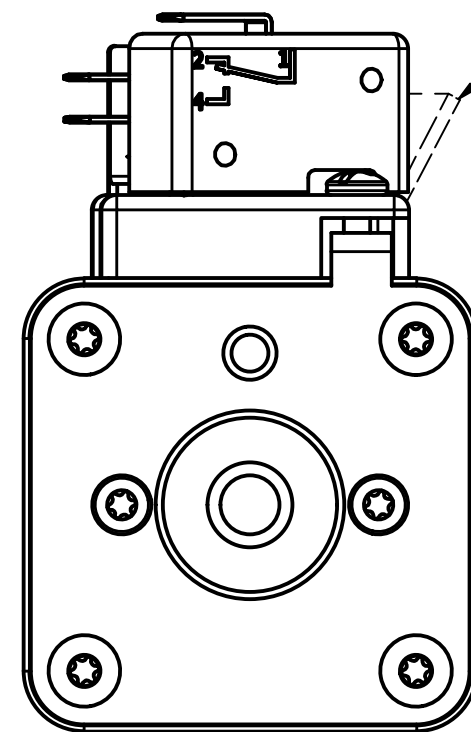
FUSE



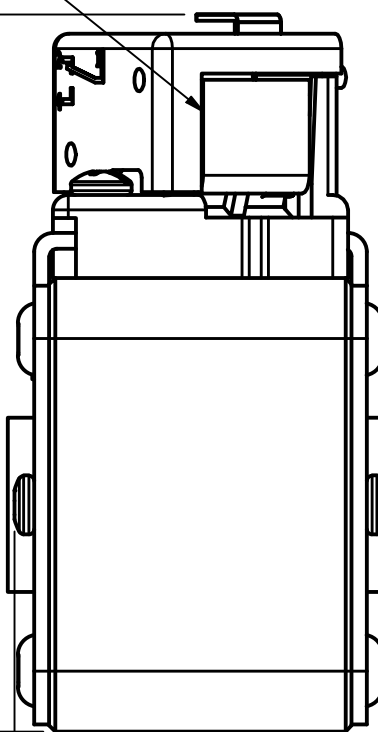
INTERNAL INDICATOR



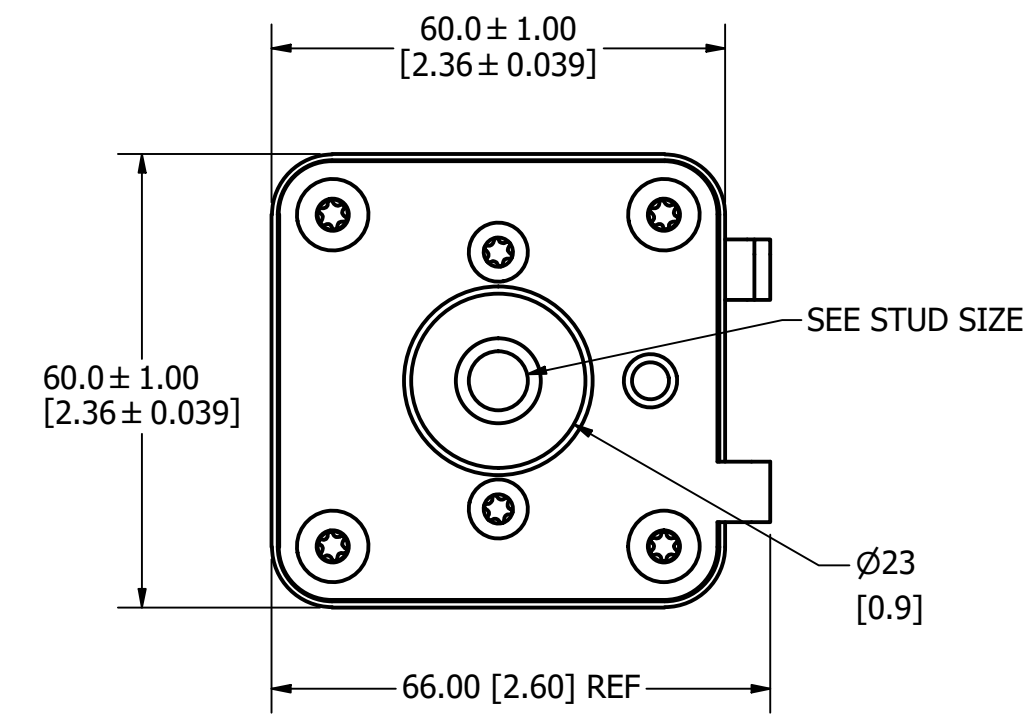
VISUAL INDICATOR



94.9 ± 1.50
 [3.74 ± 0.059]



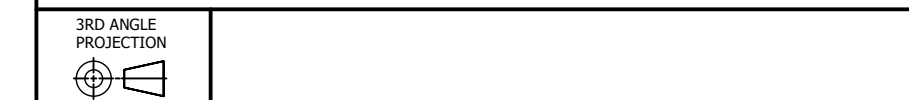
FUSE WITH MICRO-SWITCH



| | |
|------|--|
| ● | DENOTES CRITICAL CHARACTERISTICS. |
| CPK | DENOTES CPK DIMENSIONS, -MINIMUM CPK VALUE |
| (ST) | DENOTES A CHARACTERISTIC THAT PROVIDES AN INDICATION OF PROCESS PERFORMANCE. PROCEDURE FOR MEASUREMENT AND TRACKING TO BE DEFINED IN LITTELFUSE INSPECTION INSTRUCTIONS. |
| CP | DENOTES CP DIMENSIONS, -MINIMUM CP VALUE MUST BE WITHIN THE DIMENSIONAL LIMITATIONS SHOWN ON DRAWING AND INITIALLY LOCATED TO ALLOW FOR MAXIMUM TOOL LIFE. |

| | | | |
|--------------|----------------|-----------|----------------------------|
| MATL SPEC | FINISH | | |
| DRW TVESELSK | DATE 1/12/2024 | SCALE NTS | FINISH GOOD WT GRAMS/PIECE |

UNLESS OTHERWISE SPECIFIED, DIMENSIONS ARE IN MILLIMETERS, DIMENSIONS IN BRACKETS [] ARE INCHES DIMENSIONING AND DO NOT INCLUDE PLATING. TOLERANCING TO BE INTERPRETED IN ACCORDANCE WITH ANSI Y14.5M-1994



TITLE SQUARE BODY 32 CASE SIZE - ENGLISH THREAD OUTLINE

MOUNTING SPECS:

STUD SIZE: 1/2-13 UNC - 2B ∇ 13.0[0.51]

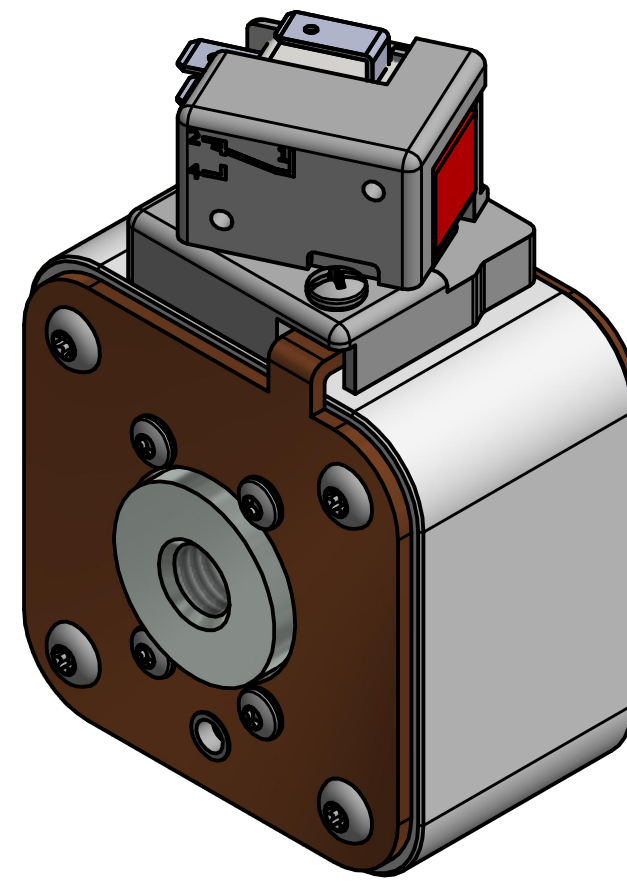
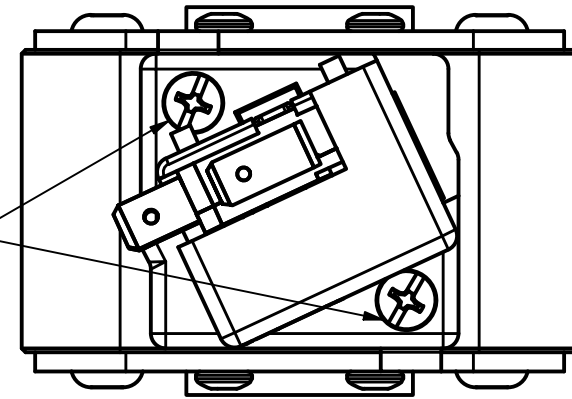
STUD TORQUE: 45-55Nm

| REVISION | | |
|----------|------------|---|
| REV | DATE | DESCRIPTION |
| A | 03/16/2016 | 517373GCP - RELEASED -TV |
| B | 10/19/2017 | 518344ECP - REVISE STUD SIZE NOTES -TV |
| C | 8/30/18 | 519782ECP/D - CHG STUD TORQUE MRY |
| D | 5/5/22 | 525159ECP/D - CHANGE HEIGHT, ADD TOLERANCES MRY |
| E | 5/19/22 | 525232ECP/D - UPDATE LENGTH DIMENSION MRY |
| F | 7/14/22 | 525433ECP/D - CHANGE HEIGHT DIMENSION FORMAT MRY |
| G | 1/17/24 | 536835ECP/D - ADDED VIEW WITHOUT MICRO-SWITCH JTM |

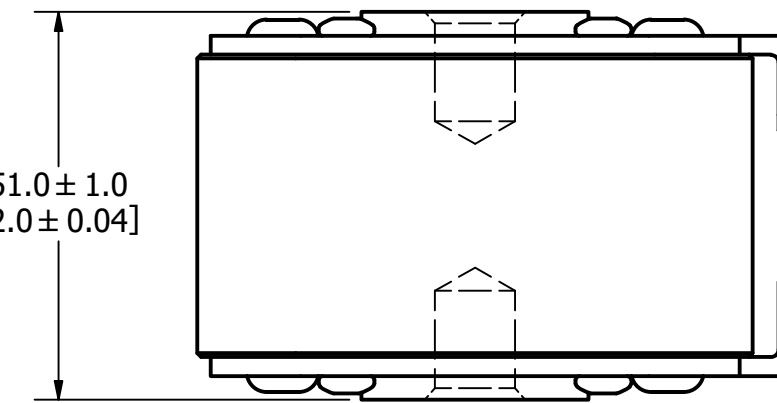
FUSE WITH MICRO-SWITCH

FUSE

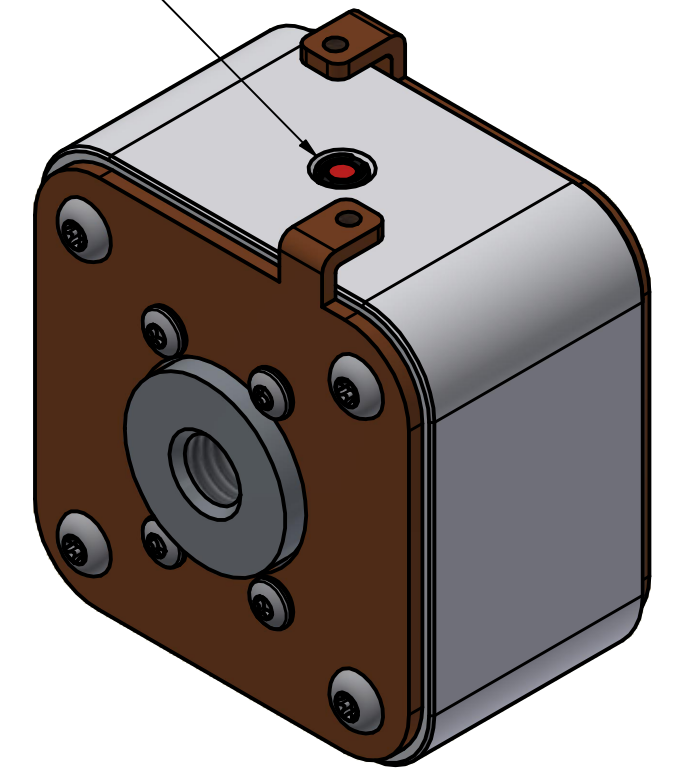
M4x0.7 THREAD
10.00 [.394]
STUD LENGTH



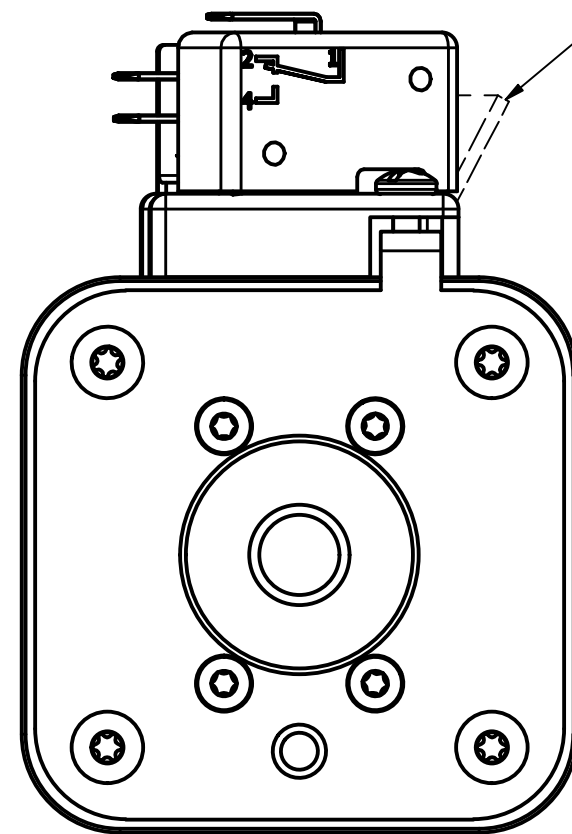
51.0 ± 1.0
[2.0 ± 0.04]



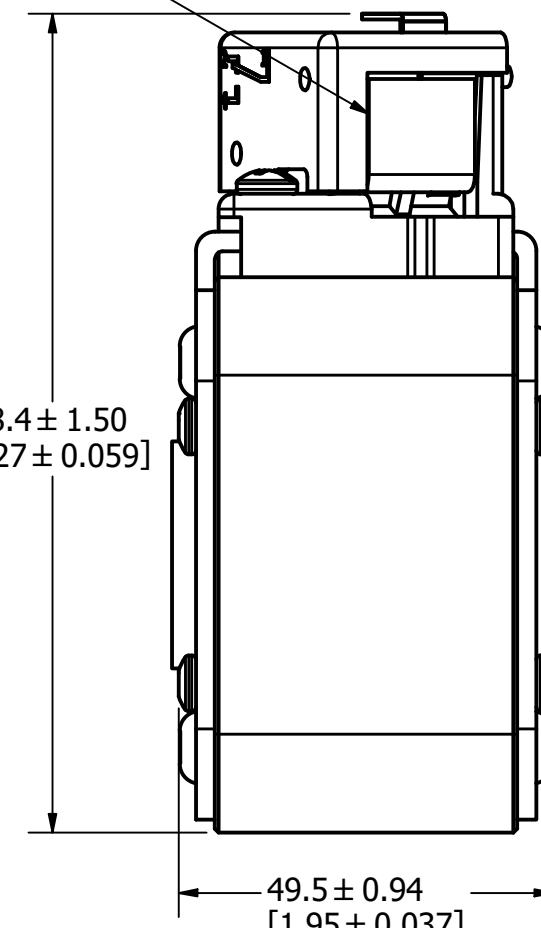
INTERNAL INDICATOR



VISUAL INDICATOR

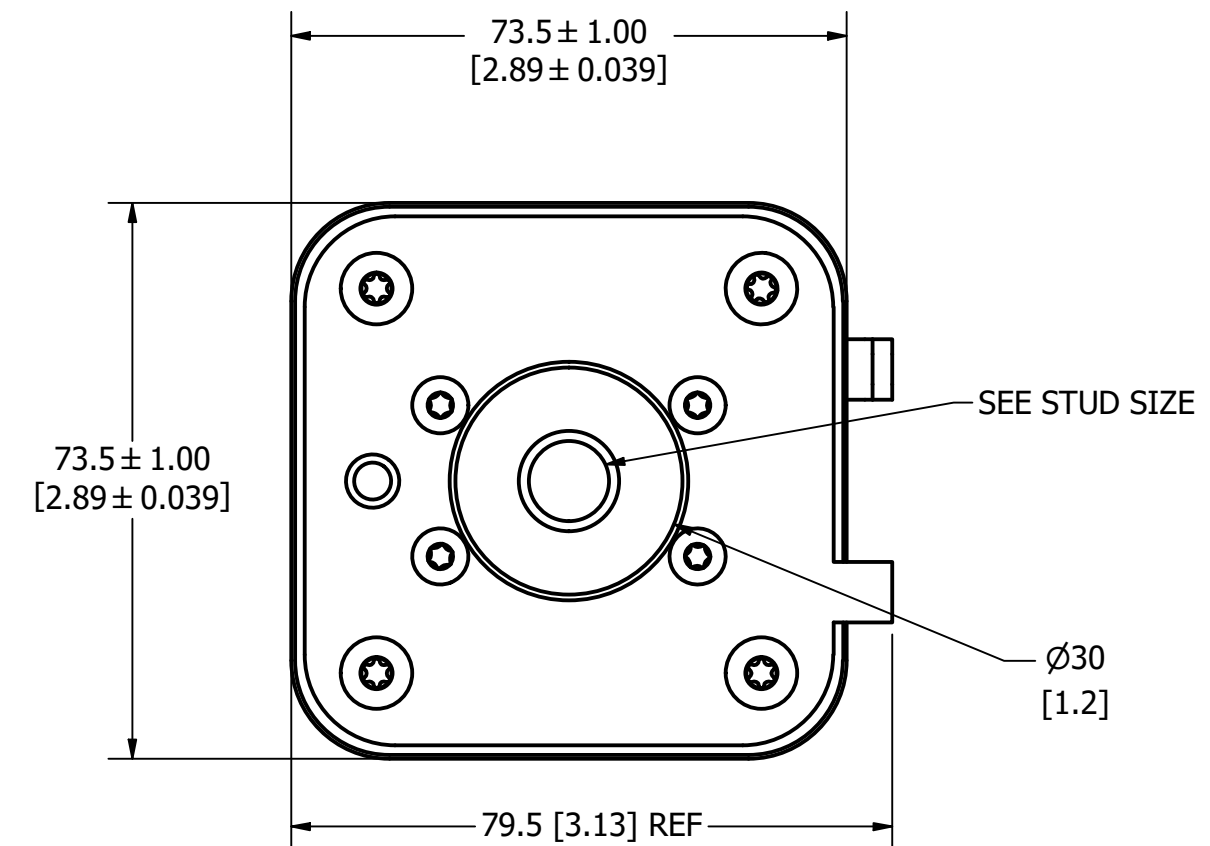


108.4 ± 1.50
[4.27 ± 0.059]



49.5 ± 0.94
[1.95 ± 0.037]

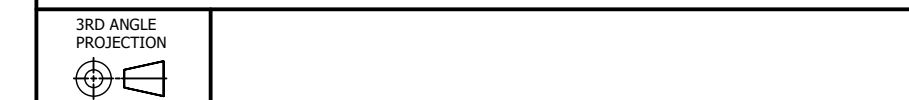
FUSE WITH MICRO-SWITCH



| | |
|------|--|
| ● | DENOTES CRITICAL CHARACTERISTICS. |
| CPK | DENOTES CPK DIMENSIONS, -MINIMUM CPK VALUE |
| (ST) | DENOTES A CHARACTERISTIC THAT PROVIDES AN INDICATION OF PROCESS PERFORMANCE. PROCEDURE FOR MEASUREMENT AND TRACKING TO BE DEFINED IN LITTELFUSE INSPECTION INSTRUCTIONS. |
| CP | DENOTES CP DIMENSIONS, -MINIMUM CP VALUE MUST BE WITHIN THE DIMENSIONAL LIMITATIONS SHOWN ON DRAWING AND INITIALLY LOCATED TO ALLOW FOR MAXIMUM TOOL LIFE. |

| | | | |
|--------------|-----------------|-----------|----------------------------|
| MATL SPEC | FINISH | | |
| DRW TVESELSK | DATE 12/31/1969 | SCALE NTS | FINISH GOOD WT GRAMS/PIECE |

UNLESS OTHERWISE SPECIFIED, DIMENSIONS ARE IN MILLIMETERS, DIMENSIONS IN BRACKETS [] ARE INCHES DIMENSIONING AND DO NOT INCLUDE PLATING. TOLERANCING TO BE INTERPRETED IN ACCORDANCE WITH ANSI Y14.5M-1994



TITLE SQUARE BODY 33 CASE SIZE - ENGLISH THREAD OUTLINE

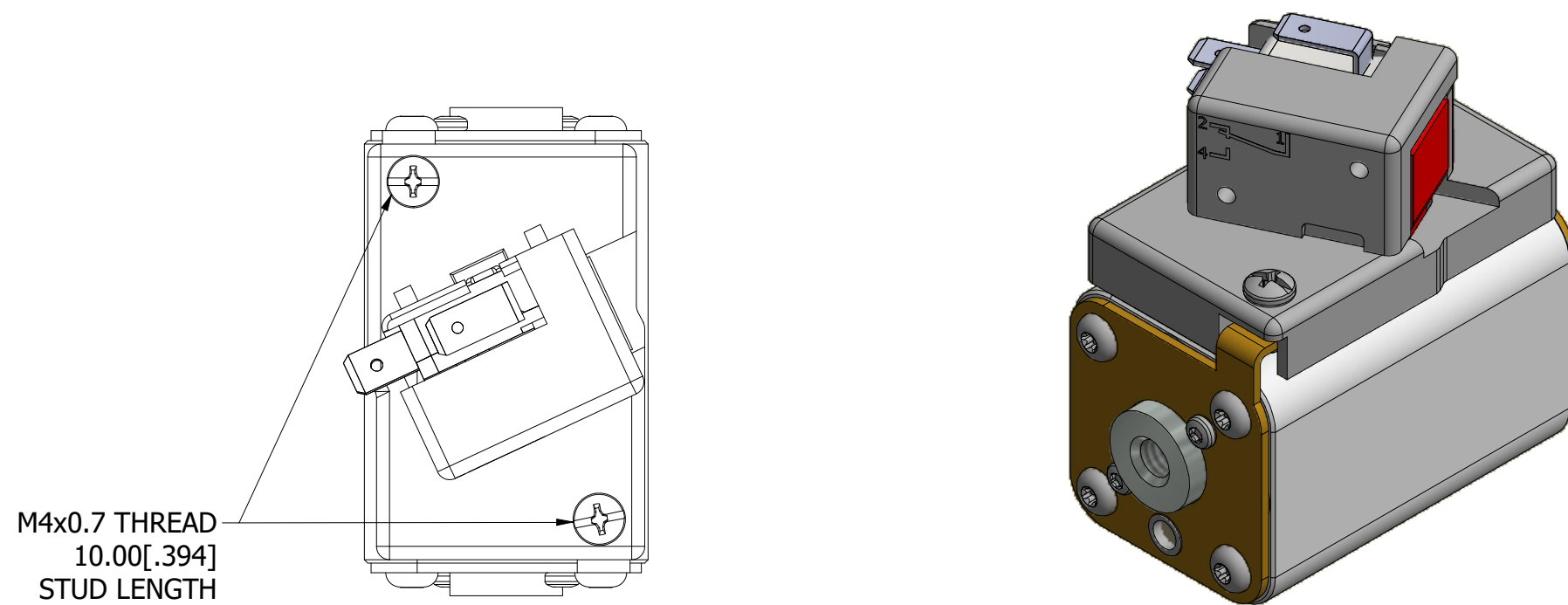
| REVISION | | |
|----------|------------|--|
| REV | DATE | DESCRIPTION |
| A | 01/10/2018 | 518685GCP - RELEASED -TV |
| B | 8/30/18 | 519782ECP/D - CHG STUD TORQUE MRY |
| C | 5/5/22 | 525161ECP/D - CHANGE HEIGHT, ADD TOLERANCES MRY |
| D | 5/19/22 | 525232ECP/D - UPDATE LENGTH DIMENSION MRY |
| E | 7/14/22 | 525433ECP/D - CHANGE HEIGHT DIMENSION FORMAT MRY |
| F | 10/24/23 | 526836ECP/D - ADD VIEW W/O MICROSWITCH MRY |

MOUNTING SPECS

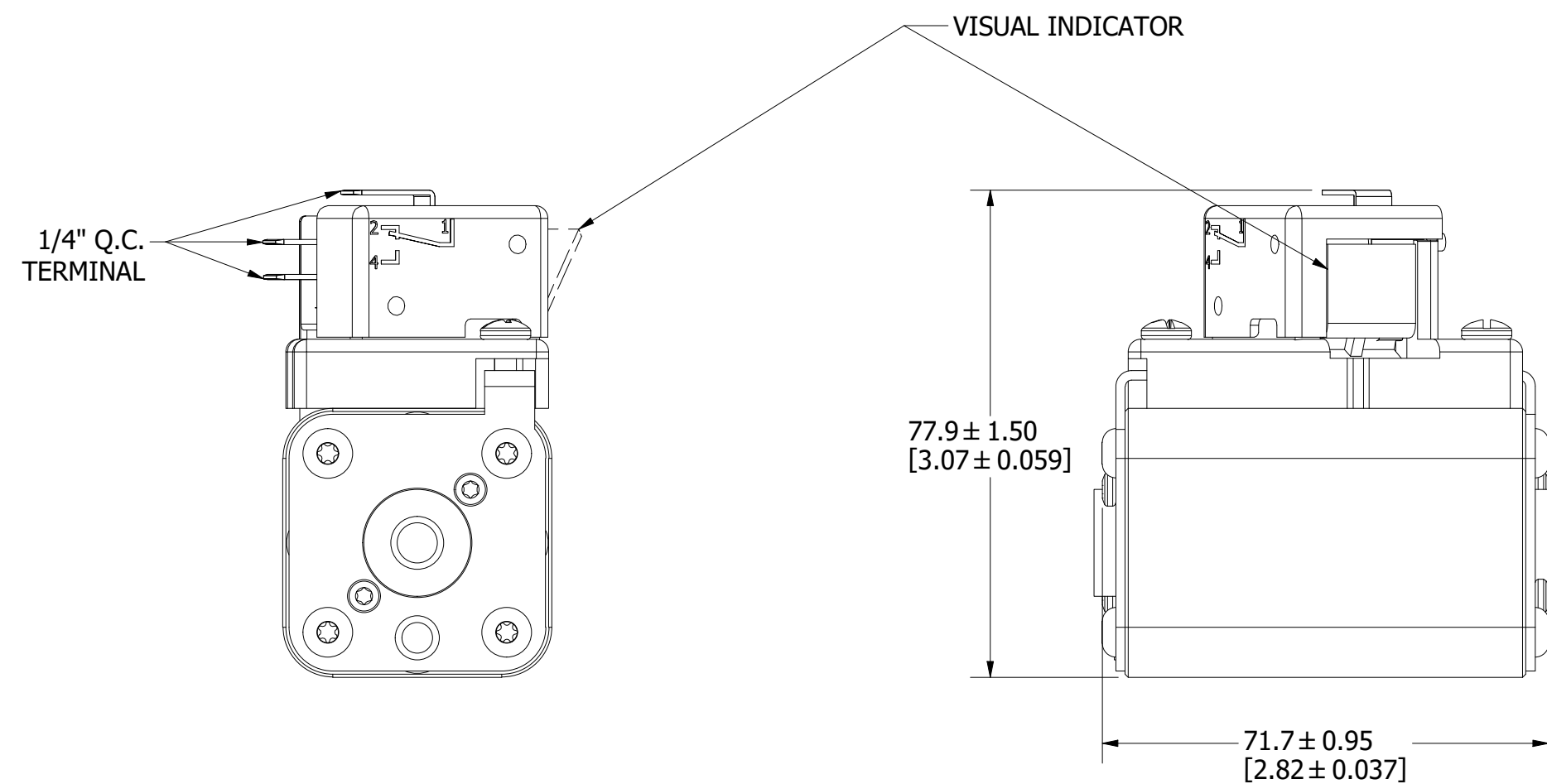
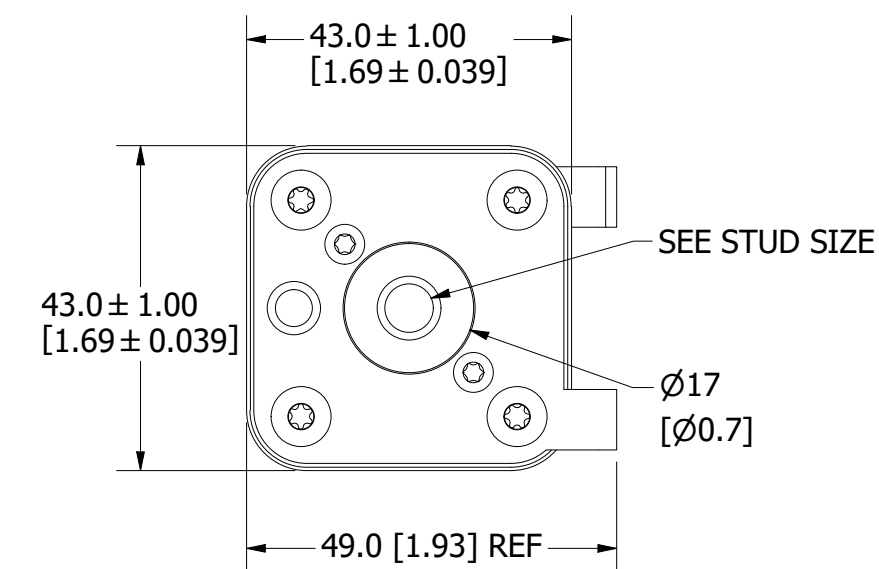
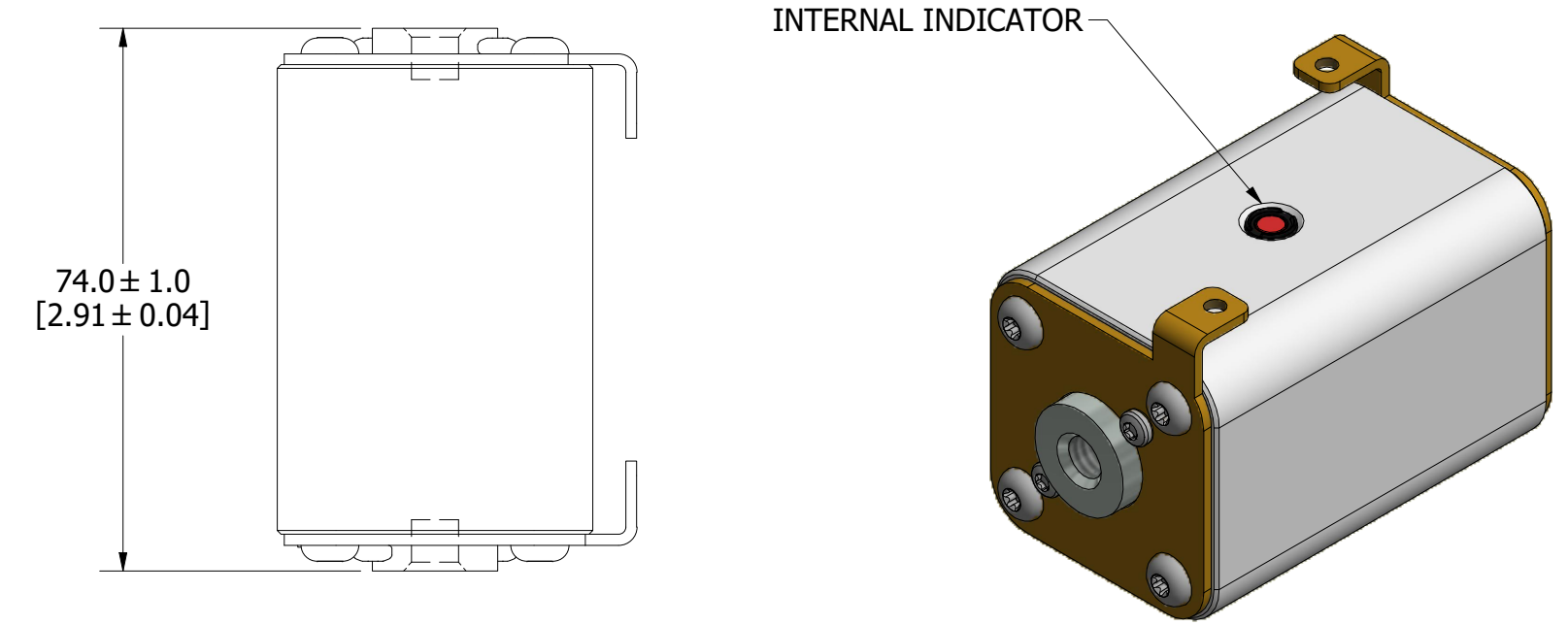
STUD SIZE: 5/16-18 UNC-2B ∇ 6.0 [0.24]

STUD TORQUE: 13-20Nm

FUSE WITH MICROSWITCH



FUSE



FUSE WITH MICROSWITCH

| | |
|------|--|
| ● | DENOTES CRITICAL CHARACTERISTICS. |
| CPK | DENOTES CPK DIMENSIONS, -MINIMUM CPK VALUE |
| (ST) | DENOTES A CHARACTERISTIC THAT PROVIDES AN INDICATION OF PROCESS PERFORMANCE. PROCEDURE FOR MEASUREMENT AND TRACKING TO BE DEFINED IN LITTELFUSE INSPECTION INSTRUCTIONS. |
| CP | DENOTES CP DIMENSIONS, -MINIMUM CP VALUE MUST BE WITHIN THE DIMENSIONAL LIMITATIONS SHOWN ON DRAWING AND INITIALLY LOCATED TO ALLOW FOR MAXIMUM TOOL LIFE. |

| | | | |
|--------------|----------------|-----------|----------------------------|
| MATL SPEC | FINISH | | |
| DRW TVESELSK | DATE 11/6/2013 | SCALE NTS | FINISH GOOD WT GRAMS/PIECE |

UNLESS OTHERWISE SPECIFIED, DIMENSIONS ARE IN MILLIMETERS, DIMENSIONS IN BRACKETS [] ARE INCHES DIMENSIONING AND DO NOT INCLUDE PLATING. TOLERANCING TO BE INTERPRETED IN ACCORDANCE WITH ANSI Y14.5M-1994



TITLE SQUARE BODY 70 CASE SIZE - ENGLISH THREAD OUTLINE

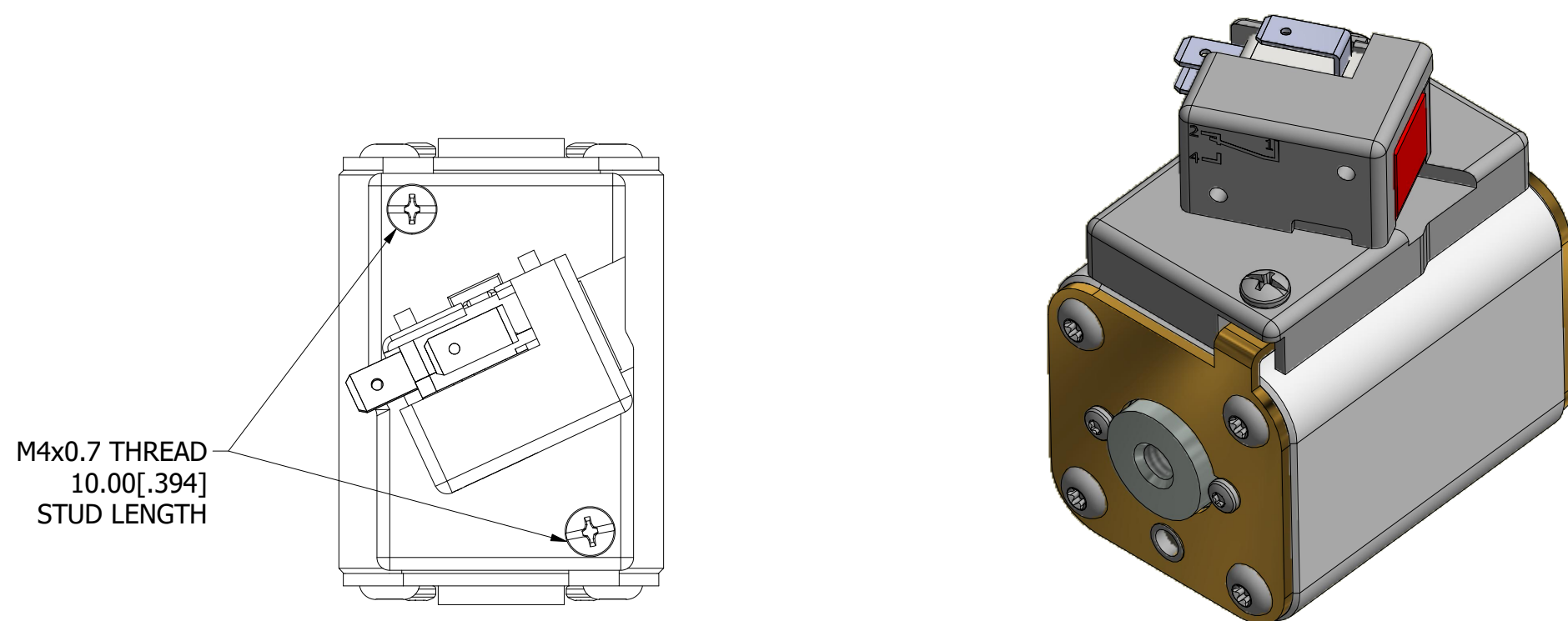
MOUNTING SPECS

STUD SIZE: 5/16-18 UNC-2B ∇ 8.0[0.31]

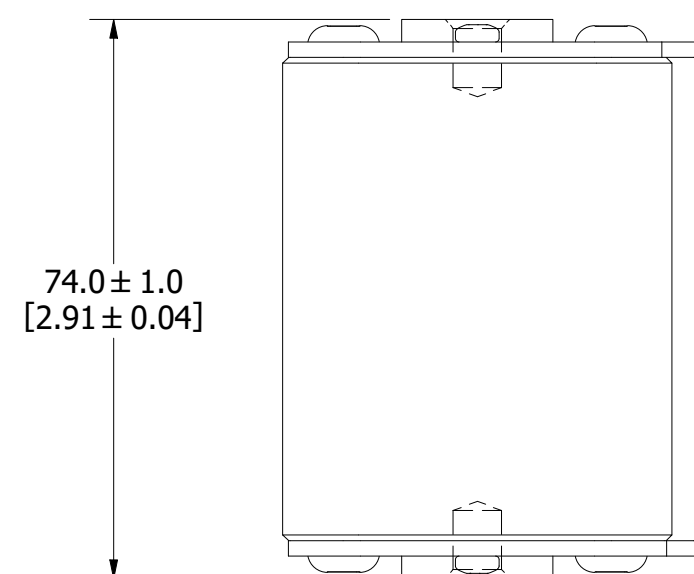
STUD TORQUE: 13-20Nm

| REVISION | | |
|----------|------------|--|
| REV | DATE | DESCRIPTION |
| A | 03/16/2016 | 518344GCP - RELEASED -TV |
| B | 10/19/2017 | 518344ECP - REVISE MOUNTING SPEC NOTES -TV |
| C | 8/30/18 | 519782ECP/D - CHG STUD TORQUE MRY |
| D | 5/5/22 | 525161ECP/D - CHANGE HEIGHT, ADD TOLERANCES MRY |
| E | 5/19/22 | 525232ECP/D - UPDATE LENGTH DIMENSION MRY |
| F | 7/14/22 | 525433ECP/D - CHANGE HEIGHT DIMENSION FORMAT MRY |
| G | 10/24/23 | 526836ECP/D - ADD VIEW W/O MICROSWITCH MRY |

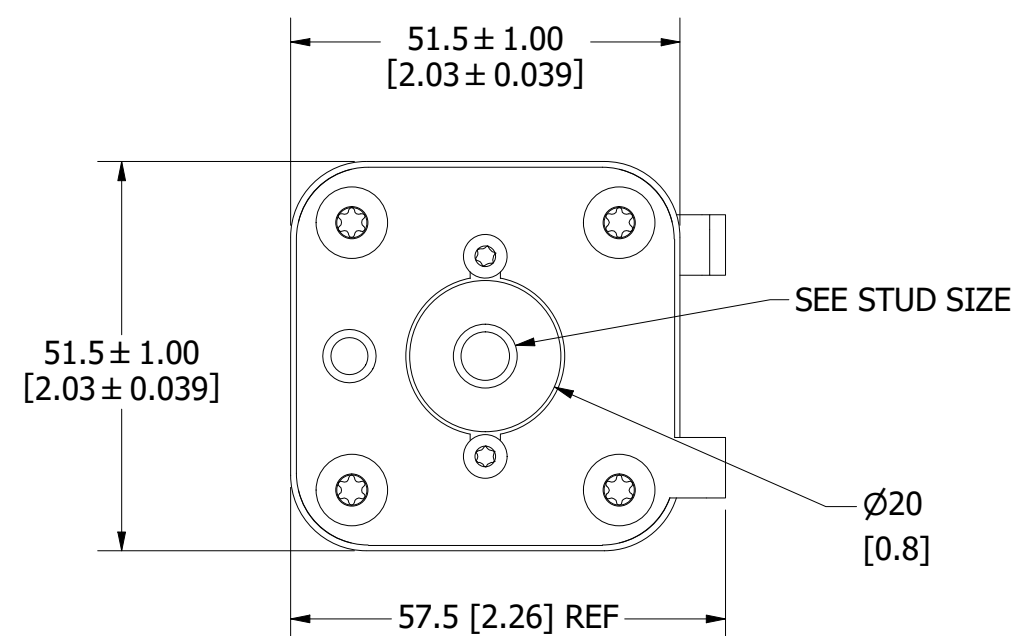
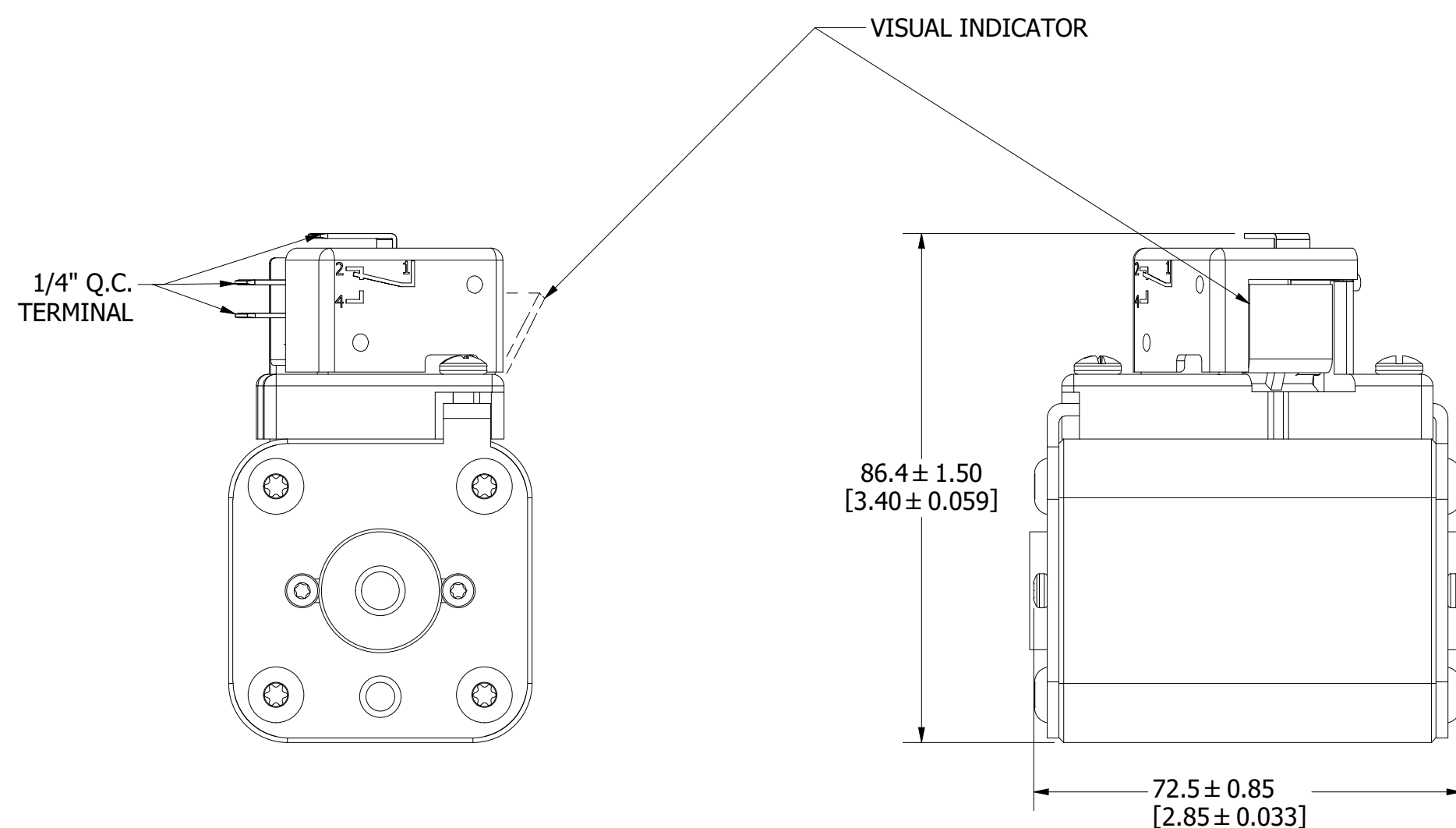
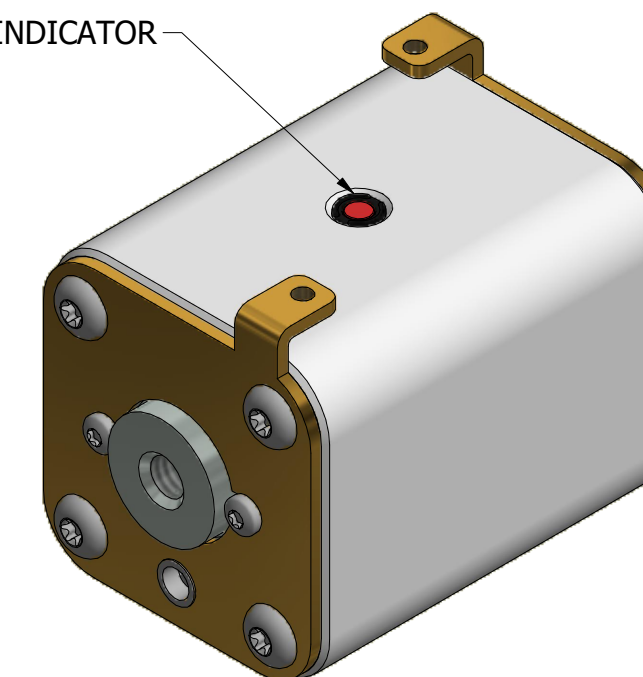
FUSE WITH MICROSWITCH



FUSE



INTERNAL INDICATOR



FUSE WITH MICROSWITCH

| | |
|------|--|
| ● | DENOTES CRITICAL CHARACTERISTICS. |
| CPK | DENOTES CPK DIMENSIONS, -MINIMUM CPK VALUE |
| (ST) | DENOTES A CHARACTERISTIC THAT PROVIDES AN INDICATION OF PROCESS PERFORMANCE. PROCEDURE FOR MEASUREMENT AND TRACKING TO BE DEFINED IN LITTELFUSE INSPECTION INSTRUCTIONS. |
| CP | DENOTES CP DIMENSIONS, -MINIMUM CP VALUE MUST BE WITHIN THE DIMENSIONAL LIMITATIONS SHOWN ON DRAWING AND INITIALLY LOCATED TO ALLOW FOR MAXIMUM TOOL LIFE. |

| MATL SPEC | FINISH |
|--------------|----------------------------|
| DRW TVESELSK | DATE 11/6/2013 |
| SCALE NTS | FINISH GOOD WT GRAMS/PIECE |

UNLESS OTHERWISE SPECIFIED, DIMENSIONS ARE IN MILLIMETERS, DIMENSIONS IN BRACKETS [] ARE INCHES DIMENSIONING AND DO NOT INCLUDE PLATING. TOLERANCING TO BE INTERPRETED IN ACCORDANCE WITH ANSI Y14.5M-1994



TITLE SQUARE BODY 71 CASE SIZE - ENGLISH THREAD OUTLINE

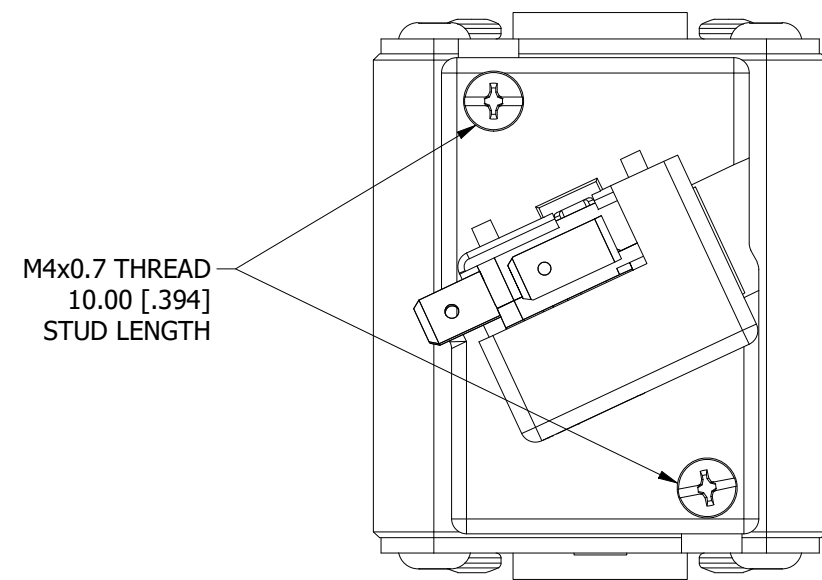
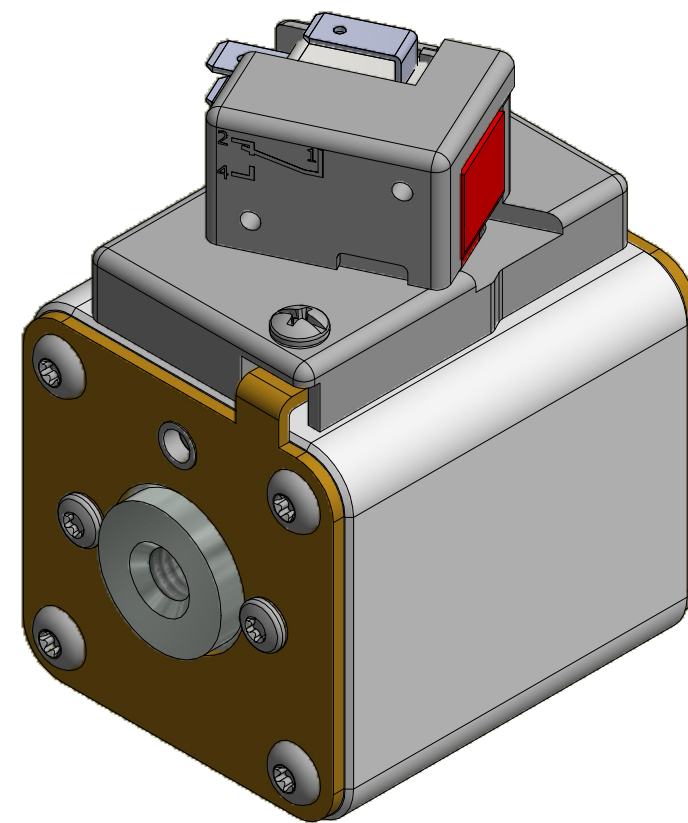
| REVISION | | |
|----------|------------|--|
| REV | DATE | DESCRIPTION |
| A | 03/16/2016 | 517373GCP - RELEASED -TV |
| B | 10/19/2017 | 518344ECP - REVISE STUD SIZE NOTES -TV |
| C | 8/30/18 | 519782ECP/D - CHG STUD TORQUE MRY |
| D | 5/5/22 | 525161ECP/D - CHANGE HEIGHT, ADD TOLERANCES MRY |
| E | 5/19/22 | 525232ECP/D - UPDATE LENGTH DIMENSION MRY |
| F | 7/14/22 | 525433ECP/D - CHANGE HEIGHT DIMENSION FORMAT MRY |
| G | 10/24/23 | 526836ECP/D - ADD VIEW W/O MICROSWITCH MRY |

MOUNTING SPECS:

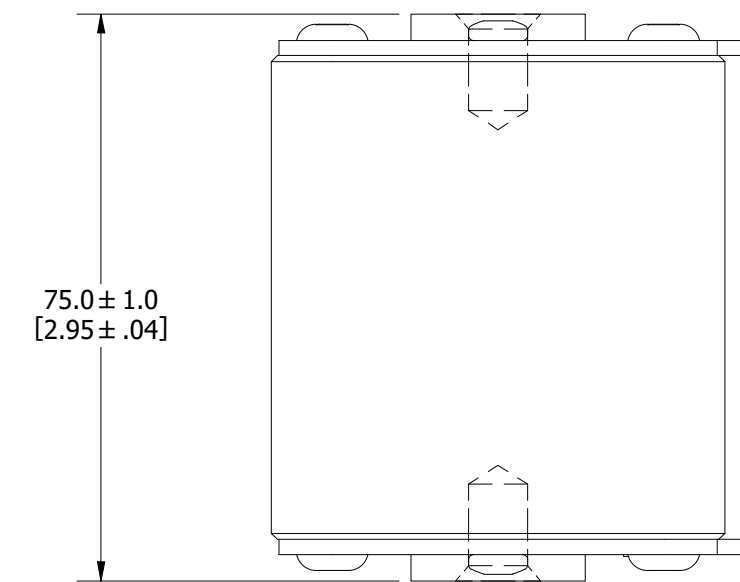
STUD SIZE: 3/8-16 UNC-2B ∇ 11.5[0.45]

STUD TORQUE: 26-35Nm

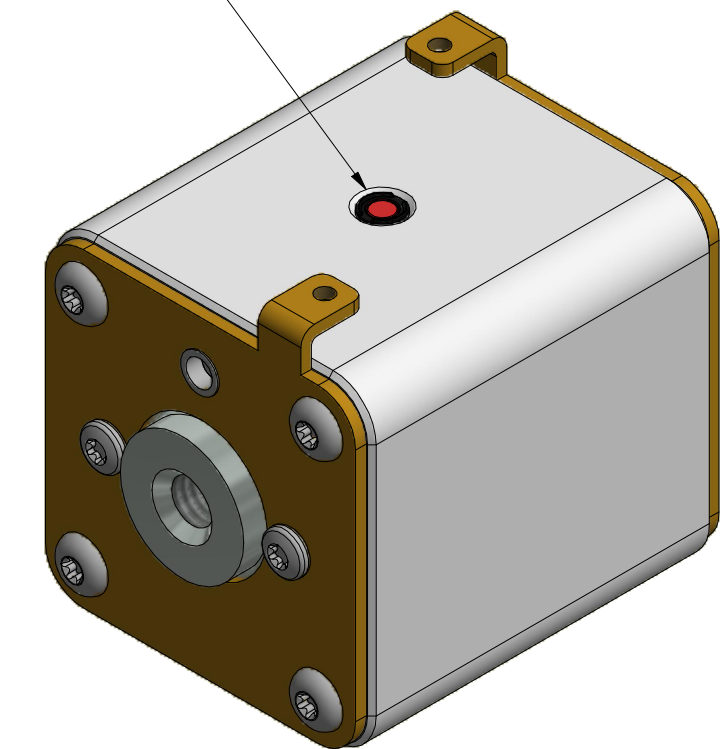
FUSE WITH MICROSWITCH



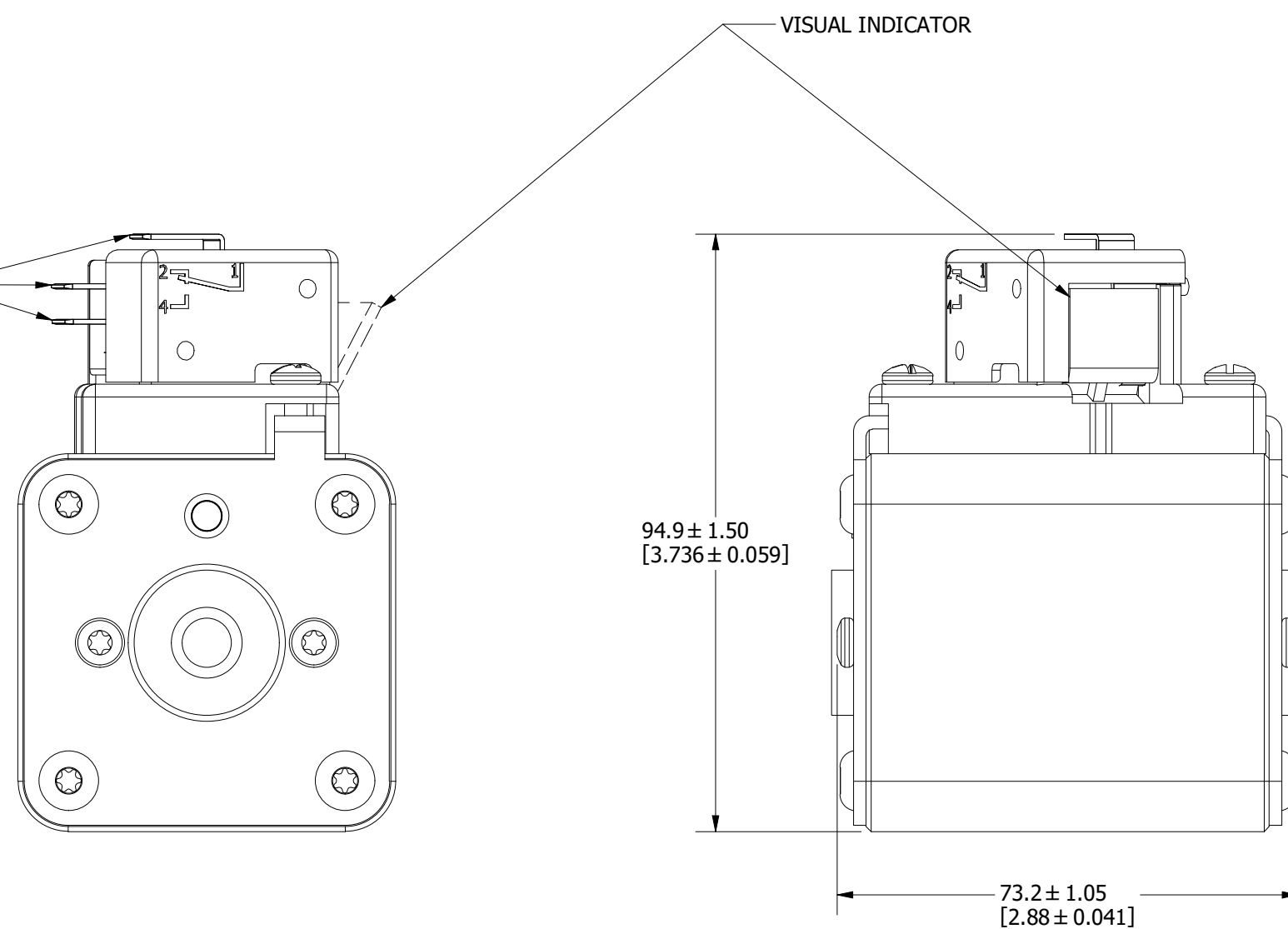
FUSE



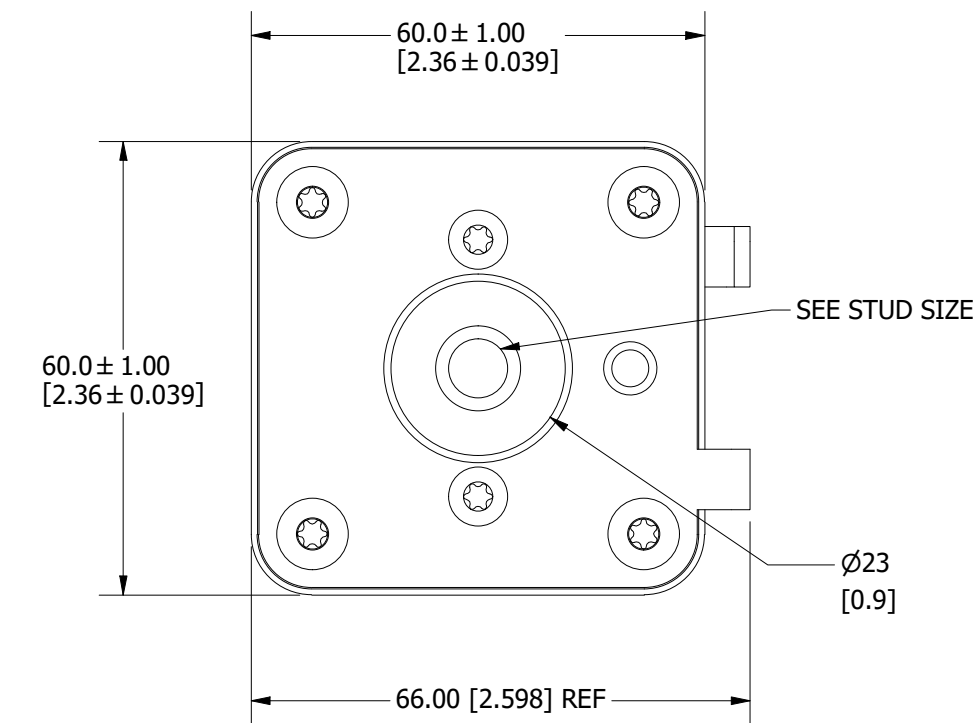
INTERNAL INDICATOR



1/4" Q.C. TERMINAL



FUSE WITH MICROSWITCH



| | |
|------|--|
| ● | DENOTES CRITICAL CHARACTERISTICS. |
| CPK | DENOTES CPK DIMENSIONS, -MINIMUM CPK VALUE |
| (ST) | DENOTES A CHARACTERISTIC THAT PROVIDES AN INDICATION OF PROCESS PERFORMANCE. PROCEDURE FOR MEASUREMENT AND TRACKING TO BE DEFINED IN LITTELFUSE INSPECTION INSTRUCTIONS. |
| CP | DENOTES CP DIMENSIONS, -MINIMUM CP VALUE MUST BE WITHIN THE DIMENSIONAL LIMITATIONS SHOWN ON DRAWING AND INITIALLY LOCATED TO ALLOW FOR MAXIMUM TOOL LIFE. |

| | | | |
|--------------|----------------|-----------|----------------------------|
| MATL SPEC | FINISH | | |
| DRW TVESELSK | DATE 2/15/2016 | SCALE NTS | FINISH GOOD WT GRAMS/PIECE |

UNLESS OTHERWISE SPECIFIED, DIMENSIONS ARE IN MILLIMETERS, DIMENSIONS IN BRACKETS [] ARE INCHES DIMENSIONING AND DO NOT INCLUDE PLATING. TOLERANCING TO BE INTERPRETED IN ACCORDANCE WITH ANSI Y14.5M-1994



TITLE SQUARE BODY 72 CASE SIZE - ENGLISH THREAD OUTLINE

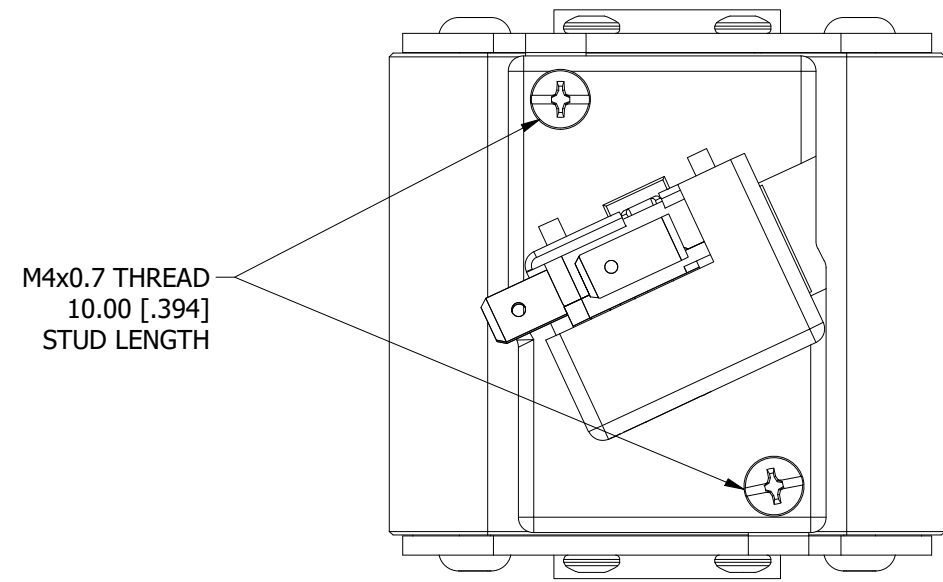
| REVISION | | |
|----------|------------|--|
| REV | DATE | DESCRIPTION |
| A | 01/10/2018 | 518685GCP - RELEASED -TV |
| B | 8/30/18 | 519782ECP/D - CHG STUD TORQUE MRY |
| C | 5/5/22 | 525161ECP/D - CHANGE HEIGHT, ADD TOLERANCES MRY |
| D | 5/19/22 | 525232ECP/D - UPDATE LENGTH DIMENSION MRY |
| E | 7/14/22 | 525433ECP/D - CHANGE HEIGHT DIMENSION FORMAT MRY |
| F | 10/24/23 | 526836ECP/D - ADD VIEW W/O MICROSWITCH MRY |

MOUNTING SPECS:

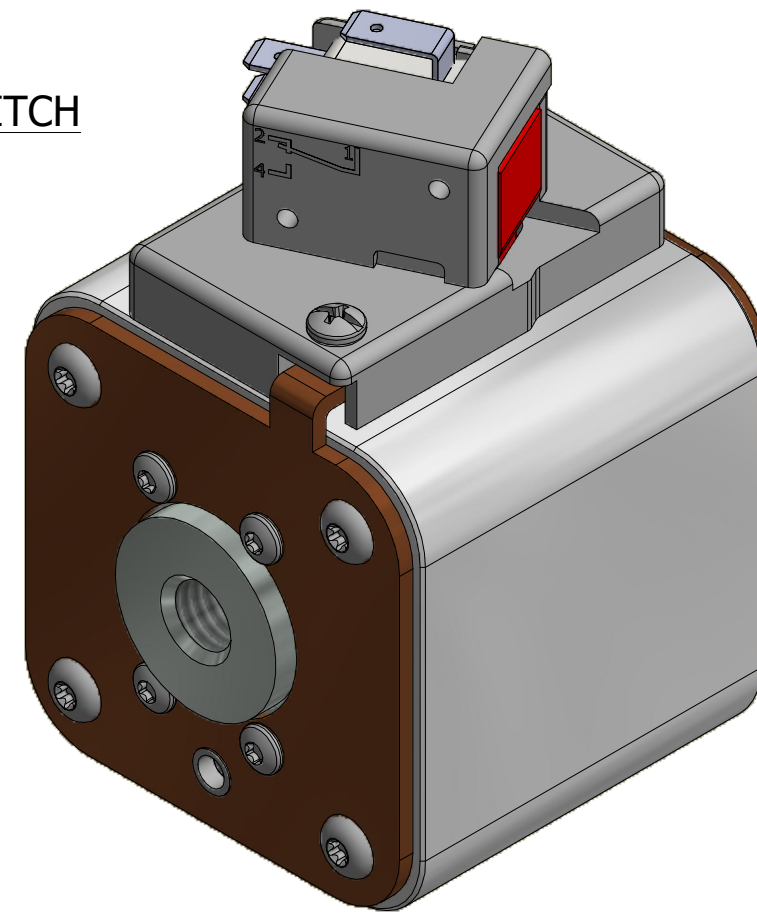
STUD SIZE: 1/2-13 UNC - 2B ∇ 13.0 [0.51]

STUD TORQUE: 45-55Nm

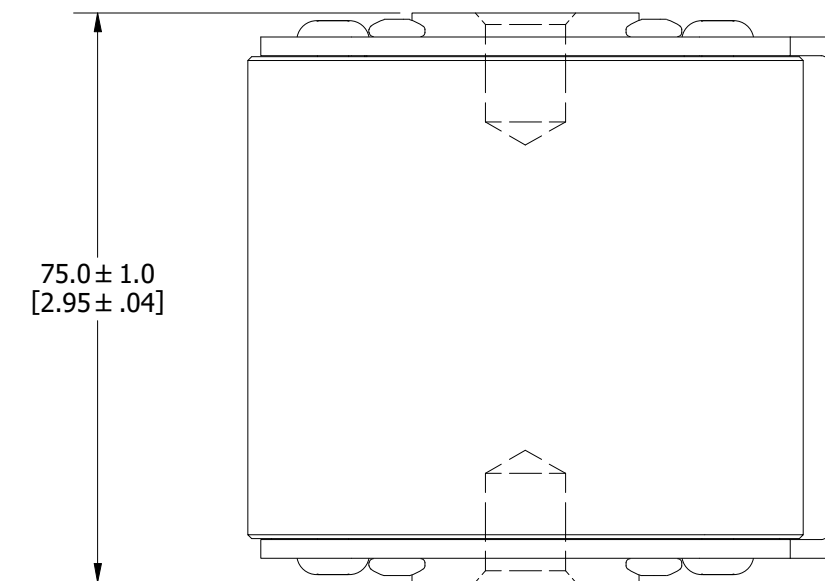
FUSE WITH MICROSWITCH



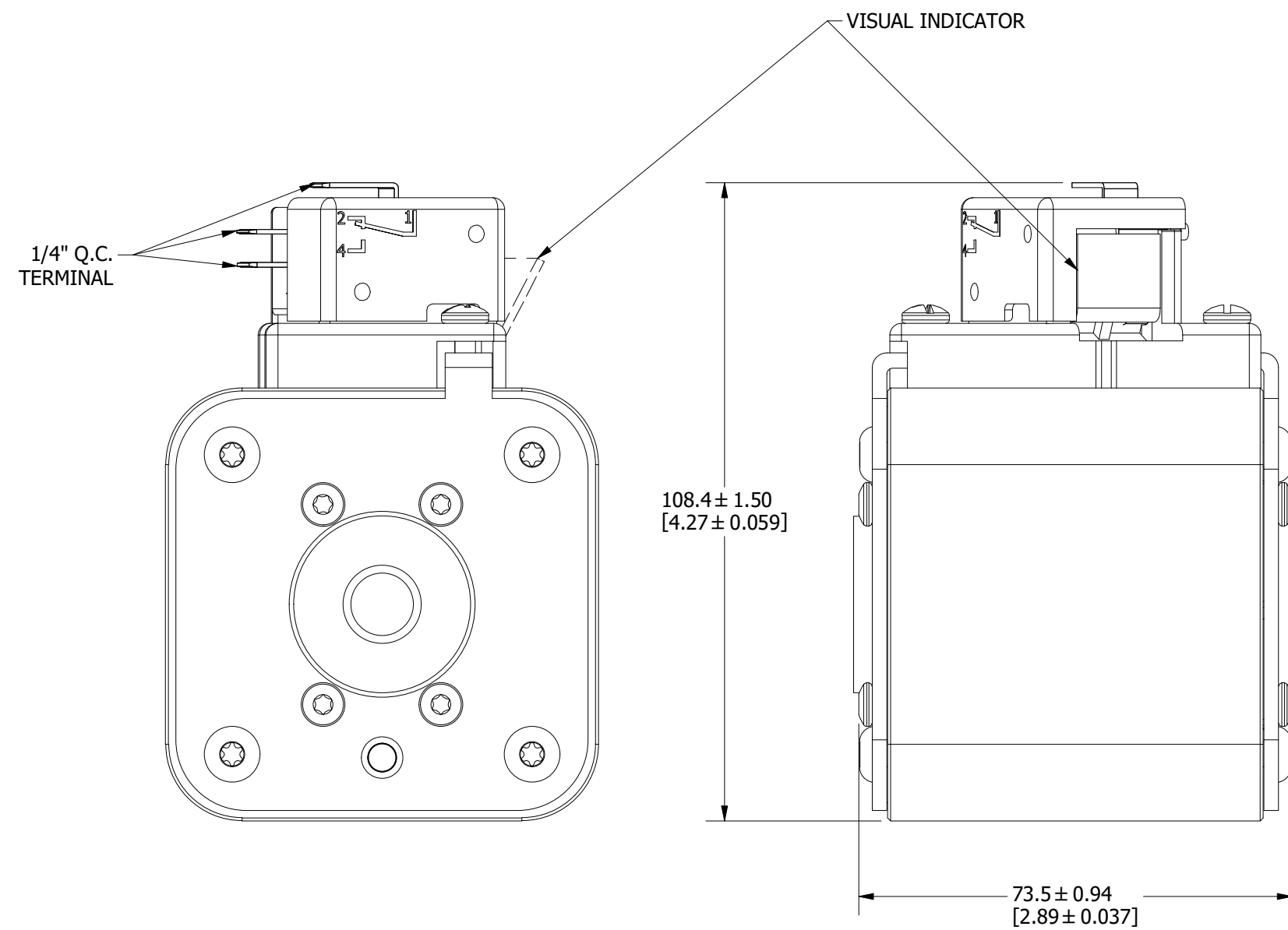
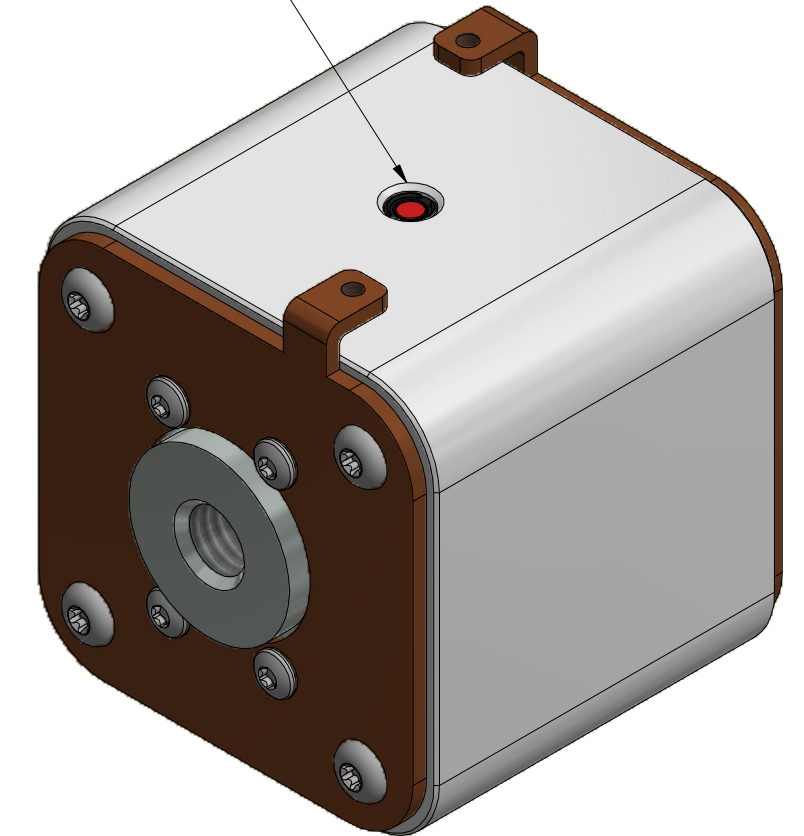
M4x0.7 THREAD
10.00 [.394]
STUD LENGTH



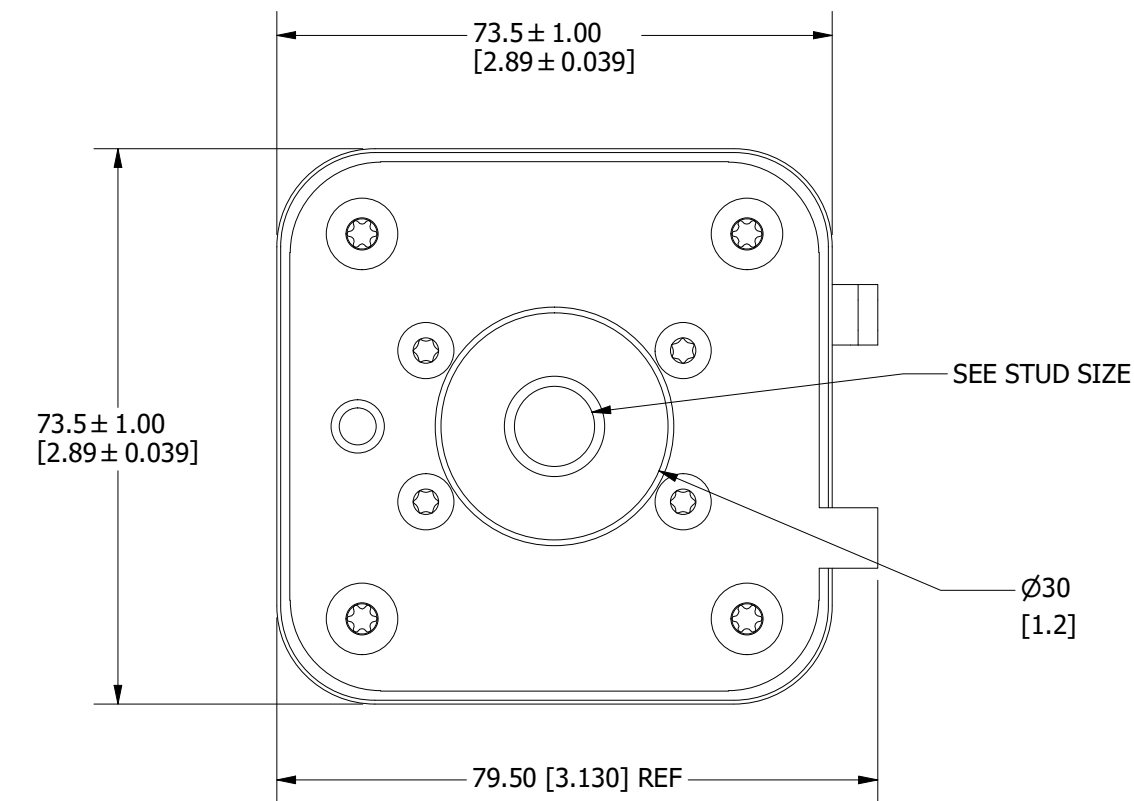
FUSE



INTERNAL INDICATOR



FUSE WITH MICROSWITCH



| | |
|------|--|
| ● | DENOTES CRITICAL CHARACTERISTICS. |
| CPK | DENOTES CPK DIMENSIONS, -MINIMUM CPK VALUE |
| (ST) | DENOTES A CHARACTERISTIC THAT PROVIDES AN INDICATION OF PROCESS PERFORMANCE. PROCEDURE FOR MEASUREMENT AND TRACKING TO BE DEFINED IN LITTELFUSE INSPECTION INSTRUCTIONS. |
| CP | DENOTES CP DIMENSIONS, -MINIMUM CP VALUE MUST BE WITHIN THE DIMENSIONAL LIMITATIONS SHOWN ON DRAWING AND INITIALLY LOCATED TO ALLOW FOR MAXIMUM TOOL LIFE. |

| | | | |
|--------------|---------------|-----------|----------------------------|
| MATL SPEC | FINISH | | |
| DRW TVESELSK | DATE 2/4/2016 | SCALE NTS | FINISH GOOD WT GRAMS/PIECE |

UNLESS OTHERWISE SPECIFIED, DIMENSIONS ARE IN MILLIMETERS, DIMENSIONS IN BRACKETS [] ARE INCHES DIMENSIONING AND DO NOT INCLUDE PLATING. TOLERANCING TO BE INTERPRETED IN ACCORDANCE WITH ANSI Y14.5M-1994



TITLE SQUARE BODY 73 CASE - ENGLISH THREAD OUTLINE