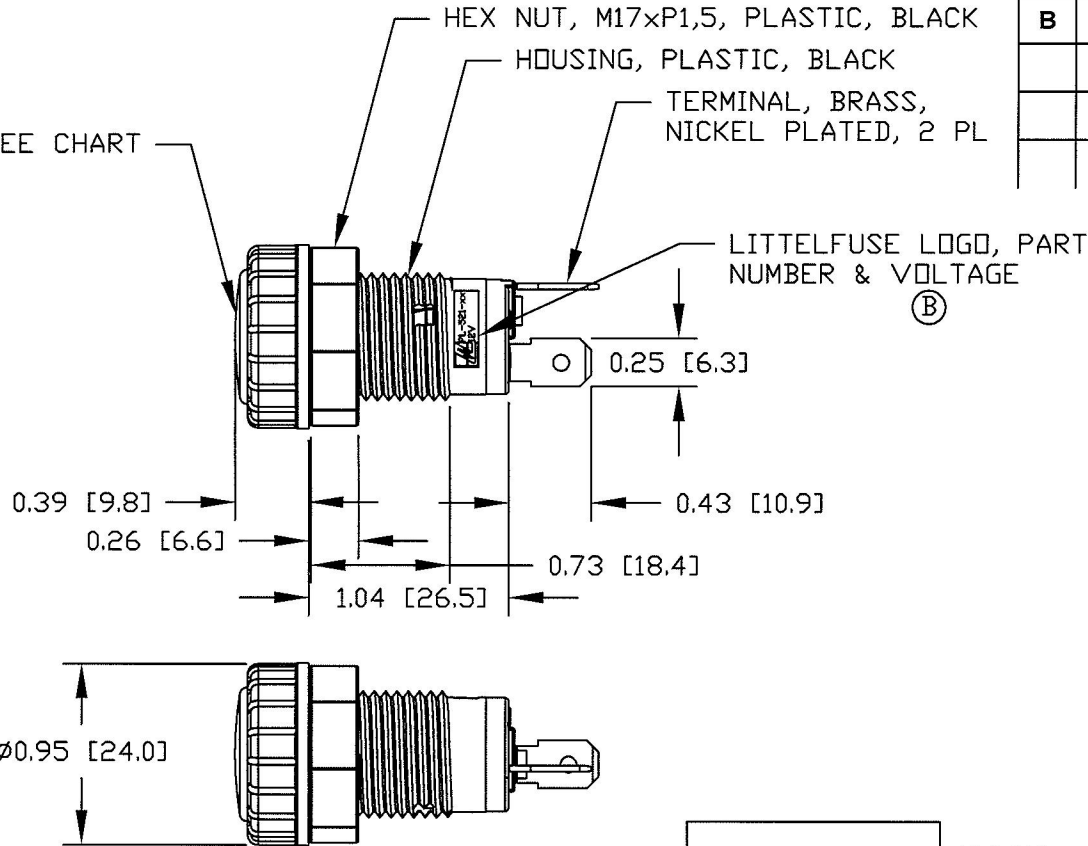


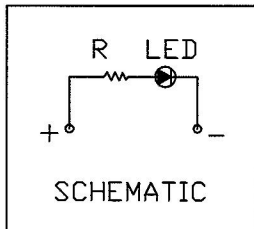
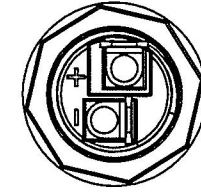
MDUNTING HOLE

LENS & LED, SEE CHART



Revision Control Record

| Rev. | Description of Change | ECN No. | Date     |
|------|-----------------------|---------|----------|
| A    | RELEASED DRAWING      | 11390   | 10/28/11 |
| B    | ADDED LABEL           | 12060   | 2/15/12  |
|      |                       |         |          |
|      |                       |         |          |
|      |                       |         |          |



- NOTES:  
1. POLARITY SENSITIVE  
2. RATING: 12Vdc  
3. ILLUMINATION: 500 LUX

|           |                  |
|-----------|------------------|
| PL-521-RC | RED              |
| PL-521-GC | GREEN            |
| PL-521-AC | AMBER            |
| PT NO     | LENS & LED COLOR |

**Tolerances** Unless otherwise specifically noted, the following are default tolerances:  
**2-places** +/- 0.02"  
**3-places** +/- 0.005"  
**Angular** +/- 1'  
 Metric: Shown in [ ] refers to equivalent English Dim Tol  
 "REF." or an Asterisk (\*) = Non-Toleranced Reference Dimension, shown for clarification purposes only.  
 NOTE: All tolerances are Non-Cumulative.

**PROPRIETARY INFORMATION**  
 This Engineering Drawing, and the information contained herein, is proprietary to Cole Hersee Company and may not be disclosed, re-produced, or in any other way transferred or communicated to any other party without the express written consent of an authorized representative of Cole Hersee Company.

- Special Characteristics:**
- Critical Characteristic, relating to Safety and/or Regulatory Compliance
  - Significant Characteristic relating to Process Control
  - Control Dimension relating to Form - Fit - Function as defined by Cole Hersee Company and/or the Customer

**Cole Hersee Co.**  
 20 Old Colony Ave., South Boston, MA, 02127  
 Phn: 617-268-2100 Web: www.colehersee.com

**Description:**  
**PILOT LIGHT**

|                                      |                           |
|--------------------------------------|---------------------------|
| <b>Drawing / Part No.:</b><br>PL-521 | <b>Current Rev.:</b><br>B |
|--------------------------------------|---------------------------|