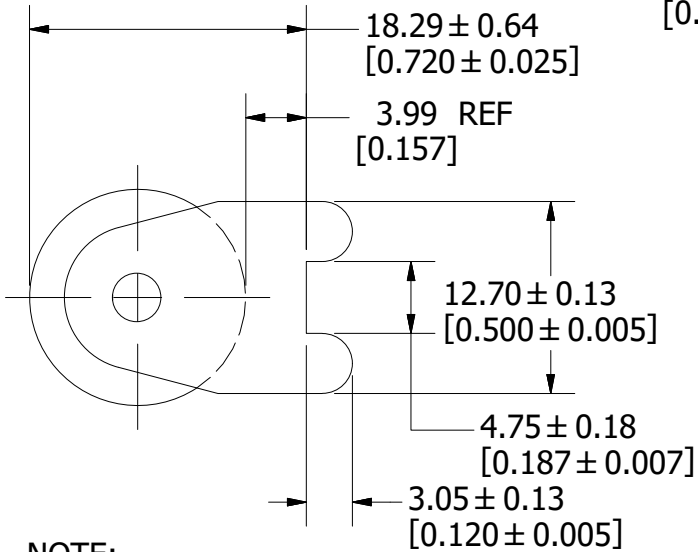
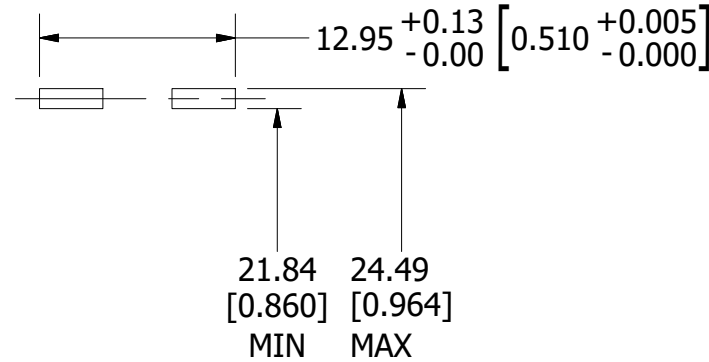
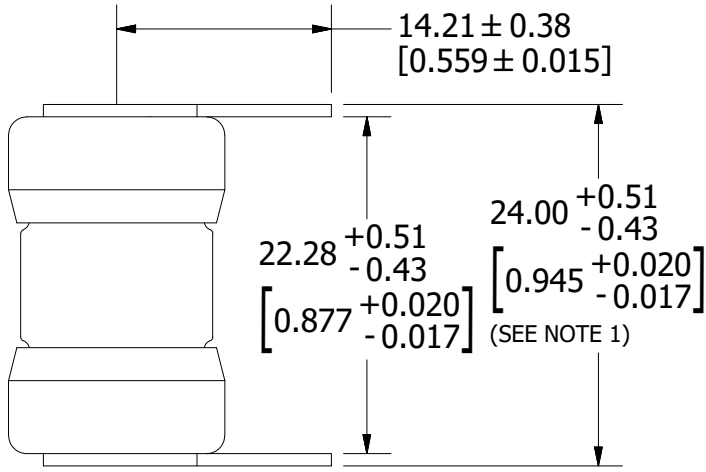


REVISION		
REV	DATE	DESCRIPTION
H	10/20/20	522885ECP/D - REDRAW IN INVENTOR, ADD METRIC DIMENSIONS MRY



1.32  
[0.052]  
REF

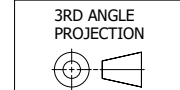
**PAD LAYOUT**

<S>	CRITICAL CHARACTERISTIC FOR PART SAFETY/COMPLIANCE
●	DENOTES CRITICAL CHARACTERISTICS.
CPK	DENOTES CPK DIMENSIONS, -MINIMUM CPK VALUE
⬡	DENOTES A CHARACTERISTIC THAT PROVIDES AN INDICATION OF PROCESS PERFORMANCE. PROCEDURE FOR MEASUREMENT AND TRACKING TO BE DEFINED IN LITTELFUSE INSPECTION INSTRUCTIONS.
CP	DENOTES CP DIMENSIONS, -MINIMUM CP VALUE MUST BE WITHIN THE DIMENSIONAL LIMITATIONS SHOWN ON DRAWING AND INITIALLY LOCATED TO ALLOW FOR MAXIMUM TOOL LIFE.

**A**

MATL SPEC		FINISH	
DRW myork	DATE 9/22/2020	SCALE NTS	FINISH GOOD WT GRAMS/PIECE

UNLESS OTHERWISE SPECIFIED, DIMENSIONS ARE IN MILLIMETERS, DIMENSIONS IN BRACKETS [ ] ARE INCHES DIMENSIONING AND DO NOT INCLUDE PLATING. TOLERANCING TO BE INTERPRETED IN ACCORDANCE WITH ANSI Y14.5M-1994



**TITLE** TLS-LS OUTLINE & PAD LAYOUT

 CHICAGO, ILLINOIS 60631	REVISION	DRWG NO.	SHEET 1 OF 1
	H	OL-0TLS000LS	

**NOTE:**  
1. MEASUREMENT TAKEN AT END OF TERMINALS.

**LEAD-FREE SOLDERING PROFILE:**  
PRE-HEAT: ABOVE 130°C FOR 75 SECONDS MAX  
REFLOW: 278°C FOR 8 SECONDS MAX  
TIME: 250 SECONDS MAX.  
MAX. TEMP: 280°C