

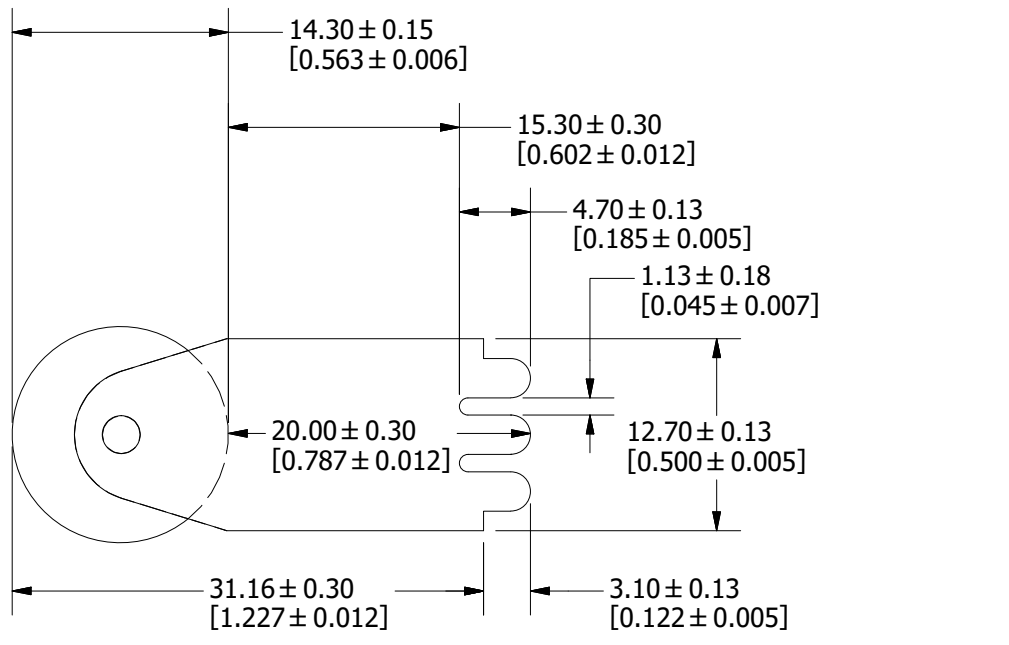
REVISION		
REV	DATE	DESCRIPTION
A	4/17/18	519174GCP - RELEASE MRY
B	11/19/20	523066ECP/B - UPDATE DIMENSIONS MRY

NOTE:
1. MEASUREMENT TAKEN AT END OF TERMINALS.

LEAD FREE SOLDERING PROFILE:

PRE-HEAT: ABOVE 130°C FOR 75 SECONDS MAX
 REFLOW: 278°C FOR 8 SECONDS MAX
 TIME: 250 SECONDS MAX.
 MAX TEMP: 280°C

PAD LAYOUT

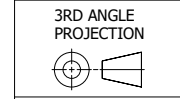


●	DENOTES CRITICAL CHARACTERISTICS.
CPK	DENOTES CPK DIMENSIONS, -MINIMUM CPK VALUE
⊠	DENOTES A CHARACTERISTIC THAT PROVIDES AN INDICATION OF PROCESS PERFORMANCE. PROCEDURE FOR MEASUREMENT AND TRACKING TO BE DEFINED IN LITTELFUSE INSPECTION INSTRUCTIONS.
CP	DENOTES CP DIMENSIONS, -MINIMUM CP VALUE MUST BE WITHIN THE DIMENSIONAL LIMITATIONS SHOWN ON DRAWING AND INITIALLY LOCATED TO ALLOW FOR MAXIMUM TOOL LIFE.

A

MATL SPEC		FINISH	
DRW myork	DATE 4/4/2018	SCALE NTS	FINISH GOOD WT GRAMS/PIECE

UNLESS OTHERWISE SPECIFIED, DIMENSIONS ARE IN MILLIMETERS, DIMENSIONS IN BRACKETS [] ARE INCHES DIMENSIONING AND DO NOT INCLUDE PLATING. TOLERANCING TO BE INTERPRETED IN ACCORDANCE WITH ANSI Y14.5M-1994



TITLE	TLS-SLSA OUTLINE & PAD LAYOUT
--------------	-------------------------------

 CHICAGO, ILLINOIS 60631	REVISION	DRWG NO.	SHEET 1 OF 1
	B	OL-0TLS000SLSA	