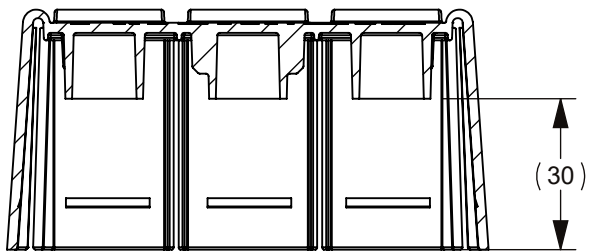
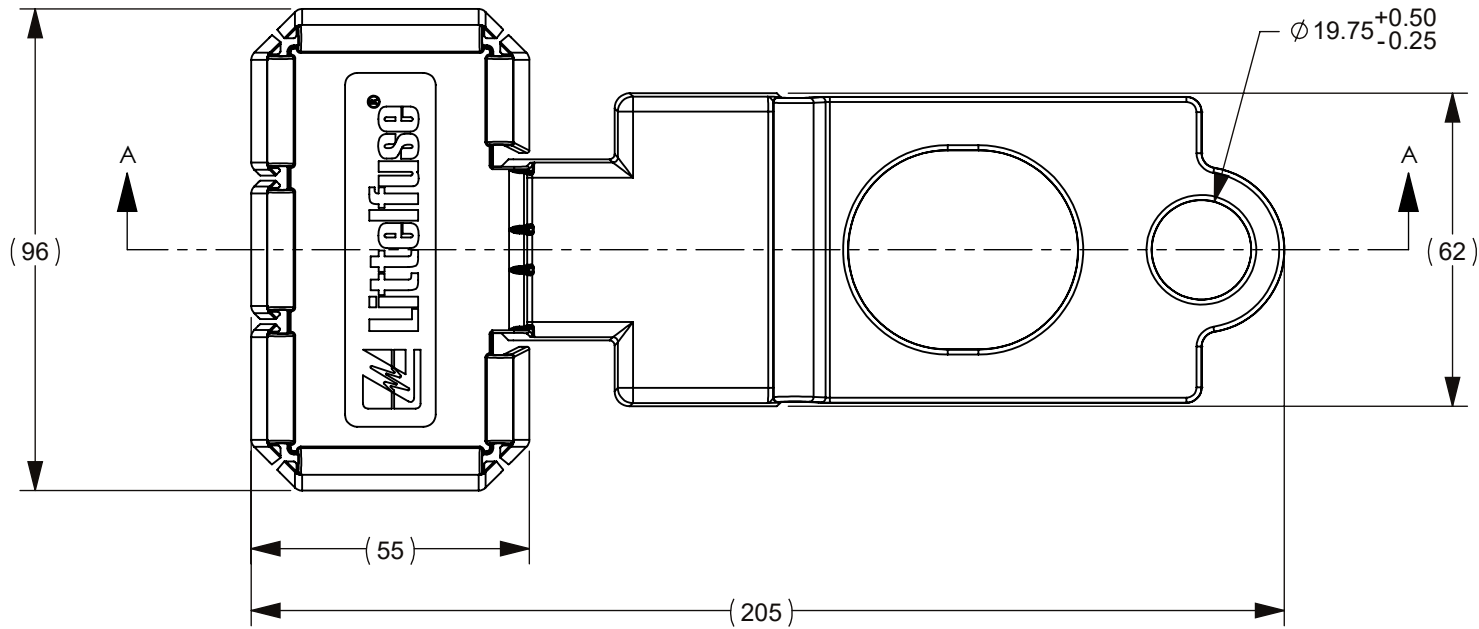


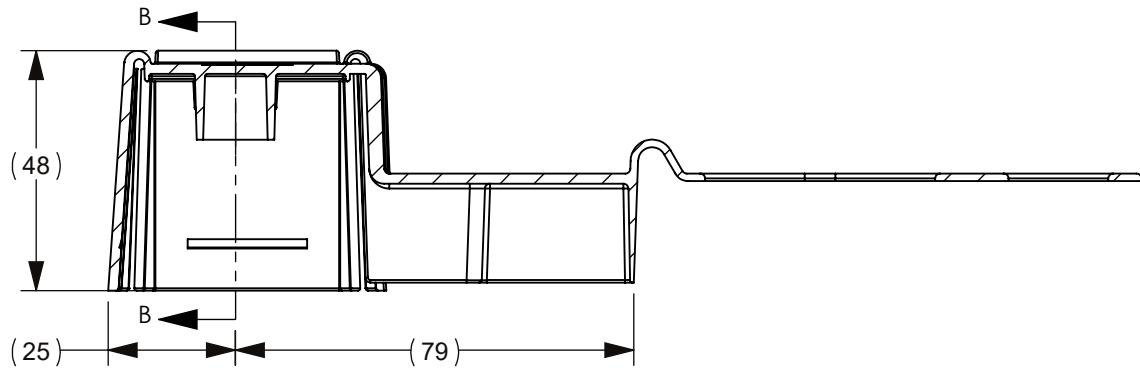
THIS DRAWING AND THE INFORMATION CONTAINED WITHIN IT ARE CONFIDENTIAL AND MAY NOT BE COPIED OR DISCLOSED WITHOUT THE WRITTEN PERMISSION OF LITTELFUSE.

NOTES

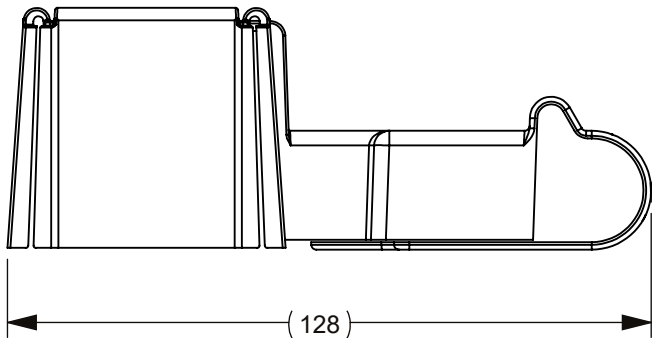
1. OPERATING TEMPERATURE: -40° TO 125°C
2. MATERIAL: TPV
3. COLOR: RED



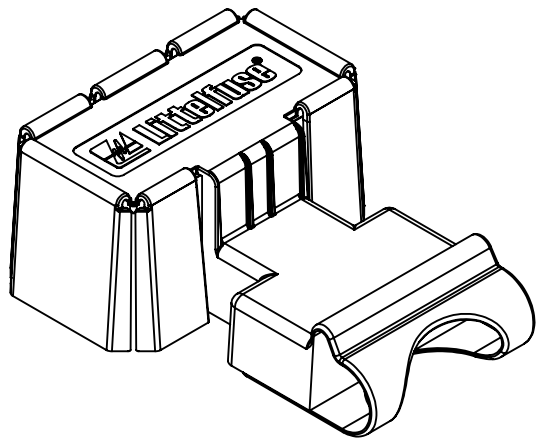
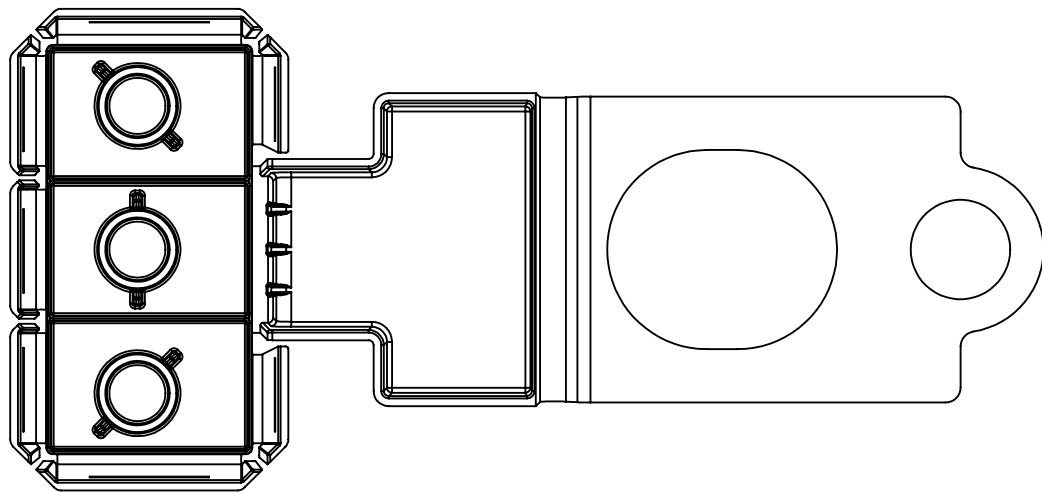
SECTION B-B
SCALE 1 : 1.5



SECTION A-A
SCALE 1 : 1.5


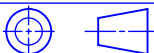


AS ASSEMBLED
LENGTH DEPENDENT ON CABLE
SIZE USED IN ASSEMBLY



REVISIONS

ZONE	REV.	DESCRIPTION	DATE	APPROVED
	A	INITIAL RELEASE GCF 522593	7/7/2020	L ARGIL

INTERPRET DRAWING TO ANSI/ASME Y14.5-1994.					
●	FIT/ FUNCTION CRITICAL CHARACTERISTICS SYMBOL				
<S>	SAFETY/ COMPLIANCE CRITICAL CHARACTERISTICS SYMBOL				
CPK	DENOTES CPK DIMENSIONS MINIMUM CPK VALUE				
ST	DENOTES A CHARACTERISTIC THAT PROVIDES AN INDICATION OF PROCESS PERFORMANCE.PROCEDURE FOR MEASUREMENTAND TRACKINGTO BE DEFINED IN LITTELFUSE INSPECTION INSTRUCTIONS				
CP	DENOTES CP DIMENSIONS, -MINIMUM CP VALUE MUST BE WITHIN THE DIMENSIONAL LIMITATIONS SHOWN ON DRAWING AND INITIALLY LOCATED TO ALLOW FOR MAXIMUM TOOL LIFE				
DIMENSION; MM TOLERANCES UNLESS OTHERWISE SPECIFIED ONE PLACE DECIMAL ± 0.5 THREE PLACES DECIMAL ± 0.100 TWO PLACES DECIMAL ± 0.20 ANGULAR ± 2°					
	NAME	DATE	 Littelfuse® Expertise Applied Answers Delivered		
DRAWN	L.VOGL	07/07/2020			
CHECKED	-	-			
	-	-			
	-	-	TITLE Cover - Zcase Fuse Holder		
FORM NO: CVP-PE40-0004 REV A					
THIRD ANGLE PROJECTION					
			SIZE B	DWG. NO. OL-901-325	REV. A
DO NOT SCALE DRAWING					
SCALE 1:2			SHEET 1 OF 1		