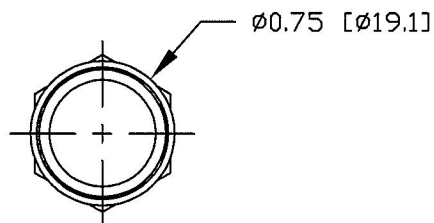


Ø0.64 [Ø16.2]

MOUNTING HOLE

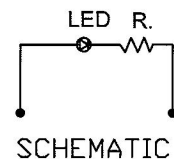


Ø0.75 [Ø19.1]

0.51 [13.0]

0.38 [9.6]

1.07 [27.1]



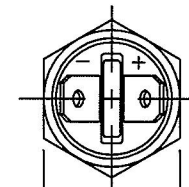
LENS & LED, SEE CHART

LOCKWASHER

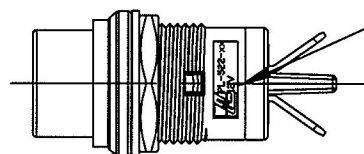
HEX NUT, M16 × P1.0, NICKEL PLATED

HOUSING, PLASTIC, BLACK

TERMINAL, BRASS, NICKEL PLATED, 2 PL



0.71 [18.0]



LITTELFUSE LOGO, PART
NUMBER & VOLTAGE

NOTES:

1. POLARITY SENSITIVE
2. RATING: 12Vdc
3. ILLUMINATION: 500 LUX

PL-522-RC	RED
PL-522-GC	GREEN
PL-522-AC	AMBER
PT NO	LENS & LED COLOR

Tolerances Unless otherwise specifically noted, the following are default tolerances;

2-places **3-places** **Angular**
+/- 0.02" **+/- 0.005"** **+/- 1°**

Metric: Shown in [] refers to equivalent English Dim Tol

"REF." or an Asterisk (*) = Non-Toleranced Reference Dimension, shown for clarification purposes only.

NOTE: All tolerances are Non-Cumulative.

PROPRIETARY INFORMATION

This Engineering Drawing, and the information contained herein, is proprietary to Cole Hersee Company and may not be disclosed, re-produced, or in any other way transferred or communicated to any other party without the express written consent of an authorized representative of Cole Hersee Company.

Special Characteristics:



Critical Characteristic, relating to Safety and/or Regulatory Compliance



Significant Characteristic relating to Process Control



Control Dimension relating to Form - Fit - Function as defined by Cole Hersee Company and/or the Customer



Cole Hersee Co.

20 Old Colony Ave., South Boston, MA, 02127
Phn: 617-268-2100 Web: www.colehersee.com

Description:

PILOT LIGHT, LED

**Drawing /
Part No.:**

PL-522

Current Rev.

B

FORM CHT-6 (2/07)

Used On
or Ref.: **EX28911**

Scale: 1:1

**Drawn
BY: DPS**

**Date
Drawn: 9/30/11**

Pg. 1 of 1