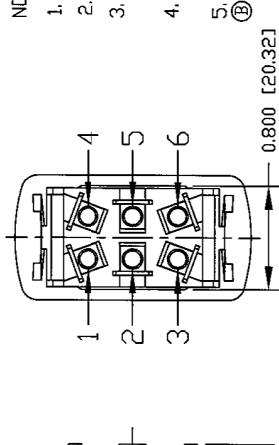


Revision Control Record		
Rev.	Description of Change	Date
A	RELEASE DRAWINGS	09/08/04
B	ADDED NEW PARTS: OLD PARTS	09/12/05
C	MODIFIED	09/08/09
	ADDED NEW PARTS: OLD PARTS	10/29/09
	MODIFIED	01/12/10

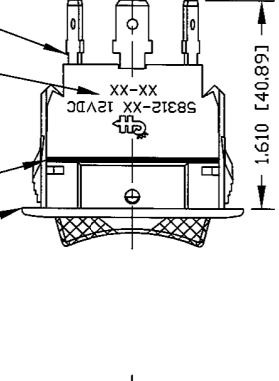
INK STAMP COLE HERSEE LOGO, DATE CODE & PART NUMBER

TERMINALS, MALE, BRASS, NICKEL PLATED 0.250 [6.35] WIDE



GASKET SEAL

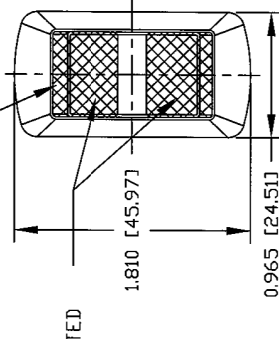
BEZEL, PLASTIC, BLACK



ROCKER, PLASTIC, COLOR CHARTED

ROCKER, PLASTIC, COLOR CHARTED

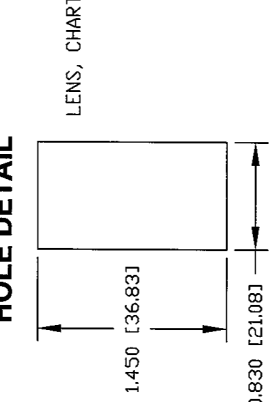
ROCKER, PLASTIC, COLOR CHARTED



MOUNTING HOLE DETAIL

1.450 [36.83]

0.830 [21.08]



NOTES:

- ALL DIMENSIONS ARE REFERENCE ONLY
- CONTACT RATING: 25 AMPS @ 12V DC
- SWITCH FITS IN 0.093 [2.36] THRU 0.187 [4.75] THICK PANEL
- ALL SWITCHES ARE SEALED FOR WEATHER RESISTANCE TO IP66.
- FOR PILOT LIGHT TYPE, SEE LAMP CHART.

⊗ ALL LED LAMPS TO BE OF "SUPER BRIGHT" INTENSITY UNLESS NOTED OTHERWISE.

ROCKER POSITIONS		IMPRINTING LOCATION							LENS LOCATION			
POSITION A	POSITION B	POSITION C	LOCATION D	LOCATION E	LOCATION F	LOCATION G	LOCATION H	LOCATION I	LOCATION J	LOCATION K	LOCATION L	LOCATION M

LENS COLORS
AMBER
BLUE
GREEN
RED
CLEAR

ROCKER COLORS
CHARTED

IMPRINT COLORS
WHITE

LAMP VOLTAGE
12V DC

**PILOT LAMP SCHEMATIC LAMP LEADS MAY INCLUDE EXTERNAL JUMPERS. ALL SCHEMATICS ASSUME #2 TERMINAL IS B+**

**REGULATORY INFORMATION:** This Regulatory Drawing and the information contained herein, is proprietary to Cole Hersee Company and may not be disclosed, reproduced, or in any other manner used for any purpose other than that intended without express written consent of an authorized representative of Cole Hersee Company.

**REGULATORY CONTROL:** It is the responsibility of the individual using this drawing to ensure that the noted design revision (Revision Drawing) is used for all manufacturing and assembly activities. This is a NON-CONTROLLED DOCUMENT unless otherwise specifically noted.

**DO NOT SCALE:** Dimensional variation may occur during printing / reproduction.

**USED ON:** EX-28005 **Scale:** 1:1 **Drawn By:** G.A. **Date:** 3/24/04 **Engineer:** G.A. **Page 1 of 4**

**REGULATORY CHARACTERISTICS:**

- Critical Characteristics, relating to Safety and Regulatory Compliance
- Significant Characteristics relating to Process Control (SPC)
- Control Dimension relating to Form - Fit - Function as defined by Cole Hersee Company and/or the "Special" does not alter the requirement that ALL specified dimensions & tolerances must be met

**REGULATORY CONTROL:** It is the responsibility of the individual using this drawing to ensure that the noted design revision (Revision Drawing) is used for all manufacturing and assembly activities. This is a NON-CONTROLLED DOCUMENT unless otherwise specifically noted.

**DO NOT SCALE:** Dimensional variation may occur during printing / reproduction.

**USED ON:** EX-28005 **Scale:** 1:1 **Drawn By:** G.A. **Date:** 3/24/04 **Engineer:** G.A. **Page 1 of 4**

**REGULATORY CHARACTERISTICS:**

- Critical Characteristics, relating to Safety and Regulatory Compliance
- Significant Characteristics relating to Process Control (SPC)
- Control Dimension relating to Form - Fit - Function as defined by Cole Hersee Company and/or the "Special" does not alter the requirement that ALL specified dimensions & tolerances must be met

**REGULATORY CONTROL:** It is the responsibility of the individual using this drawing to ensure that the noted design revision (Revision Drawing) is used for all manufacturing and assembly activities. This is a NON-CONTROLLED DOCUMENT unless otherwise specifically noted.

**DO NOT SCALE:** Dimensional variation may occur during printing / reproduction.

**USED ON:** EX-28005 **Scale:** 1:1 **Drawn By:** G.A. **Date:** 3/24/04 **Engineer:** G.A. **Page 1 of 4**

**REGULATORY CHARACTERISTICS:**

- Critical Characteristics, relating to Safety and Regulatory Compliance
- Significant Characteristics relating to Process Control (SPC)
- Control Dimension relating to Form - Fit - Function as defined by Cole Hersee Company and/or the "Special" does not alter the requirement that ALL specified dimensions & tolerances must be met

**REGULATORY CONTROL:** It is the responsibility of the individual using this drawing to ensure that the noted design revision (Revision Drawing) is used for all manufacturing and assembly activities. This is a NON-CONTROLLED DOCUMENT unless otherwise specifically noted.

**DO NOT SCALE:** Dimensional variation may occur during printing / reproduction.

**USED ON:** EX-28005 **Scale:** 1:1 **Drawn By:** G.A. **Date:** 3/24/04 **Engineer:** G.A. **Page 1 of 4**

**REGULATORY CHARACTERISTICS:**

- Critical Characteristics, relating to Safety and Regulatory Compliance
- Significant Characteristics relating to Process Control (SPC)
- Control Dimension relating to Form - Fit - Function as defined by Cole Hersee Company and/or the "Special" does not alter the requirement that ALL specified dimensions & tolerances must be met

**REGULATORY CONTROL:** It is the responsibility of the individual using this drawing to ensure that the noted design revision (Revision Drawing) is used for all manufacturing and assembly activities. This is a NON-CONTROLLED DOCUMENT unless otherwise specifically noted.

**DO NOT SCALE:** Dimensional variation may occur during printing / reproduction.

**USED ON:** EX-28005 **Scale:** 1:1 **Drawn By:** G.A. **Date:** 3/24/04 **Engineer:** G.A. **Page 1 of 4**

**REGULATORY CHARACTERISTICS:**

- Critical Characteristics, relating to Safety and Regulatory Compliance
- Significant Characteristics relating to Process Control (SPC)
- Control Dimension relating to Form - Fit - Function as defined by Cole Hersee Company and/or the "Special" does not alter the requirement that ALL specified dimensions & tolerances must be met

**REGULATORY CONTROL:** It is the responsibility of the individual using this drawing to ensure that the noted design revision (Revision Drawing) is used for all manufacturing and assembly activities. This is a NON-CONTROLLED DOCUMENT unless otherwise specifically noted.

**DO NOT SCALE:** Dimensional variation may occur during printing / reproduction.

**USED ON:** EX-28005 **Scale:** 1:1 **Drawn By:** G.A. **Date:** 3/24/04 **Engineer:** G.A. **Page 1 of 4**

**REGULATORY CHARACTERISTICS:**

- Critical Characteristics, relating to Safety and Regulatory Compliance
- Significant Characteristics relating to Process Control (SPC)
- Control Dimension relating to Form - Fit - Function as defined by Cole Hersee Company and/or the "Special" does not alter the requirement that ALL specified dimensions & tolerances must be met

**REGULATORY CONTROL:** It is the responsibility of the individual using this drawing to ensure that the noted design revision (Revision Drawing) is used for all manufacturing and assembly activities. This is a NON-CONTROLLED DOCUMENT unless otherwise specifically noted.

**DO NOT SCALE:** Dimensional variation may occur during printing / reproduction.

**USED ON:** EX-28005 **Scale:** 1:1 **Drawn By:** G.A. **Date:** 3/24/04 **Engineer:** G.A. **Page 1 of 4**

**Cole Hersee Co.**  
20 Old Colony Ave., South Boston, MA, 02127  
Phn: 617-288-2100 Web: www.colehersee.com

**ROCKER SWITCH**  
Drawing / Part No.: 58312 CHART  
Current Rev. C