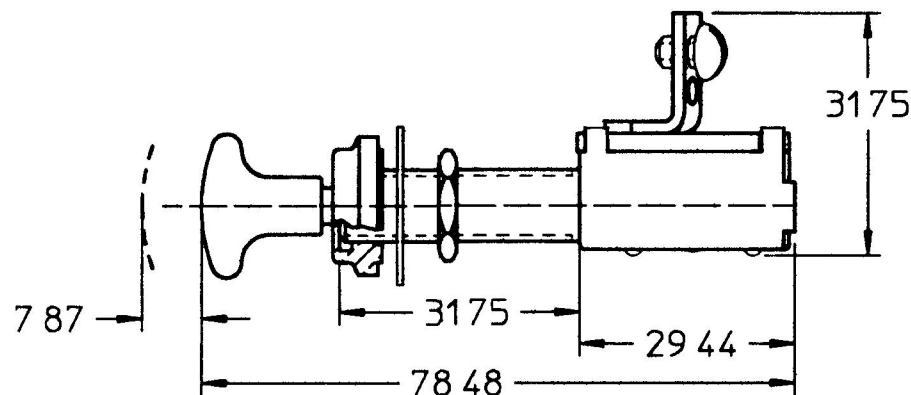
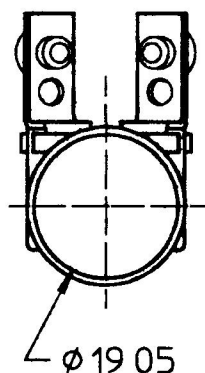
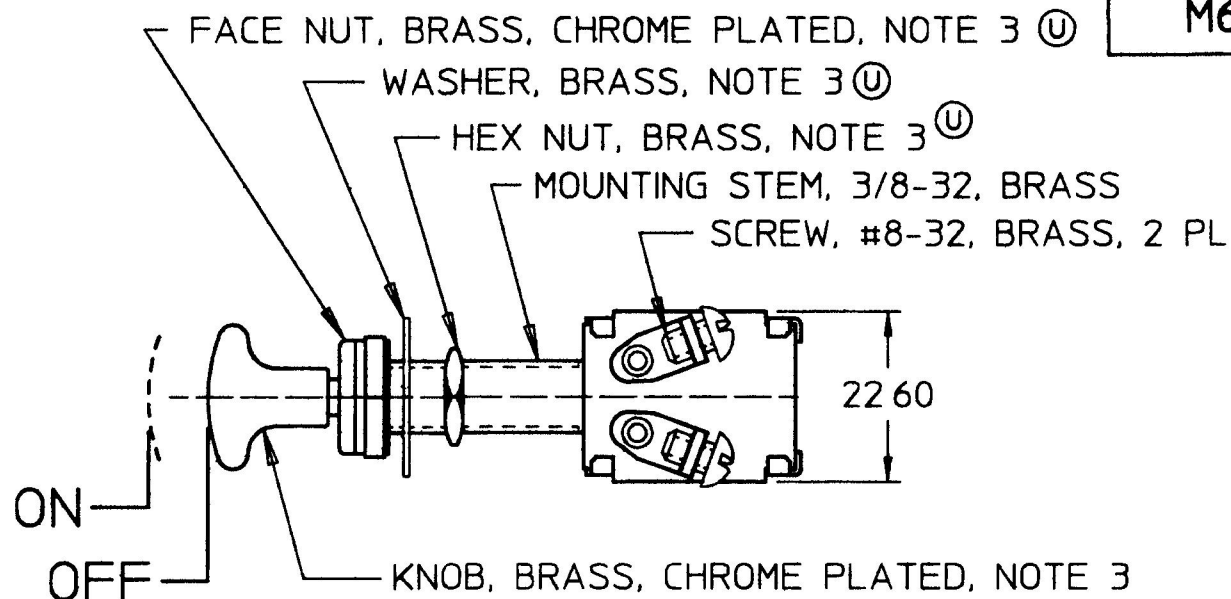


MM	IN
7 87 0	310
19 05 0	750
22 60 0	890
29 44 1	160
31 75 1	250
78 84 3	090

M628

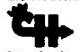


Ⓢ NOTES

- 1 ALL DIMENSIONS ARE REFERENCE ONLY
- 2 RATING 10 AMPS @ 12V DC
- 3 PARTS MAY BE ASSEMBLED OR

SUPPLIED IN A PLASTIC BAG DO NOT SCALE

METRIC

LET	WAS	DATE	BY	LET	WAS	DATE	BY	MATERIAL	DRAWN	CHK	APVD	SCALE	DATE DRAWN
									PLB	JMP		11	10/30/57
								FINISH	 Cole Hersee Co. 20 OLD COLONY AVENUE, BOSTON, MA, U.S.A. 02127				DATE BLUEPRINTED
				U	ECN #26936	7/29/97	AJS	TOLERANCES					
				T	PUT ON CAD	7/23/96	DPS	DECIMAL ± ANGLE ±	SWITCH, PUSH-PULL				M628