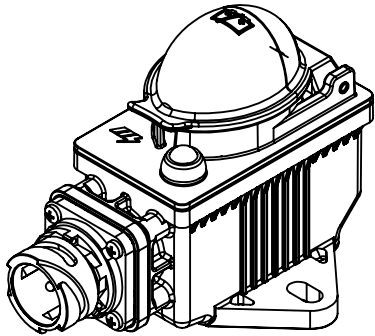
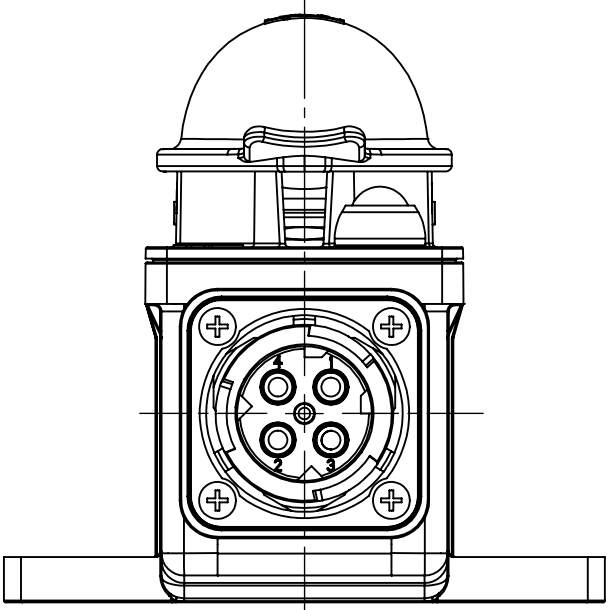
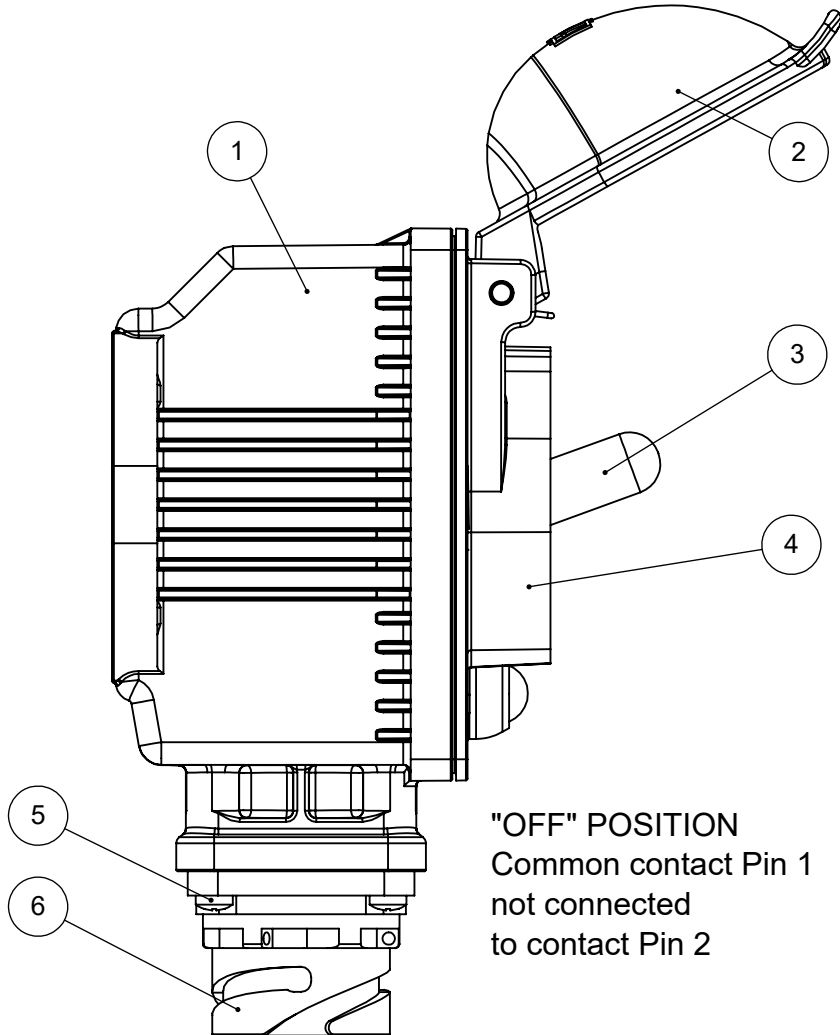
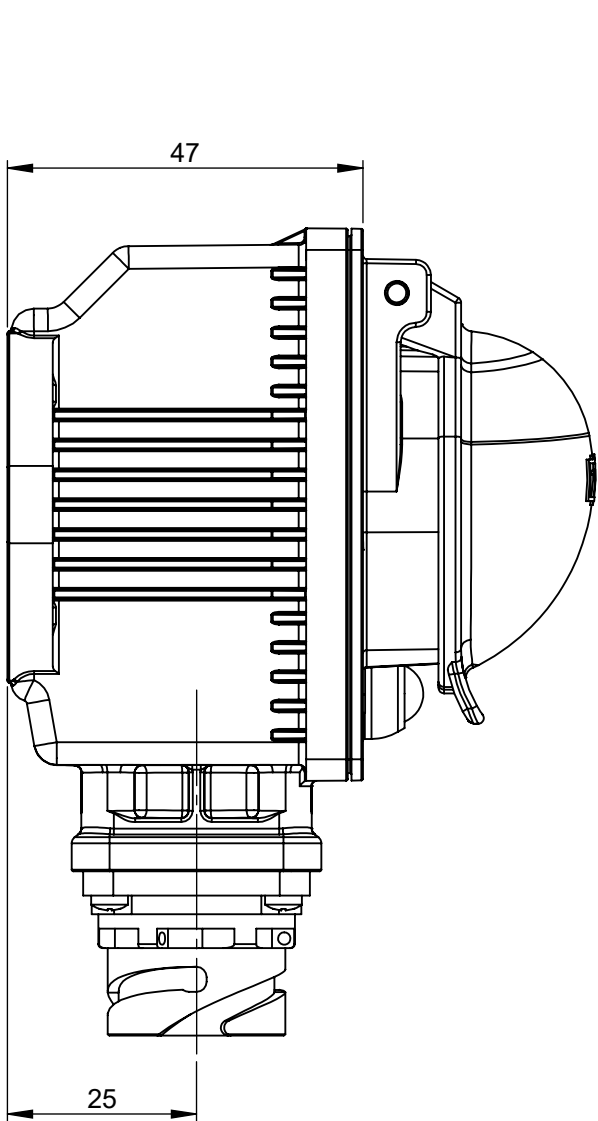
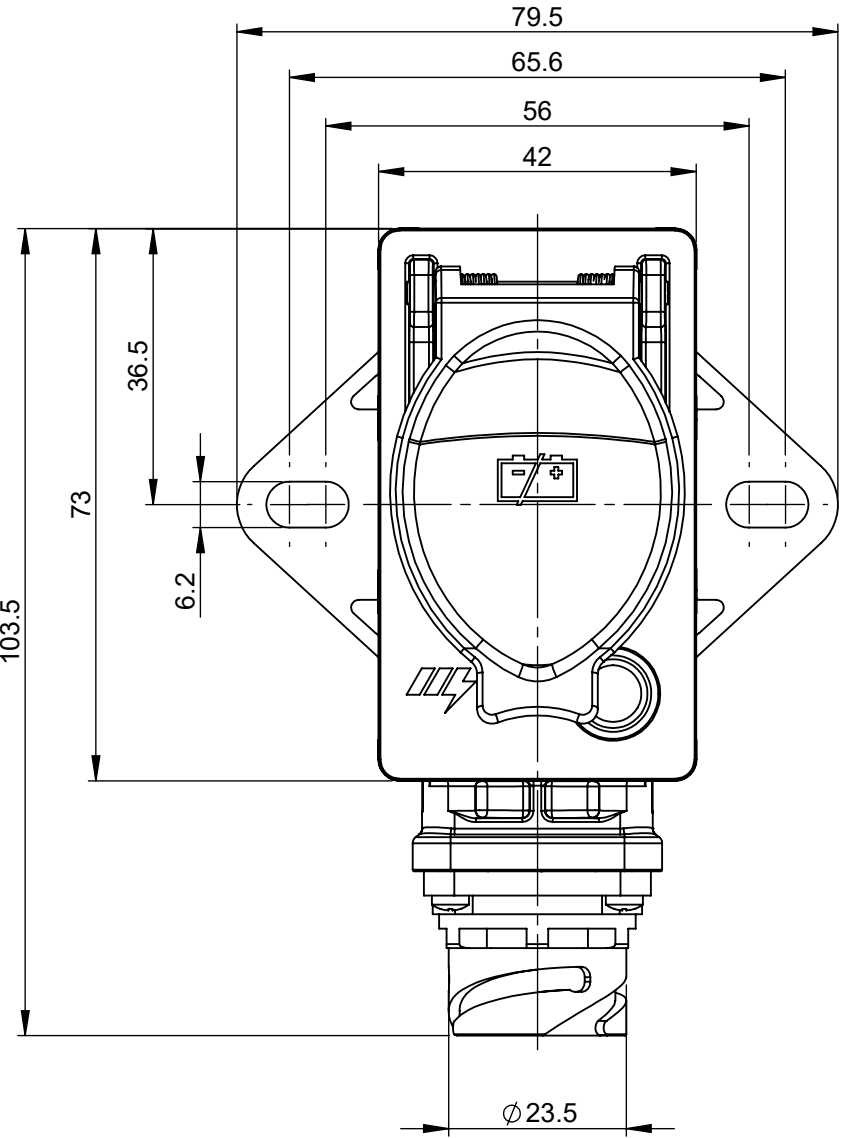


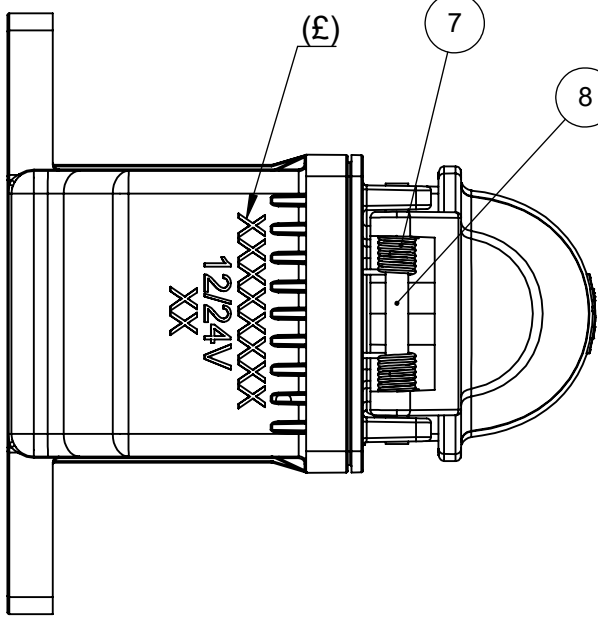
REVISIONS				
REV.	DESCRIPTION	DATE	DESIGNED	APPROVED
A	First issue of outline drawing	19-Jun-20	L.Dal Molin	M.Tinto



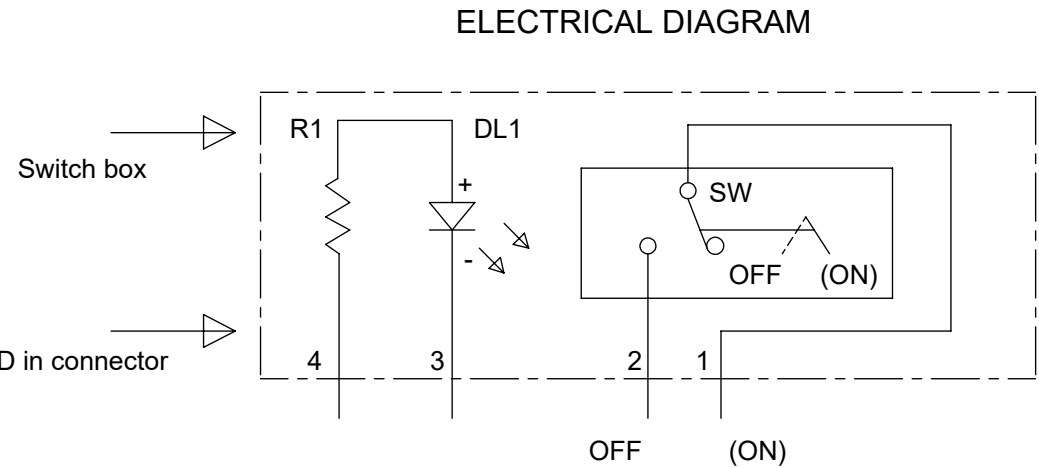
SCALE 1:2



"OFF" POSITION
Common contact Pin 1
not connected
to contact Pin 2



"(ON)" POSITION
Common contact Pin 1
connected
to contact Pin 2



PRESCRIPTIONS

- (£) The device have to be marked with product p/N, working nominal tension and manufacturing date
- It is recommended to fix the device to the structure by means of screws M6 and flat washer 6.4x12.5 by locking torque 8±2 Nm
- To assure the correct work of switch we recommend to operate it simulating an emergency situation once a month
- The functionality of the device is not influenced by the fitting orientation
- The "OFF" - "ON" instructions showed on the drawing are referred to the functions obtained when the device is connected to the battery switches

CHARACTERISTICS

- Nominal voltage: 12V or 24V
- Working current: 10A
- Vibrations resistance: - Frequency 10 ÷ 50 Hz
- Acceleration 150m/s²
- Number of electrical and mechanical cycles: 30.000
- Weight of the device: about 0.13 Kg

DOCUMENTO CORRELATO AL CERTIFICATO:
DOCUMENT CORRELATED TO THE CERTIFICATE:


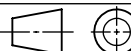
AR 17 ATEX 022X

Non sono ammesse modifiche
senza l' approvazione
della "Persona Autorizzata".
*No modify is allowed without the
"Authorized Person" approval.*

SAP drawing number:

Material and treatments:

8	Pin cover	Steel	1	EA
7	Spring for cover	Steel	1	EA
6	Body connector/F 4P	PBT	1	EA
5	Screw TCCIC 3x12	Steel	4	EA
4	Closing cover complete		1	EA
3	Momentary toggle switch w/ sealing boot		1	EA
2	Cover w/ dashed battery logo	Polyamide	1	EA
1	Box for switch	Polyamide	1	EA
POS.	DESCRIPTION	MATERIAL	Q.TY	U/M

DIMENSIONS AND TOLERANCES IN MILLIMETERS, DEFINED ACCORDING TO ISO 1101-2017.						
linear dimensions						
0,5 3	>3 6	>6 30	>30 120	>120 400	>400 1000	>1000 2000
±0,2	±0,3	±0,5	±0,8	±1,2	±2	±3
angle (for range of lengths)						
up to 10	>10 50	>50 120	>120 400	>400 1000	>1000 2000	>2000 4000
±1°30'	±1°	±0°30'	±0°15'	±0°15'	±0°15'	±0°15'
●	FIT/ FUNCTION CRITICAL CHARACTERISTICS SYMBOL					
<S>	SAFETY/ COMPLIANCE CRITICAL CHARACTERISTICS SYMBOL					
CPK	DENOTES CPK DIMENSIONS MINIMUM CPK VALUE					
ST	DENOTES A CHARACTERISTIC THAT PROVIDES AN INDICATION OF PROCESS PERFORMANCE PROCEDURE FOR MEASUREMENTAND TRACKINGTO BE DEFINED IN LITTELFUSE INSPECTION INSTRUCTIONS					
CP	DENOTES CP DIMENSIONS. -MINIMUM CP VALUE MUST BE WITHIN THE DIMENSIONAL LIMITATIONS SHOWN ON DRAWING AND INITIALLY LOCATED TO ALLOW FOR MAXIMUM TOOL LIFE					
NAME		DATE		 Expertise Applied Answers Delivered		
DRAWN	L. Dal Molin	19-Jun-20				
CHECKED	-	-				
-	-	-				
FORM NO.: CVP-PE40-0013 REV A				TITLE		
FIRST ANGLE PROJECTION				EXTERNAL SWITCH OFF-(ON) W/LED		
		SIZE: A2		DWG. NO. OL-00227073		OUTLINE REV. A
DO NOT SCALE DRAWING		SCALE 1:1		SHEET 1 OF 1		