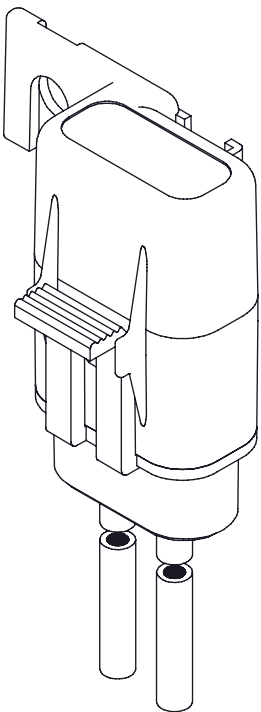
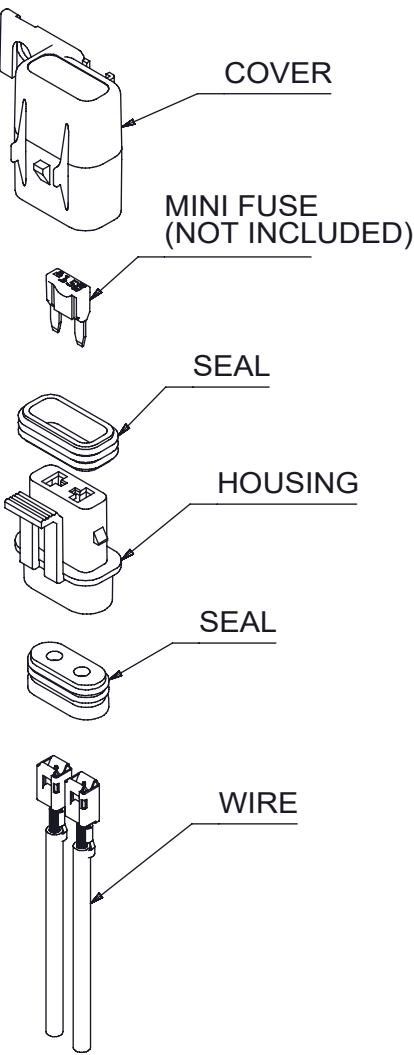
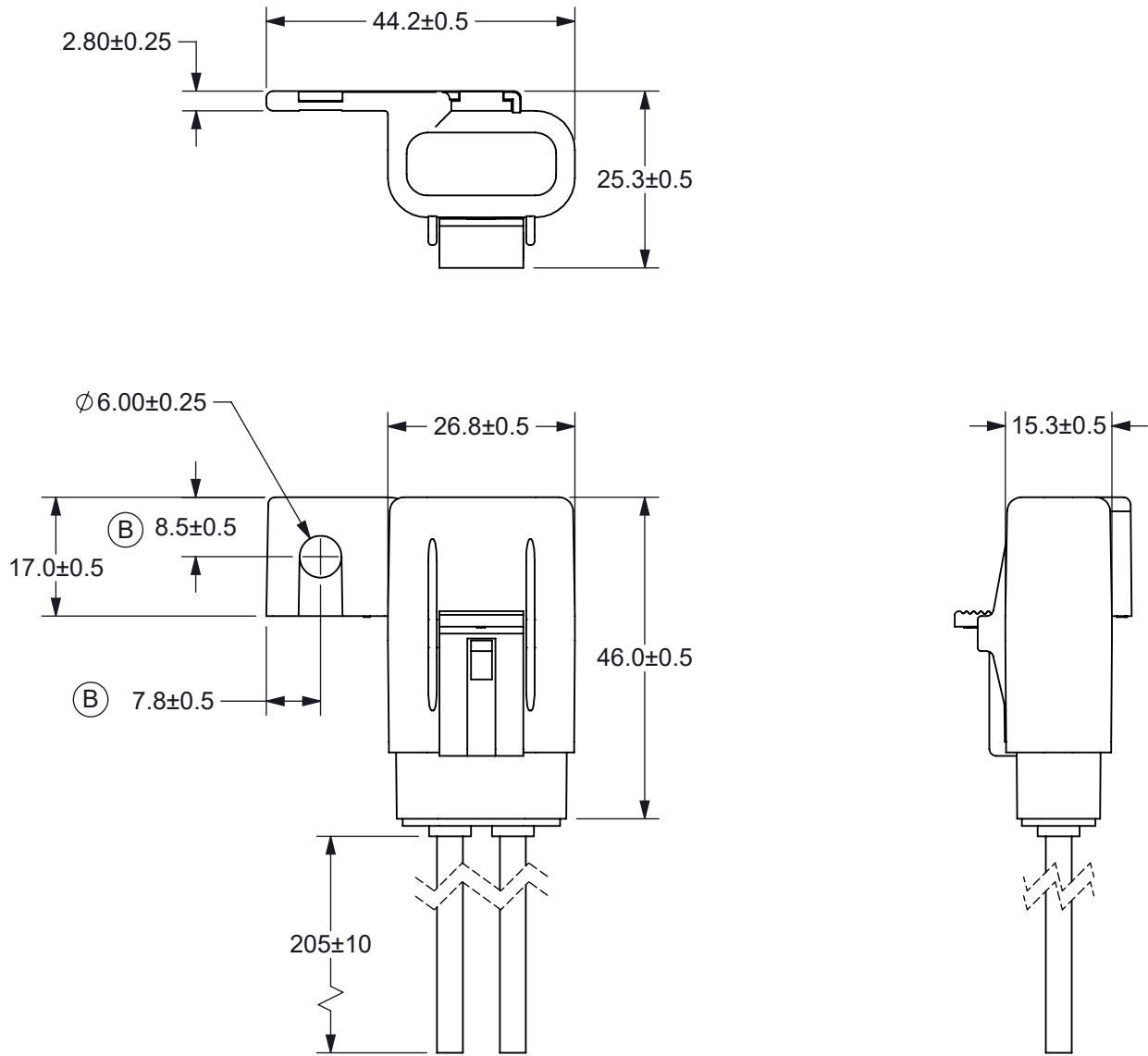


THIS DRAWING AND THE INFORMATION CONTAINED WITHIN IT ARE CONFIDENTIAL AND MAY NOT BE COPIED OR DISCLOSED WITHOUT THE WRITTEN PERMISSION OF LITTELFUSE.




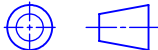
| REVISIONS | | | | |
|-----------|------------|---|------------|----------|
| REV. | CHANGE NO. | DESCRIPTION | DATE | APPROVED |
| A | 520748 | PRODUCTION RELEASE | 05/29/2019 | DGK |
| B | 521389 | ADDED TIN TO WIRE. ADDED HOLE DIMENSIONS. | 10/16/2019 | DGK |



NOTES:

- HOUSING AND COVER MATERIAL: BLACK PC
- SEAL MATERIAL: SILICONE
- WIRE: 12 AWG STRANDED COPPER, RED GXL WIRE, 125°C TEMPERATURE RATING, TINNED
- FOR USE WITH ISO 8820 TYPE 'F' FUSE (MINI FUSE).
- RATING: 30A MAXIMUM, 32Vdc
- FUSEHOLDER IS DUST TIGHT AND PROTECTED AGAINST IMMERSION, IP67 RATED.
- FUSE IS NOT INCLUDED.
- FUSEHOLDER IS RoHS COMPLIANT.

(B)

| | | | | | |
|---|--|------------|--|----------------------------|-----------|
| INTERPRET DRAWING TO ANSI/ASME Y14.5-1994. | | | | | |
|  | FIT/ FUNCTION CRITICAL CHARACTERISTICS SYMBOL | | | | |
| <S> | SAFETY/ COMPLIANCE CRITICAL CHARACTERISTICS SYMBOL | | | | |
| CPK | DENOTES CPK DIMENSIONS MINIMUM CPK VALUE | | | | |
|  | DENOTES A CHARACTERISTIC THAT PROVIDES AN INDICATION OF PROCESS PERFORMANCE.PROCEDURE FOR MEASUREMENTAND TRACKINGTO BE DEFINED IN LITTELFUSE INSPECTION INSTRUCTIONS | | | | |
| CP | DENOTES CP DIMENSIONS, -MINIMUM CP VALUE MUST BE WITHIN THE DIMENSIONAL LIMITATIONS SHOWN ON DRAWING AND INITIALLY LOCATED TO ALLOW FOR MAXIMUM TOOL LIFE | | | | |
| DIMENSION: MM TOLERANCES UNLESS OTHERWISE SPECIFIED ONE PLACE DECIMAL ± 0.5 THREE PLACES DECIMAL ± 0.100 TWO PLACES DECIMAL ± 0.20 ANGULAR ± 2° | | | | | |
| | NAME | DATE |  Littelfuse® Expertise Applied Answers Delivered | | |
| DRAWN | DGK | 05/29/2019 | | | |
| CHECKED | MS | 06/26/2019 | | | |
| | - | - | | | |
| | - | - | | | |
| FORM NO: CVP-PE40-0004 REV A | | | TITLE FUSEHOLDER, IN-LINE MINI 12 AWG GXL, SEALED | | |
| THIRD ANGLE PROJECTION | | | | | |
|  | | | | | |
| DO NOT SCALE DRAWING | | | SIZE B | DWG. NO. OL-FHMS200 | REV. B |
| SCALE 1:2 | | | SHEET 1 OF 1 | | |