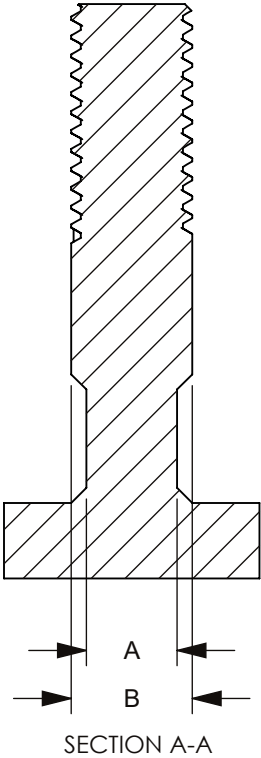
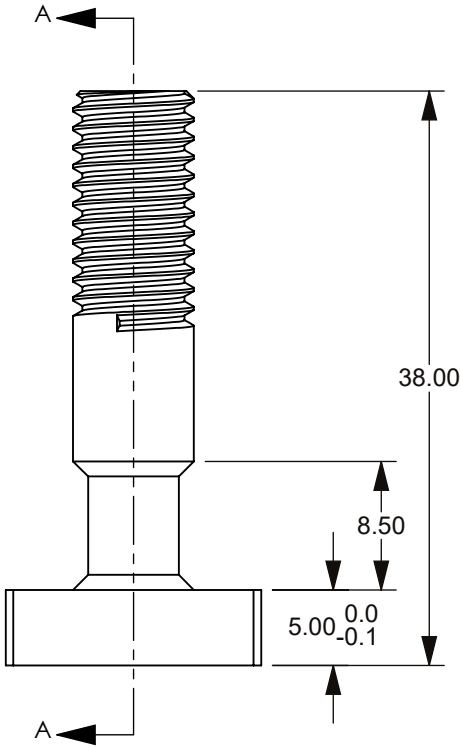
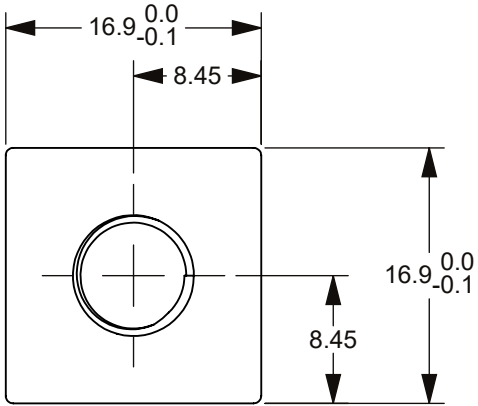


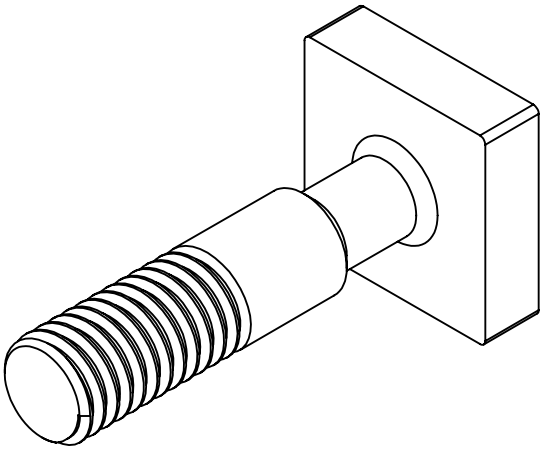
THIS DRAWING AND THE INFORMATION CONTAINED WITHIN IT ARE CONFIDENTIAL AND MAY NOT BE COPIED OR DISCLOSED WITHOUT THE WRITTEN PERMISSION OF LITTELFUSE.


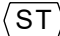

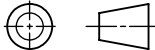
PART NUMBER	A	B	THREAD	THREAD LENGHT
908-066	6.0	7.8	M6X1.0	16.0
908-067	6.0	7.8	M8X1.25	16.0
908-068	8.0	9.8	M10X1.5	16.0



NOTES:
1. MATERIAL:STEEL, FINISH: PLATED

REVISIONS				
ZONE	REV.	DESCRIPTION	DATE	APPROVED
	A	PCO#5300103. INITIAL RELEASE. DSILVA.	10/4/2022	L.ARGIL



NO.		COMPONENT NO.		COMPONENT NAME				QTY		U	
TOLERANCES UNLESS OTHERWISE SPECIFIED (REF. ISO 2768-FH)											
.5 to 3	>3 to 6	>6 to 30	>30 to 120	>120 to 400							ANGLE
±0.05	±0.05	±0.10	±0.15	±0.20							NONE
DIMENSIONS ARE SHOWN IN MILLIMETERS. DIMENSIONS AND TOLERANCES ARE DEFINED ACCORDING TO ANSI/ASME Y14.5-1994.											
PER CH1-NPD20-0008 PROCEDURE	 FIT/ FUNCTION CRITICAL CHARACTERISTICS										
	<S> SAFETY/ COMPLIANCE CRITICAL CHARACTERISTICS SYMBOL										
	CPK DENOTES CPK DIMENSIONS MINIMUM CPK VALUE										
	 DENOTES A CHARACTERISTIC THAT PROVIDES AN INDICATION OF PROCESS PERFORMANCE.PROCEDURE FOR MEASUREMENTAND TRACKINGTO BE DEFINED IN LITTELFUSE INSPECTION INSTRUCTIONS										
	CP DENOTES CP DIMENSIONS, -MINIMUM CP VALUE MUST BE WITHIN THE DIMENSIONAL LIMITATIONS SHOWN ON DRAWING AND INITIALLY LOCATED TO ALLOW FOR MAXIMUM TOOL LIFE										
		NAME		DATE		<div>Littelfuse® Expertise Applied Answers Delivered</div> <div>TITLE</div> <div>STUD FOR ZCASE FUSE BOX</div>					
DRAWN		DSILVA		7/20/2022							
CHECKED		-		-							
		-		-							
		-		-							
FORM NO: CVP-PE40-0003 REV B											
THIRD ANGLE PROJECTION											
											
DO NOT SCALE DRAWING				SIZE B		DWG. NO. OUTLINE				REV. A	
				SCALE 2:1				OL-908-066			
								SHEET 1 OF 1			