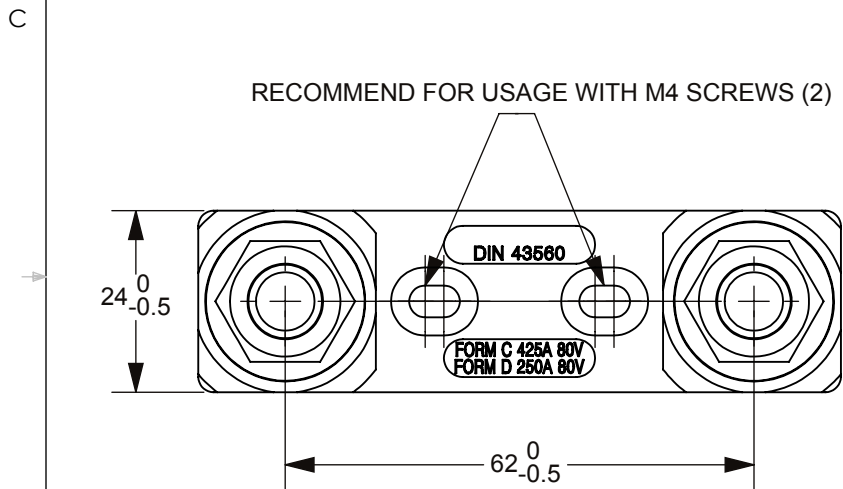
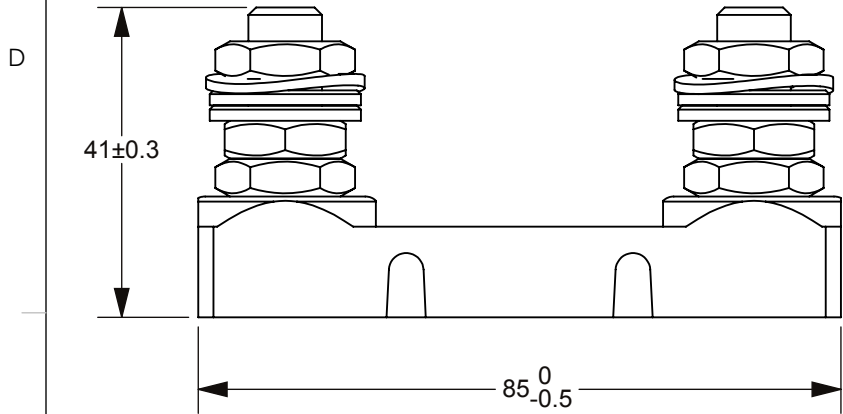
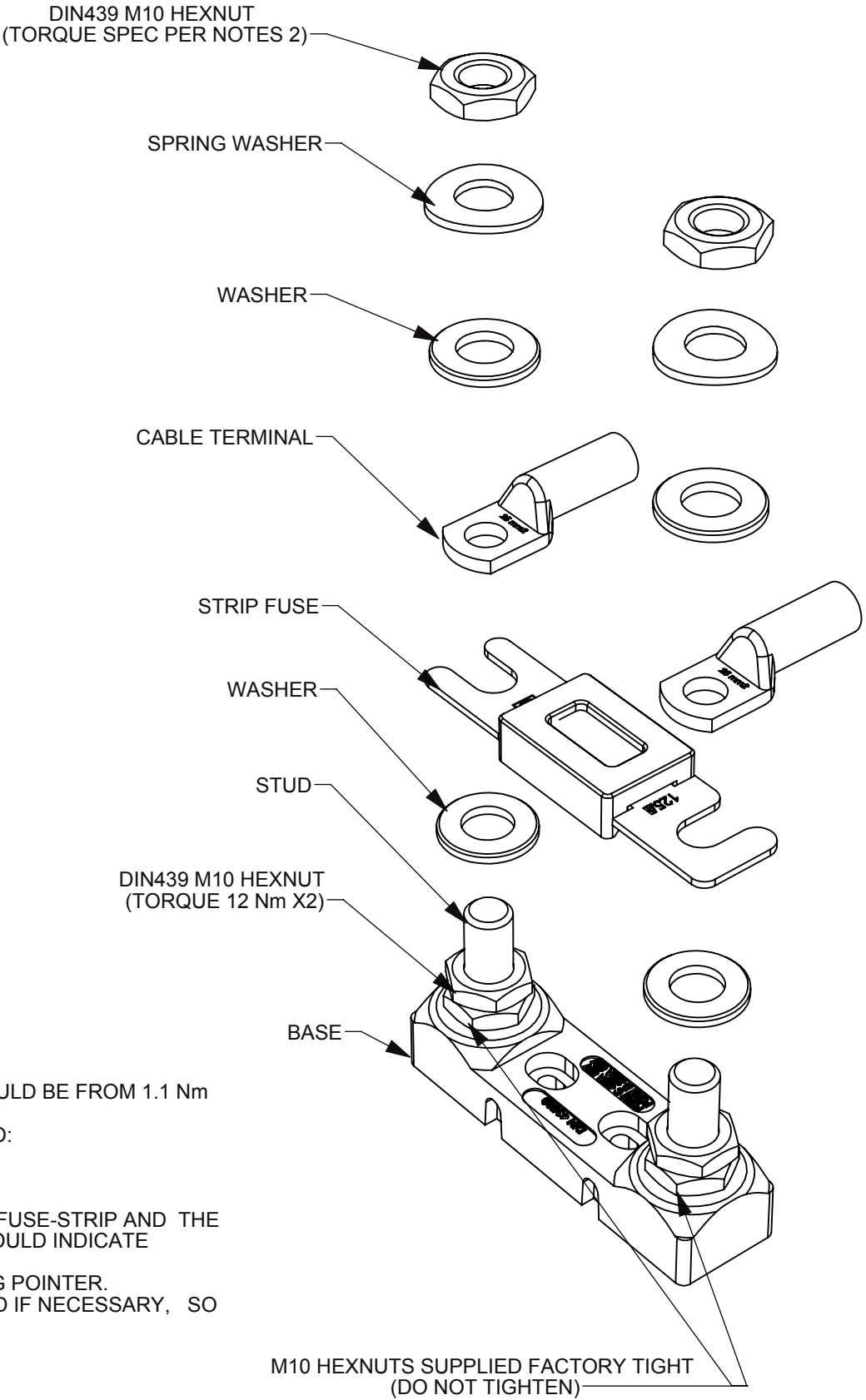





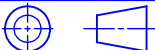
THIS DRAWING AND THE INFORMATION CONTAINED WITHIN IT ARE CONFIDENTIAL AND MAY NOT BE COPIED OR DISCLOSED WITHOUT THE WRITTEN PERMISSION OF LITTELFUSE.

REVISIONS					
ZONE	REV.	DESCRIPTION		DATE	APPROVED
	A	516426GCC-NEW RELEASE		F YUE	27/SEPT/2016
	B	ECO 518625 UPDATE TORQUE SPEC & NOTES & ASSEMBLY, REDRAW IN SOLIDWORKS		A HOANG	6/DEC/2017
					J THOMAS



- NOTES:
- THE M4 SCREWS WHEN ASSEMBLING THE FUSE HOLDER TO VEHICLES SHOULD BE FROM 1.1 Nm TO 5 Nm (MAXIMUM) PER ISO 898, PER BOLT STRENGTH MARKINGS.
 - THE MAXIMUM TORQUE OF THE FUSE-STRIP ON FUSE-HOLDER AMOUNTS TO:
35 A UP TO 63A: MAXIMUM 5Nm
80A UP TO 100A: MAXIMUM 8Nm
FROM 125A: MAXIMUM 10Nm
 - THESE TORQUES APPLY ONLY UNDER THE PREREQUISITE THAT BOTH THR FUSE-STRIP AND THE CABLE TERMINALS ARE SECURED AGAINST ROTATION. THE FUSE-STRIP SHOULD INDICATE AFTERWARDS NO VISIBLE DEFORMATIONS.
 - THE INDICATED VALUES WERE TAKEN WITH A TORQUE KEY WITH DRAGGING POINTER.
 - WHEN USING OTHER ASSEMBLY METHODS, THE TORQUE IS TO BE REDUCED IF NECESSARY, SO THAT NOT TO DEFORM THE FUSE-STRIP.
 - FOR ASSEMBLY DETAIL REFER TO INSTALLATION INSTRUCTION BULLETIN.



NO.	COMPONENT NO.	COMPONENT NAME	QTY/M	U/M	
INTERPRET DRAWING TO ANSI/ASME Y14.5-1994.					
	FIT/ FUNCTION CRITICAL CHARACTERISTICS SYMBOL				
<S>	SAFETY/ COMPLIANCE CRITICAL CHARACTERISTICS SYMBOL				
CPK	DENOTES CPK DIMENSIONS MINIMUM CPK VALUE				
	DENOTES A CHARACTERISTIC THAT PROVIDES AN INDICATION OF PROCESS PERFORMANCE.PROCEDURE FOR MEASUREMENTAND TRACKINGTO BE DEFINED IN LITTELFUSE INSPECTION INSTRUCTIONS				
CP	DENOTES CP DIMENSIONS, -MINIMUM CP VALUE MUST BE WITHIN THE DIMENSIONAL LIMITATIONS SHOWN ON DRAWING AND INITIALLY LOCATED TO ALLOW FOR MAXIMUM TOOL LIFE				
DIMENSION MM. TOLERANCES UNLESS OTHERWISE SPECIFIED ONE PLACE DECIMAL ± 0.5 THREE PLACES DECIMAL ± 0.100 TWO PLACES DECIMAL ± 0.20 ANGULAR ± 2°					
	NAME	DATE	 Littelfuse® Expertise Applied Answers Delivered		
DRAWN	A HOANG	6 DEC 2017			
CHECKED	A HOANG	6 DEC 2017			
	-	-			
	-	-			
	-	-	TITLE HOLDER FOR STRIP FUSE		
	-	-			
THIRD ANGLE PROJECTION					
DO NOT SCALE DRAWING			SIZE B	DWG. NO. OL 177.5731.0001	REV. B
SCALE 1:1			SHEET 1 OF 1		