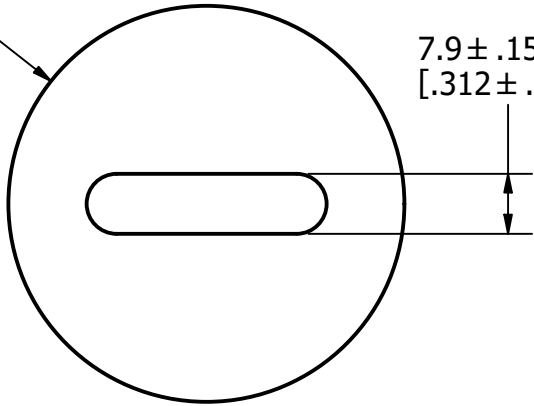
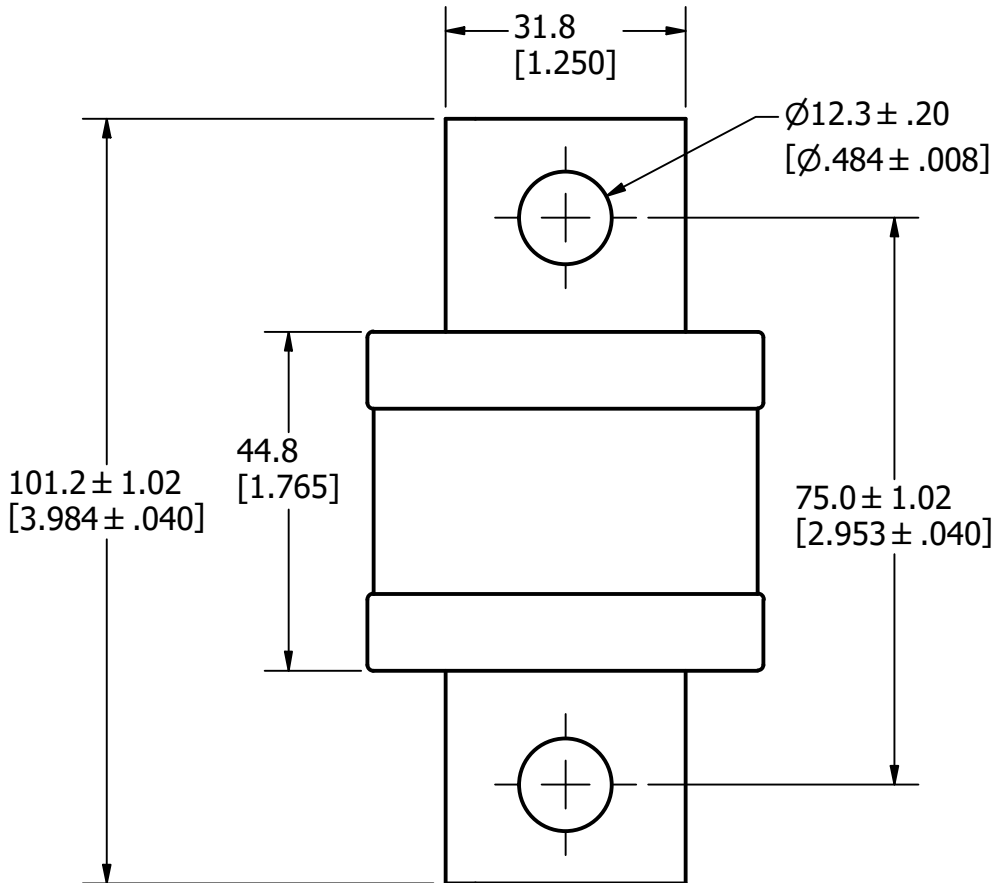


Ø52.4
[Ø2.062]



7.9 ± .15
[.312 ± .006]



101.2 ± 1.02
[3.984 ± .040]

44.8
[1.765]

31.8
[1.250]

Ø12.3 ± .20
[Ø.484 ± .008]

75.0 ± 1.02
[2.953 ± .040]

| REVISION | | |
|----------|--------|-------------------------|
| REV | DATE | DESCRIPTION |
| A | 8/9/22 | 525545GCP - RELEASE MRY |

APPROXIMATE SHIPPING WEIGHT: 1 FUSE / 0.85 LBS.

| 1 | NO | COMPONENT NO | DESCRIPTION | QTY/M | U/M |
|---|--|--------------|-------------------------------|------------------------|--------------|
| BILL OF MATERIAL | | | | | |
| <S> | CRITICAL CHARACTERISTIC FOR PART SAFETY/COMPLIANCE | | | | |
| ● | DENOTES CRITICAL CHARACTERISTICS. | | | | |
| CPK | DENOTES CPK DIMENSIONS, -MINIMUM CPK VALUE | | | | |
| ⊠ | DENOTES A CHARACTERISTIC THAT PROVIDES AN INDICATION OF PROCESS PERFORMANCE. PROCEDURE FOR MEASUREMENT AND TRACKING TO BE DEFINED IN LITTELFUSE INSPECTION INSTRUCTIONS. | | | | |
| CP | DENOTES CP DIMENSIONS, -MINIMUM CP VALUE MUST BE WITHIN THE DIMENSIONAL LIMITATIONS SHOWN ON DRAWING AND INITIALLY LOCATED TO ALLOW FOR MAXIMUM TOOL LIFE. | | | | |
| MATL SPEC | | | FINISH | | |
| DRW JMoler | DATE 8/5/2022 | SCALE NTS | FINISH GOOD WT GRAMS/PIECE | | |
| UNLESS OTHERWISE SPECIFIED, DIMENSIONS ARE IN MILLIMETERS, DIMENSIONS IN BRACKETS [] ARE INCHES DIMENSIONING AND DO NOT INCLUDE PLATING. TOLERANCING TO BE INTERPRETED IN ACCORDANCE WITH ANSI Y14.5M-1994 | | | | | |
| 3RD ANGLE PROJECTION | | | | | |
| TITLE JLLS 450-600A OUTLINE | | | | | |
| Littelfuse CHICAGO, ILLINOIS 60631 | | | REVISION A | DRWG NO. OL-JLLS600 | SHEET 1 OF 1 |

A