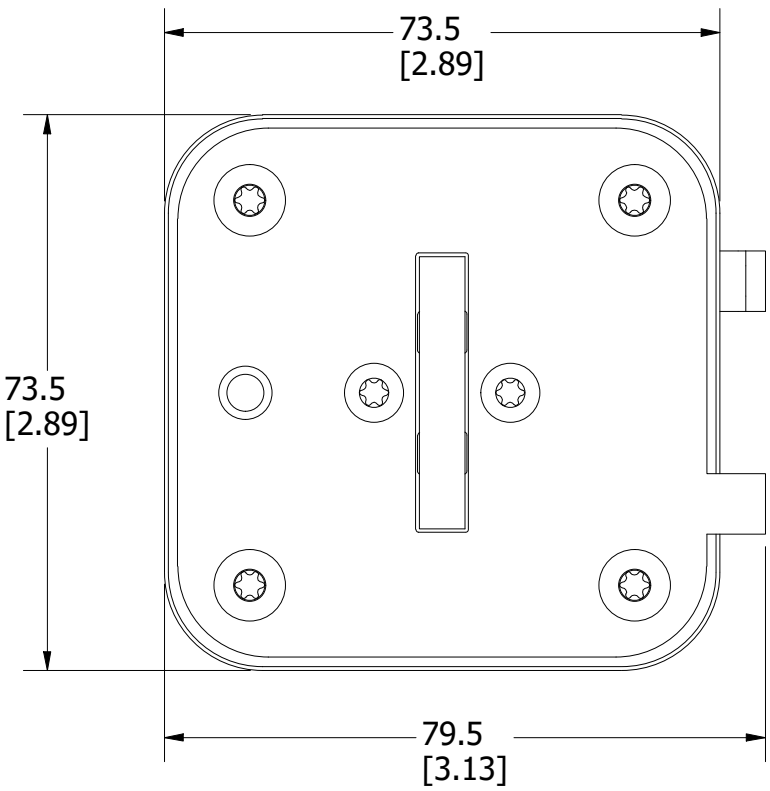
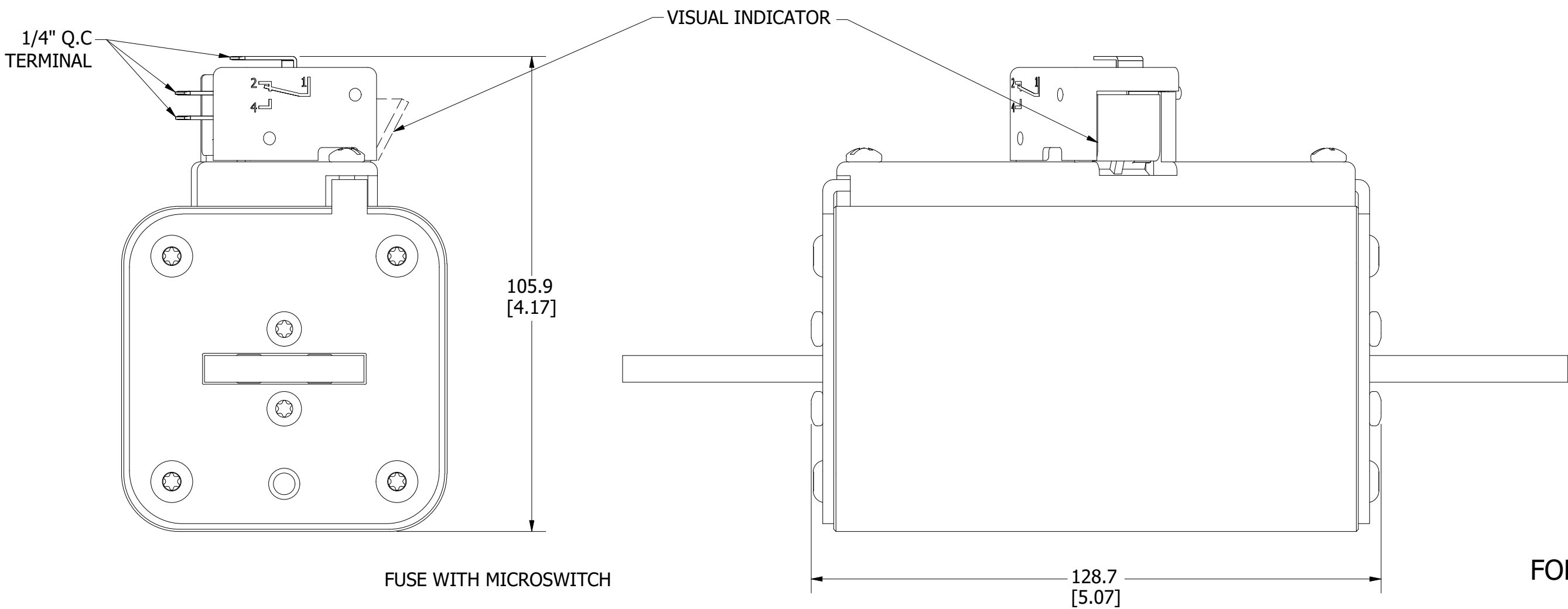
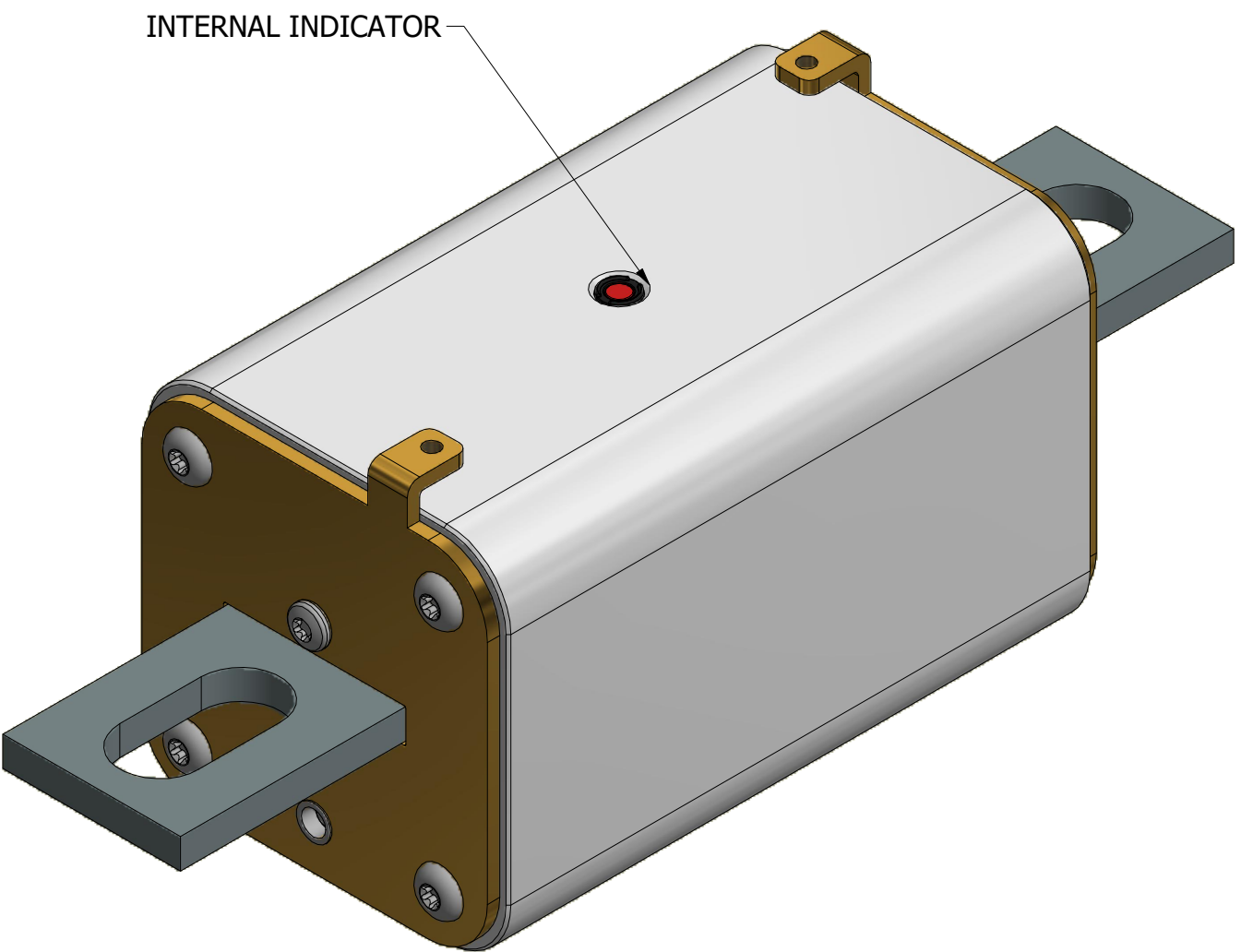
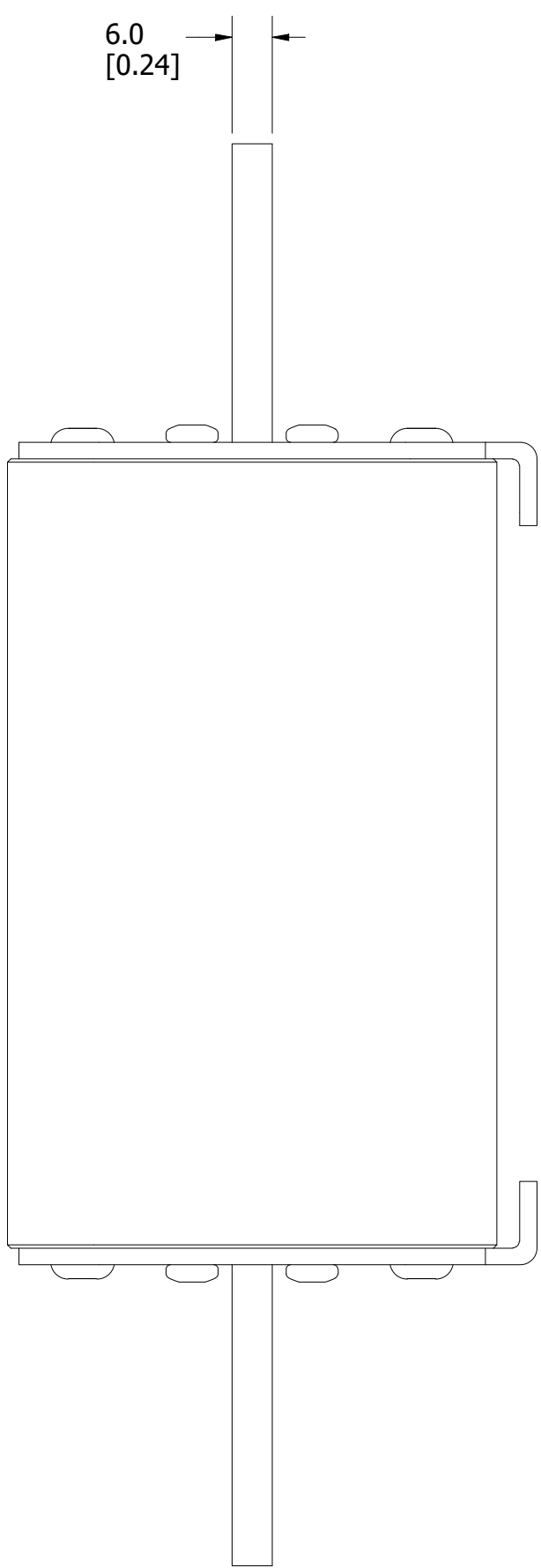
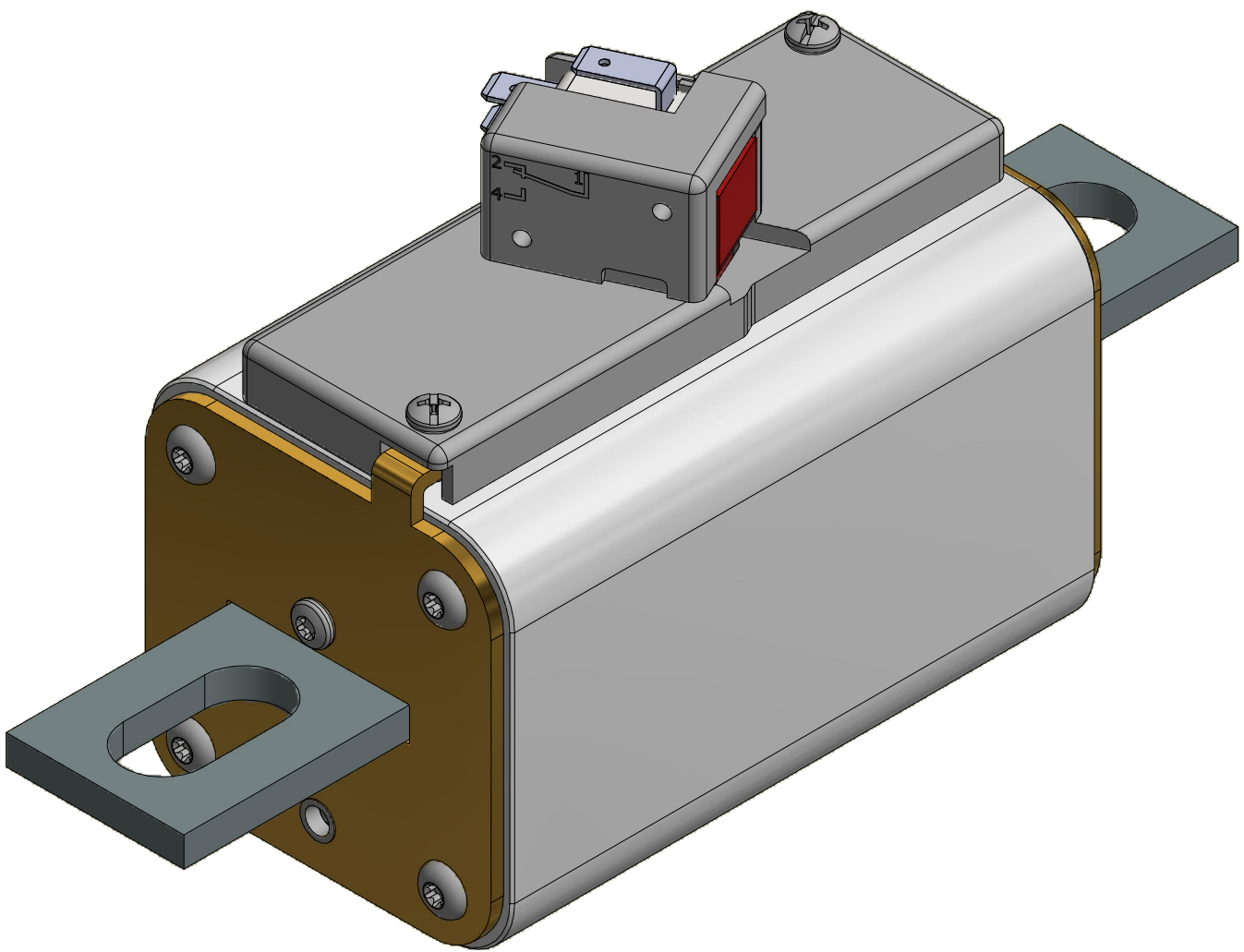
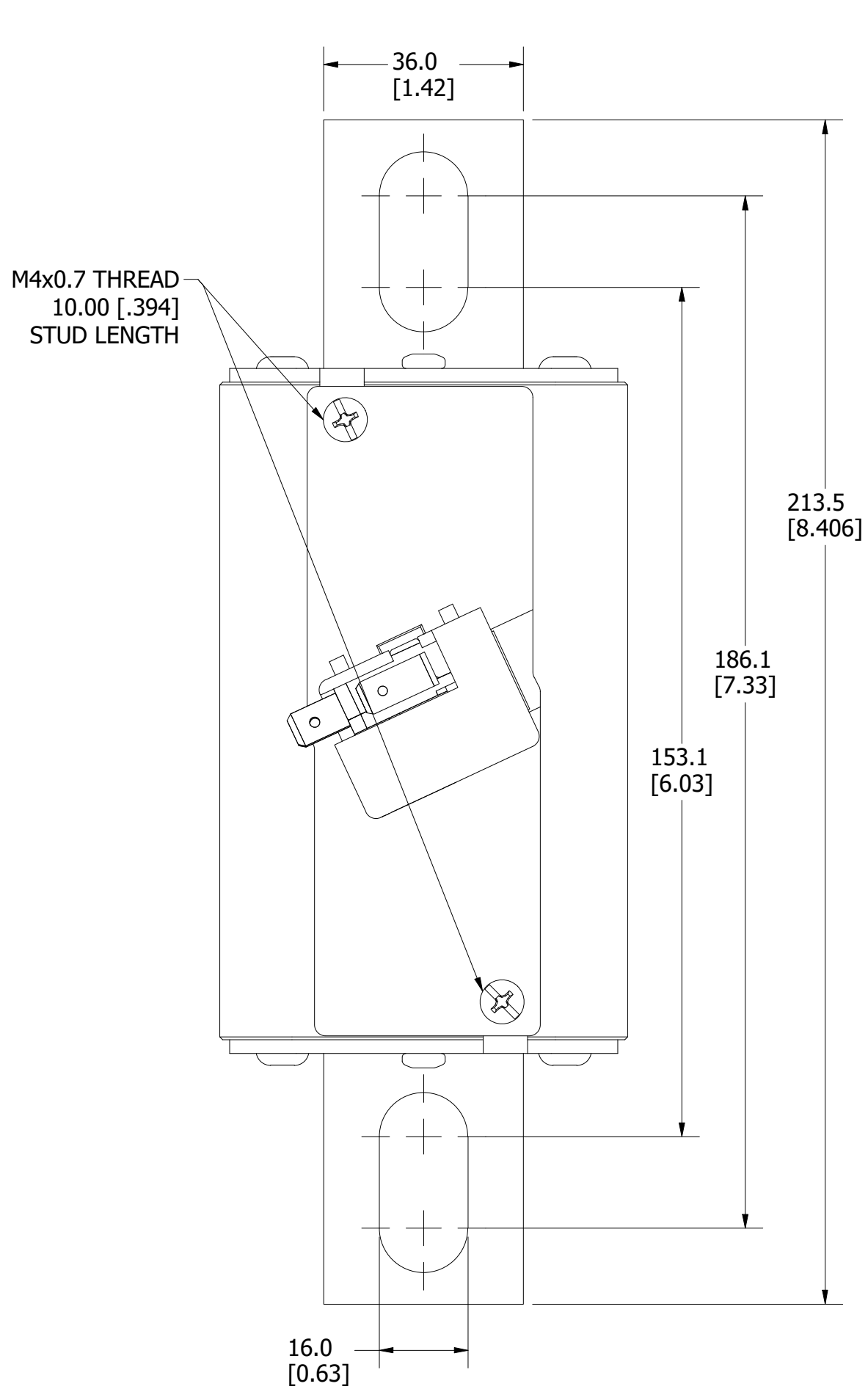



MOUNTING SPECS:

RECOMMENDED FASTENER: M14 OR 9/16"

TIGHTENING TORQUE (REFERENCE ONLY): 92Nm

REV		DATE	REVISION	DESCRIPTION
A		3/13/20	522085GCP - RELEASE	MRY
B		3/23/20	522118ECP/D - UPDATE LENGTH	MRY
C		10/25/23	526838ECP/D - ADD VIEW W/O MICROSWITCH	MRY



<S>		CRITICAL CHARACTERISTIC FOR PART SAFETY/COMPLIANCE	
●		DENOTES CRITICAL CHARACTERISTICS.	
CPK		DENOTES CPK DIMENSIONS, -MINIMUM CPK VALUE	
(ST)		DENOTES A CHARACTERISTIC THAT PROVIDES AN INDICATION OF PROCESS PERFORMANCE. PROCEDURE FOR MEASUREMENT AND TRACKING TO BE DEFINED IN LITTELFUSE INSPECTION INSTRUCTIONS.	
CP		DENOTES CP DIMENSIONS, -MINIMUM CP VALUE MUST BE WITHIN THE DIMENSIONAL LIMITATIONS SHOWN ON DRAWING AND INITIALLY LOCATED TO ALLOW FOR MAXIMUM TOOL LIFE.	
MATL SPEC		FINISH	
DRW mywork		DATE 3/3/2020	SCALE NTS
		FINISH GOOD WT GRAMS/PIECE	
UNLESS OTHERWISE SPECIFIED, DIMENSIONS ARE IN MILLIMETERS. DIMENSIONS IN BRACKETS [] ARE INCHES DIMENSIONING AND DO NOT INCLUDE PLATING. TOLERANCING TO BE INTERPRETED IN ACCORDANCE WITH ANSI Y14.5M-1994			
3RD ANGLE PROJECTION			
TITLE		PSX SIZE 3XL BOLTED (UB) FUSE OUTLINE	
 CHICAGO, ILLINOIS 60631		REVISION C	DRWG NO. OL-PSX3XLUB0000
		SHEET 1 OF 1	