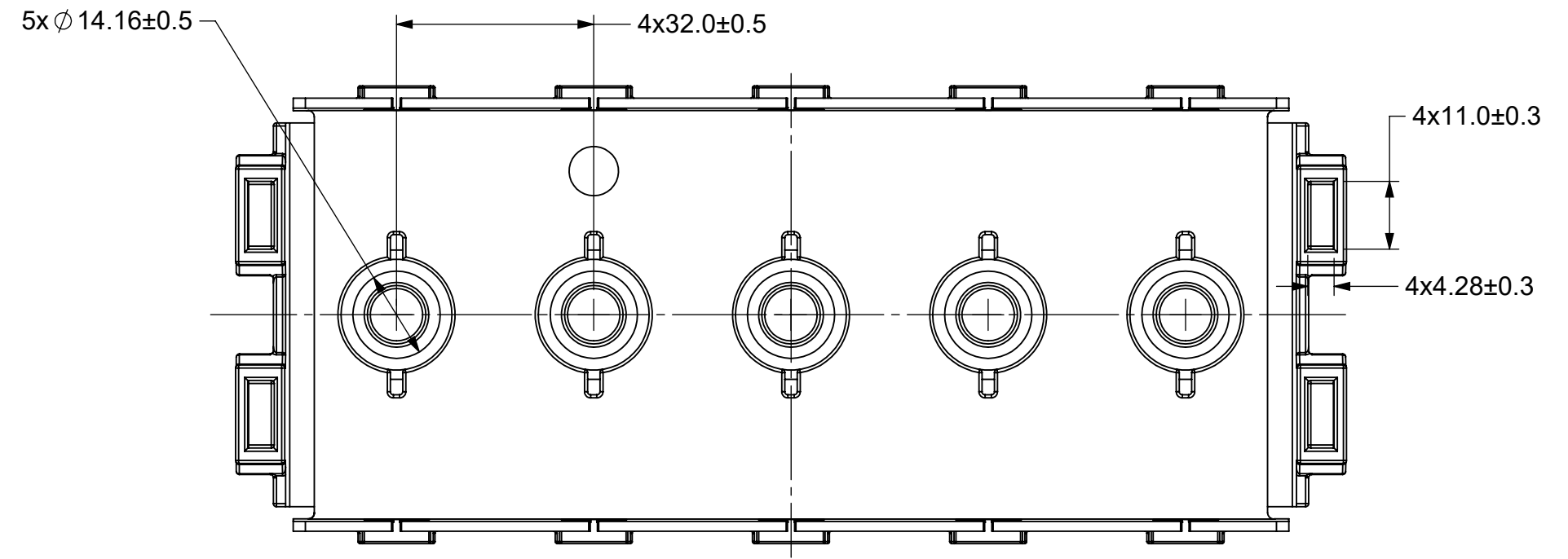
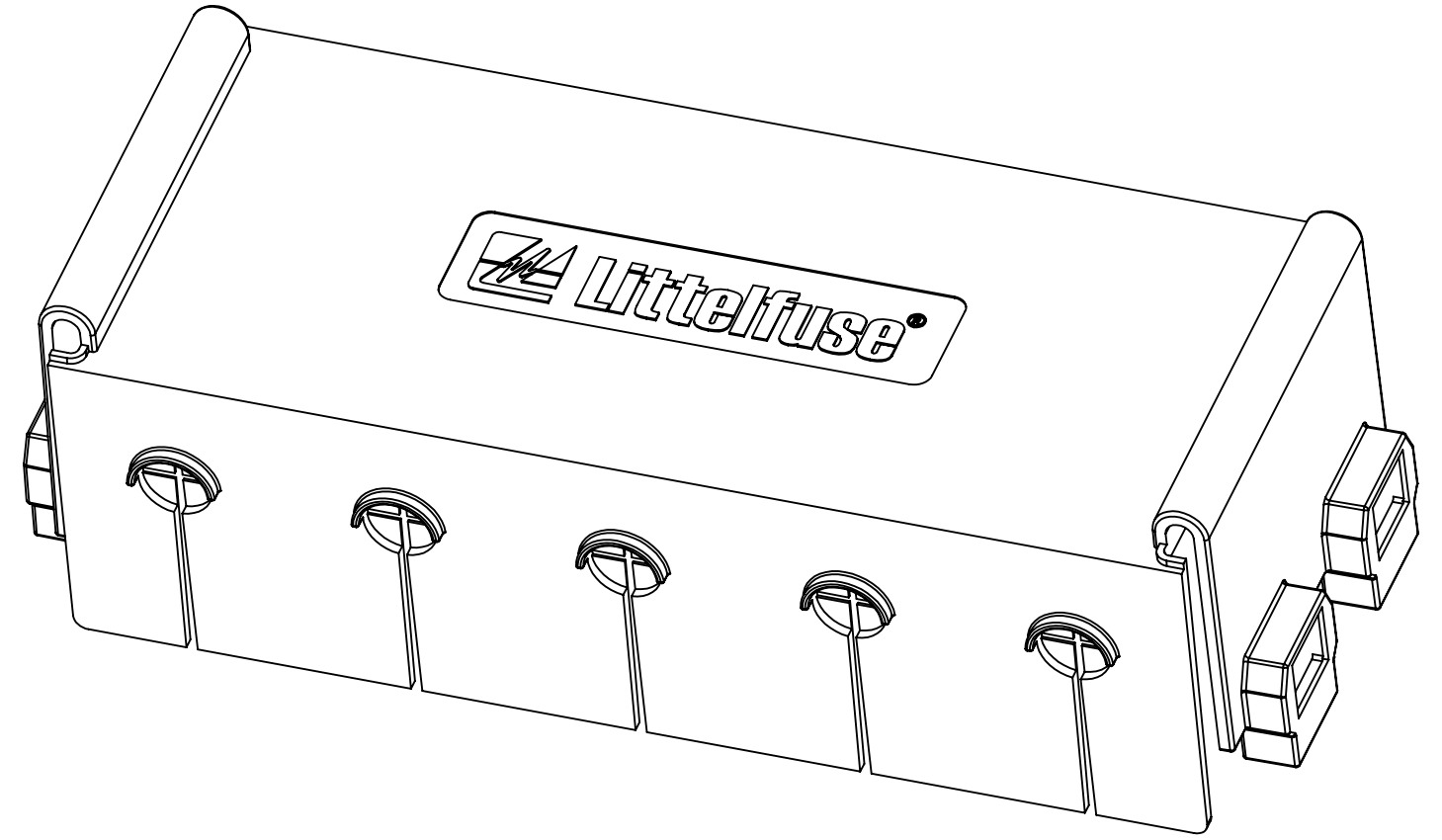
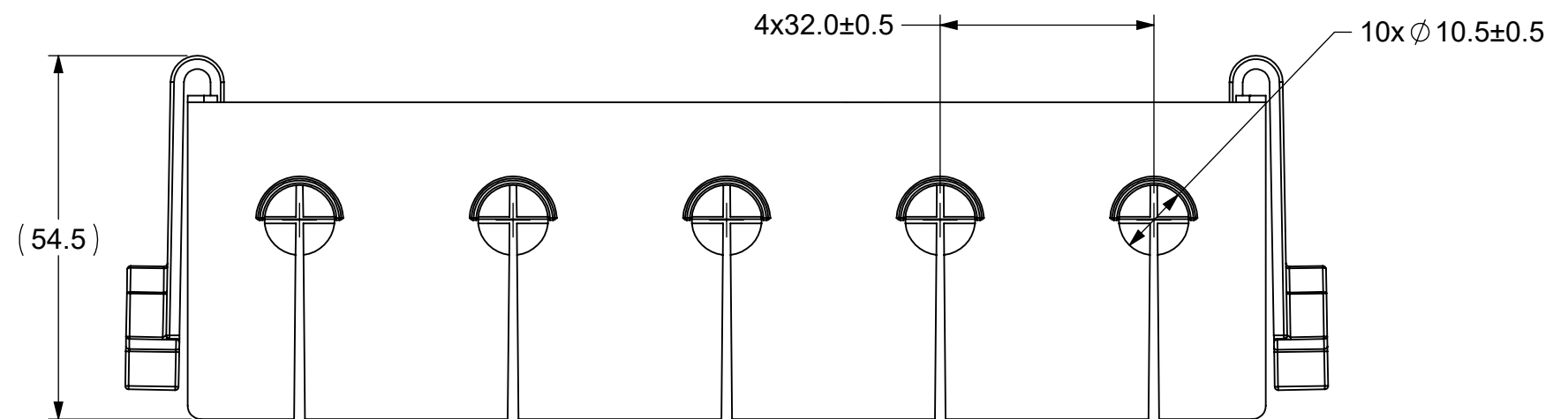
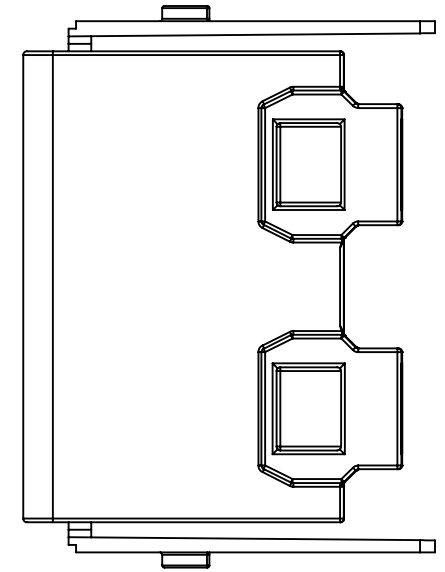
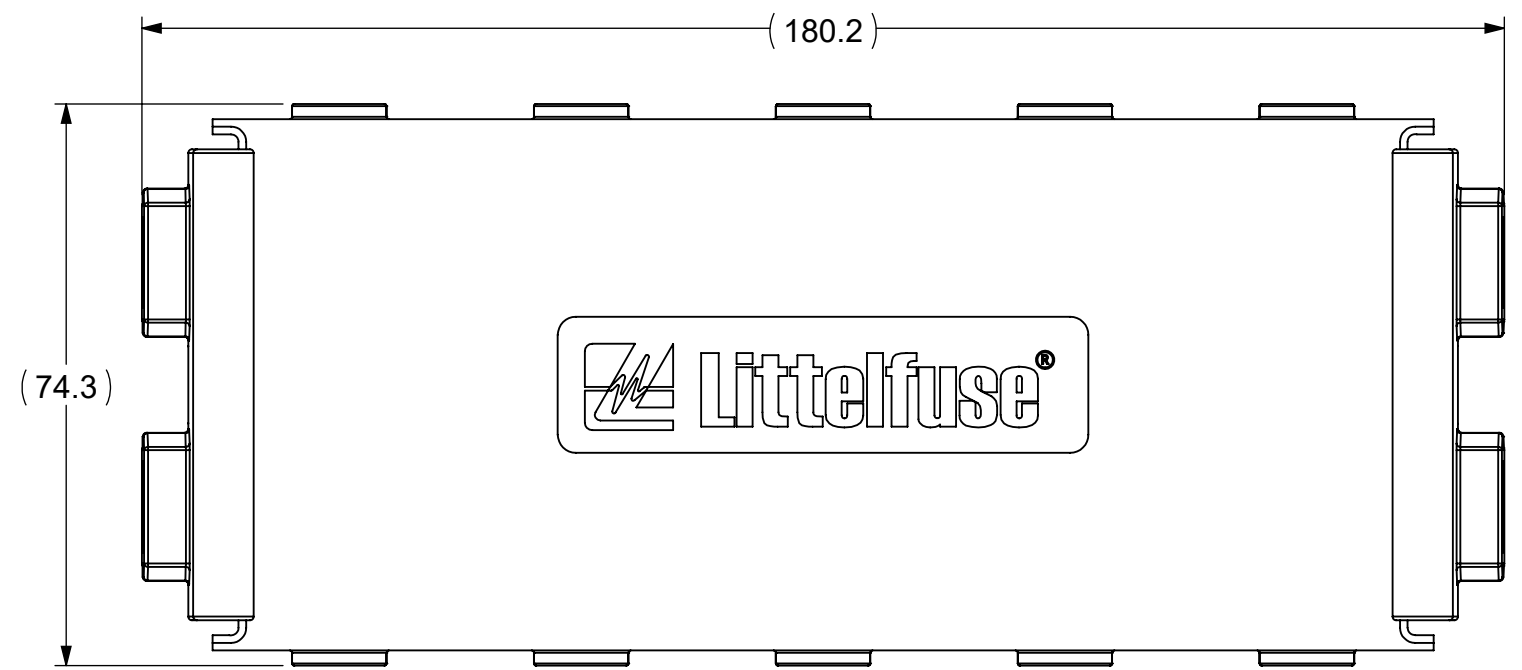


| REVISIONS |      |                            |             |          |
|-----------|------|----------------------------|-------------|----------|
| ZONE      | REV. | DESCRIPTION                | DATE        | APPROVED |
|           | A    | PCO5300241:INITIAL RELEASE | 15/APR/2023 | Du.C     |



- NOTES:
- ASSOCIATED 3D CAD FILE DEFINES ALL NON-DIMENSIONED FEATURES.
  - MATERIAL: TPV BLACK  
DUROMETER: 70-80 SHORE  
FLAMMABILITY: UL94-V0
  - LF P/N: FHZ515

| LIMIT DIMENSIONS OF RUBBER MOLDED PARTS FOR NOMINAL SIZE RANGES PER ISO IN LITTELFUSE |         |          |           |           |           |           |            |             |             |             |             |       |
|---|---------|----------|-----------|-----------|-----------|-----------|------------|-------------|-------------|-------------|-------------|-------|
| CVP-NPD20-0002, DIMENSIONS mm   |         |          |           |           |           |           |            |             |             |             |             |       |
| 0 to 4  | >4 to 6 | >6 to 10 | >10 to 16 | >16 to 25 | >25 to 40 | >40 to 63 | >63 to 100 | >100 to 160 | >160 to 250 | >250 to 315 | >315 to 400 | ANGLE |
| ±0.10   | ±0.15   | ±0.20    | ±0.20     | ±0.25     | ±0.35     | ±0.40     | ±0.50      | ±0.70       | ±0.5%       | ±0.5%       | ±0.5%       | NONE  |

DIMENSIONS ARE SHOWN IN MILLIMETERS. DIMENSIONS AND TOLERANCES ARE DEFINED ACCORDING TO ANSI/ASME Y14.5-1994.

|     |   |
|-----|---|
| ●   | FIT/ FUNCTION CRITICAL CHARACTERISTICS  |
| <S> | SAFETY/ COMPLIANCE CRITICAL CHARACTERISTICS SYMBOL  |
| CPK | DENOTES CPK DIMENSIONS MINIMUM CPK VALUE  |
| ST  | DENOTES A CHARACTERISTIC THAT PROVIDES AN INDICATION OF PROCESS PERFORMANCE. PROCEDURE FOR MEASUREMENT AND TRACKING TO BE DEFINED IN LITTELFUSE INSPECTION INSTRUCTIONS |
| CP  | DENOTES CP DIMENSIONS. MINIMUM CP VALUE MUST BE WITHIN THE DIMENSIONAL LIMITATIONS SHOWN ON DRAWING AND INITIALLY LOCATED TO ALLOW FOR MAXIMUM TOOL LIFE                |

|                              |                     |  |
|------------------------------|---------------------|--|
| NAME                         | DATE                | <br><b>Expertise Applied   Answers Delivered</b> |
| DRAWN<br>Rex.L               | 15/FEB/2022         |  |
| CHECKED<br>Du.C              | 15/FEB/2022         |  |
| FORM NO: CVP-PE40-0005 REV B |                     | TITLE  |
| THIRD ANGLE PROJECTION       |                     | 5P ZCASE COVER                                   |
| SIZE<br>C                    | DWG. NO.<br>OUTLINE | REV.<br>A  |
| DO NOT SCALE DRAWING         | SCALE 1:1           | SHEET 1 OF 1                                     |