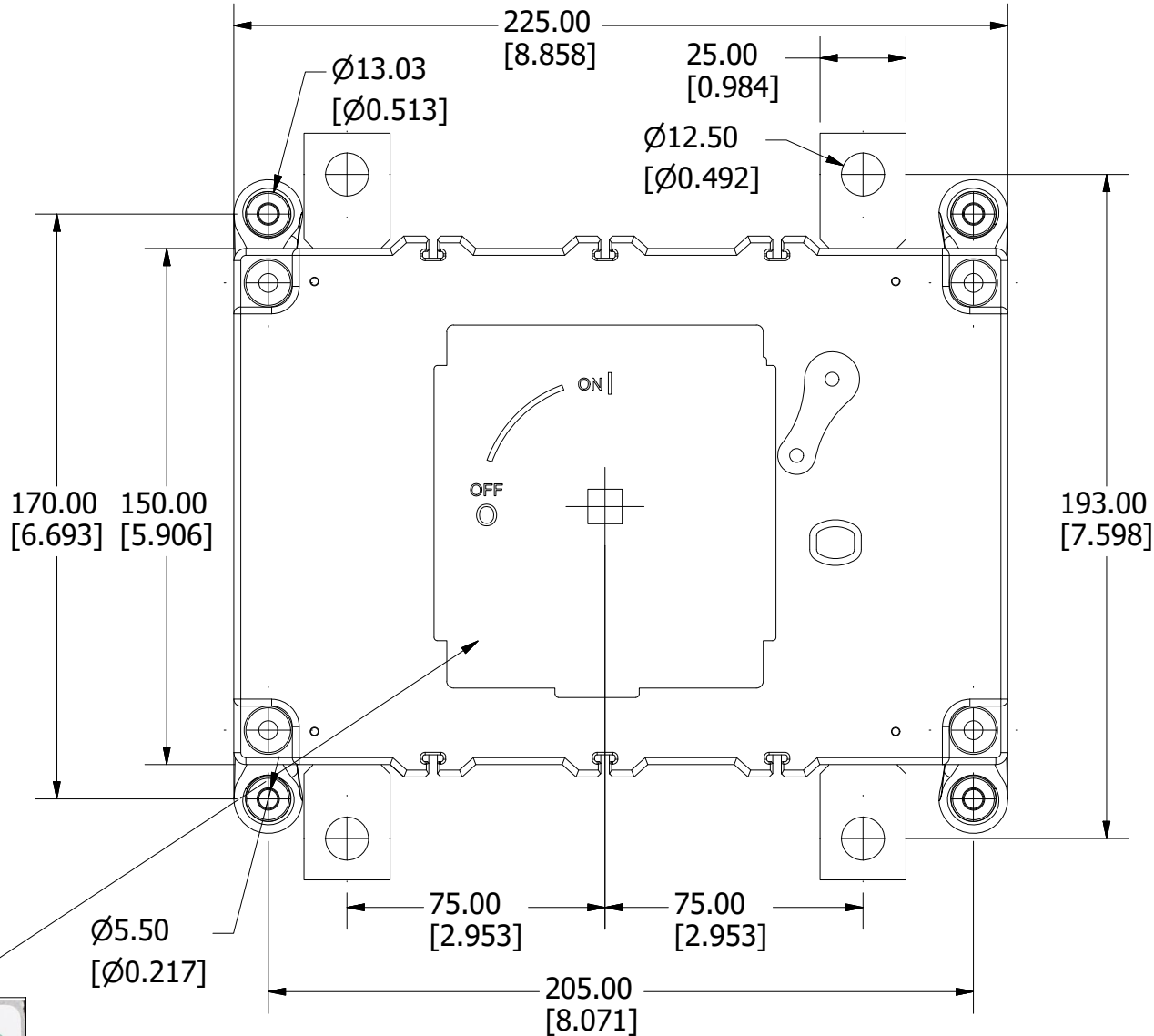
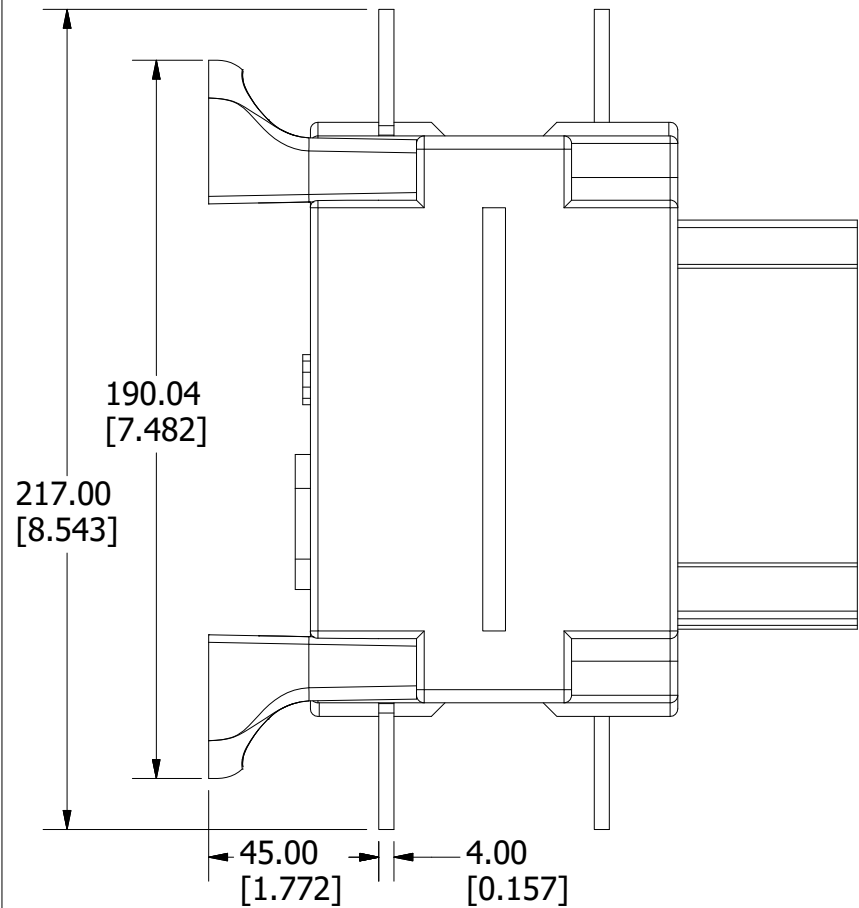
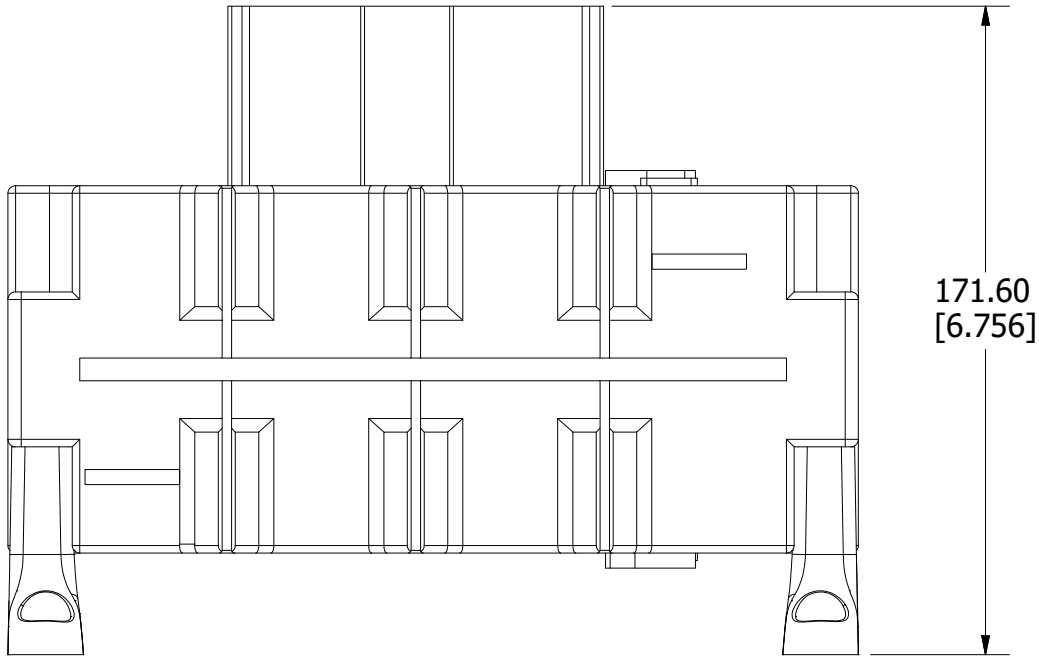
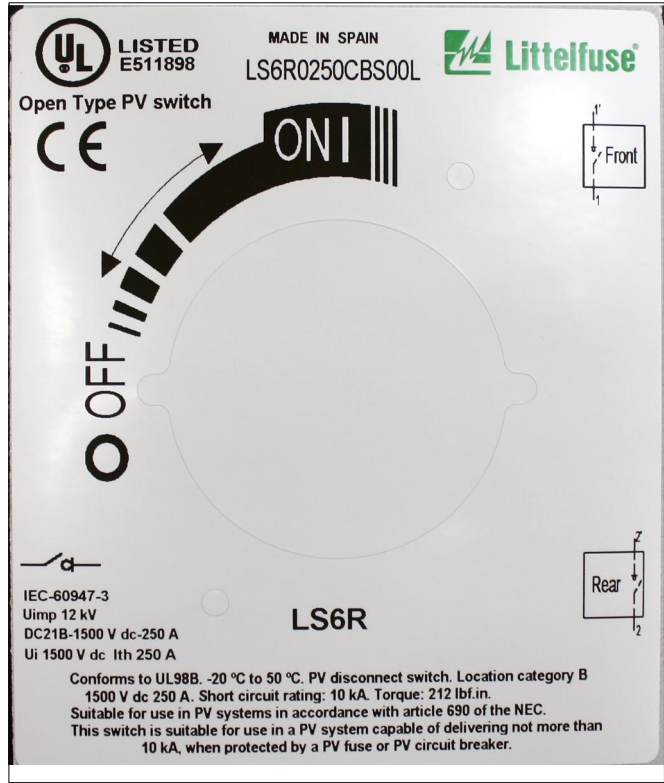



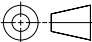

PART NUMBER	UPC CODE
LS6R0250CBS00L	07945826643



PRODUCT LABEL



REVISION		
REV	DATE	DESCRIPTION
A	4/21/20	522213GCP - RELEASE MRY

<S>		CRITICAL CHARACTERISTIC FOR PART SAFETY/COMPLIANCE	
●		DENOTES CRITICAL CHARACTERISTICS.	
CPK		DENOTES CPK DIMENSIONS, -MINIMUM CPK VALUE	
		DENOTES A CHARACTERISTIC THAT PROVIDES AN INDICATION OF PROCESS PERFORMANCE. PROCEDURE FOR MEASUREMENT AND TRACKING TO BE DEFINED IN LITTELFUSE INSPECTION INSTRUCTIONS.	
CP		DENOTES CP DIMENSIONS, -MINIMUM CP VALUE MUST BE WITHIN THE DIMENSIONAL LIMITATIONS SHOWN ON DRAWING AND INITIALLY LOCATED TO ALLOW FOR MAXIMUM TOOL LIFE.	
MATL SPEC		FINISH	
DRW myork	DATE 11/11/2019	SCALE NTS	FINISH GOOD WT GRAMS/PIECE
UNLESS OTHERWISE SPECIFIED, DIMENSIONS ARE IN MILLIMETERS, DIMENSIONS IN BRACKETS [] ARE INCHES DIMENSIONING AND DO NOT INCLUDE PLATING. TOLERANCING TO BE INTERPRETED IN ACCORDANCE WITH ANSI Y14.5M-1994			
3RD ANGLE PROJECTION 			
TITLE DISCONNECT SWITCH 250A 1500VDC 2 POLE OUTLINE			
 Littelfuse® CHICAGO, ILLINOIS 60631		REVISION A	DRWG NO. SHEET 1 OF 1 OL-LS6R0250CBS00L