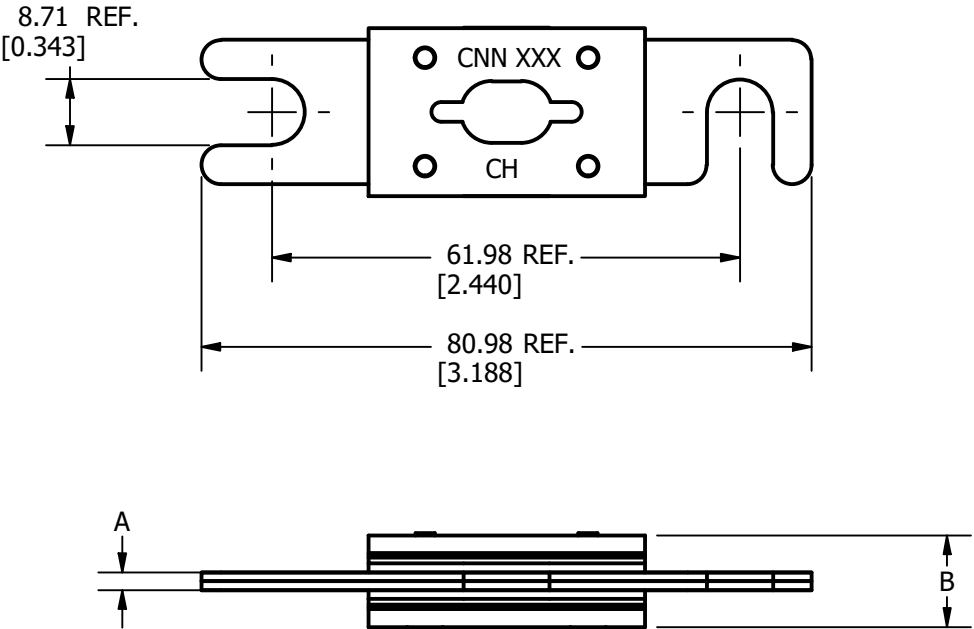


AMPERE	DIM "A"	DIM "B"
10	1.30 ±0.10 [0.051 ±0.004]	10.5 ±1.00 [0.413 ±0.039]
35	1.30 ±0.10 [0.051 ±0.004]	10.5 ±1.00 [0.413 ±0.039]
40	1.30 ±0.10 [0.051 ±0.004]	10.5 ±1.00 [0.413 ±0.039]
50	1.30 ±0.10 [0.051 ±0.004]	10.5 ±1.00 [0.413 ±0.039]
60	1.30 ±0.10 [0.051 ±0.004]	10.7 ±1.00 [0.421 ±0.039]
80	1.30 ±0.10 [0.051 ±0.004]	10.7 ±1.00 [0.421 ±0.039]
90	1.30 ±0.10 [0.051 ±0.004]	10.7 ±1.00 [0.421 ±0.039]
100	1.30 ±0.10 [0.051 ±0.004]	10.7 ±1.00 [0.421 ±0.039]
125	1.30 ±0.10 [0.051 ±0.004]	10.7 ±1.00 [0.421 ±0.039]
150	1.30 ±0.10 [0.051 ±0.004]	10.7 ±1.00 [0.421 ±0.039]
175	1.30 ±0.10 [0.051 ±0.004]	10.7 ±1.00 [0.421 ±0.039]
200	1.30 ±0.10 [0.051 ±0.004]	10.7 ±1.00 [0.421 ±0.039]
225	1.30 ±0.10 [0.051 ±0.004]	10.7 ±1.00 [0.421 ±0.039]
250	1.30 ±0.10 [0.051 ±0.004]	10.7 ±1.00 [0.421 ±0.039]
275	1.30 ±0.10 [0.051 ±0.004]	10.7 ±1.00 [0.421 ±0.039]
300	1.30 ±0.10 [0.051 ±0.004]	10.7 ±1.00 [0.421 ±0.039]
325	5.20 ±0.10 [0.205 ±0.004]	14.6 ±1.00 [0.575 ±0.039]
350	5.20 ±0.10 [0.205 ±0.004]	14.6 ±1.00 [0.575 ±0.039]
400	5.20 ±0.10 [0.205 ±0.004]	14.6 ±1.00 [0.575 ±0.039]
500	5.20 ±0.10 [0.205 ±0.004]	14.6 ±1.00 [0.575 ±0.039]
600	5.20 ±0.10 [0.205 ±0.004]	14.6 ±1.00 [0.575 ±0.039]
700	6.50 ±0.10 [0.256 ±0.004]	15.9 ±1.00 [0.575 ±0.039]
800	6.50 ±0.10 [0.256 ±0.004]	15.9 ±1.00 [0.575 ±0.039]



REVISION				
REV	DATE	DESCRIPTION		
A	3/22/17	517290GCP - RELEASE MRY		
B	11/14/23	527055ECP/D - UPDATE FUSE IMAGE TO SHOW CURRENT WINDOW DESIGN MRY		
C	12/5/23	527192ECP/D - REMOVE 180A, 375A, 675A & 750A FROM CHART MRY		

2				
1				
NO	COMPONENT NO	DESCRIPTION	QTY/M	U/M

BILL OF MATERIAL

●	DENOTES CRITICAL CHARACTERISTICS.			
CPK	DENOTES CPK DIMENSIONS, -MINIMUM CPK VALUE			
ST	DENOTES A CHARACTERISTIC THAT PROVIDES AN INDICATION OF PROCESS PERFORMANCE. PROCEDURE FOR MEASUREMENT AND TRACKING TO BE DEFINED IN LITTELFUSE INSPECTION INSTRUCTIONS.			
CP	DENOTES CP DIMENSIONS, -MINIMUM CP VALUE MUST BE WITHIN THE DIMENSIONAL LIMITATIONS SHOWN ON DRAWING AND INITIALLY LOCATED TO ALLOW FOR MAXIMUM TOOL LIFE.			
MATL SPEC		FINISH		
DRW MYORK	DATE 3/17/2017	SCALE NTS	FINISH GOOD WT GRAMS/PIECE	
UNLESS OTHERWISE SPECIFIED, DIMENSIONS ARE IN MILLIMETERS, DIMENSIONS IN BRACKETS [] ARE INCHES DIMENSIONING AND DO NOT INCLUDE PLATING. TOLERANCING TO BE INTERPRETED IN ACCORDANCE WITH ANSI Y14.5M-1994				
3RD ANGLE PROJECTION				
TITLE CNN SERIES OUTLINE				
<div><div></div><div>CHICAGO, ILLINOIS 60631</div></div>		REVISION C	DRWG NO. OL-CNN000	SHEET 1 OF 1