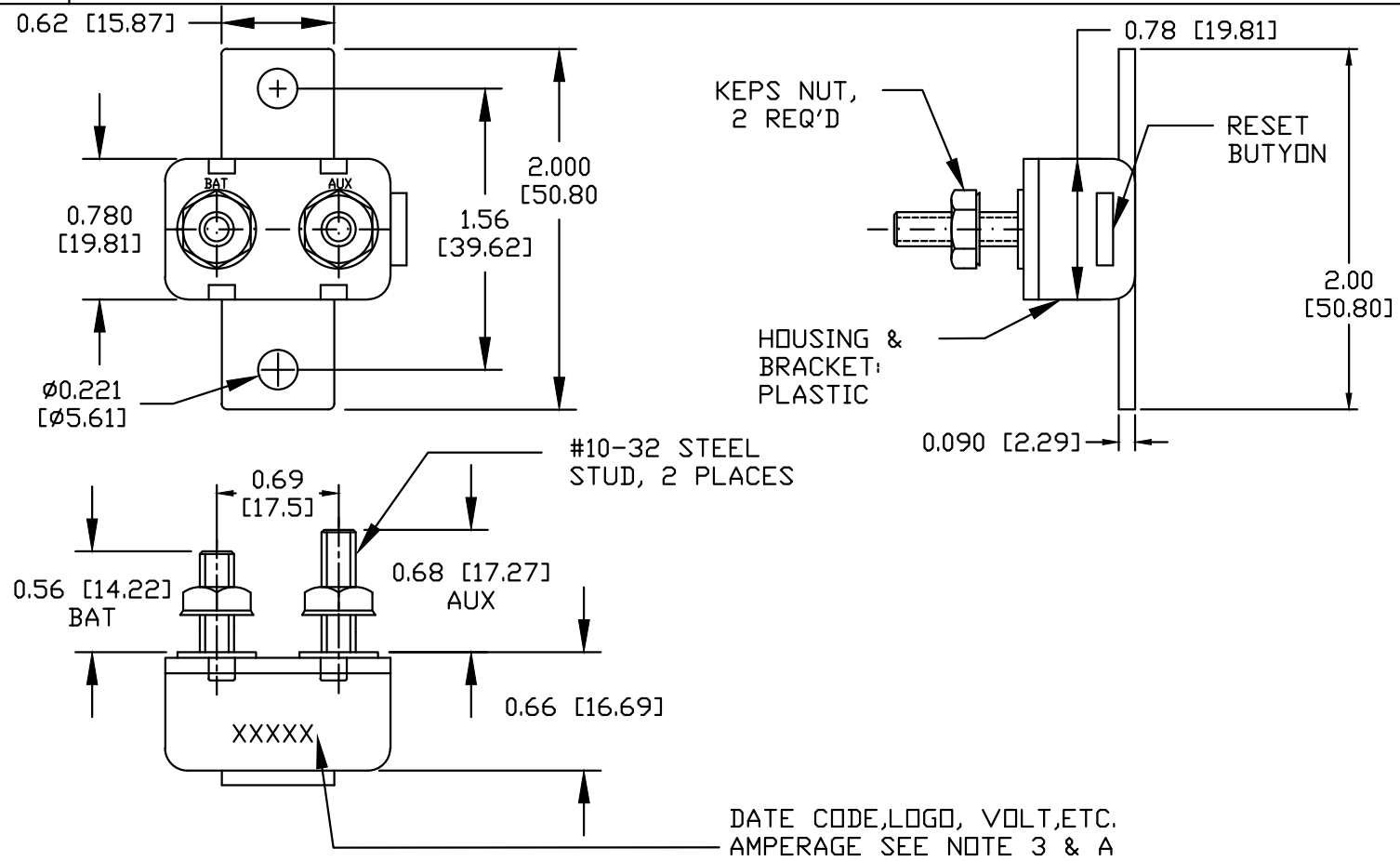


TRADITIONAL CONSTRUCTION

A

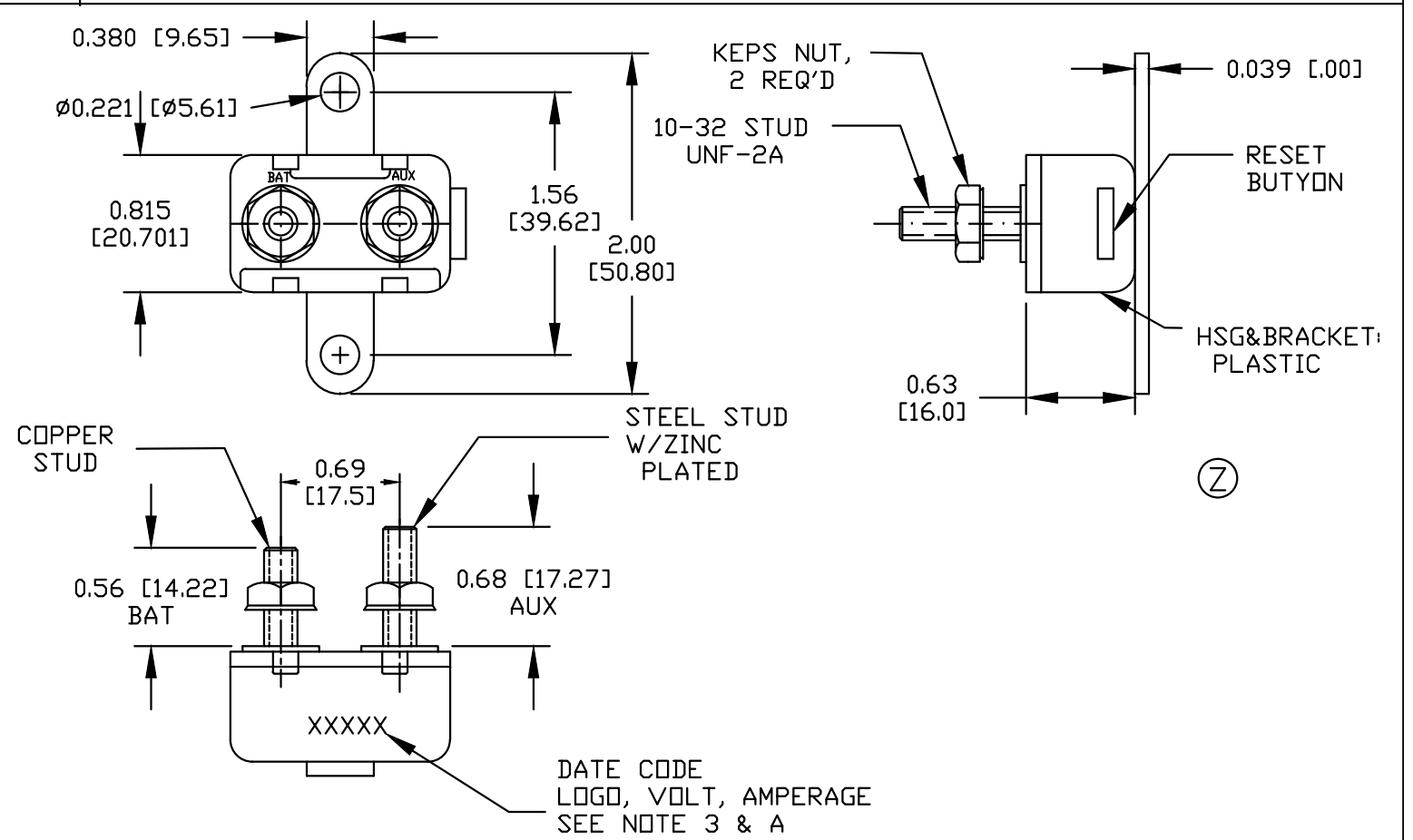
PLASTIC HOUSING WITH STEEL STUDS



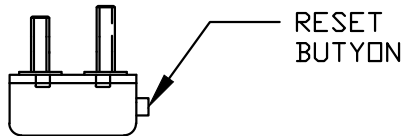
ALTERNATE CONSTRUCTION

B

PLASTIC HOUSING, COPPER & STEEL STUD



PLASTIC
HOUSING WITH
RESET BUTTON
LESS
HARDWARE
SCALE 1/2:1



TYPE OF CIRCUIT BREAKERS

TYPE 3: RESETTABLE CIRCUIT BREAKER

NOTES:

1. ALL STEEL PARTS PLATED
2. ALL DIMENSIONS ARE REFERENCE ONLY
3. LOGO, AMPERAGE, VOLTAGE, TYPE & DATE
CODE STAMPED LEGIBLY ON CASE SIDE
4. CIRCUIT BREAKER MEETS SAE J553 JUN 88
5. METAL HOUSING IS STEEL W/ZINC YELLOW
DICHROMATE OR CLEAR ZINC.
6. HARDWARE: STEEL, ZINC PLATED
7. COLE HERSEE/LITTELFUSE MAY SUPPLY
EITHER CONSTRUCTION-TYPE A OR TYPE B.

ADDITIONAL NOTES:

A) STAMP COLE HERSEE LOGO & DATE CODE AS TO
WEEK & YEAR OF MANUFACTURE

<u>Revision Control Record</u>				<u>Revision Control Record</u>				<p><u>Tolerances</u> Unless otherwise specifically noted, the following are default tolerances;</p> <p>* 2-place Decimal Dimensions +/- .02"</p> <p>* 3-place Decimal Dimensions +/- .005"</p> <p>* Angular Dimensions +/- 1.0 Deg.</p> <p>* Metric: Refer to equivalent English Dimension Tolerance</p> <p>>>> NOTE: All tolerances are Non-Cumulative. <<<</p> <p><u>Dimensional Units</u> All dimensions are expressed in inches except those shown in brackets (xxx) are expressed in millimeters</p> <p>"REF." or an Asterisk (*) = Non-Toleranced Reference Dimension, shown for clarification purposes only.</p>		<p><u>PROPRIETARY INFORMATION</u> This Engineering Drawing, and the information contained herein, is proprietary to Cole Hersee Company and may not be disclosed, re-produced, or in any other way transferred or communicated to any other party without the express written consent of an authorized representative of Cole Hersee Company.</p> <p><u>DESIGN CONTROL</u> It is the responsibility of the individual using / referencing this drawing to assure that the noted design revision level agrees with the revision level of the Controlled Document (Master Drawing). This is a NON-CONTROLLED DOCUMENT unless otherwise specifically noted.</p> <p>DO NOT SCALE - Dimensional variation may occur during printing / reproduction.</p>		<p><u>Key for Special Characteristics:</u></p> <div><div> Critical Characteristic, relating to Safety and/or Regulatory Compliance</div><div> Significant Characteristic relating to Process Control (SPC)</div><div> Control Dimension relating to Form - Fit - Function as defined by Cole Hersee Company and/or the Customer</div></div> <p>(Note that the identification of any Characteristics as being "Special" does not alter the requirement that ALL specified dimensions & tolerances must be met.)</p>		<div><div></div><div>Cole Hersee Co. 20 Old Colony Ave., South Boston, MA, 02127 Phn: 617-268-2100 Web: www.colehersee.com</div></div> <div><p><u>Description:</u> CIRCUIT BREAKER, 24 V</p><div><div><div><div><div><div>Drawing / Part No.:</div><div>30423 SERIES</div></div><div><div><div><div><div><div></div><div>CHART</div></div></div><div><div><div>Current Rev.</div><div>Z</div></div></div></div></div></div></div></div></div></div></div>	
Rev.	Description of Change	ECN No.	Date	Rev.	Description of Change	ECN No.	Date								
Z	CHANGE NOTE	11288	09/29/14		
.		
.		
.		