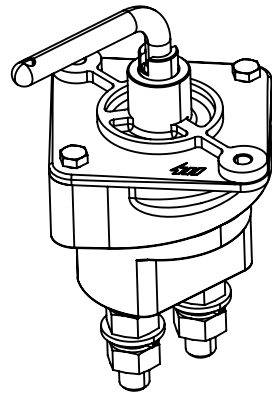
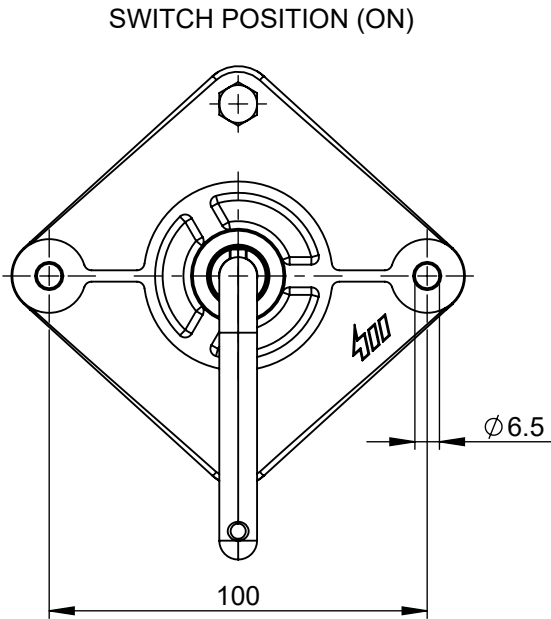
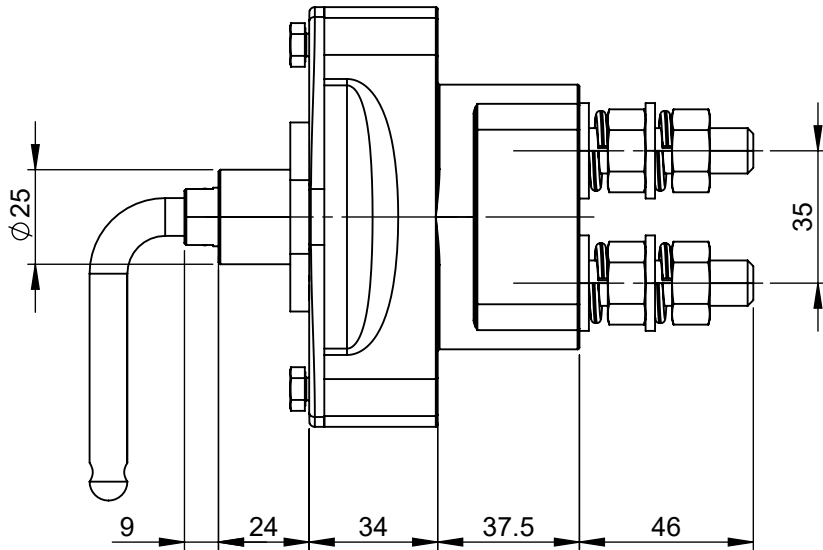
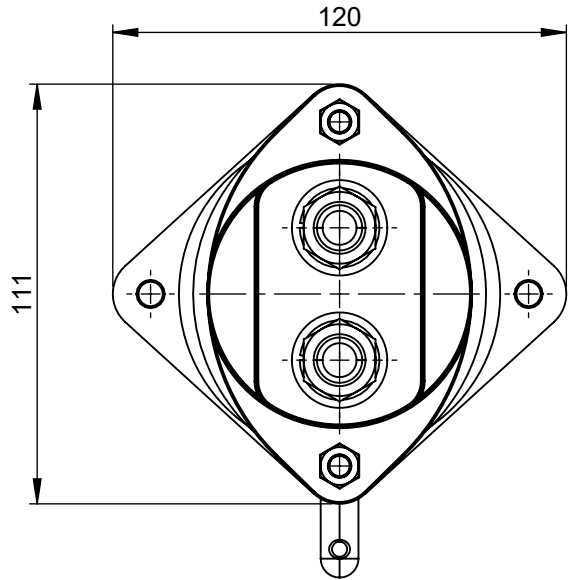
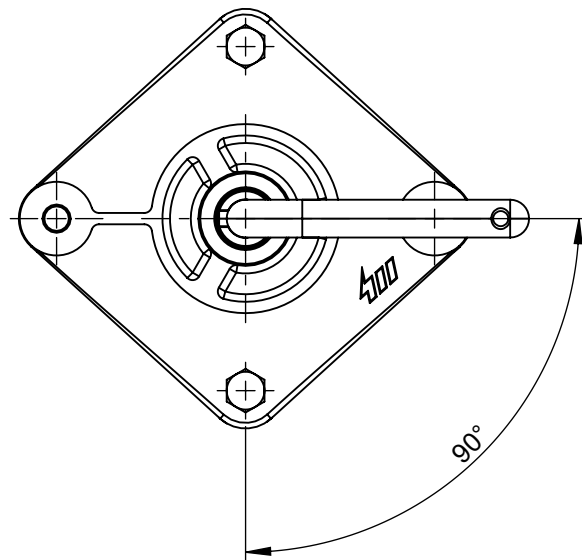
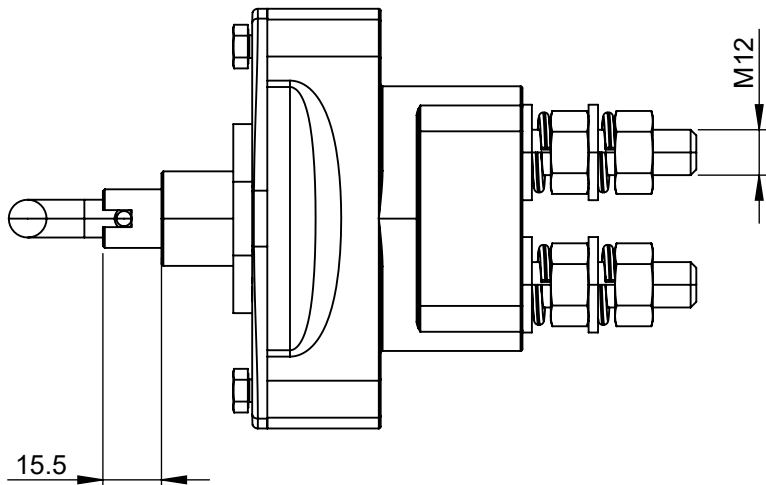


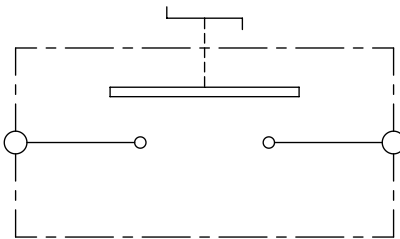
REVISIONS					
REV.	DESCRIPTION	DATE	GCF / ECR	DESIGNED	APPROVED
A	Initial release	07-Jun-22		L.Dal Molin	M.Tinto



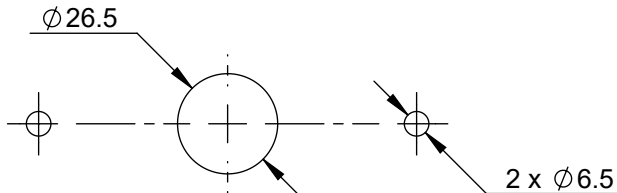
SCALE 1:3



Electrical Diagram




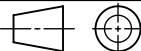


Fixing Holes



#### CHARACTERISTICS AND PRESCRIPTIONS

- Rated voltage: 12V-24V
- Voltage limit operation: 16V ÷ 32V
- Maximum continuous current in the main contact: 350A at 23°C
- Maximum current of short duration in the main contact: 2500A for 5sec at 23°C
- Number of electrical operations: 5000
- Number of mechanical operations: 5000
- Fix the M6 screws: 8 ± 1 Nm
- p/N of removable lever: 08099600

DIMENSIONS AND TOLERANCES IN MILLIMETERS, DEFINED ACCORDING TO ISO 1101-2017.								
linear dimensions								
0,5 3	>3 6	>6 30	>30 120	>120 400	>400 1000	>1000 2000		
±0,2	±0,3	±0,5	±0,8	±1,2	±2	±3		
angle (for range of lengths)								
up to 10	>10 50	>50 120	>120 400					
±1°30'	±1°	±0°30'	±0°15'					
	FIT/ FUNCTION CRITICAL CHARACTERISTICS SYMBOL							
<S>	SAFETY/ COMPLIANCE CRITICAL CHARACTERISTICS SYMBOL							
CPK	DENOTES CPK DIMENSIONS MINIMUM CPK VALUE							
	DENOTES A CHARACTERISTIC THAT PROVIDES AN INDICATION OF PROCESS PERFORMANCE.PROCEDURE FOR MEASUREMENTAND TRACKINGTO BE DEFINED IN LITTELFUSE INSPECTION INSTRUCTIONS							
CP	DENOTES CP DIMENSIONS, -MINIMUM CP VALUE MUST BE WITHIN THE DIMENSIONAL LIMITATIONS SHOWN ON DRAWING AND INITIALLY LOCATED TO ALLOW FOR MAXIMUM TOOL LIFE							
NAME		DATE		 <b>Littelfuse®</b>  Expertise Applied   Answers Delivered				
DRAWN		L. Dal Molin					07-Jun-22	
CHECKED		-					-	
		-					-	
FORM NO: CVP-PE40-0013 REV A				TITLE BMS WITH REMOVABLE LEVER IGC-350				
FIRST ANGLE PROJECTION								
				SIZE: A3				
DO NOT SCALE DRAWING				DWG. NO. OL-08098600				
				OUTLINE REV. A				
SCALE 1:2				SHEET 1 OF 1				