

REVISIONS				
REV.	DESCRIPTION	DATE	DESIGNED	APPROVED
A	First issue of outline drawing	19-May-20	L.Dal Molin	M.Tinto

FEATURES

- Nominal voltage: 12V-24V
- Maximum direct current: 150A
- Maximum short time current: 1200 A for 5s at 23 ± 5 °C
- Number of electrical operations: 5000
- Number of mechanical operations: 5000
- M10 nuts tightening torque: 20 ± 2 Nm
- Fixing on the bracket by screws and nuts M6 and tightening torque 3.3 ± 0.2 Nm (only with cover or protection mounted)
- Components supplied not assembled: key, 2 M10 nuts, 2 flat washers and 2 washer springs


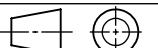
ASSEMBLY KEY

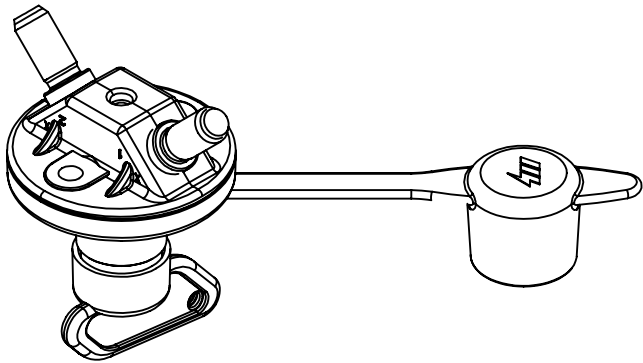
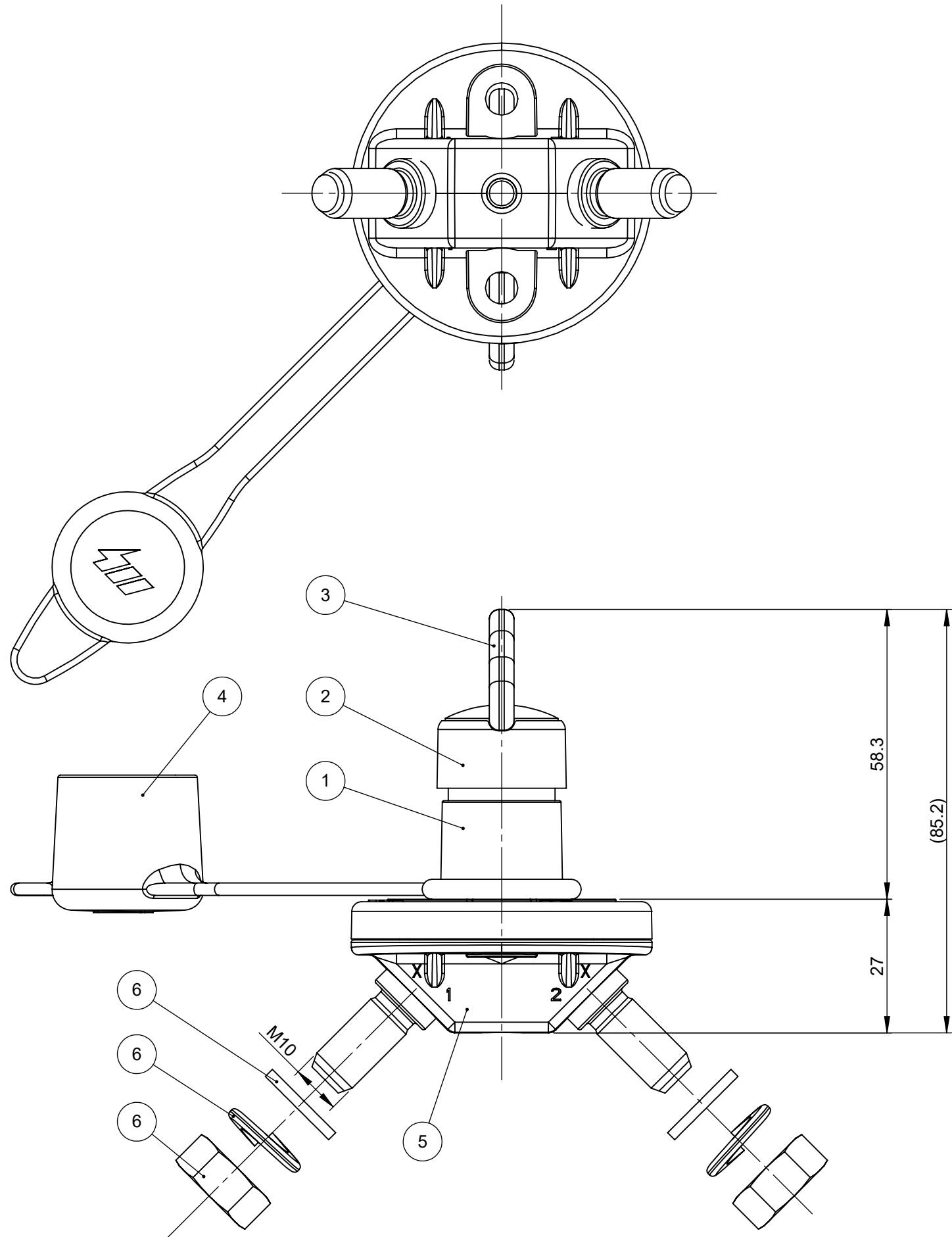
- To assemble the key, insert it and turn it clockwise of 15° taking the device in state Switched OFF; to remove it, with the device in state Switched OFF turn it counterclockwise of 15° and extraxt it

OPERATION

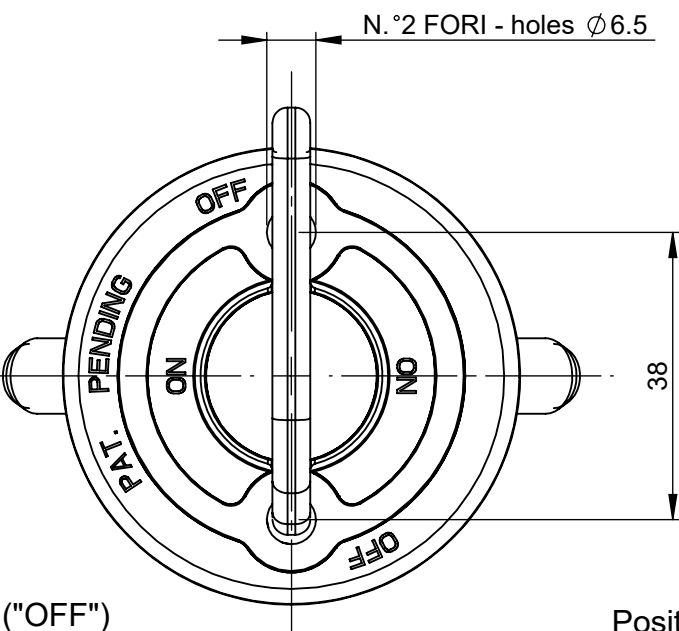
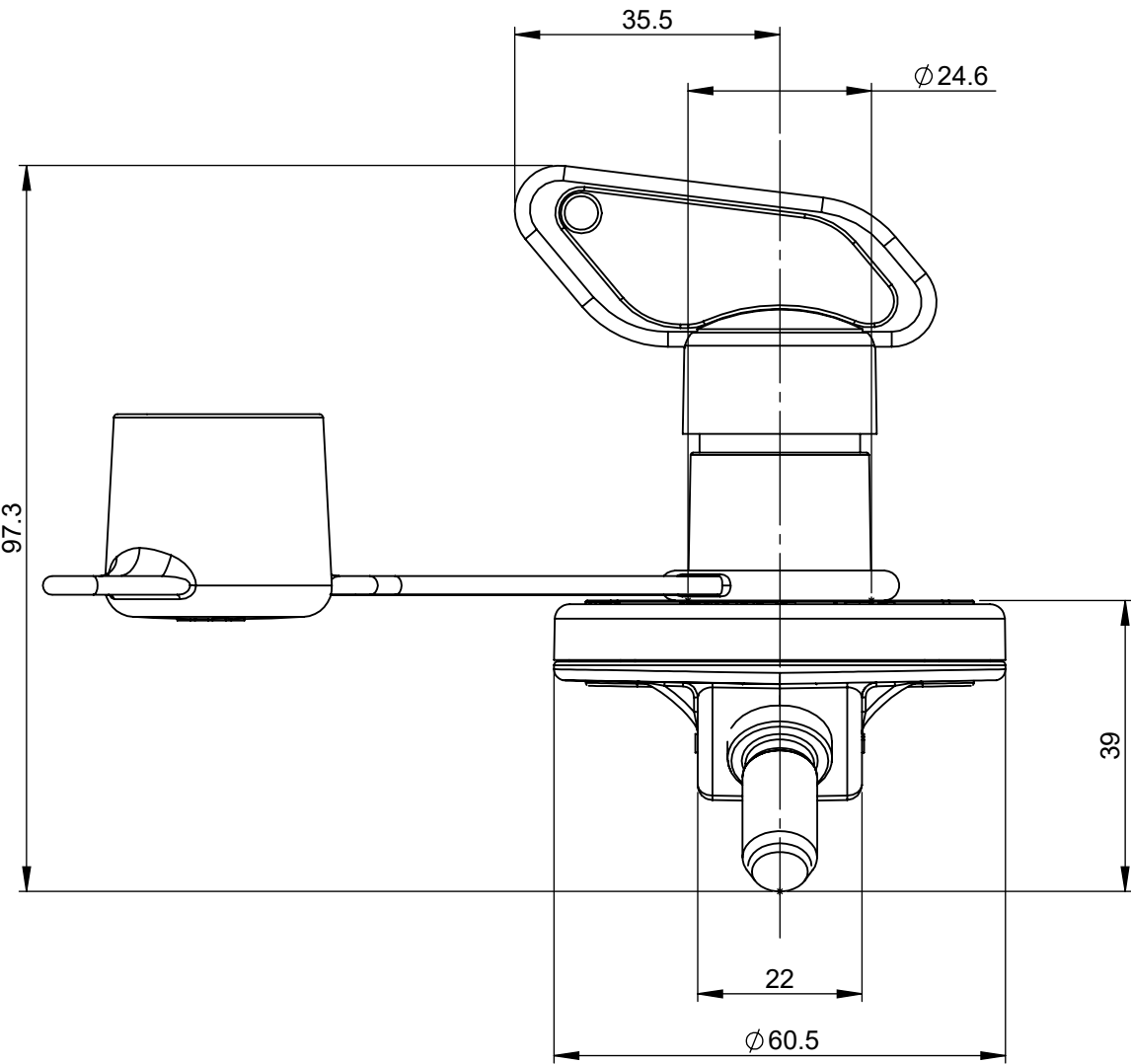
- To close the contacts: turn clockwise the key of 90°
- To open the contacts: turn counterclockwise the key of 90°

6	Kit for Bms lgc/175		1	EA
5	Lower body comoulded		1	EA
4	Cap eyelet for key	Rubber	1	EA
3	Key	Polyamide	1	EA
2	Ring protection key	Polyamide	1	EA
1	Upper body with key	Polyamide	1	EA
POS.	DESCRIPTION	MATERIAL	Q.TY	U/M

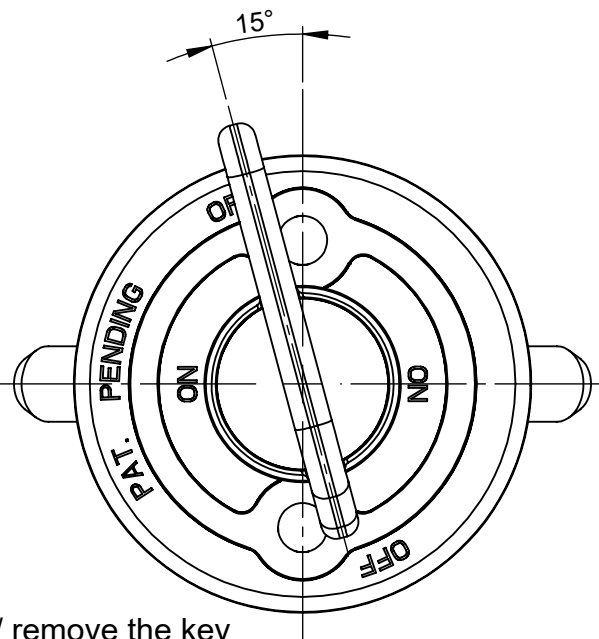
DIMENSIONS AND TOLERANCES IN MILLIMETERS. DEFINED ACCORDING TO ISO 1101-2017.						
linear dimensions						
0,5	>3	>6	>30	>120	>400	>1000
3	30	120	400	1000	2000	
±0,2	±0,3	±0,5	±0,8	±1,2	±2	±3
angle (for range of lengths)						
up to 10	>10	>50	>120	>400	>1000	>2000
±1°30'	±1°	±0°30'	±0°15'			
● FIT/ FUNCTION CRITICAL CHARACTERISTICS SYMBOL						
<S> SAFETY/ COMPLIANCE CRITICAL CHARACTERISTICS SYMBOL						
CPK DENOTES CPK DIMENSIONS MINIMUM CPK VALUE						
ST DENOTES A CHARACTERISTIC THAT PROVIDES AN INDICATION OF PROCESS PERFORMANCE.PROCEDURE FOR MEASUREMENTAND TRACKINGTO BE DEFINED IN LITTELFUSE INSPECTION INSTRUCTIONS						
CP DENOTES CP DIMENSIONS - MINIMUM CP VALUE MUST BE WITHIN THE DIMENSIONAL LIMITATIONS SHOWN ON DRAWING AND INITIALLY LOCATED TO ALLOW FOR MAXIMUM TOOL LIFE						
	NAME	DATE	<div>Littelfuse Expertise Applied Answers Delivered</div>			
DRAWN	L. Dal Molin	02-Apr-19				
CHECKED	-	-				
	-	-	TITLE			
	-	-	MANUAL BDS IGC/175-C			
FORM NO.	CVP-PE40-0013	REV A				
FIRST ANGLE PROJECTION			SIZE:	DWG. NO.	OUTLINE	REV.
			A2	OL-08080300	A	
DO NOT SCALE DRAWING			SCALE 1:1	SHEET 1 OF 1		



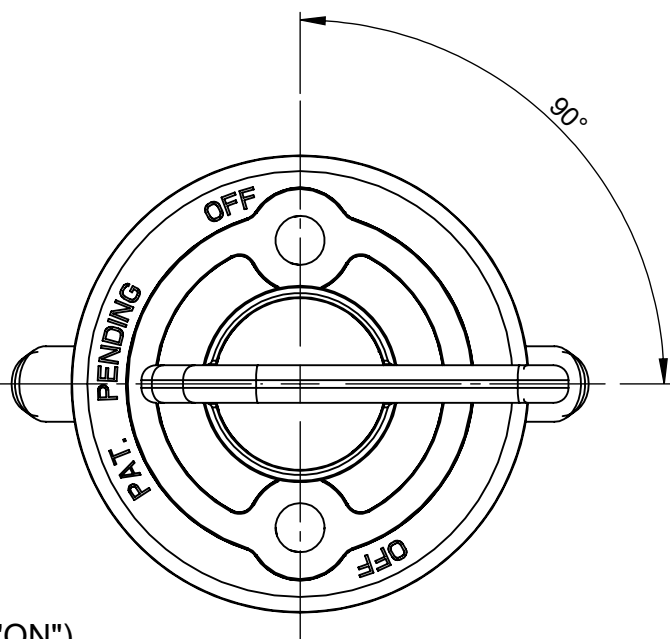
SCALE 1:2



Open contact ("OFF")
(View without flat washers
- washer springs - nuts)



Position to insert / remove the key
(View without flat washers - washer
springs - nuts and protection cap)



Closed contact ("ON")
(View without flat washers - washer
springs - nuts and protection cap)

SAP drawing number:

Material and treatments: