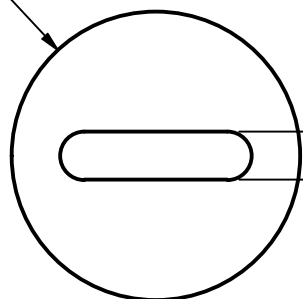


Ø38.1 ± 0.51
[Ø1.500 ± 0.020]



6.35 ± 0.25
[0.250 ± 0.010]

APPROXIMATE SHIPPING WEIGHT: 5 FUSES / 2.7 LB

25.3 ± 0.51
[0.995 ± 0.020]

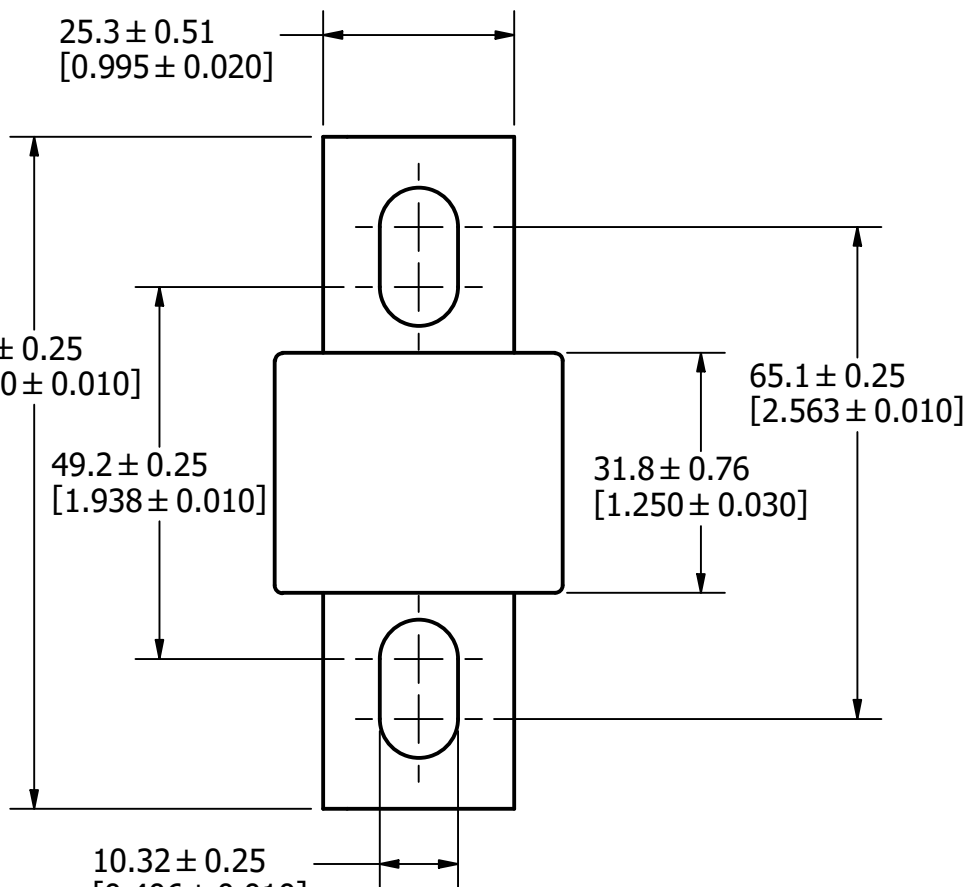
88.9 ± 0.25
[3.500 ± 0.010]

49.2 ± 0.25
[1.938 ± 0.010]

65.1 ± 0.25
[2.563 ± 0.010]


31.8 ± 0.76
[1.250 ± 0.030]

10.32 ± 0.25
[0.406 ± 0.010]



REVISION

REV	DATE	DESCRIPTION
A	8/22/22	525593GCP - RELEASE MRY

1				
NO	COMPONENT NO	DESCRIPTION	QTY/M	U/M
BILL OF MATERIAL				
<S>	CRITICAL CHARACTERISTIC FOR PART SAFETY/COMPLIANCE			
●	DENOTES CRITICAL CHARACTERISTICS.			
CPK	DENOTES CPK DIMENSIONS, -MINIMUM CPK VALUE			
ST	DENOTES A CHARACTERISTIC THAT PROVIDES AN INDICATION OF PROCESS PERFORMANCE. PROCEDURE FOR MEASUREMENT AND TRACKING TO BE DEFINED IN LITTELFUSE INSPECTION INSTRUCTIONS.			
CP	DENOTES CP DIMENSIONS, -MINIMUM CP VALUE MUST BE WITHIN THE DIMENSIONAL LIMITATIONS SHOWN ON DRAWING AND INITIALLY LOCATED TO ALLOW FOR MAXIMUM TOOL LIFE.			
MATL SPEC			FINISH	
DRW JMoler	DATE 8/17/2022	SCALE NTS	FINISH GOOD WT GRAMS/PIECE	
UNLESS OTHERWISE SPECIFIED, DIMENSIONS ARE IN MILLIMETERS, DIMENSIONS IN BRACKETS [] ARE INCHES DIMENSIONING AND DO NOT INCLUDE PLATING. TOLERANCING TO BE INTERPRETED IN ACCORDANCE WITH ANSI Y14.5M-1994				
3RD ANGLE PROJECTION				
TITLE L17T 300-800A OUTLINE				
 Littelfuse® CHICAGO, ILLINOIS 60631		REVISION A	DRWG NO. OL-L17T800	SHEET 1 OF 1