

High Voltage Fuse - LC HEV 50A Series

Rated 275 VAC



Specifications

Voltage Rating (50A):	275 VAC
Interrupting Rating (50A):	10,000A @ 275 VAC
Operating Temperature Range:	-40°C to +125°C

LC HEV 50A Series

Description

LC HEV 50A fuses comes in six configurations. Each version of the cylindrical high-voltage fuse protects circuits in EVs and hybrid passenger vehicles. Ask Littelfuse which configuration best meets your needs.

Features & Benefits

- Available with blade, bolt down, or PCB connectors
- Available as a cartridge fuse

Applications

- EVs
- Hybrid vehicles

Ordering Information

Part Number	Termination	Package Size
OHEVxxx.ZXC2	Cartridge	240
OHEVxxx.ZXISO2	Bolt Down (ISO)	240
OHEVxxx.ZXP2Y	Blade	240
OHEVxxx.ZXPCB2	PCB Mount	240
OHEVxxx.ZXPCBL2	PCB Mount (Long)	240
OHEVxxx.ZXBD2	Bolt Down (Axial)	240

High Voltage Fuse - LC HEV

Rated 450 V DC

Ratings

Part Number	Current Rating (A)	Voltage Rating (VAC)	Color Code	Typical Voltage Drop at 70% I _R (mV)	Maximum Voltage Drop Spec at 100% I _R (mV)	Typical Cold Resistance (mΩ)	Minimum Melting I ² t (A ² s)
0HEV050.XXX	50	275		57	200	1.2	1495

The typical I²t is an average value calculated from the breaking capacity tests by using the melting time before the arcing occurs.

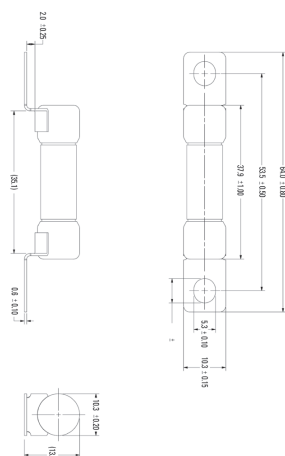
Dimensions

Dimensions in mm

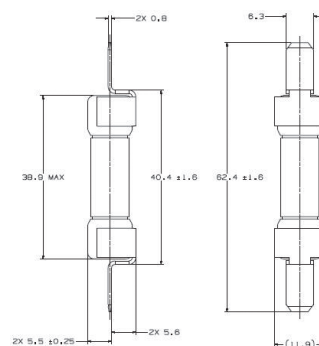
ZXC2 Cartridge



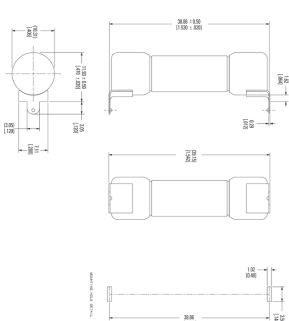
ZXISO2 Bolt Down (ISO)



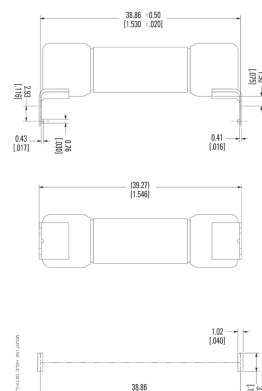
ZXP2Y Blade



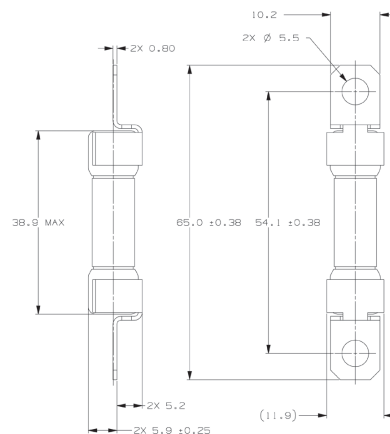
ZXPCB2 PCB Mount



ZXPCBL2 PCB Mount (Long)



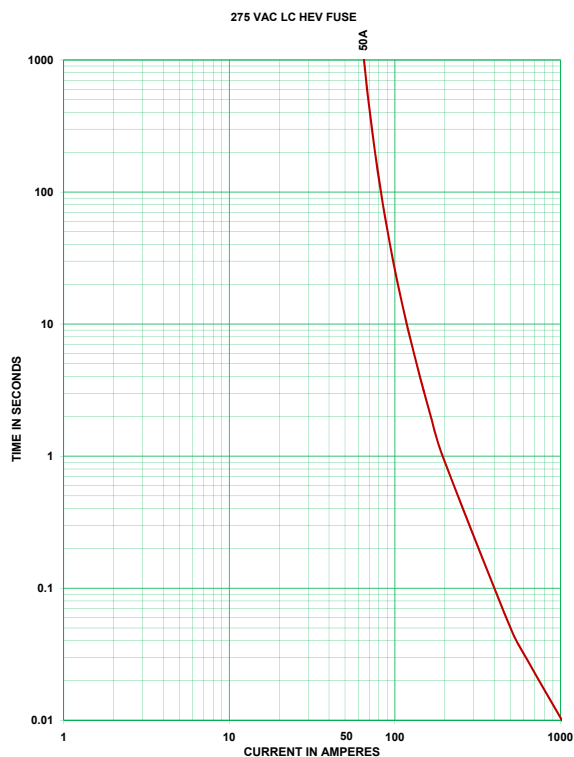
ZXBD2 Bolt Down (Axial)



High Voltage Fuse - LC HEV

Rated 450 V DC

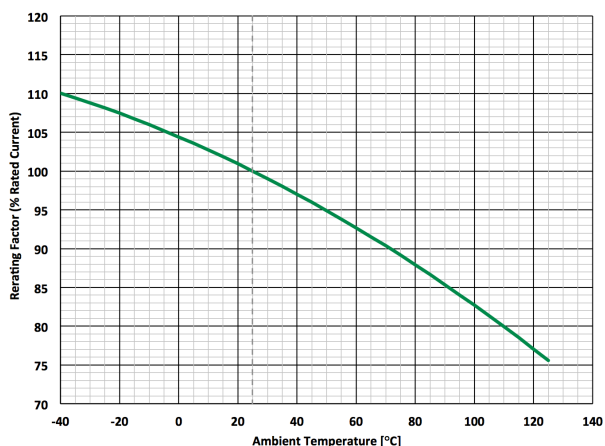
Time-Current Characteristic Curves



Time-Current Characteristics

% of Rating	Opening Time Min / Max (s)
100	100 hrs / -
110	4 hrs / -
135	-
150	-
200	0.5 / 100
300	0.1 / 15
500	0.05 / 1

Typical Derating Curve



Derating curves may change depending on the final condition of the application (terminals characteristics, wire size etc...). Please ask Littelfuse for more information.