

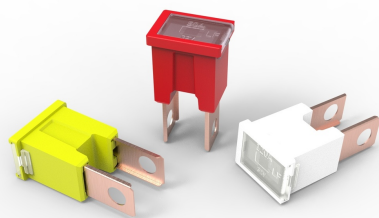
# PAL Fuses - 294C Series

Rated 32 V DC

RoHS

## Specifications

<b>Voltage Rating:</b>	32 V DC
<b>Current Cycling:</b>	24°C
<b>Operating Temperature Range:</b>	-40°C to +125°C
<b>Complies with</b>	JASO 0612



PAL Fuses - 294C Series

## Description

Many Japanese automakers use 294C Series Auto Link PAL fuses as original equipment for protecting alternators and starters. These bolt-down fuses also have blade terminals to offer more than one mounting option. During tests, each of the 294C Series PAL fuses met its performance requirements when receiving 50 % of its ampere rating for 10 000 cycles when current flowed for 5 minutes and was shut off for 10 minutes. The tests were conducted while the temperature of the bolt-down cartridge fuse was 24 °C.

## Features & Benefits

- Color coding indicates ampere rating
- Transparent covers make it easier to see when fuses blow
- Can plug into fuse boxes, be bolted in place, or both

## Applications

- Cars made in Japan and the United States

## Ordering Information

Part Number	Package Size
0294xxx.MXJ-C	1000

# PAL Fuses - 294C Series

Rated 32 V DC

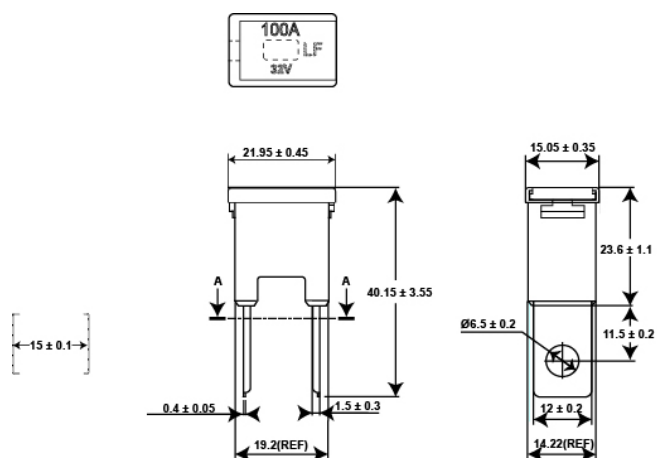
## Ratings

Part Number	Current Rating (A)	Body Color
0294020._	20	LIGHT BLUE
0294030._	30	PINK
0294040._	40	GREEN
0294050._	50	RED
0294060._	60	YELLOW
0294070._	70	BROWN
0294080._	80	BLACK
0294100._	100	BLUE
0294120._	120	WHITE

(Average Initial Measurements)

## Dimensions

Dimensions in mm



# PAL Fuses - 294C Series

Rated 32 V DC

## Time-Current Characteristics

% of Rating	Opening Time Min / Max (s)
110	14,400
200	5 / 100
350	0.2 / 7
600	0.040 / 1