

Class RK5 Fuses

FLNR Series

250 V ac • Dual Element • Time Delay • $\frac{1}{10}$ –600 A



Description

The FLNR Series sets the standard for general purpose fuses. The dual-element design provides advanced short-circuit and overload protection. These time-delay fuses are also available in an indicating version, see FLNR_ID series.

Features & Benefits

FEATURES	BENEFITS
Dual-element design	Provides advanced short-circuit and overload protection
Current limiting	Restricts fault current to provide a high degree of circuit protection

Applications

- Service entrance switches
- Transformers
- Switchboard mains and feeders
- Motor control central mains and motor branch circuits
- All general purpose circuits

Specifications

Voltage Rating	Ac: 250 V Dc: 125 V
Ampere Range	$\frac{1}{10}$ –600 A
Interrupting Ratings	Ac: 200 kA rms symmetrical; 300 kA rms symmetrical (Littelfuse self-certified) Dc: 20 kA
Applicable Standards	UL 248-12, Class RK5
Country of Origin	Mexico

Certification & Compliance

UL	UL Listed (File: E81895)
CSA	CSA Certified (File: LR29862)

Class RK5 Fuses

FLNR Series

Accessories

LFR25 series fuse holder

Ordering Information

AMPERE	CATALOG NUMBER	PRODUCT MARKING	PACK QUANTITY	ORDERING NUMBER	UPC	AGENCY APPROVALS	
						UL	CSA
1/10	FLNR.100	FLNR 1/10A	10	FLNR.100T	07945815011	•	•
1/8	FLNR.125	FLNR 1/8A	10	FLNR.125T	07945815012	•	•
15/100	FLNR.150	FLNR 15/100A	10	FLNR.150T	07945815013	•	•
3/10	FLNR.200	FLNR 3/10A	10	FLNR.200T	07945815018	•	•
1/4	FLNR.250	FLNR 1/4A	10	FLNR.250T	07945815019	•	•
3/10	FLNR.300	FLNR 3/10A	10	FLNR.300T	07945800086	•	•
1/2	FLNR.400	FLNR 1/2A	10	FLNR.400T	07945815023	•	•
1/2	FLNR.500	FLNR 1/2A	10	FLNR.500T	07945815024	•	•
3/10	FLNR.600	FLNR 3/10A	10	FLNR.600T	07945800087	•	•
3/10	FLNR.800	FLNR 3/10A	10	FLNR.800T	07945800088	•	•
1	FLNR001	FLNR 1A	10	FLNR001.T	07945815031	•	•
1 1/8	FLNR1.12	FLNR 1 1/8A	10	FLNR1.12T	07945815032	•	•
1 1/4	FLNR1.25	FLNR 1 1/4A	10	FLNR1.25T	07945815034	•	•
1 3/10	FLNR01.4	FLNR 1 3/10A	10	FLNR01.4T	07945815036	•	•
1 1/2	FLNR01.5	FLNR 1 1/2A	10	FLNR01.5T	07945815037	•	•
1 5/10	FLNR01.6	FLNR 1 5/10A	10	FLNR01.6T	07945815038	•	•
1 5/10	FLNR01.8	FLNR 1 5/10A	10	FLNR01.8T	07945815040	•	•
2	FLNR002	FLNR 2A	10	FLNR002.T	07945815041	•	•
2 1/4	FLNR2.25	FLNR 2 1/4A	10	FLNR2.25T	07945815042	•	•
2 1/2	FLNR02.5	FLNR 2 1/2A	10	FLNR02.5T	07945815043	•	•
2 8/10	FLNR02.8	FLNR 2 8/10A	10	FLNR02.8T	07945815046	•	•
3	FLNR003	FLNR 3A	10	FLNR003.T	07945815047	•	•
3 3/10	FLNR03.2	FLNR 3 3/10A	10	FLNR03.2T	07945815049	•	•
3 1/2	FLNR03.5	FLNR 3 1/2A	10	FLNR03.5T	07945815051	•	•
4	FLNR004	FLNR 4A	10	FLNR004.T	07945815053	•	•
4 1/2	FLNR04.5	FLNR 4 1/2A	10	FLNR04.5T	07945815054	•	•
5	FLNR005	FLNR 5A	10	FLNR005.T	07945815055	•	•
5 5/10	FLNR05.6	FLNR 5 5/10A	10	FLNR05.6T	07945815056	•	•
6	FLNR006	FLNR 6A	10	FLNR006.T	07945815058	•	•
6 1/4	FLNR6.25	FLNR 6 1/4A	10	FLNR6.25T	07945815059	•	•
7	FLNR007	FLNR 7A	10	FLNR007.T	07945815061	•	•
7 1/2	FLNR07.5	FLNR 7 1/2A	10	FLNR07.5T	07945815062	•	•
8	FLNR008	FLNR 8A	10	FLNR008.T	07945815063	•	•
9	FLNR009	FLNR 9A	10	FLNR009.T	07945815064	•	•
10	FLNR010	FLNR 10A	10	FLNR010.T	07945815065	•	•
12	FLNR012	FLNR 12A	10	FLNR012.T	07945815066	•	•

Class RK5 Fuses

FLNR Series

Ordering Information

AMPERE	CATALOG NUMBER	PRODUCT MARKING	PACK QUANTITY	ORDERING NUMBER	UPC	AGENCY APPROVALS	
						UL	CSA
15	FLNR015	FLNR 15A	10	FLNR015.T	07945815068	•	•
17½	FLNR17.5	FLNR 17½A	10	FLNR17.5T	07945815069	•	•
20	FLNR020	FLNR 20A	10	FLNR020.T	07945815071	•	•
25	FLNR025	FLNR 25A	10	FLNR025.T	07945815072	•	•
30	FLNR030	FLNR 30A	10	FLNR030.T	07945815073	•	•
35	FLNR035	FLNR 35A	10	FLNR035.T	07945815074	•	•
40	FLNR040	FLNR 40A	10	FLNR040.T	07945815075	•	•
45	FLNR045	FLNR 45A	10	FLNR045.T	07945815076	•	•
50	FLNR050	FLNR 50A	10	FLNR050.T	07945815077	•	•
60	FLNR060	FLNR 60A	10	FLNR060.T	07945815078	•	•
70	FLNR070	FLNR 70A	5	FLNR070.V	07945815079	•	•
75	FLNR075	FLNR 75A	5	FLNR075.V	07945805561	•	•
80	FLNR080	FLNR 80A	5	FLNR080.V	07945815080	•	•
90	FLNR090	FLNR 90A	5	FLNR090.V	07945815081	•	•
100	FLNR100	FLNR 100A	5	FLNR100.V	07945815082	•	•
110	FLNR110	FLNR 110A	1	FLNR110.X	07945815083	•	•
125	FLNR125	FLNR 125A	1	FLNR125.X	07945815084	•	•
150	FLNR150	FLNR 150A	1	FLNR150.X	07945815086	•	•
175	FLNR175	FLNR 175A	1	FLNR175.X	07945815087	•	•
200	FLNR200	FLNR 200A	1	FLNR200.X	07945815088	•	•
225	FLNR225	FLNR 225A	1	FLNR225.X	07945815089	•	•
250	FLNR250	FLNR 250A	1	FLNR250.X	07945815090	•	•
300	FLNR300	FLNR 300A	1	FLNR300.X	07945815091	•	•
350	FLNR350	FLNR 350A	1	FLNR350.X	07945815092	•	•
400	FLNR400	FLNR 400A	1	FLNR400.X	07945815093	•	•
450	FLNR450	FLNR 450A	1	FLNR450.X	07945815095	•	•
500	FLNR500	FLNR 500A	1	FLNR500.X	07945815096	•	•
600	FLNR600	FLNR 600A	1	FLNR600.X	07945815098	•	•

Class RK5 Fuses

FLNR Series

Dimensions

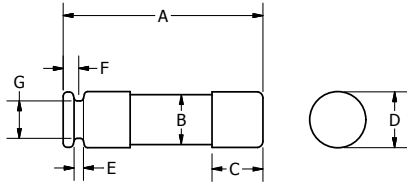


FIG. 1

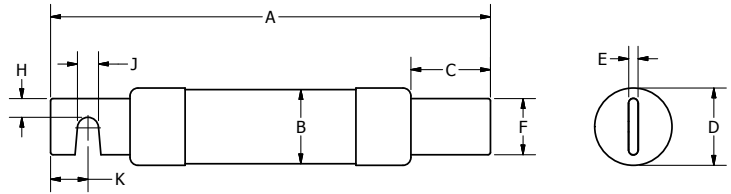


FIG. 2

AMPS	FIGURE NUMBER	DIMENSIONS INCHES (MM)									
		A	B	C	D	E	F	G	H	J	K
1/10-30	1	2.00 (50.8)	0.50 (12.7)	0.50 (12.7)	0.56 (14.3)	0.07 (1.8)	0.16 (4.0)	0.38 (9.5)	-	-	-
35-60	1	3.00 (76.2)	0.76 (19.2)	0.63 (15.9)	0.81 (20.7)	0.09 (2.4)	0.19 (4.7)	0.63 (15.9)	-	-	-
70-100	2	5.88 (149.2)	1 (25.1)	1.06 (27.0)	1.03 (26.2)	0.13 (3.2)	0.75 (19.1)	-	0.25 (6.4)	0.28 (7.1)	0.50 (12.7)
110-200	2	7.13 (181)	1.50 (37.9)	1.47 (37.3)	1.54 (39.0)	0.19 (4.8)	1.13 (28.6)	-	0.44 (11.1)	0.28 (7.1)	0.69 (17.5)
225-400	2	8.63 (219.1)	2 (50.4)	1.94 (49.2)	2.00 (50.8)	0.25 (6.4)	1.63 (41.3)	-	0.63 (15.9)	0.41 (10.3)	0.94 (23.8)
450-600	2	10.38 (263.5)	2.50 (63.1)	2.38 (60.3)	2.54 (64.6)	0.25 (6.4)	2 (50.8)	-	0.75 (19.1)	0.53 (13.5)	1.13 (28.6)

Current-Limiting Effects of FLNR Fuses

SHORT CIRCUIT CURRENT*	APPARENT RMS SYMMETRICAL CURRENT FOR VARIOUS FUSE RATINGS					
	30 A	60 A	100 A	200 A	400 A	600 A
5,000	1,400	2,100	3,100	5,000	5,000	5,000
10,000	1,550	2,500	3,900	6,500	9,500	10,000
15,000	2,000	3,150	4,400	7,250	10,500	14,000
20,000	2,250	3,400	5,000	8,250	12,000	16,000
25,000	2,400	3,750	5,250	9,000	12,500	16,500
30,000	2,550	4,100	5,600	9,500	13,500	18,000
35,000	2,650	4,300	5,800	9,750	14,000	19,000
40,000	2,800	4,400	6,250	10,250	15,000	20,000
50,000	3,000	5,000	6,500	10,500	16,000	21,000
60,000	3,200	5,250	7,000	11,500	17,000	23,000
80,000	3,400	5,750	7,500	12,500	19,000	25,500
100,000	3,850	6,000	8,000	13,500	21,000	27,500
150,000	4,100	7,000	9,000	15,200	24,000	31,500
200,000	4,300	7,500	9,750	16,500	26,000	34,000

*Prospective RMS Symmetrical Amperes Short-Circuit Current
 Note: Data Derived from Peak Let-Thru Curves

Disclaimer Notice – Information furnished is believed to be accurate and reliable. However, users should independently evaluate the suitability of and test each product selected for their own applications. Littelfuse products are not designed for, and may not be used in, all applications. Read complete Disclaimer Notice at www.littelfuse.com/product-disclaimer.