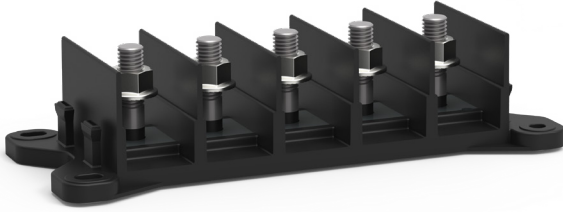
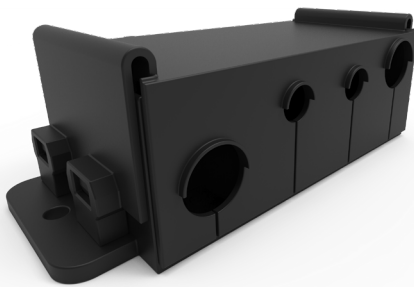


ZCASE® 4P-5P SERIES

400 A Bolt-Down Fuse Holders



FHZ415



FHZ416

Description

ZCASE® 4P-5P Series 400 A Bolt-Down Fuse Holders are four-position and five-position automotive fuse blocks that enable circuit-protected power distribution with ZCASE® fuses (sold separately). These DC power distribution blocks have thermoplastic bases and protective covers with UL 94 V-0 flammability ratings and have been tested to ISO 16750-3 standards for shock and vibration.

Web Resources

Download 2D print, installation guide and technical resources at: littelfuse.com/4p-5pseries

Ordering Information

| PART NUMBER | DESCRIPTION | CONTINUOUS CURRENT RATING | FUSE TYPE | MOUNTING METHOD | MAX VOLTAGE RATING |
|-------------|---|---------------------------|-----------|---------------------|--------------------|
| FHZ416 | 32 V 400 A Four-Position Bolt-Down Fuse Holder Base and Cover | 400 A | ZCASE | M8 Stud Mount Hole | 32 V |
| FHZ415 | 80 V 400 A Five-Position Bolt-Down Fuse Holder Base | 400 A | ZCASE | M10 Stud Mount Hole | 80 V |
| FHZ515 | Five-Position Fuse Holder Cover | - | - | - | - |

Specifications

| | |
|-------------------------------------|--------------------------------------|
| Max Voltage Rating: | 32 V, 80 V |
| Agency Approval - Shock: | ISO16750-3 4.3 |
| Agency Approval - Vibration: | ISO16750-3 4.1.2.7 |
| Current Rating Continuous: | 400 A |
| Flammability Rating: | UL 94 V-0 |
| Fuse Type: | ZCASE® |
| Input Terminals: | M8 Stud Mount Hole |
| Output Terminals: | M8 Stud, M10 Stud |
| Recommended Torque: | M8 Nut: 10-14 N-m, M 10 Nut: 6-8 N-m |
| Operating Temperature (C): | -40°C to 85°C |

Applications

- Heavy Trucks
- Medium-Duty Trucks
- Construction Equipment
- Agricultural Vehicles

Features and Benefits

- Four-position fuse holders accept ZCASE® M8 fuses and are rated for up to 32 V
- Five-position fuse holders accept ZCASE® M10 fuses and are rated for up to 80 V
- Thermoplastic base and cover have a UL 94 V-0 flammability rating
- Tested to ISO 16750-3 4.3 and ISO 16750-3 4.1.2.7 standards for shock and vibration to withstand harsh conditions that are common for commercial vehicles