

# Protection Relays

## ELCT SERIES

### Current Transformer



### Description

The ELCT series is a sensitive current transformer with integrated flux conditioner used with Littelfuse relays to detect low levels of earth-leakage current.

### Accessories



**CBLTP**  
Twisted-pair wire for connection to CT.  
Order in desired length in meters.

### Ordering Information

| ORDERING NUMBER | TURNS RATIO | WINDOW SIZE, ID | WEIGHT             |
|-----------------|-------------|-----------------|--------------------|
| ELCT5-31        | 100:1       | 31mm (1.22 in)  | 127.0 g (0.28 lbs) |
| ELCT5-88        | 100:1       | 88mm (3.46 in)  | 635.0 g (1.40 lbs) |
| ELCT30-31       | 600:1       | 31mm (1.22 in)  | 131.5 g (0.29 lbs) |
| ELCT30-88       | 600:1       | 88mm (3.46 in)  | 680.4 g (1.50 lbs) |

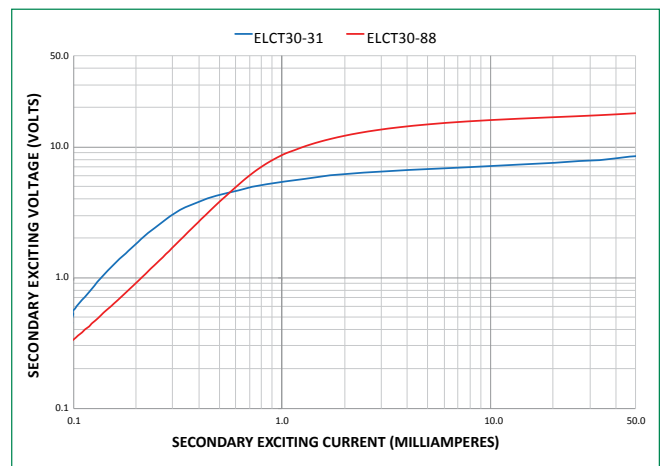
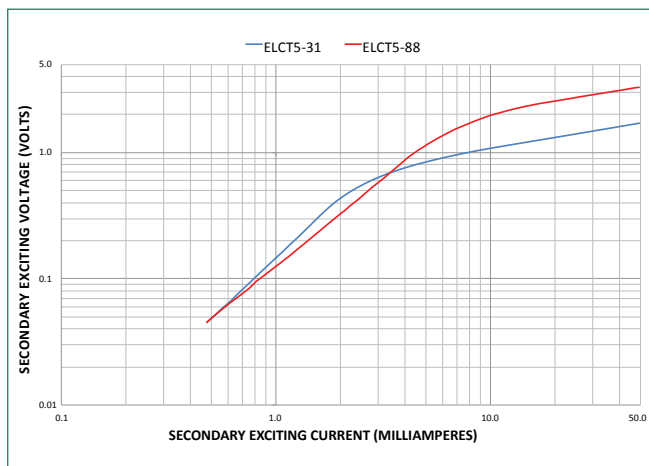
### Specifications

|                              |   |
|------------------------------|---|
| <b>Current Rating</b>        | <b>ELCT5:</b> 5:0.05 A<br><b>ELCT30:</b> 30:0.05 A        |
| <b>Accuracy</b>              | <b>ELCT5:</b> 3% @ 0.01 VA<br><b>ELCT30:</b> 3% @ 0.06 VA |
| <b>Frequency</b>             | 50 to 400 Hz  |
| <b>Insulation Level</b>      | 600 V   |
| <b>Operating Temperature</b> | -40 to 55 °C (-40 to 131 °F)                              |
| <b>Application</b>           | SE-701  |
| <b>Wire Gauge</b>            | 0.05–3.3mm <sup>2</sup> (12–30 AWG)                       |
| <b>Tightening Torque</b>     | 0.5 N-m   |
| <b>Certification</b>         | UL, cUL, CE   |
| <b>Compliance</b>            | RoHS, IEC 61869-2, ANSI/IEEE C57.13                       |

Note: One frequency response may be extended for specific product families

### Recommended Relay

Series: SE-330  
SE-704 (ELCT30-series)



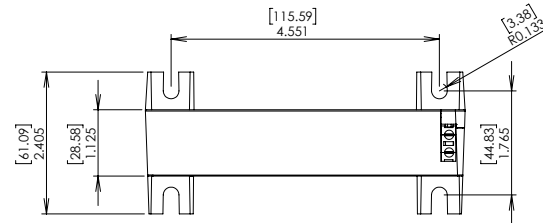
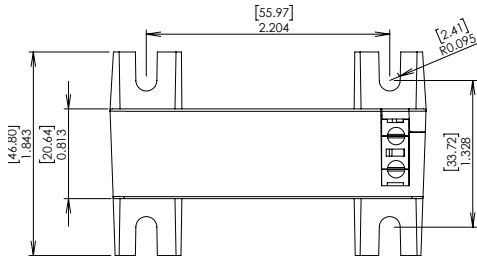
# Protection Relays

## ELCT SERIES

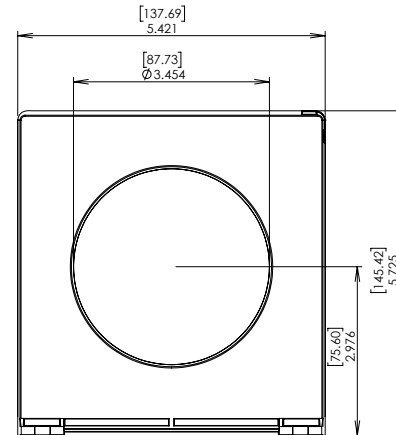
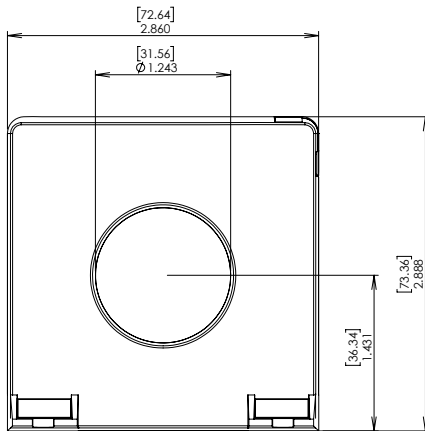
### Dimensions and Mounting Diagram

Inches [millimeters]

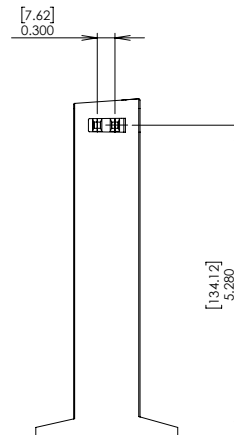
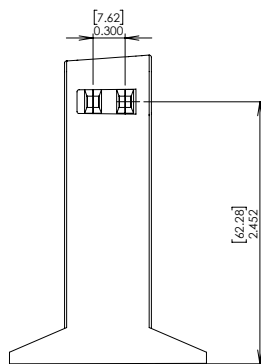
Mount the ELCT5-31 and ELCT30-31 using M5 or #10 screws.  
 Mount the ELCT5-88 and ELCT30-88 using M6 or 1/4" screws.



### TOP VIEW AND MOUNTING DETAIL



### FRONT VIEW



ELCT5-31 and ELCT30-31

SIDE VIEW

ELCT5-88 and ELCT30-88

**Disclaimer Notice** – Information furnished is believed to be accurate and reliable. However, users should independently evaluate the suitability of and test each product selected for their own applications. Littelfuse products are not designed for, and may not be used in, all applications. Read complete Disclaimer Notice at [www.littelfuse.com/product-disclaimer](http://www.littelfuse.com/product-disclaimer).