

ZSCT SERIES

Current Transformer



Description

The ZSCT series is a current transformer used with Littelfuse relays to detect low levels of earth-leakage current.

Accessories



CBLTP

Twisted-pair wire for connection to CT.
Order in desired length in meters.

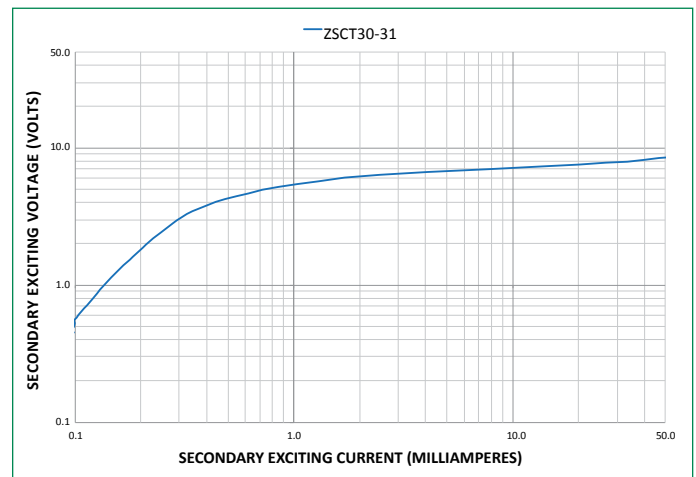
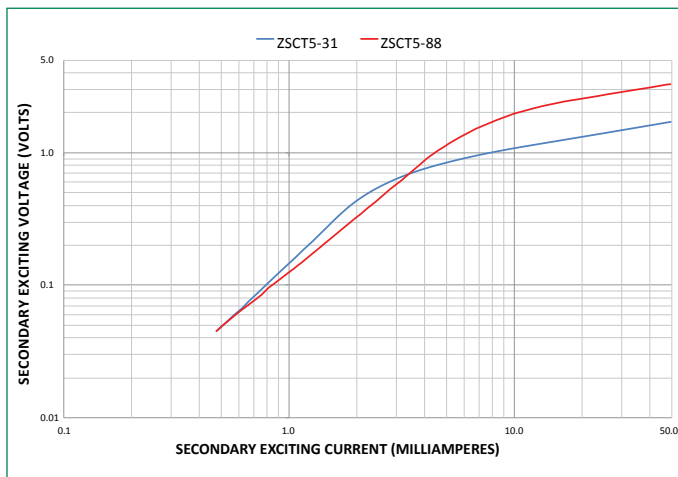
Specifications

Current Rating	ZSCT5: 5:0.05 A ZSCT30: 30:0.05A
Accuracy	ZSCT5: 3% @ 0.01 VA ZSCT30: 3% @ 0.06 VA
Frequency	50 to 400 Hz
Insulation Level	600V
Operating Temperature	-40 to 55° C (-40 to 131° F)
Application	MP8000
Wire Gauge	0.05-3.3mm ² (12-30 AWG)
Tightening Torque	0.5 N-m
Certification	UL, cUL, CE
Compliance	RoHS, IEC 61869-2, ANSI/IEEE C57.13

Ordering Information

ORDERING NUMBER	TURNS RATIO	WINDOW SIZE, ID	WEIGHT
ZSCT5-31	100:1	31mm (1.22 in)	117.9 g (0.26 lbs)
ZSCT5-88	100:1	88mm (3.46 in)	499.0 g (1.10 lbs)
ZSCT30-31	600:1	31mm (1.22 in)	113.4 g (0.25 lbs)

Note: One frequency response may be extended for specific product families

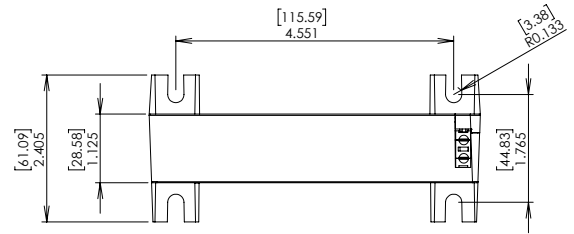
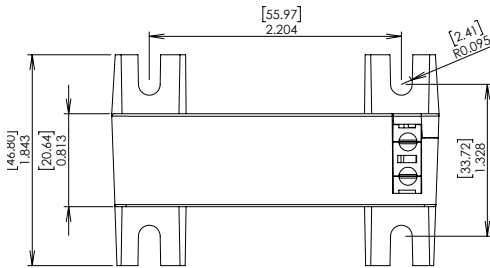


ZSCT SERIES

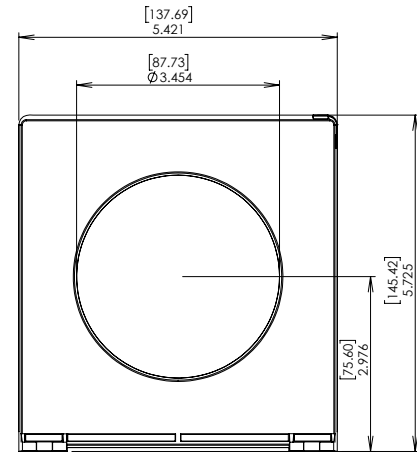
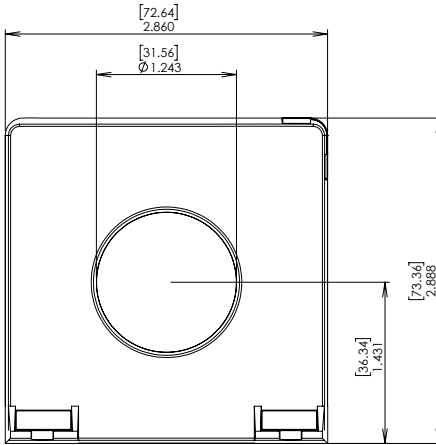
Dimensions and Mounting Diagram Inches [millimeters]

Mount the ZSCT5-31 and ZSCT30-31 using M5 or #10 screws.

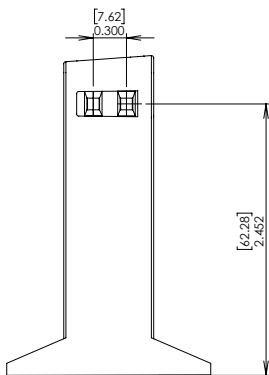
Mount the ZSCT5-88 using M6 or 1/4" screws.



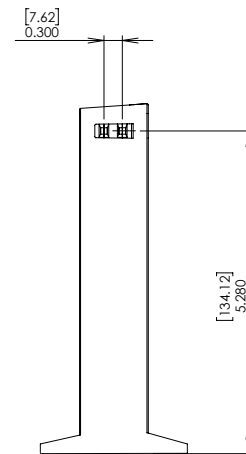
TOP VIEW AND MOUNTING DETAIL



FRONT VIEW



ZSCT5-31 and ZSCT30-31



ZSCT5-88

SIDE VIEW

Disclaimer Notice – Information furnished is believed to be accurate and reliable. However, users should independently evaluate the suitability of and test each product selected for their own applications. Littelfuse products are not designed for, and may not be used in, all applications. Read complete Disclaimer Notice at www.littelfuse.com/product-disclaimer.