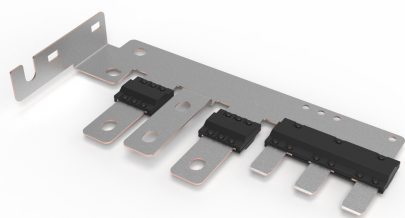
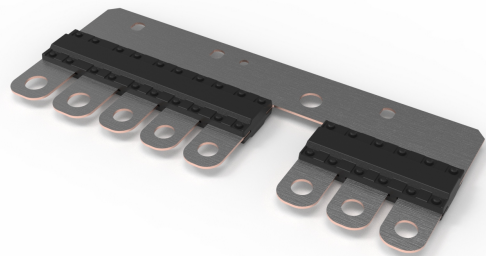


# MASTERFUSE

Rated 32V



## Specifications

|   |   |
|---|---|
| <b>Voltage Rating:</b>                        | 32 VDC  |
| <b>Interrupting Rating:</b>                   | 2000A @ 32 VDC  |
| <b>Recommended Environmental Temperature:</b> | -40°C to +125°C   |
| <b>Terminals Material:</b>                    | Tin- or Silver- plated copper alloy   |
| <b>Housing Material:</b>                      | PPA-GF33HS (U.L. 94 Flammability rating - HB)   |
| <b>Complies with:</b>                         | ISO 8820-5<br>Note: Short-circuit protection fuses have limited continuous current capability |

## Applications

- Cars
- Trucks
- SUVs
- Offroad vehicles
- Buses
- Watercraft as approved by Littelfuse®

## Description

The MASTERFUSE product is a configurable fuse solution combining several different fuse types (i.e. MEGA and MIDI) and ratings in one compact package. This fuse package allows the user to replace multiple discrete fuses in a power distribution box with a single component, thus eliminating additional bolts, bus bars, and interconnects that are currently used. By reducing the number of connections required, overall system reliability is increased while cost is decreased.

Each MASTERFUSE is customized to the user's application creating an optimized circuit protection package.

**Contact Littelfuse to review your application needs.**

## Features & Benefits

- Increased Reliability: due to reduced number of terminal interfaces
- System Cost Saving: Material savings due to reduced number of components required. Assembly cost savings due to reduced number of operations required for installation.
- Fuse Array Customization: Ability to mix different fuse types (i.e. MEGA, MIDI, etc..)
- Termination Options: Ability to mate to female terminals to enable "bolt-less" design
- Marking: Custom marking options available