

MIDI[®], Clear MIDI[®], One-Hole MIDI[®] Style

Bolt-down Fuse Rated 32V

Ratings

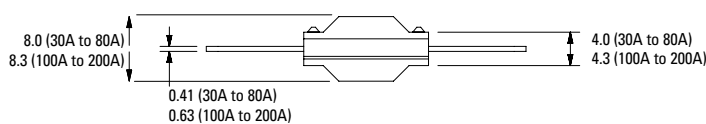
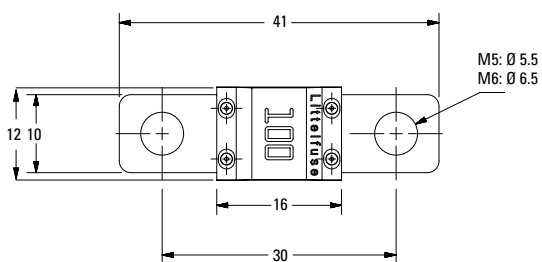
Part Number	Current Rating (A)	Color Code	Test Cable size (mm ²)	Typ. Voltage Drop (mV)	Typ. Cold Resistance (mΩ)	Typ. I ² t (A ² s)
0498030._ ²	30		2.5	65	2.06	4,200
0498040._	40		4	65	1.40	10,000
0498050._	50		6	65	1.02	13,000
0498060._	60		6	68	0.87	21,700
0498070._	70		10	70	0.72	24,000
0498080._	80		10	58	0.54	24,600
0498100._	100		16	60	0.46	51,300
0498125._ ²	125		25	71	0.39	73,200
0498150._ ^{1,2}	150		25	49 ⁴	0.32	81,900
0498175._ ^{1,2,3}	175		25	53 ⁴	0.26	100,000
0498200._ ^{1,2}	200		25	51 ⁴	0.26	125,000

Note 1: Short Circuit Protector only, Note 2: Not UL Recognized, Note 3: Color Coding deviating from ISO standard, Note 4: Measured at 75% I_r
 The typical I²t is an average value calculated from the breaking capacity tests by using the melting time before the arcing occurs.

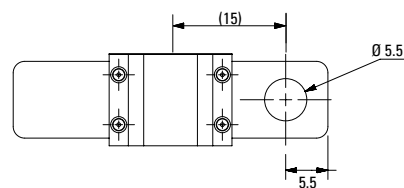
Dimensions

Dimensions in mm for reference only.
 See outline drawing for dimensions and tolerances.

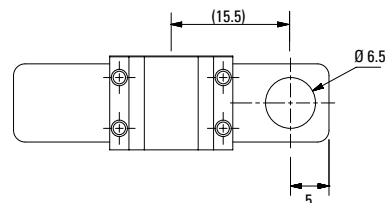
MIDI 2 Holes M5/M6 versions



MIDI 1 Hole M5 versions



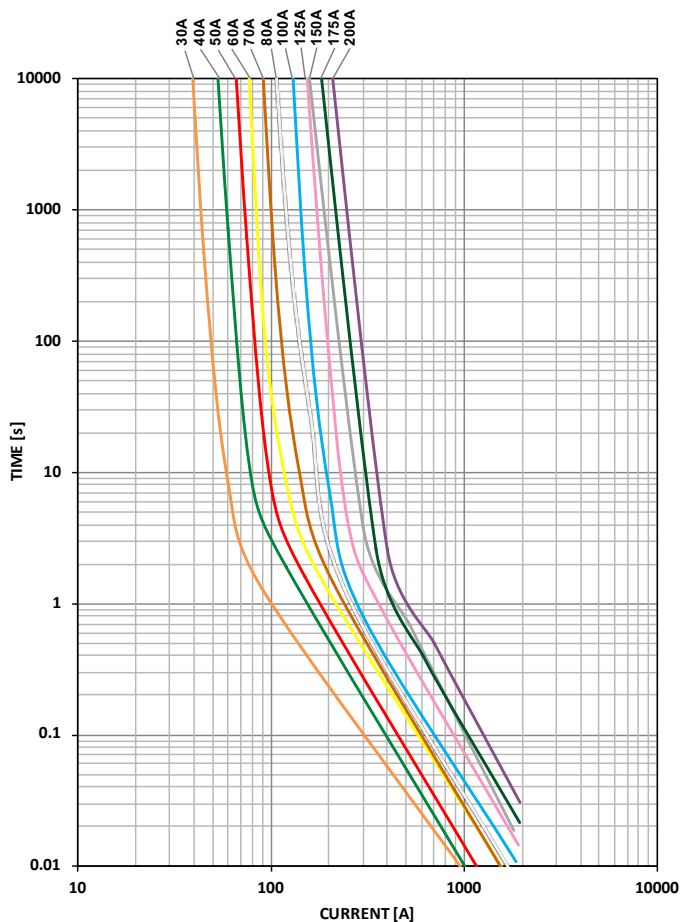
MIDI 1 Hole M6 versions



MIDI[®], Clear MIDI[®], One-Hole MIDI[®] Style

Bolt-down Fuse Rated 32V

Time-Current Characteristic Curves



Time-Current Characteristics

% of Rating	Opening Time Min / Max (s)	
	30A-125A	150A-200A
75	- / -	360,000 / ∞
100	360,000 / ∞	- / -
110	14,400 / ∞	- / -
150	90 / 3,600	- / -
200	3 / 100	1 / 15
300	0.3 / 3	- / -
350	- / -	0.3 / 5
500	0.1 / 1	- / -
600	- / -	0.1 / 1

MIDI[®], Clear MIDI[®], One-Hole MIDI[®] Style Bolt-down Fuse Rated 32V

Typical Derating of Fuse Melting Element

Temperature Security Margin is 20%

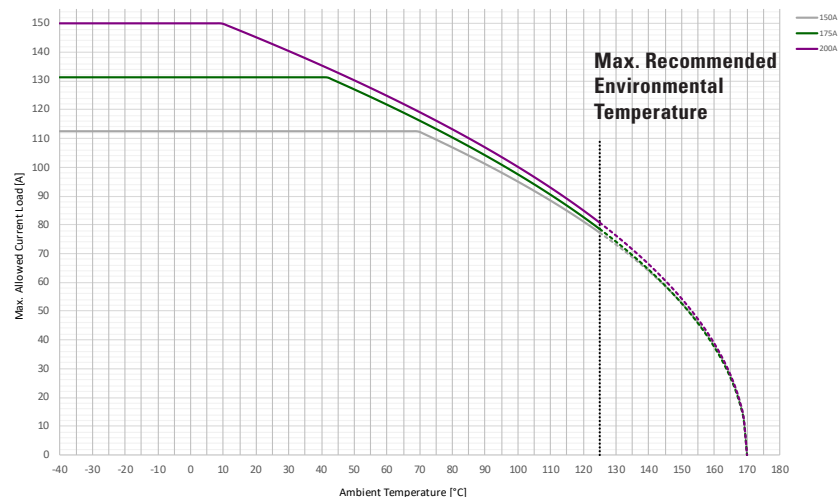
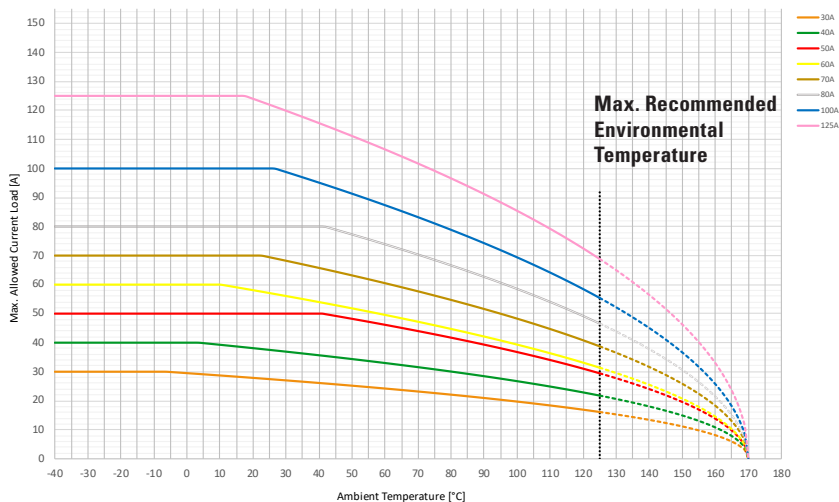
Wire Cross Section And Fixture Test Set Up Refer To ISO 8820-3

Please Contact Littelfuse[®] For Details Regarding Derating Test Set Up

Temperature Table

	max. allowed current load [A] at ambient temperature (typical derating)						
	-20°C	0°C	20°C	65°C	85°C	110°C	125°C
30A	30	30	28	24	22	18	16
40A	40	40	38	32	29	25	22
50A	50	50	50	45	41	34	29
60A	60	60	58	48	43	36	31
70A	70	70	70	59	53	45	39
80A	80	80	80	72	65	54	47
100A	100	100	100	85	77	64	55
125A	125	125	124	104	94	79	69
150A	113	113	113	113	104	88	77
175A	131	131	131	119	107	90	79
200A	150	150	145	122	110	93	81

Derating curves may change depending on the final condition of the application (terminals characteristics, wire size etc.). Please ask Littelfuse for more information.



Derating curves may change depending on the final condition of the application (terminals characteristics, wire size etc.). Please ask Littelfuse[®] for more information.